
Annex A

Site Photographs

4 Pages



Plate 1: C19 Filling Area



Plate 2: C32



Plate 3: C32 Burning Ground



Plate 4: C33 Fuel Storage Area



Plate 5: C33 Fuel Storage Area No. 2



Plate 6: C60 POL Point



Plate 7: C60 POL Store



Plate 8: Hardstanding Adjacent to A33 Burning Ground



Plate 9: C33 Disturbed Ground Area



Plate 10: C33 External POL Chemical Storage Area



Plate 11: C32 Burning Area with Disturbed Ground to the Rear



Plate 12: C32 Radioactive Items Store



Plate 13: C32 Storage Racks of Outdoor Pursuit Items



Plate 14: C6A Storage Warehouse



Plate 15: C6N Tentage Equipment Stores



Plate 16: Hardstanding Adjacent to A33 Burning Ground



Plate 17: Warehouse A1 and Mechanical Handling Equipment Training Annex



Plate 18: Hardstanding area located to the West of A1



Plate 19: Distribution Substation DSS AR located adjacent to A1



Plate 20: Clinker and Slag Material noted in the Railway Line Embankment



Plate 21: A4 Viewed along Southern Side



Plate 22: A31 Romney Shed Containing Empty Storage Boxes

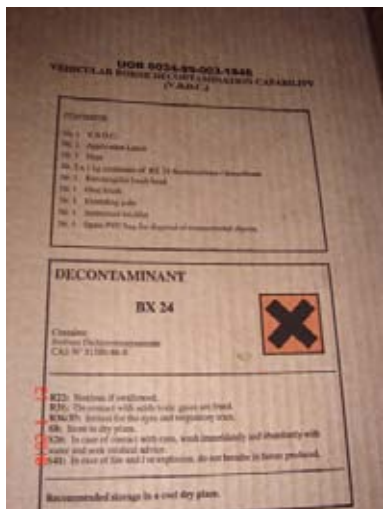
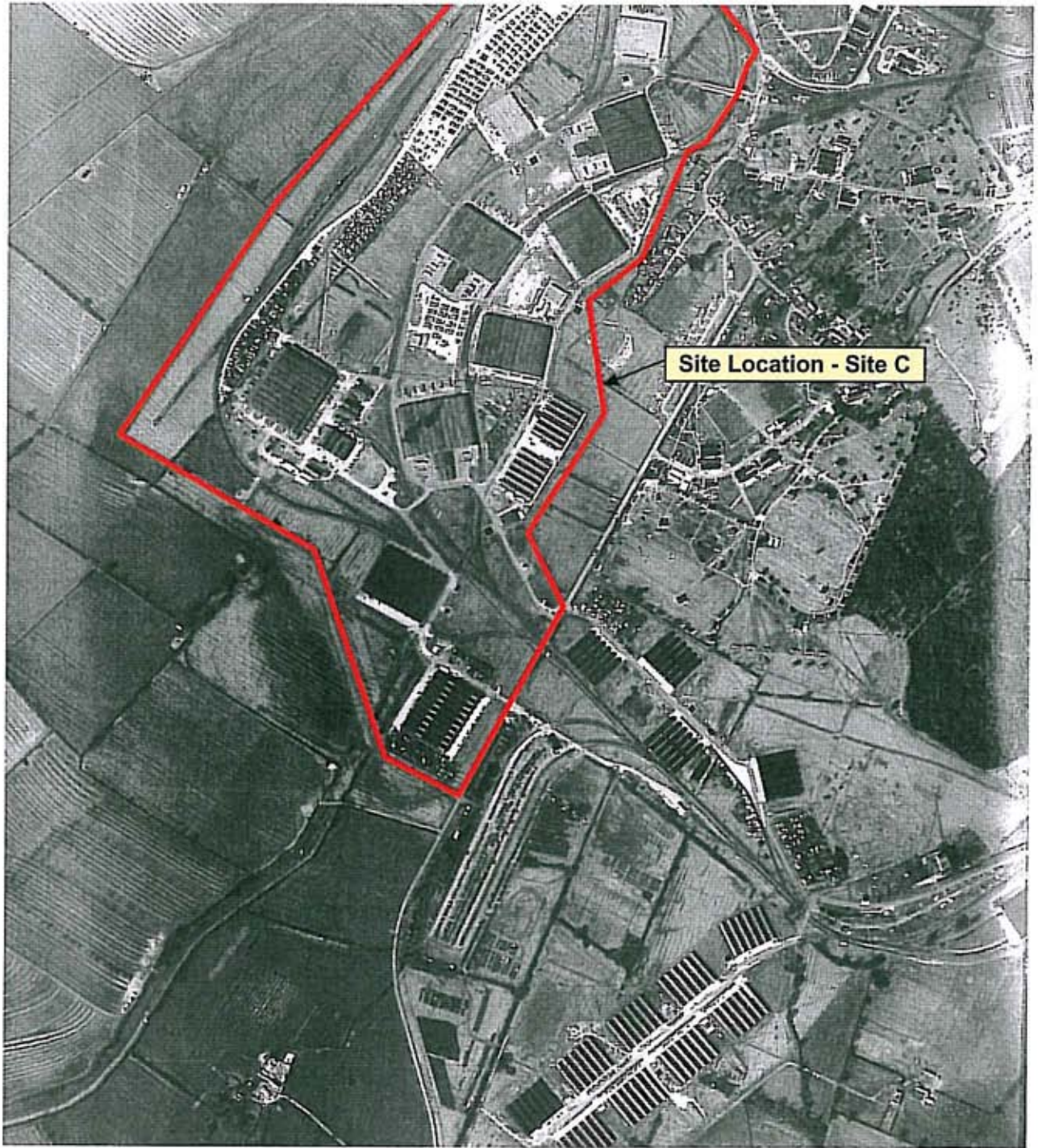


Plate 23: A31 Romney Shed held some Stocks of Decontamination Powder

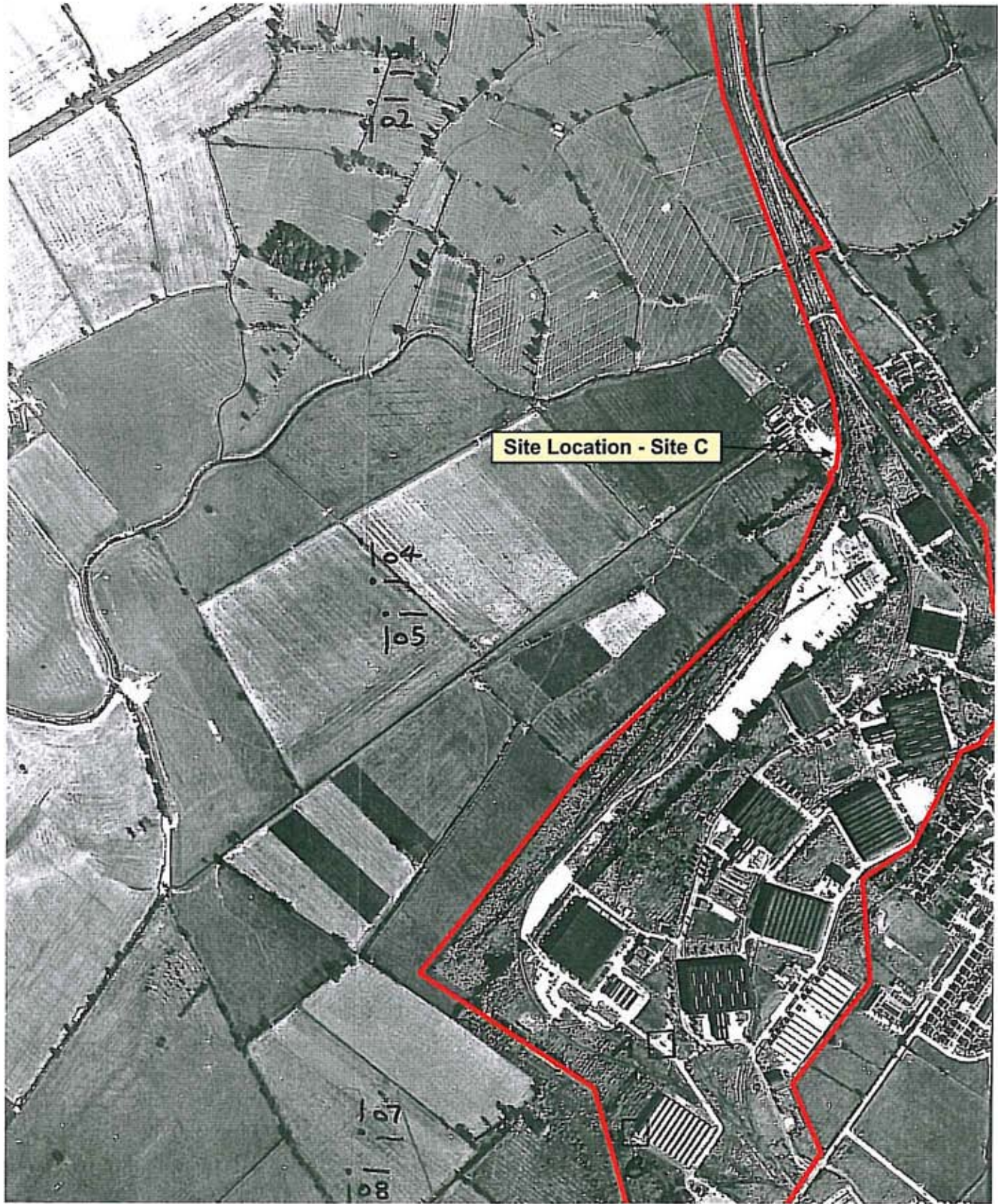
Annex B

Historical Aerial Photographs

2 Pages



1947



1975