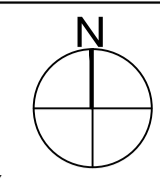
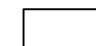





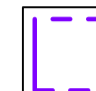
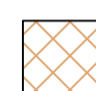
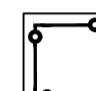


REFER TO DRAWING No. WIB13983-107-AA-74-502



LEGEND

-  MY GRAND DESIGNS LANDSCAPE WORKS BOUNDARY
-  EXISTING TREES TO BE RETAINED
-  EXISTING VEGETATION TO BE RETAINED
-  EXISTING TREES TO BE REMOVED
Refer to Amenity Tree Care Ltd Drawing No. TR01 - TR01 - Hilltop for details.
-  EXISTING VEGETATION TO BE REMOVED
-  ROOT PROTECTION AREAS (RPA)
-  PROTECTION FENCING
Refer to detail on Drawing No: WIB13983-107-AA-74-502.
-  CONSTRUCTION WORKING AREA
Refer to Landscape Specification for details.
-  EXISTING STOCK-PROOF FENCING TO NETWORK RAIL ECOLOGY PONDS TO BE RETAINED

Note:
Refer to Amenity Tree Care Ltd Drawing No. TR01 & TR01 - Hilltop for details.

All works to be carried out in accordance with the principles of BS5837:2012 when in proximity to retained trees and hedgerows.

Landscape Works within construction working area and otherwise in proximity to existing retained trees:

- Ensure all temporary protective fencing is in place prior to the commencement of any Works;
- Ensure the extent of Construction Working Areas are clearly demarcated on Site at all times;
- Where possible, plant which will be tracked or operated within the RPA or canopy of an existing tree should be selected with due regard to minimising the likelihood of damage i.e. through minimising size or weight of plant;
- Storage of materials must be located outside the RPA or canopy spread of retained trees;
- Where dust generated by the Works comes into contact with tree leaves, branches or trunks, consideration should be given to controlled hosing down of the tree to prevent dust disrupting physiological processes. The washing of cementitious or other phytotoxic liquids into permeable surfaces within the RPA must be avoided;
- Existing trees to be retained must be protected from harmful chemicals, oils or other phytotoxic liquids coming into contact with leaves, branches, trunks or roots or from draining into the RPA.

PROPOSED ECOLOGY POND AREA

NETWORK RAIL ECOLOGY POND AREA

REFER TO INSET

INSET

Rev	Date	Description	By
C	12:10:15	ALLOTMENTS REVISED TO SUIT TEMPORARY ACCESS	LB
B	09:10:15	UPDATED TO PLANNING STATUS	LB
A	10:09:15	UPDATED STATUS	DD

Project
MOD Graven Hill, Bicester

Title
**MY GRAND DESIGNS
TREE AND HABITAT PROTECTION PLAN
SHEET 1 OF 2**

Client
Graven Hill Village Development Company Limited



Merchants House Wapping Road Bristol BS1 4RW
1 0117 937 8200
mail@watermangroup.com www.watermangroup.com

Drawing Status				
PLANNING				
Designed by	DD	Checked by	TA	Project No
Drawn by	DD	Date	Aug 2015	WIB13983
Scales @ A1	work to figured dimensions only		1:500 @A1	Work Order No
				107
Publisher	Zone	Category	Number	Revision
WIB	AA	74	501	C

