

OXFORDSHIRE COUNTY COUNCIL STREET LIGHTING SPECIFICATIONS

Column 5m tubular steel column (BS EN 40) B09407 (Style 4 drg HSD/13015) suitable for entry mounted lantern. Rationalised wind loading factor for Oxfordshire as specified in 23 No. PD0547/2009 for design of lighting columns

Lantern Holograph Factor LED Lantern Ref: FTRU034NRAL6013T5Z - Green RAL 6013
 Lamp LED c 3000lm with 4000K colour temperature
 Control One piece mini photocell (Zadion) set at 55 Lux on 28 lux off

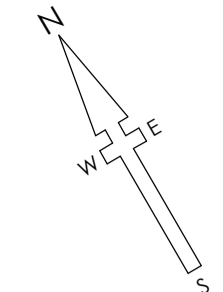
Column finish **EPA Compliant Epoxy / Polysiloxane Amended Oxfordshire County Council Specification.**

- 1st Coat: Internal root to 250mm above ground level & External overall
- 2nd Coat: External root to 250mm above ground level
- 3rd Coat: External overall

- 1) Columns to be sited at the rear of footpath and within adoptable area.
- 2) Positions are approximate. The Local Authority Engineer reserves the right to alter positions depending on site conditions.
- 3) All equipment shall comply with the Oxfordshire County Council General Technical Specification.
- 4) The Contractor shall obtain samples of the paint and technical Data Sheets from the Manufacturers prior to commencement of work.
- 5) In order to assist the developer, the design Engineer will mark out all of the column positions.
- 6) All Street Lighting works must be carried out by Highway Electrical Association Registered Contractor.
- 7) All columns to be numbered two metres from ground level.
- 8) Electrical Supply to Street Lighting Columns and Illuminated Signs are to be serviced/owned by the local Distribution Network Operator (i.e. Regional Electricity Company).
- 9) The 'A' file reference number which is on the drawing, is to be quoted in all correspondence.
- 10) No trees are to be planted within five metres of a column.

NB: Touch up on site using 2 Pack paints applied by brush will never offer the same appearance as that of a spray applied finish. For this reason every effort should be made to minimize handling / transportation damage.

Street Lighting to be adopted by OXFORDSHIRE COUNTY COUNCIL



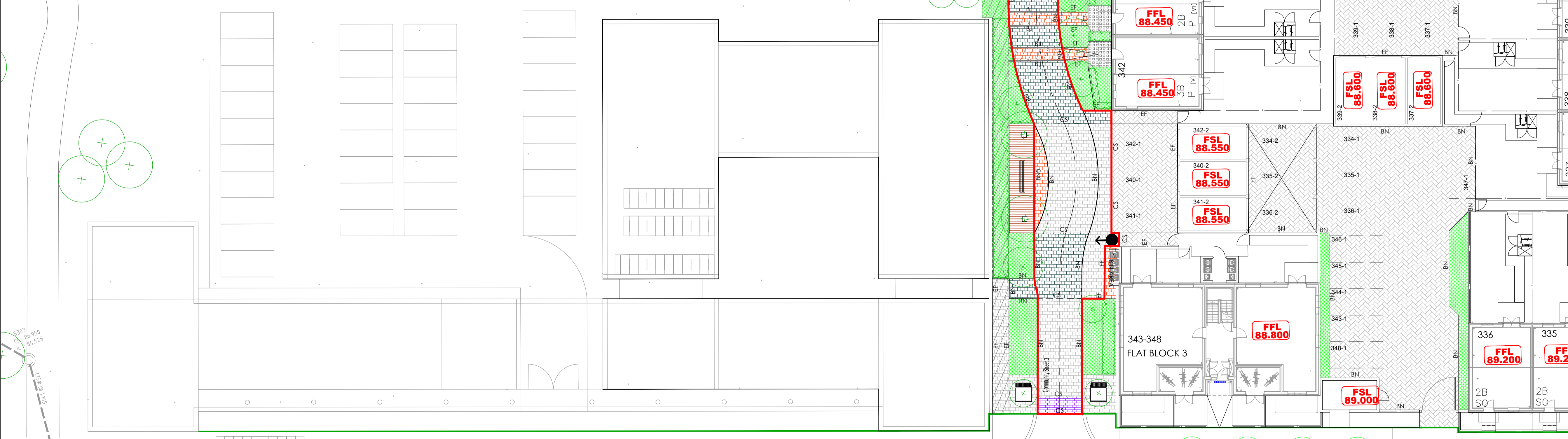
KERBING KEY	
HB2	125x255 HB2 kerb (125mm face)
BN	125x150 BN15 dropped (15mm face)
DK 0	125x150 BN15 dropped (0mm face)
EF	50x150 EF edging laid flush
T	Dropper/Transition kerb as required
CS	square edged channel block
BJ	Blocks Butt jointed together
mb	Highway marker block
TB	Timber Bollard (OCC Approved)
GS	Circle of Granite Setts
SC	Stretcher Course
Permeable Charcon Andover Stratford Infiltra	
Colour - Silver Grey (refer to drg 11-1196-20 - Detail B)	
Permeable Charcon Woburn Rumble Infiltra	
Colour - Rustic (refer to drg 11-1196-20 - Detail B)	
Permeable Charcon Andover Stratford Infiltra	
Colour - Charcoal (refer to drg 11-1196-20 - Detail B)	
Permeable Charcon Infiltra	
Colour - Grey (refer to drg 11-1196-21 - Detail A)	
Permeable Charcon Infiltra	
Colour - Burnt Oker (refer to drg 11-1196-21 - Detail A)	
Impermeable Charcon Woburn Rumble	
Colour - Graphite (refer to drg 11-1196-21 - Detail B)	
Impermeable Natratex surfacing (with contrasting inset colour where noted on plans) (refer to drg 11-1196-20 - Detail A)	
Soft landscaping (refer to Hyder drawings)	
Ecodeck (refer to detail on drg 11-1196-20)	
Granite Setts (refer to detail on drg 11-1196-20)	
Impermeable Blocks to be used within designated areas	
Proposed Service Margin	
Resin bond gravel	
Brass stud or equivalent to denote the edge of the service margin	
Proposed Limit of O.C.C. Section 38 adaption To be agreed	
Limit of Phase 1 works - Refer to Hyder drawings for details of Spine Road	
Sunset Recycled Glass 5mm Aggregate set within granite setts sunk into ground Colour A=Wild Lavender, Colour B=Pacific (refer to detail on drg 11-1196-20)	
TB	Timber Bollard with reflective strip (OCC approved)
Extent of concrete wall to service trench	
Drainage channel	

OCC Lighting Ref: A 4 2 3 6
 To be read in conjunction with drg 12-1196-07 Com 1 & Com 2

WILLMOTT DIXON HOUSING	
REVIEWED	
PRELIMINARY	A
FOR COMMENT	B
FOR CONSTRUCTION	C
SIGNED ND	
DATE 16.10.15	

Surface Finishes and Kerb Types
 Sheet 1 of 4
 Bicester Southfields Eco Village
 Bicester
 Oxon

DRAWING NUMBER
 12-1196-04 Sheet 1 of 4 Rev C06



Rev	Drawn by	Chkd by	Comments	Date	C06	ATD	TST	Kerb types updated	29/09/15
C02	NJ	TST	Bollard added as shown to prevent vehicles accessing footway	03/11/14					
C03	SNN	TST	Kerb types added to Parking areas & Driveways	27/02/15					
C04	NJ	TST	Stepping stone walkway amended following design team consultation	03/06/15					
C05	NJ	TST	Key amended, refer to clouded area	02/07/15					

NOTES

- All dimensions and levels are in metres unless otherwise noted
- This drawing is to be read in conjunction with the relevant Architect's/Engineer's drawings, specifications and CDM documentation
- This drawings has been produced electronically and may have been photo reduced or enlarged when copied. Work to figured dimensions only (DO NOT SCALE). All dimensions to be checked on site. Any errors or omissions to be reported to the engineer immediately.
- This drawing contains coloured lines / information that may not be clear if reproduced in black and white.

Note
Lighting Column Installation
 All columns must be installed within 1 metre of the design position on the lighting layout drawing, otherwise the lighting performance will be impaired.

Landscaping and Planting
 Landscaping or planting around the column must be kept at a low level to avoid obstructing the luminaire and must be suitably maintained to avoid any future obstruction that may occur from the long term growth of plants. No account is taken for the blocking effect caused by buildings, trees etc.

DATE 10/01/2013
 SCALE 1:200 @ A1
 DESIGNED BY TST
 STATUS **CONSTRUCTION**

INFRASTRUCT CS LTD
 Consulting Civil and Structural Engineers
 26A High Street, Eynsham, Oxford, OX29 4HB
 Tel: 01865 880909
 Email: info@infrastructcs.co.uk
 Web: www.infrastructcs.co.uk

WILLMOTT DIXON HOUSING