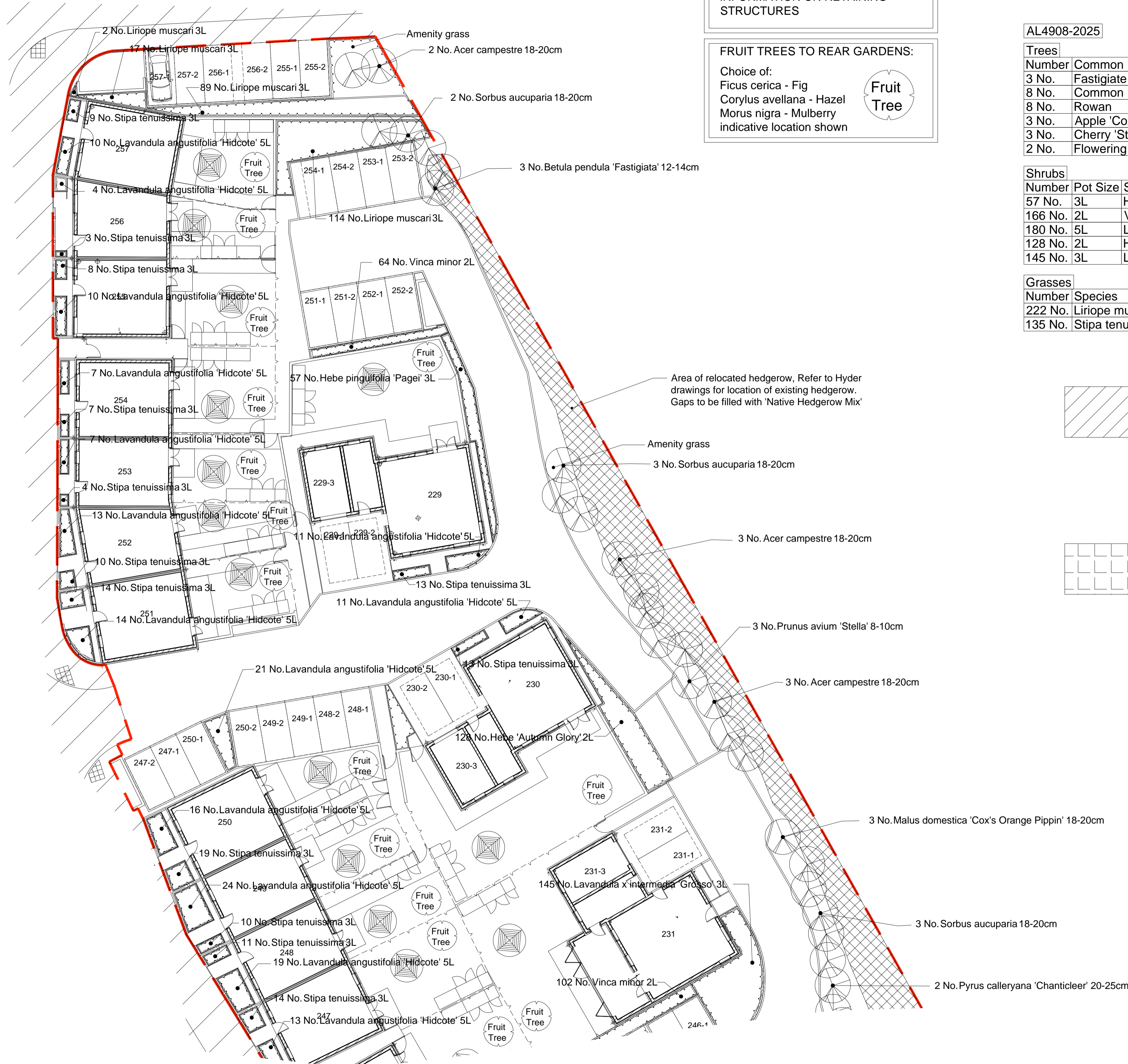
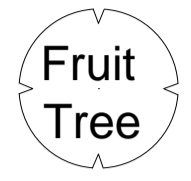


REFER TO ENGINEERS DRAWINGS FOR LEVEL INFORMATION AND INFORMATION ON RETAINING STRUCTURES

FRUIT TREES TO REAR GARDENS:
 Choice of:
 Ficus carica - Fig
 Corylus avellana - Hazel
 Morus nigra - Mulberry
 indicative location shown



AL4908-2025

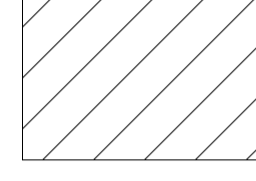
Trees	Number	Common Name	Species	Girth	Density
	3 No.	Fastigate Silver Birch	Betula pendula 'Fastigiata'	12-14cm	Counted
	8 No.	Common Maple	Acer campestre	18-20cm	Counted
	8 No.	Rowan	Sorbus aucuparia	18-20cm	Counted
	3 No.	Apple 'Cox's Orange Pippin'	Malus domestica 'Cox's Orange Pippin'	18-20cm	Counted
	3 No.	Cherry 'Stella'	Prunus avium 'Stella'	8-10cm	Counted
	2 No.	Flowering Pear 'Chanticleer'	Pyrus calleryana 'Chanticleer'	20-25cm	Counted

Shrubs

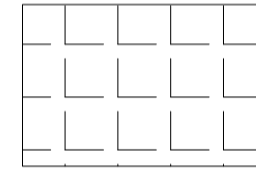
Number	Pot Size	Species	Density
57 No.	3L	Hebe pinguifolia 'Pagei'	4/m ²
166 No.	2L	Vinca minor	7/m ²
180 No.	5L	Lavandula angustifolia 'Hidcote'	3/m ²
128 No.	2L	Hebe 'Autumn Glory'	5/m ²
145 No.	3L	Lavandula x intermedia 'Grosso'	4/m ²

Grasses

Number	Species	Density
222 No.	Liriope muscari	3/m ²
135 No.	Stipa tenuissima	5/m ²



Native Hedgerow Mix		
Cornus sanguinea	Dogwood	
Corylus avellana	Hazel	
Crataegus monogyna	Hawthorn	
Ilex aquifolium	Holly	
Ligustrum vulgare	Wild Privet	
Prunus spinosa	Blackthorn	
Rosa arvensis	Field rose	
Rosa canina	Dog-rose	
Sambucus nigra	Elder	
Viburnum lantana	Wayfaring tree	
Viburnum opulus	Gelder rose	



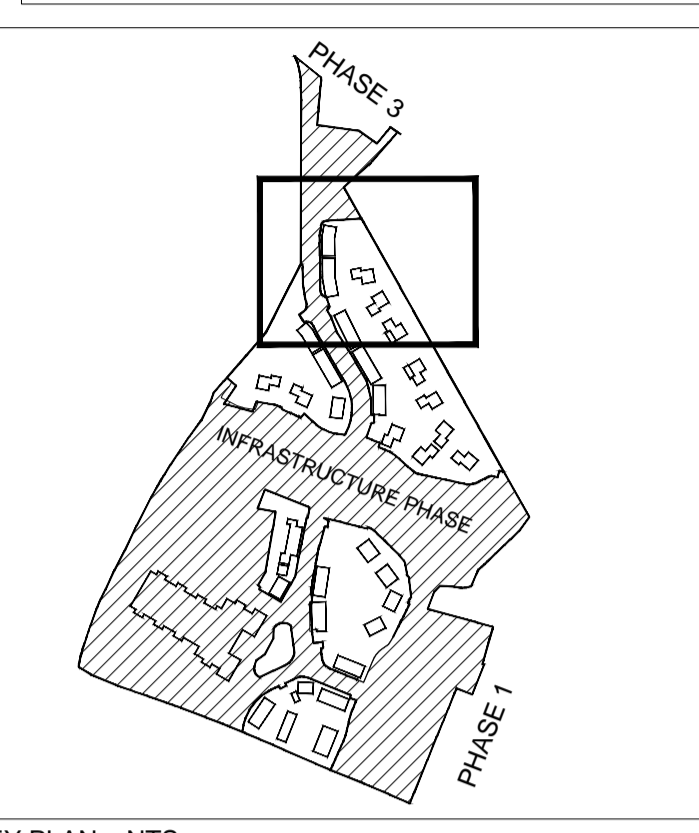
Shade Tolerant Mix		
Achillea millefolium	Yarrow	
Agrimonia eupatoria	Agrimony	
Alliaria petiolata	Garlic mustard	
Centaurea nigra	Common knapweed	
Clinopodium vulgare	Wild basil	
Galium album	Hedge bedstraw	
Geum urbanum	Wood avens	
Leucanthemum vulgare	Oxeye daisy	
Plantago lanceolata	Ribwort plantain	
Primula veris	Cowslip	
Prunella vulgaris	Selfheal	
Silene dioica	Red campion	
Silene vulgaris	Bladder campion	
Torilis japonica	Upright hedge-parsley	
Vicia cracca	Tufted vetch	

notes

- The contractor is responsible for checking dimensions, tolerances and references. Any discrepancy to be verified with the Architect before proceeding with the works.
- Where an item is covered by drawings to different scales the larger scale drawing is to be worked to.
- Do not scale drawing. Figured dimensions to be worked to in all cases.

CDM Regulations 2015

ALL current drawings and specifications for the project must be read in conjunction with the Designer's Hazard and Environmental Assessment Record.



KEY PLAN NTS

24/06/16	C	Issued for planning	MQ/AGF
11/04/16	B	Common names of trees added & updated to reflect GA changes	MQ/AGF
03/07/15	A	Drawing amended to reflect comments by Silver.	MQ/AGF

date	rev	revision/author/checker
------	-----	-------------------------

purpose of issue
PLANNING

project
Bicester Eco Town Exemplar Site, Phase 2

drawing
PLANTING PLAN 5 OF 5

drawing no	AL4908-2025	rev	C
drawn	EM	checked	MQ
scale @ A1	1:200	date	April '15

PRP Architects ©
 10 Lindsey Street
 Smithfield
 London
 EC1A 9JP
 T +44 (0)20 7653 1200
 F +44 (0)20 7653 1201
 lon.prp@prparchitects.co.uk