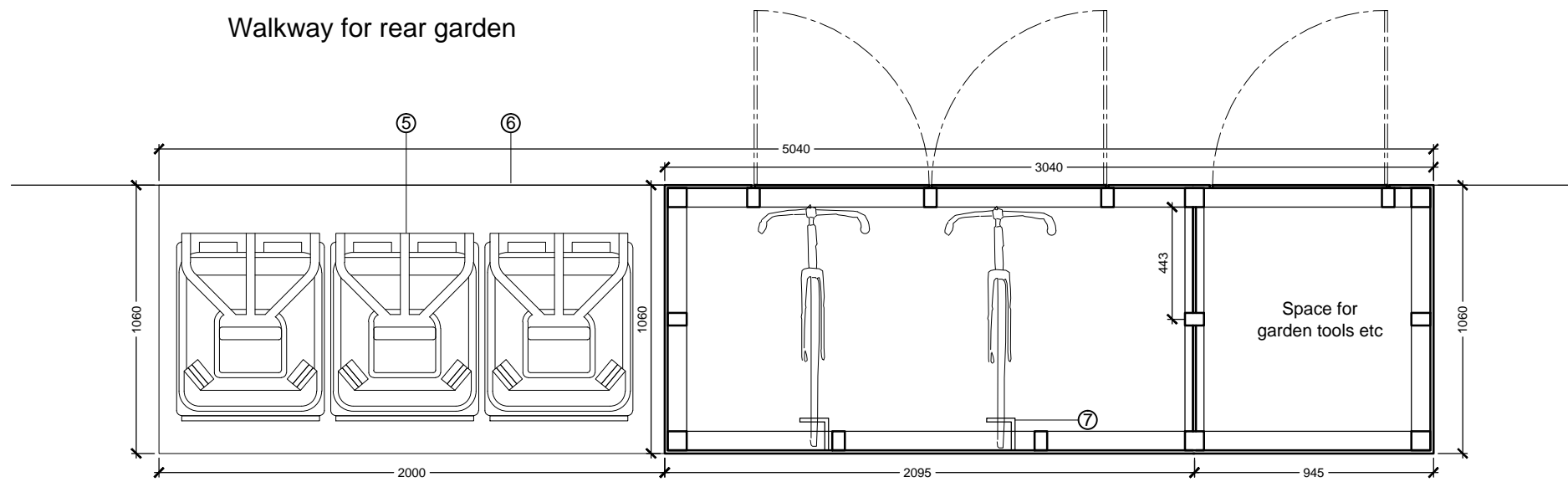


notes

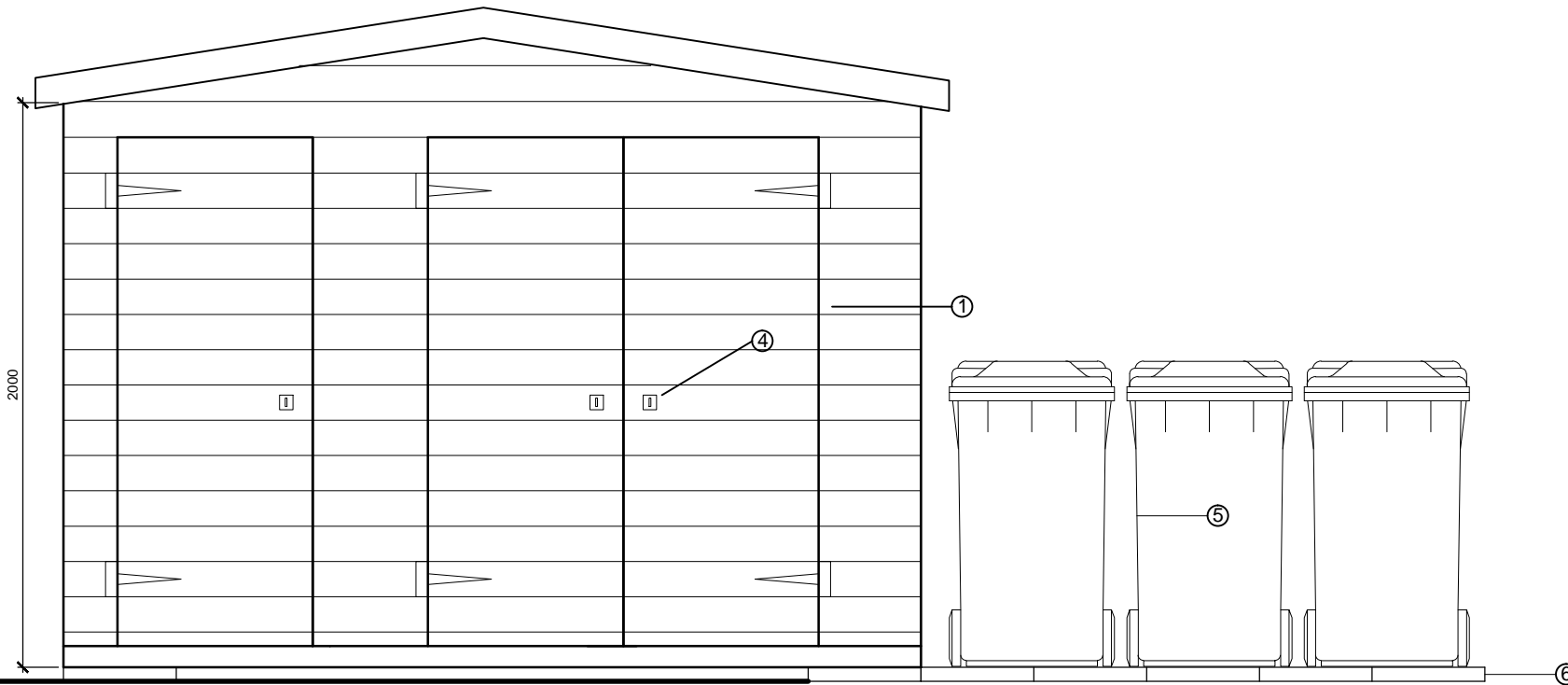
- The contractor is responsible for checking dimensions, tolerances and references. Verify any discrepancies with the Architect before proceeding with the works.
- Where an item is covered by drawings to different scales the larger scale drawing is to be worked to.
- Do not scale drawing. Figured dimensions to be worked to in all cases.

- ① Timber shed construction- 75 x 50 mm sw carcass frame 12mm shiplap cladding, 15mm t+g board to roof with mineral roofing felt cold applied to boarding
- ② 15mm steel rod with tang in mass concrete footing, other end with eye for security chain
- ③ 18mm t+g floor boarding with 1 course of 400x400x50mm thick pc slab on 75mm blinding
- ④ 5 lever lock to door
- ⑤ 120ltr Eurobin to CDC refuse spec and design guide 3 no. (1x dry recycles "blue", 1x domestic refuse "green", 1x garden/food waste "brown".
- ⑥ Marshalls Pendle Riven buff slabs, in rear gardens 600x600mm & 450x450x32mm (impermeable)
- ⑦ Cycle Hanging hoop

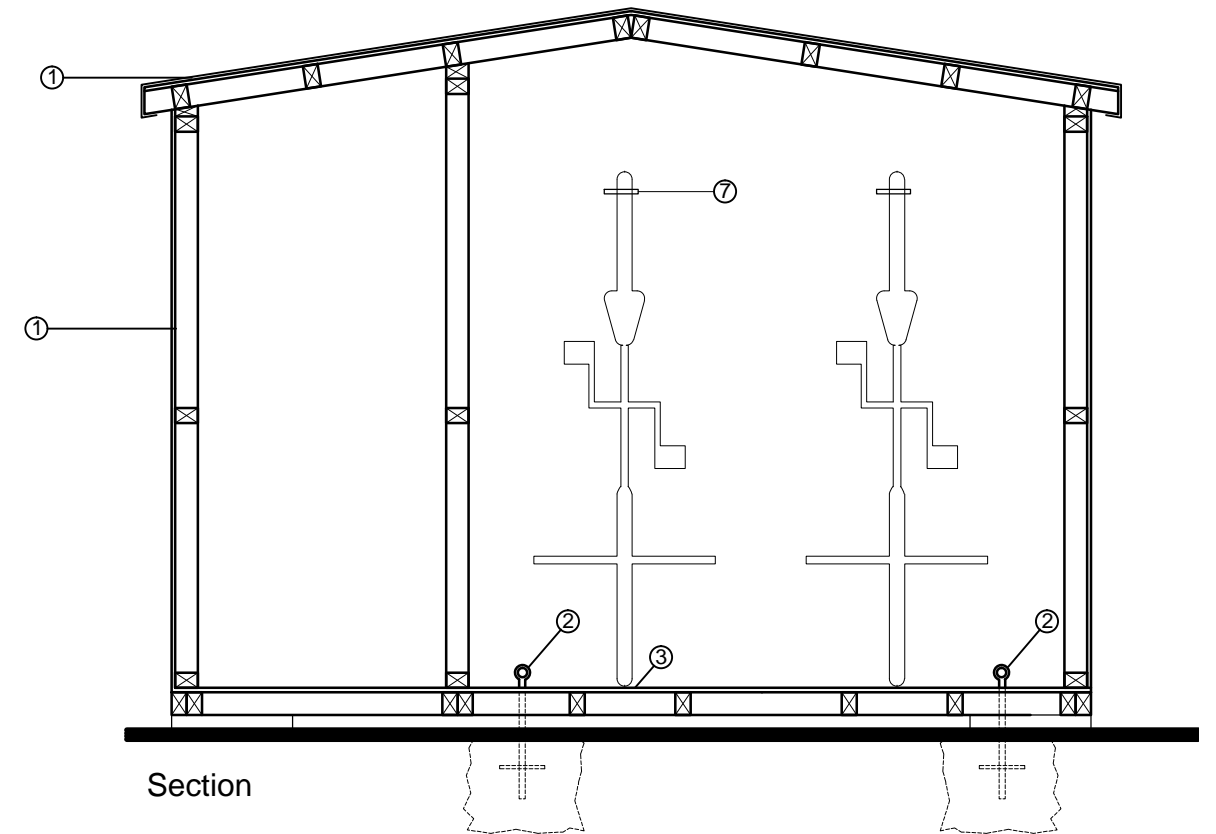
Walkway for rear garden



Plan



Front Elevation



Section

date	rev	revision/author	drawn	TH	project	purpose of issue	
24/06/16	-	Issued for planning MQ/AGF	checked	MQ	Bicester Eco Town Exemplar Site, Phase 2	PLANNING	
			scale	1:25	drawing	GARDEN SHED / CYCLE STORE	
			date	23/02/16		drawing no	AL4908-2103
PRP Architects © 10 Lindsey Street, London, EC1A 9HP 020 7653 1200						rev	-

