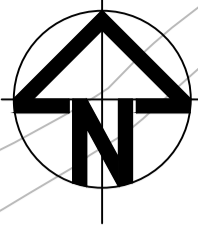
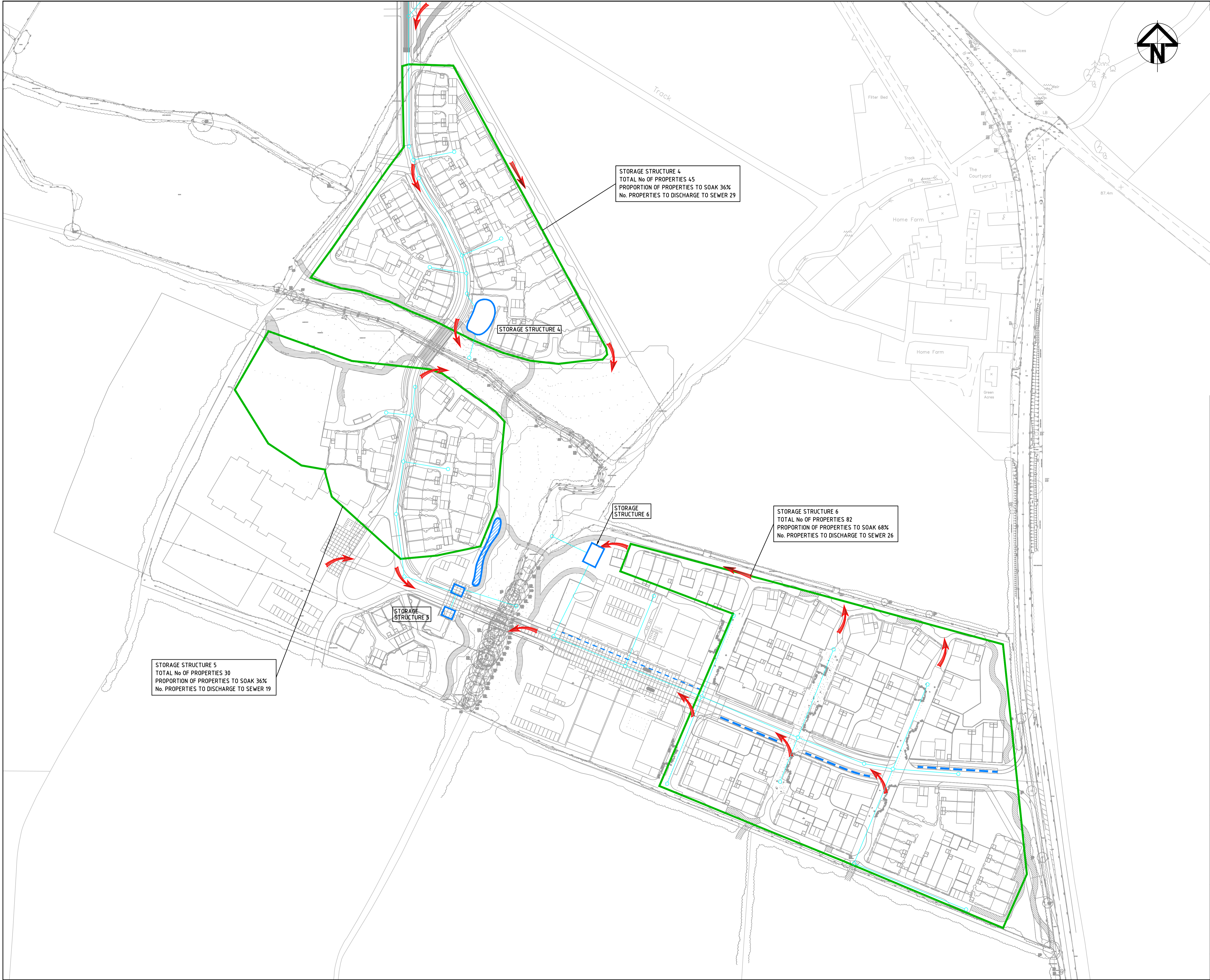


- KEY**
- SURFACE WATER PIPE RUN
 - HOME ZONE CHANNEL
 - VILLAGE STREET SUDS FEATURE
 - ROADSIDE SUDS FEATURE
 - POND
 - STORAGE STRUCTURE
 - WETLAND AREA / SWALE
 - OVERLAND FLOW PATHS
 - BASIN/POND CATCHMENTS

THE SURFACE WATER PIPE NETWORK SHOWN INDICATES THE MAXIMUM POTENTIAL LENGTH TO VERIFY THE EXTENT OF THE SITE THAT WOULD DRAIN IF DIRECTLY CONNECTED TO A BASIN OR POND. EACH POND CATCHMENT HAS BEEN DEFINED AND BASED ON THE GROUND INVESTIGATION TO DATE. A PROPORTION OF PROPERTIES ARE ASSUMED AS BEING FEASIBLE TO DISCHARGE VIA SOAKAWAYS. THOSE THAT WOULD NOT DRAIN BY SOAKAWAY WOULD DISCHARGE TO BASINS/PONDS. AREAS WHICH ARE DRAINED BY SOAKAWAY WOULD NOT NEED THE PIPE NETWORK INDICATED AND THEREFORE THE CONSTRUCTED NETWORK WOULD BE SIGNIFICANTLY SMALL. SUBJECT TO THE FINDINGS OF THE SITE INVESTIGATION AT DETAILED DESIGN STAGE.

PROPERTY ROOF AREA (INCLUDING GARAGE) HAS BEEN ASSUMED TO BE 90m²

01	FIRST ISSUE	24/11/10
Issue	Description	Date
Status		
Scalcs	1:1000	Author P. WILLIAMS
Original Size	A1	Checker M. PEARSON
Height Datum	-	Approver SA. DAVIES
Grid	O.S.	© Copyright reserved
F:\projects\7461 UA001881-UP21D-01-EXEMPLAR SITE HIGHWAYS DRAIN		
Client		
Hyder Consulting (UK) Limited 29, Bressenden Place London SW1E 5DZ Tel: +44 (0)870 000 3006 Fax: +44 (0)870 000 3906		
Project		
BICESTER ECO DEVELOPMENT		
Title		
EXEMPLAR SITE SURFACE WATER DRAINAGE LAYOUT SHEET 1 OF 2		
Drawing No.	Project No.	Issue
7160	UA001881	01



- KEY**
- SURFACE WATER PIPE RUN
 - HOME ZONE CHANNEL
 - VILLAGE STREET SUDS FEATURE
 - ROADSIDE SUDS FEATURE
 - POND
 - STORAGE STRUCTURE
 - WETLAND AREA / SWALE
 - OVERLAND FLOW PATHS
 - BASIN/POND CATCHMENTS

THE SURFACE WATER PIPE NETWORK SHOWN INDICATES THE MAXIMUM POTENTIAL LENGTH TO VERIFY THE EXTENT OF THE SITE THAT WOULD DRAIN IF DIRECTLY CONNECTED TO A BASIN OR POND. EACH POND CATCHMENT HAS BEEN DEFINED AND BASED ON THE GROUND INVESTIGATION TO DATE. A PROPORTION OF PROPERTIES ARE ASSUMED AS BEING FEASIBLE TO DISCHARGE VIA SOAKAWAYS. THOSE THAT WOULD NOT DARIN BY SOAKAWAY WOULD DISCHARGE TO BASINS/PONDS. AREAS WHICH ARE DRAINED BY SOAKAWAY WOULD NOT NEED THE PIPE NETWORK INDICATED AND THEREFORE THE CONSTRUCTED NETWORK WOULD BE SIGNIFICANTLY SMALL. SUBJECT TO THE FINDINGS OF THE SITE INVESTIGATION AT DETAILED DESIGN STAGE.

PROPERTY ROOF AREA (INCLUDING GARAGE) HAS BEEN ASSUMED TO BE 90m²

01	FIRST ISSUE	24/11/10
Issue	Description	Date
Status		
Scale	1:1000	Author P. WILLIAMS
Original Size	A1	Checker M. PEARSON
Height Datum	-	Approver SA. DAVIES
Grid	O.S.	© Copyright reserved
<div> <div> </div> <div> </div> </div>		
<div> <div> </div> <div> Hyder Consulting (UK) Limited 29, Bressenden Place London SW1E 5DZ Tel: +44 (0)870 000 3006 Fax: +44 (0)870 000 3906 </div> </div>		
<div> <div>Project</div> <div>BICESTER ECO DEVELOPMENT</div> </div>		
<div> <div>Title</div> <div>EXEMPLAR SITE SURFACE WATER DRAINAGE LAYOUT SHEET 2 OF 2</div> </div>		
Drawing No.	Project No.	Issue
7161	UA001881	01