

PLANT SCHEDULE - BICESTER ECO-TOWN NORTH FRONTAGE

(AS PER HYDER SCHEDULE UA001881-701-1102-06. PLEASE NOTE SIZE INCREASE OF QUERCUS ROBUR FASTIGIATA FROM HYDER SCHEDULE)

Trees	Root condition	Height	Breaks	Transplanted	Girth	Form	Qty. No.
Acer campestre	Bare Root	250-300cm	5	3x	8-10cm	Feathered	1
Quercus robur	Bare Root	175-200cm	5	2x		Feathered	2
Quercus robur Fastigiata	Root Ball	min 450cm	3	3x	20-25cm	Semi Mature	2

Native Hedge Mix (Total Area 200m2)	Root condition	Height/Spread/Age @ Planting	%
Crataegus monogyna	Bare Root	160cm 1+1 TRA min. 3 breaks	40
Cornus sanguinea	Bare Root	160cm 1+1 TRA min. 3 breaks	20
Corylus avellana	Bare Root	160cm 1+2 TRA min. 3 breaks	4
Ilex aquifolium	Container	160cm 2L leader with laterals	5
Ligustrum vulgare	Bare Root	160cm 1+1 TRA min. 4 branches	5
Prunus spinosa	Bare Root	160cm 1+1 TRA min. 3 breaks	12
Rosa arvensis	Bare Root	160cm 1+1 Branched	4
Rosa canina agg	Bare Root	160cm 1+1 Branched	4
Sambucus nigra	Bare Root	160cm 1+0 Branched	2
Viburnum lantana	Bare Root	160cm 1+0 Branched	2
Viburnum opulus	Bare Root	160cm 1+1 Branched	2

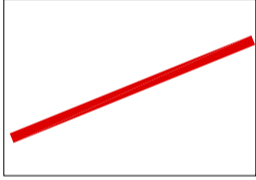
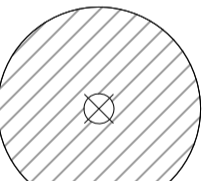
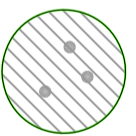

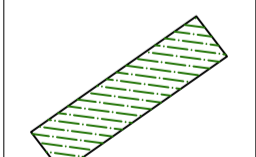
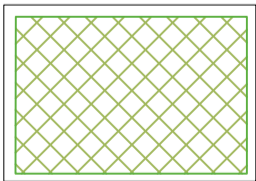
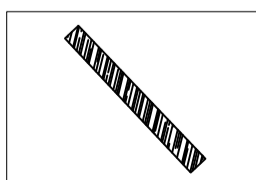
Grass Turf Lawn Oversown with Wildflower Mix (Total Area 140m²)

Turf by Rolawn or equivalent

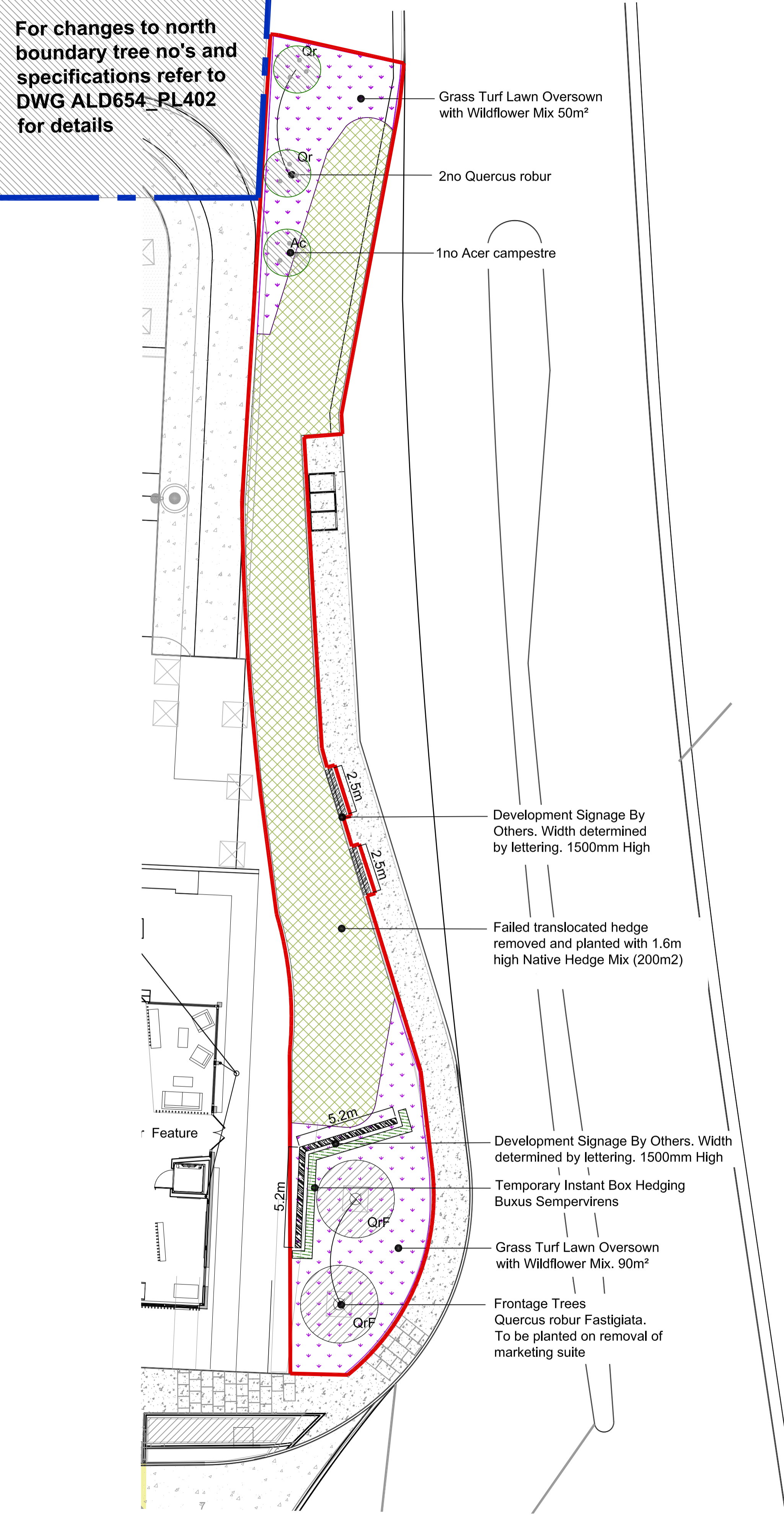
Wildflower seed by Emorsgate: EM1 – basic general purpose meadow mixture or equivalent. Sown @ 4g/m²

NEW Hedging (12 linear metres)	Form
Buxus sempervirens	Instant Hedge Planted and Maintained at 600mm Height

KEY

-  BOUNDARY FOR FRONTAGE DEVELOPMENT
-  QUERCUS ROBUR FASTIGIATA SIZE INCREASE FROM HYDER PLANNING DRAWING 701-929-04 FROM 16-18 GIRTH TO 20-25
-  FEATHERED TREES SIZE AND SPECIES AS HYDER PLANNING DRAWING 701-929-04 AS SCHEDULE
-  TURF LAWN OVERSOWN WITH WILDFLOWER MIX SEE HYDER PERIMETER PLANNING DRAWING 701-929-04
-  BOX HEDGE
-  NATIVE HEDGE MIX
-  DEVELOPMENT SIGNAGE BY OTHERS 1500mm HIGH. WIDTH TBC BY OTHERS

For changes to north boundary tree no's and specifications refer to DWG ALD654_PL402 for details



All dimensions to be verified on site. Figure dimensions to take precedence to those scaled. Any areas indicated on this drawing are for guidance only, no responsibility is taken for their accuracy. The drawing is the property of Applied Landscape Design Limited. Copyright is reserved by them and the drawing is issued on the condition that it is not copied, reproduced, related or disclosed to any unauthorised person, either wholly or in part without the written consent in writing of Applied Landscapes.

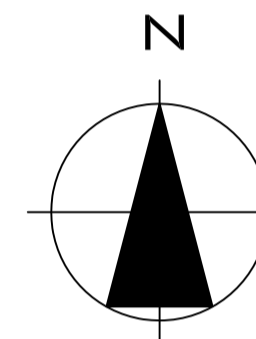
© 2014 Applied Landscape Design Limited. All rights reserved.

CDM/H&S:

CDM RISKS
The works illustrated on this drawing have been reviewed against the Design CDM Risk Register and significant risks are noted as:

- Construction:
- Working in close proximity to highway
- Maintenance:
- Working in close proximity to highway
 - Tree Hedge Pruning
- Demolition:
- Working in close proximity to highway

NOTES / KEY:
NOTE: SIGNAGE TO BE REMOVED WITH MARKETING SUITE



REFERENCE DRAWINGS/DOCUMENTS

Reference No.	Reference Drawing/Document
701-1102-06	Infrastructure Planting Schedule by HYDER
701-929-04	Perimeter Planting Plan by HYDER

REVISIONS

no.	issued	date
P02	Planning	23.01.15
P01	Information	05.12.14

CLIENT:
A2DOMINION

LANDSCAPE ARCHITECT:
ALD applied landscape design
The Threshing Barn, Bignell Park
Barns, Chesterton, Nr. Bicester,
Oxfordshire OX26 1TD
Tel: 01869 249776
Fax: 01869 327513
Email: mail@appliedlandscape.co.uk

PROJECT:
BICESTER ECO TOWN EXEMPLAR SITE

DRAWING TITLE:
**NORTH FRONTAGE
SOFT LANDSCAPE PLAN**

drawn: AF	checked: OM
scale: 1:150 @A1	date: 05.12.2014
status: Planning	xref file ref: ALD654_PLbase-Hoarding

PROJECT NO.	DRAWING NUMBER:	REVISION:
ALD654	PL402	P02