

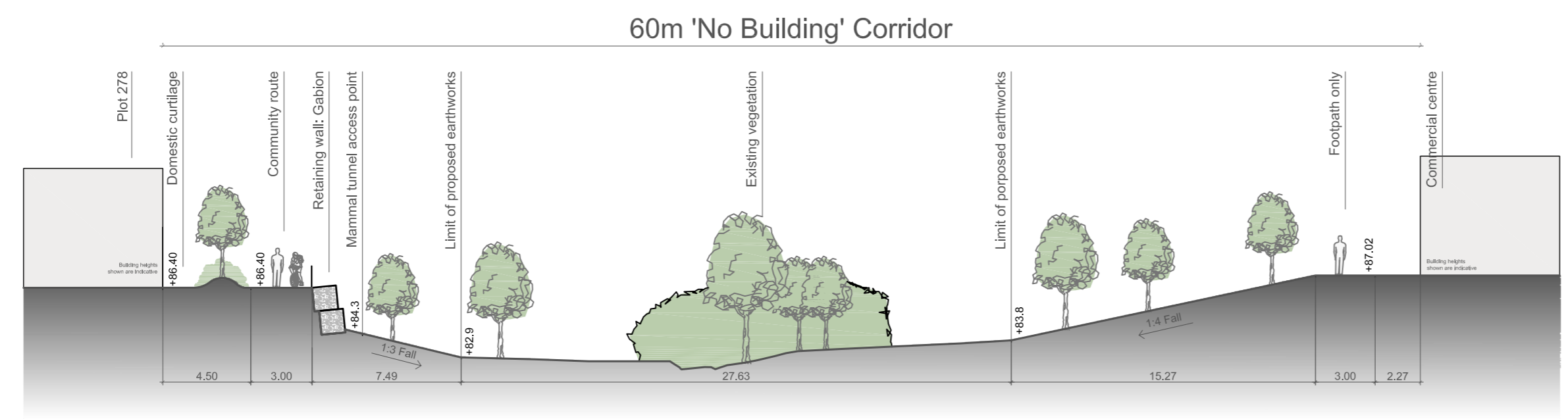
MATCH LINE
FOR CONTINUATION
SEE DWG 701-222

Bridge Easement = 6m

Bridge Easement = 4m

See drg no.
UA001881-701-220 for
NEAP General Arrangement

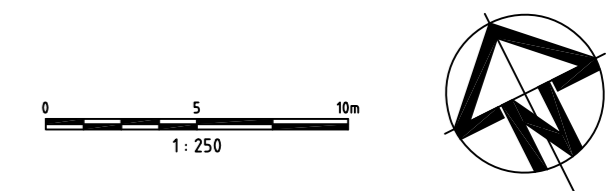
Plan
1:250 @ A1



Section A-A
1:250 @ A1

KEY

Existing	
	Existing tree and hedge
	Existing tree to be removed
Proposed	
	Proposed tree See drawings UA001881-905 to 919
	Hoggin surface and timber edge board
	Bollard
	Gabion retaining wall
	Proposed handrail
	Proposed timber post and single rail guard rail
	FRA outline: 1-1000yr floodline
	FRA outline: 1-100yr + Climate Change
	SUDS pond (annotated where not planted)
	Wetland scrape (annotated where not planted)
	Netpave 50 Grass paving system See drawing UA001881-802-010
	Exemplar site boundary
	Proposed foot/cycle bridge - Design TBC
	Proposed boardwalk
	Limit of Building/Overworks
	Gradient Note: If steeper than 1:3 soil matting reinforcement may be required (e.g. Geo-Jute or similar approved)
	Proposed planting



02	Addition of SUDS access track + minor changes	23-10-12
01	DRAFT	01-10-12
Issue	Description	Date

Status: **CONSTRUCTION**

Scales	1:250 @ A1	Current Issue Signatures	
		Author B.CONNOLLEY	
Original Size	A1	Checker A.VICTORY	
Height Datum	O.S.	Approver A.ZORLUTUNA	
Grid	O.S.	© Copyright reserved	

Filename: UA001881-701-221 RIVER CORRIDOR GENERAL ARRANGEMENT 10F2.DWG

Client:



Hyder HYDER CONSULTING (UK) Limited
5th Floor, The Pithay
All Saints Street
Bristol, England
BS1 2NL
Tel: +44 (0)870 000 3003
Fax: +44 (0)870 000 3903

Project:
**Bicester Southfields
Eco Development**

Title:
**River Corridor
General Arrangement 1of2**

Drawing No.	Project No.	Issue
701-221	UA001881	02