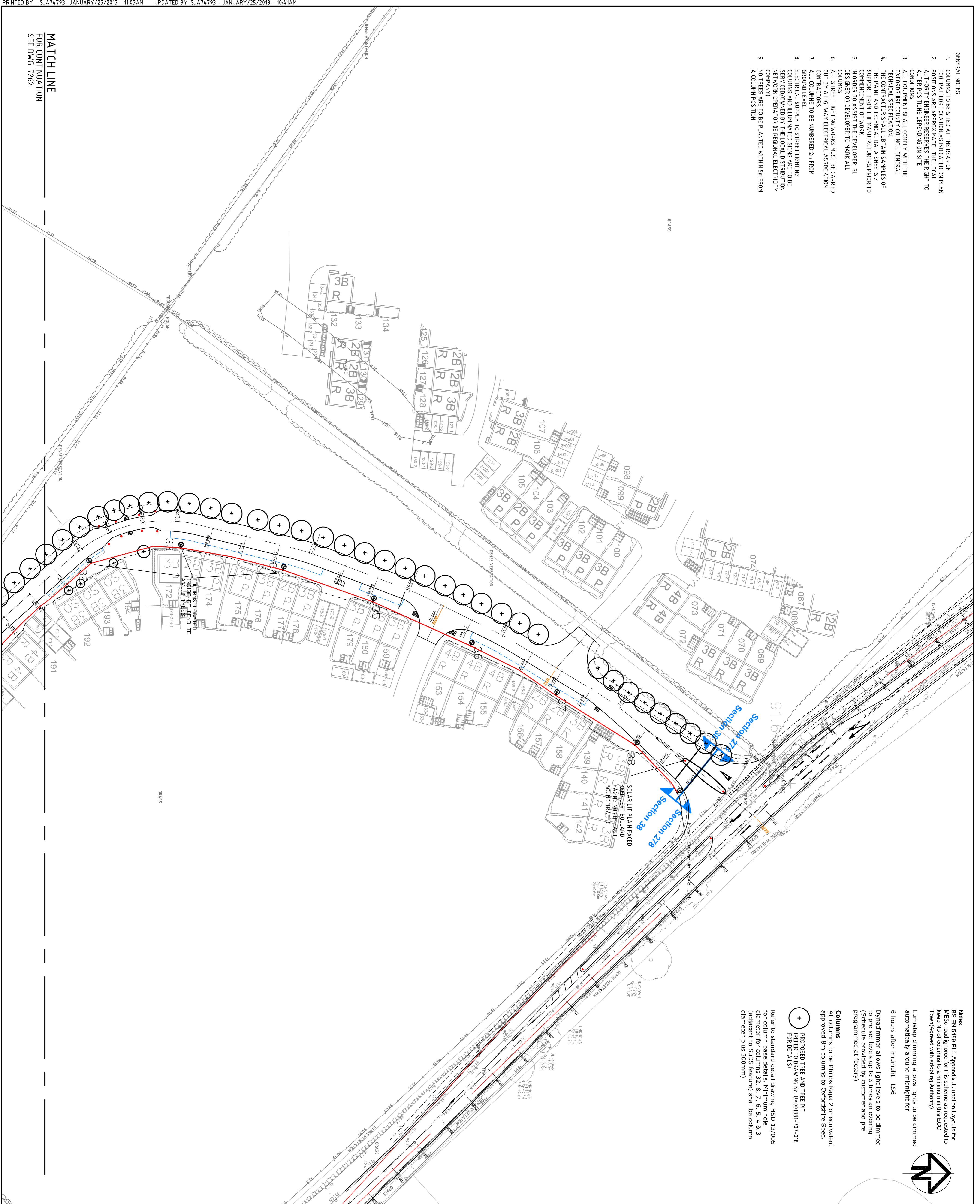
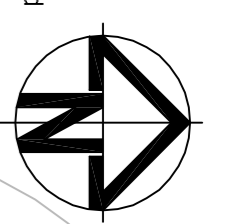


- GENERAL NOTES**
1. COLUMNS TO BE SITED AT THE REAR OF FOOTPATH OR LOCATION AS INDICATED ON PLAN
 2. POSITIONS ARE APPROXIMATE. THE LOCAL AUTHORITY ENGINEER RESERVES THE RIGHT TO ALTER POSITIONS DEPENDING ON SITE CONDITIONS.
 3. ALL EQUIPMENT SHALL COMPLY WITH THE OXFORDSHIRE COUNTY COUNCIL GENERAL TECHNICAL SPECIFICATION.
 4. THE CONTRACTOR SHALL OBTAIN SAMPLES OF THE PAINT AND TECHNICAL DATA SHEETS / SUPPORT FROM THE MANUFACTURERS PRIOR TO COMMENCEMENT OF WORK.
 5. IN ORDER TO ASSIST THE DEVELOPER, SU DESIGNER OR DEVELOPER TO MARK ALL COLUMNS.
 6. ALL STREET LIGHTING WORKS MUST BE CARRIED OUT BY A QUALIFIED ELECTRICAL ASSOCIATION CONTRACTOR.
 7. ALL COLUMNS TO BE NUMBERED 2m FROM GROUND LEVEL.
 8. ELECTRICAL SUPPLY TO STREET LIGHTING COLUMNS AND ILLUMINATED SIGNS ARE TO BE SERVICED/OWNED BY THE LOCAL DISTRIBUTION NETWORK OPERATOR (IE REGIONAL ELECTRICITY COMPANY).
 9. NO TREES ARE TO BE PLANTED WITHIN 5m FROM A COLUMN POSITION.



MATCH LINE
FOR CONTINUATION
SEE DWG 7262

- Notes:**
- BS EN 5489 Pt 1 Appendix J Junction Layouts for M&E: road ignored for this scheme as requested to keep No of columns to a minimum in this ECO Town (Agreed with adopting Authority)
 - Lumistep dimming allows lights to be dimmed automatically around midnight for 6 hours after midnight - L56
 - Dynadimmer allows light levels to be dimmed to pre set levels up to 5 times an evening (Schedule provided by customer and pre programme at factory)
- Columns**
- All columns to be Phillips Kapa 2 or equivalent approved 8m columns to Oxfordshire Spec.
- Proposed Tree and Tree Pit**
- REFER TO DRAWING No. UA001881-107-018 FOR DETAILS
- Refer to standard detail drawing HSD 13/005 for column base details. Minimum hole diameter for columns 32, 8, 7, 6, 5, 4 & 3 (adjacent to SUDS feature) shall be column diameter plus 300mm)



KEY

- Iridium 2 BGP353 - 114w (Total System)
- Wattage/LED luminaire with DM optic, Dail dimmable electronic driver 12,688 lm, 4000K Neutral white with one piece electronic mnl photocell (Zodion SS12X11) set at 55 lux on 28 lux off.
- Luminaire installed 8m (Oxfordshire spec) column, Post top mounted at 5 deg tilt
- Ref: Iridium 2 BGP353 1XGRN127-25/740 D9 DW P3 (SS12A)-R4L 6013
- Dimmable driver allows for future dimming either stand alone Lumistep or Dynadimmer or remote Stansense 2. Remove D9 ref if no dimming required)
- Iridium 2 BGP353 - 114w (Total System)
- Wattage/LED luminaire with DM optic, Dail dimmable electronic driver 12,688 lm, 4000K Neutral white with one piece electronic mnl photocell (Zodion SS12X11) set at 55 lux on 28 lux off.
- Luminaire installed 8m (Oxfordshire spec) column, Luminaire side entry mounted on 1.5m 5 tile deg bracket.
- Ref: Iridium 2 BGP353 1XGRN127-25/740 D9 DW P3 (SS12A)-R4L 6013
- Dimmable driver allows for future dimming either stand alone Lumistep or Dynadimmer or remote Stansense 2. Remove D9 ref if no dimming required)
- Iridium 2 BGP353 - 114w (Total System)
- Wattage/LED luminaire with DM optic, Dail dimmable electronic driver 12,688 lm, 4000K Neutral white with one piece electronic mnl photocell (Zodion SS12X11) set at 55 lux on 28 lux off.
- Luminaire installed on Phillips Flange Plate type Kapa 2 8m column to Oxfordshire spec, Post top mounted at 5 deg tilt
- Ref: Iridium 2 BGP353 1XECO127-25/740 D9 DW P3 (SS12A)-R4L 6013
- Dimmable driver allows for future dimming either stand alone Lumistep or Dynadimmer or remote Stansense 2. Remove D9 ref if no dimming required)
- Iridium 2 BGP353 - 114w (Total System)
- Wattage/LED luminaire with DM optic, Dail dimmable electronic driver 12,688 lm, 4000K Neutral white with one piece electronic mnl photocell (Zodion SS12X11) set at 55 lux on 28 lux off.
- Luminaire installed 8m (Oxfordshire spec) column, Post top mounted at 5 deg tilt
- Ref: Iridium 2 BGP353 1XGRN127-25/740 D9 DW P3 (SS12A)-R4L 6013
- Dimmable driver allows for future dimming either stand alone Lumistep or Dynadimmer or remote Stansense 2. Remove D9 ref if no dimming required)

Status

DRAFT

Issue	Description	Date
01	FIRST ISSUE	13/07/12
02	STREET LIGHTING LAYOUT REVISED	26/07/12
03	HIGHWAY BOUNDARY REVISED	06/11/12
04	TREES ADDED	04/12/12
05	STREET LIGHTING LAYOUT & NOTES REVISED	25/01/13

Scales

Original Size	Author
A1	GREEKER SLOMES
0.5	SAUDAVES
0.5	SAUDAVES

Client

Flennyng261-7264-UA001881-UP210-S38-05-STREET LIGHTING.DWG

Hyder Consulting (UK) Limited
 29, Bessenden Place
 London
 SW1E 6DZ
 Tel: +44 (0)870 000 3906
 Fax: +44 (0)870 000 3906

Project

BICESTER ECO
 DEVELOPMENT EXEMPLAR SITE

Title

EXEMPLAR SITE (S38)
 STREET LIGHTING

Sheet

SHEET 10F 4

Drawing No

7261

Project No

UA001881

Issue

05