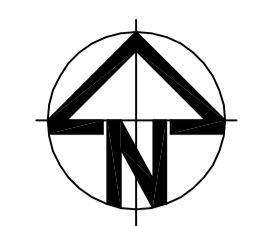


CAD FILE: K:\UA001881_BicesterEco\CurrentDrawings\Civil Engineering\7238-7241-UA001881-UP210-S38-E-GENERAL ARRANGEMENT (PDS MATCH).dwg
 PRINTED BY: DHA16298 - MARCH/2015 - 11:48AM

WILLMOTT DIXON HOUSING REVIEWED	
PRELIMINARY	STATUS
FOR COMMENT	A
FOR CONSTRUCTION	B
SIGNED ND	C
DATE	23.03.15

MATCH LINE
 FOR CONTINUATION
 SEE DWG 7239

GENERAL NOTES
 1. REFER TO DRAWINGS UA001881 / 7247 TO 7250 FOR SURFACING AND KERBING DETAILS
 2. REFER TO DRAWING Nos UA001881 / 7253 TO 7256 FOR DRAINAGE DETAILS
 Refer to planting plan 701-306 to 701-309 for trees along the spine road.



KEY

- PROPOSED ADOPTABLE CARRIAGEWAY
- PROPOSED ADOPTABLE FOOTWAY
- PROPOSED COMMUNITY FOOTPATH
- PROPOSED ADOPTABLE VERGE
- PROPOSED ADOPTABLE ROADSIDE SUDS FEATURE
- PROPOSED SUDS/POND FEATURE
- POND MAINTENANCE ACCESS (3.0m Wide)
- PROPOSED COMMUNITY STREET CONNECTION
- GATEWAY FEATURE (DETAIL IN ABEYANCE)
- VISIBILITY SPLAY - CONDITIONED RELATING TO HOUSEHOLD COVENANT
- FOOTWAY VEHICULAR CROSSING
- UNCONTROLLED CROSSING POINT
- 4.0m FORWARD VISIBILITY SPLAY
- 2.4m x 3.3m VISIBILITY SPLAY
- 2m x 2m VISIBILITY SPLAY
- PROPOSED BOLLARD (REFER TO O.C.C. DRAWING No. HSD/1200/220 FOR DETAILS)
- PROPOSED TREE AND TREE PIT (REFER TO DRAWING Nos. UA001881-701-800 AND 701-801 FOR DETAILS)
- FULLY ENCLOSED 3 BAY PASSENGER SHELTER, DETAILS T.B.C BY OXFORDSHIRE C.C.
- FOOTWAY EDGING
- DROP KERB TYPE
- STANDARD KERB 125mm UPSTAND GENERAL
- KASSEL KERB
- FLUSH KERB TYPE
- KERB DRAINAGE BLOCK
- DROPPED KERB DRAINAGE BLOCK
- SUDS FEATURE

Issue	Description	Date
E	BASE PLAN UPDATED	20/03/15
D	NOTES ADDED	17/04/14
C	GENERAL REVISIONS	04/04/14
B	MINOR REVISIONS	11/03/14
A	CONSTRUCTION ISSUE	09/08/13
11	TREE LAYOUT REVISED	25/03/13
10	HIGHWAY BOUNDARY REVISED	06/11/12
09	SPINE ROAD TREE LAYOUT REVISED	26/10/12
08	GENERAL REVISIONS	19/10/12
07	MINOR REVISIONS	27/07/12
06	REVISED TO OCC COMMENTS	MAR 12
05	CARRIAGEWAY WIDTHS & BUS STOPS REVISED	02 Dec 11

FOR CONSTRUCTION		
Scales	1:500	Author M.LLEWELIN
Original Size	A1	Checker S.A.DAVIES
Height Datum	O.S.	Approver S.A.DAVIES
Grid	O.S.	Copyright reserved

Client: UA001881-UP210-S38-E-GENERAL ARRANGEMENT (PDS MATCH)



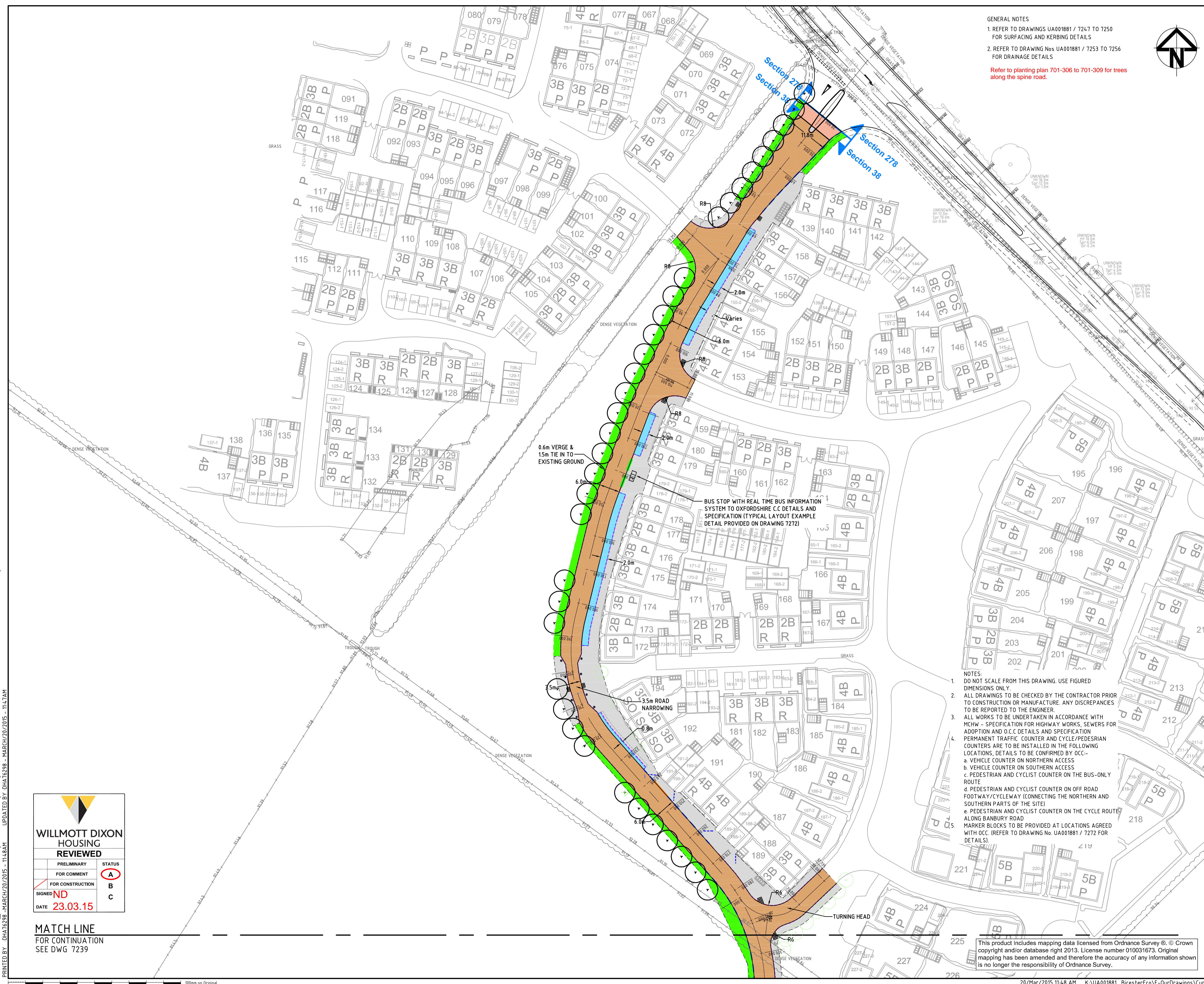
Hyder Consulting (UK) Limited
 HCL House
 St. Mellons Business Park
 Fortran Road, St Mellons
 Cardiff
 CF3 0EY
 Tel: +44 029 20926700
 Fax: +44 029 20925222

Project: BICESTER ECO DEVELOPMENT EXEMPLAR SITE

Title: SPINE ROAD (S38) GENERAL ARRANGEMENT SHEET 1 OF 4

Drawing No.	Project No.	Issue
7238	UA001881	E

- NOTES:**
- DO NOT SCALE FROM THIS DRAWING. USE FIGURED DIMENSIONS ONLY.
 - ALL DRAWINGS TO BE CHECKED BY THE CONTRACTOR PRIOR TO CONSTRUCTION OR MANUFACTURE. ANY DISCREPANCIES TO BE REPORTED TO THE ENGINEER.
 - ALL WORKS TO BE UNDERTAKEN IN ACCORDANCE WITH MCHW - SPECIFICATION FOR HIGHWAY WORKS. SEWERS FOR ADOPTION AND O.C.C. DETAILS AND SPECIFICATION PERMANENT TRAFFIC COUNTER AND CYCLE/PEDESTRIAN COUNTERS ARE TO BE INSTALLED IN THE FOLLOWING LOCATIONS. DETAILS TO BE CONFIRMED BY OCC--
 a. VEHICLE COUNTER ON NORTHERN ACCESS
 b. VEHICLE COUNTER ON SOUTHERN ACCESS
 c. PEDESTRIAN AND CYCLIST COUNTER ON THE BUS-ONLY ROUTE
 d. PEDESTRIAN AND CYCLIST COUNTER ON OFF ROAD FOOTWAY/CYCLEWAY (CONNECTING THE NORTHERN AND SOUTHERN PARTS OF THE SITE)
 e. PEDESTRIAN AND CYCLIST COUNTER ON THE CYCLE ROUTE ALONG BANBURY ROAD
 MARKER BLOCKS TO BE PROVIDED AT LOCATIONS AGREED WITH OCC (REFER TO DRAWING No. UA001881 / 7272 FOR DETAILS).



This product includes mapping data licensed from Ordnance Survey ©. Crown copyright and/or database right 2013. License number 010031673. Original mapping has been amended and therefore the accuracy of any information shown is no longer the responsibility of Ordnance Survey.