

KERBING KEY

- HB2 - 125x255 HB2 kerb (125mm face)
- BN - 125x150 BN15 dropped (15mm face)
- DKO - 125x150 BN15 dropped (0mm face)
- EF - 50x150 EF edging laid flush
- T - Dropper/transition kerb as required
- CS - square edged channel block
- BJ - Blocks Butt Jointed together
- mb - Highway marker block
- TB - Timber Bollard (OCC Approved)
- CS - Circle of Granite Sets
- SC - Stretcher Course
- CS(FD) - Square edge channel with full depth bed

	Permeable Charcon Andover Stratford Infilta Colour - Silver Grey; Laying Pattern - stretcher bond (refer to drg 11-1196-20 - Detail B)
	Permeable Charcon Woburn Rumble Infilta Colour - Rustic; Laying Pattern - stretcher bond (refer to drg 11-1196-20 - Detail B)
	Permeable Charcon Andover Stratford Infilta Colour - Charcoal; Laying Pattern - stretcher bond (refer to drg 11-1196-20 - Detail B)
	Permeable Charcon Infilta Colour - Grey; Laying Pattern - herringbone (refer to drg 11-1196-21 - Detail A)
	Permeable Charcon Infilta Colour - Burnt Oker; Laying Pattern - herringbone (refer to drg 11-1196-21 - Detail A)
	Impermeable Charcon Woburn Rumble Colour - Graphite; Laying Pattern - stretcher bond (refer to drg 11-1196-21 - Detail B)
	Impermeable Natratex surfacing (with contrasting inset colour where noted on plans) (refer to drg 11-1196-20 - Detail A)
	Soft landscaping (refer to Hyder drawings)
	Ecodeck (refer to detail on drg 11-1196-20)
	Granite Sets (refer to detail on drg 11-1196-20)
	Proposed Limit of O.C.C. Section 38 adoption To be agreed
	Limit of Phase 1 works - Refer to Hyder drawings for details of Spine Road
	Sureset Recycled Glass 6mm Aggregate set within granite sets sunk into ground Colour A=Wild Lavender, Colour B=Pacific (refer to detail on drg 11-1196-20)
	Timber Bollard with reflective strip (OCC approved)
	Arc of granite sets laid flush (Double row) (refer to drawing 11-1196-20)
	Resin bond gravel

To be read in conjunction with 12-1196-04 series drawings

	Bench Type 1
	Bench Type 2
	Bench Type 3
	Bench Type 4
	Bench Type 5
	Cycle stand

Drawing to be read in conjunction with 12-1196-04 series drawings

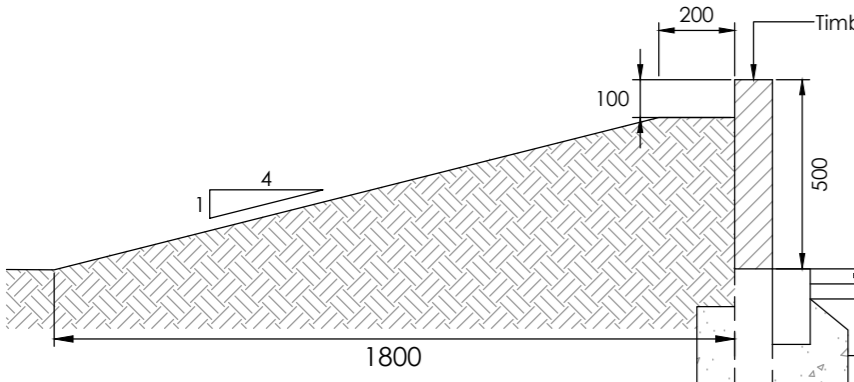
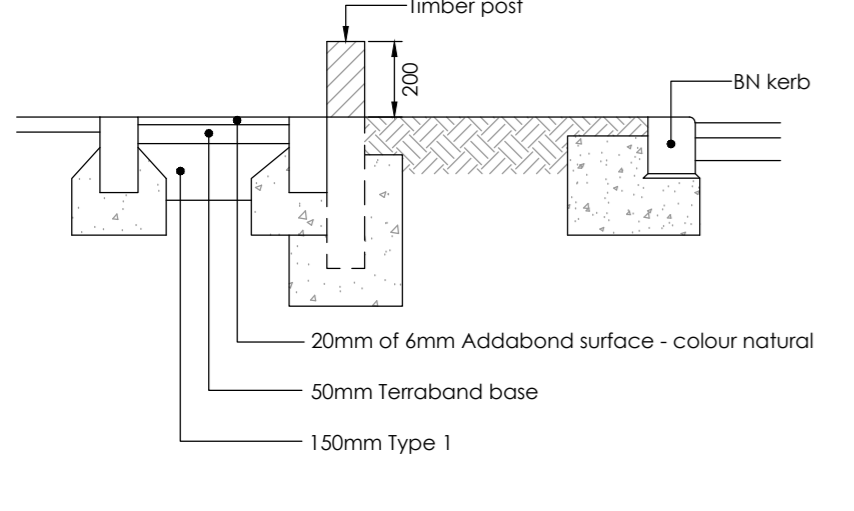
Rev	Drawn by	Chk'd by	Comments	Date
C1	NJ	TST	Issued for construction	23/09/14
C2	NJ	TST	Amendments to clouded area following CDC comments	21/01/15
C3	NJ	TST	Ground graded behind posts	22/01/15
C4	NJ	TST	Sections A-A & B-B timber post details added. See clouded areas	22/05/15
C5	NJ	TST	Stepping stone walkway amended following design team consultation. Sections amended in accordance.	03/06/15
C6	NJ	TST	Key amended, refer to clouded area	02/07/15
C7	NJ	TST	Key amended, refer to clouded area	08/12/15

CLIENT WILLMOTT DIXON HOUSING	DATE 02/07/2013	DESIGNED BY TST	TITLE Community Street 3 Bicester Southfields Eco Village Bicester, Oxon
SCALE 1:100 @ A1			DRAWING NUMBER 12-1196-07 Com3 Rev C7
STATUS CONSTRUCTION			

INFRASTRUCT CS LTD
Consulting Civil and Structural Engineers

The Stables, High Cogges Farm, High Cogges,
Oxford, OX29 6UN
Tel: 01993 709709
Email: info@infrastructcs.co.uk
Web: www.infrastructcs.co.uk

SECTION A-A (showing resin bond aggregate)
(1:20)



SECTION B-B (showing slab)
(1:20)

Non permeable (no-nibs) block paviour to be laid vertically along edge of slabs, bedded on S12 concrete bed & haunch whilst plastic