

For all Perimeter planting see drawing
UA001881-701-929 Perimeter Planting Plan

KEY

- Existing tree and hedge
- Proposed tree
- Proposed hedge
- Amenity grass - Emorsgate EG22 Lawn Mixture - refer to schedule UA001881-701-1103
- Planting area
- EM6 Meadow mix for chalk and limestone soils (Perimeter planting) refer to schedule UA001881-701-1103.
- EH1 Hedgerow mix (shade tolerant) refer to schedule UA001881-701-1103.
- Proposed tree grille - refer to drg no. UA001881-701-800
- Proposed tree pit, Root barrier = blue line, Refer to drg no. UA001881-701-800/801
- Green Roofs - refer to drg no. UA001880-701-833
- SUDS - refer to drg no. UA001881-701-811
- Exemplar boundary line
- Adoption boundary line
- Perimeter planting extents
- Light column

Community Street 2 - Species List

Plant type	Common name	Reference
Non-edible shrub		
Carpinus betulus	Hornbeam	CAR BET hedge
Edible Climbers		
Vitis vinifera 'Fortana'	Green grape	VIT VIN
Edible shrub		
Ribes uva-ursi	Gooseberry	RIB LIVE
Ribes nigrum	Blackcurrant	RIB NIG
Ribes rubrum	Red currant	RIB RUB
Rubus loganobaccus	Logan berry	RUB LOG
Herbs		
Lavendula angustifolia	Lavender	LAV AUG
Rosemarinus officinalis	Rosemary	ROS OFF
Origanum vulgare	Origan	ORI VUL
Herbaceous/Perennial		
Echinacea purpurea	Coneflower	ECH PUR
Heuchera Palace purple	Heuchera	HEU PAL
Ground Cover		
Berginea cordifolia	Berginea	BER COR
Liorope muscari	Big Blue Lily turf	LIO MUS
Ajuga reptans	Bugle	AJU REP

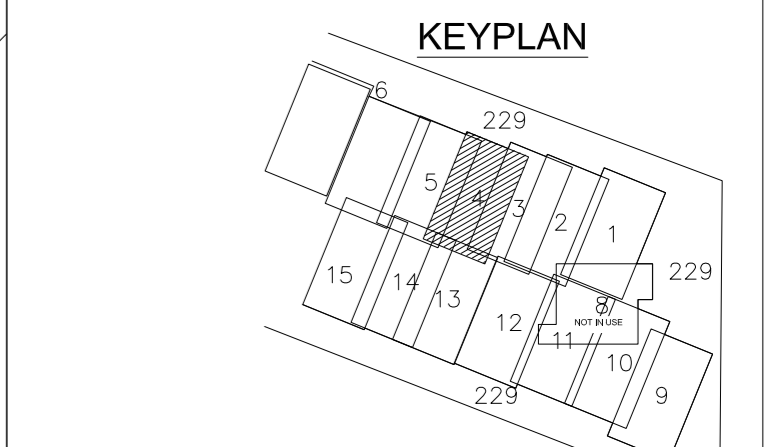
Trees

Tree Species*	Common name	Reference
Acer campestre	Field Maple	ACE CAM
Betula pendula multi stem	Silver Birch	BET PEN multi stem
Prunus 'Sunburst'	Cherry	PRU SUN
Sorbus aria	Common Whitebeam	SOR ARI
Prunus avium	Native Cherry	PRU AVI
Betula pendula	Silver Birch	BET PEN

*Where a tree species is specified in both standard and extra heavy standard size, an affix of 'S' denotes standard size

For detailed Plant Schedule, refer to:
UA001881-701-1102 Infrastructure Planting Schedule
UA001881-701-1103 Phase 1 Planting Schedule
For Topsoiling plans, refer to: UA001881-701-114 to 116

Tree locations and planting areas layout by ICS.
Root barrier & tree pits - locations to be checked on site in line with drawings UA001881-701-800/801



05	Planting revised to align with scheme revisions & root barrier revisions	24-10-15
04	'DRAFT' removed, tree pits added, note added, key revised	29-08-14
03	Drawing updated to CIS layout and WDH comments	14-05-14
02	General Amendments. Issue for planning condition discharge	21-12-12
V	Initial Draft	31-08-12

Issue Description			Date
Status			PLANNING
Scales	1:100 @ A1	Current Issue Signatures	
Original Size	A1	Author	A.VICTORY
Height Datum	O.S.	Checker	A.VICTORY
Grid	O.S.	Approver	A.ZORLUTUN
© Copyright reserved			

Client

HYDER CONSULTING (UK) Limited

5th Floor, The Pithay
All Saints Street
Bristol, England
BS1 2NL

Tel: +44 (0)870 000 3003
Fax: +44 (0)870 000 3903

Project

Bicester
Eco Development

Title

Planting Plan 4 - Phase 1
Community Street 2

Drawing No.	Project No.	Issue
701-908	UA001881	05