

KEY

- Existing tree and hedge
- Proposed tree
- Proposed hedge
- Amently grass - Emorsgate EG22 Lawn Mixture - refer to schedule UA001881-701-1103
- Planting area
- EM6 Meadow mix for chalk and limestone soils (Perimeter planting) refer to schedule UA001881-701-1103.
- EH1 Hedgerow mix (shade tolerant) refer to schedule UA001881-701-1103.
- Proposed tree grille - refer to drg no. UA001881-701-800
- Proposed tree pit. Root barrier = blue line. Refer to drg no. UA001881-701-800/801
- Green Roofs - refer to drg no. UA001880-701-933
- SUDS - refer to drg no. UA001881-701-811
- Exemplar boundary line
- Adoption boundary line
- Perimeter planting extents
- Light column

Planting Plan 11 - Species List

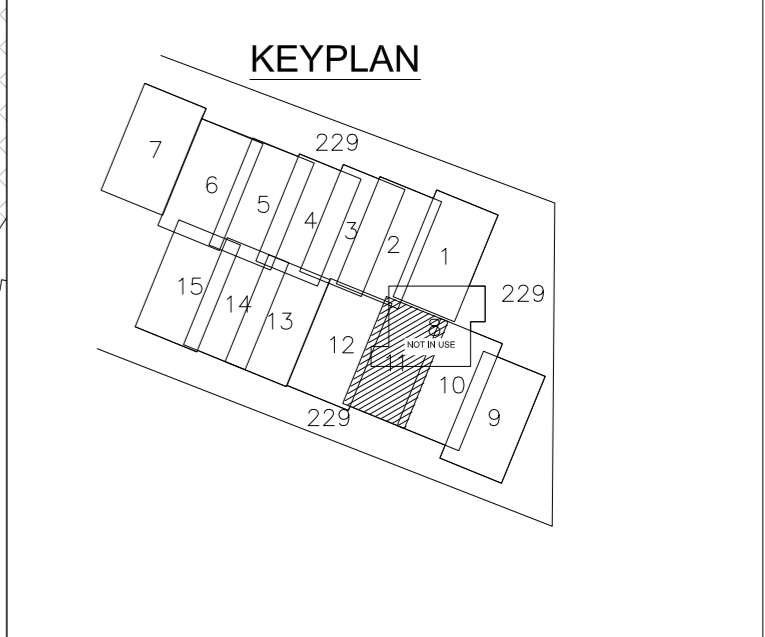
Plant type	Common name	Reference
Non edible Shrubs		
Carpinus betulus	Hornbeam	CAR BET hedge
Cornus sanguinea	Dogwood	COR SAN
Mahonia nervosa	Dwarf Oregon grape	MAH NER
Edible shrub		
Rosa Rugosa	Ramanas Rose	ROS RUG
Herbs		
Lavendula augustifolia	Lavender	LAV AUG
Fragria vesca	Wild strawberry	FRA VES
Herbaceous/Perennial		
Lamium maculatum	Spotted dead nettle	LAM MAC
Ground Cover		
Liorope muscari	Big Blue Lily turf	LIO MUS

Trees

Tree Species	Common name	Reference
Carpinus betulus Fastigiata	Fastigiata Hornbeam	CAR BET

For detailed Plant Schedule, refer to:
 UA001881-701-1102 Infrastructure Planting Schedule
 UA001881-701-1103 Phase 1 Planting Schedule

Tree locations and planting areas layout by ICS.
 Root barrier & tree pits - locations to be checked on site in line with drawings UA001881-701-800/801



05	Planting revised to align with scheme revisions	21-10-15
04	'DRAFT' removed, note added, tree pits added, key revised	29-08-14
03	Drawing updated to CIS layout and WDH comments	14-05-14
02	General Amendments. Issue for planning condition discharge	21-12-12
V	Initial Draft	31-08-12

Status: **PLANNING**

Scales	1:100 @ A1	Current Issue Signatures	
Original Size	A1	Author	A.VICTORY
Height Datum	O.S.	Checker	A.VICTORY
Grid	O.S.	Approver	A.ZORLUTUN
© Copyright reserved			

Filename: JA001881-701-900 SERIES - PLANTING PLAN.DWG

Hyder CONSULTING (UK) Limited
 5th Floor, The Pithay
 All Saints Street
 Bristol, England
 BS1 2NL
 Tel: +44 (0)870 000 3003
 Fax: +44 (0)870 000 3903

Project	Bicester Eco Development	
Title	Planting Plan 11 - Phase 1	
Drawing No.	Project No.	Issue
701-915	UA001881	05

perimeter planting see drawing UA001881-701-929

For all Perimeter Planting see drawing UA001881-701-229
 Perimeter Planting Plan