

### KEY

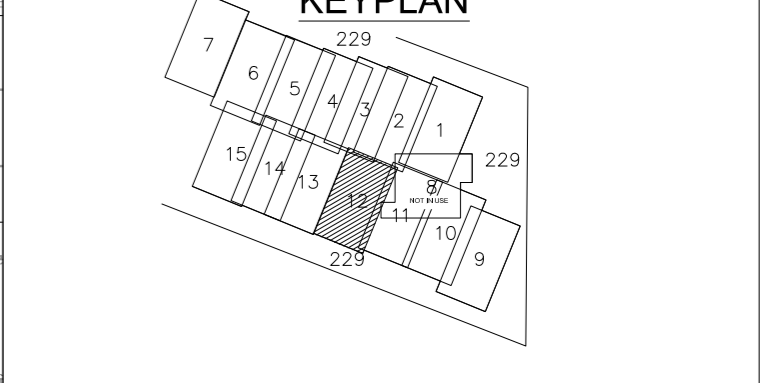
- Existing: Existing tree and hedge
- Proposed: Proposed tree, Proposed hedge
- Amenity grass - Emorsgate EG22 Lawn Mixture - refer to schedule UA001881-701-1103
- Planting area
- EM6 Meadow mix for chalk and limestone soils (Perimeter planting) refer to schedule UA001881-701-1103.
- EH1 Hedgerow mix (shade tolerant) refer to schedule UA001881-701-1103.
- Proposed tree grille - refer to drg no. UA001881-701-800
- Proposed tree pit. Root barrier = blue line. Refer to drg no. UA001881-701-800/801
- Green Roofs - refer to drg no. UA001880-701-933
- SUDS - refer to drg no. UA001881-701-811
- Exemplar boundary line
- Adoption boundary line
- Perimeter planting extents
- Light column

#### Community Street 5 - Species List

Plant type	Common name	Reference
<b>COMMUNITY ST 5</b>		
<b>Non edible Shrubs</b>		
<i>Cornus sanguinea</i>	Dogwood	COR SAN
<i>Mahonia nervosa</i>	Dwarf Oregon grape	MAH NER
<i>Cornus stolonifera</i>	Kelsey's dwarf Dogwood	COR STO
<b>Climbers</b>		
<i>Actinidia arguta</i> MALE AND FEMALE	Hardy kiwi	ACT ARG
<i>Vitis vinifera</i> 'Fortana'	Green grape	VIT VIN
<b>Edible shrub</b>		
<i>Rosa Rugosa</i>	Ramans Rose	ROS RUG
<i>Laurus nobilis</i>	Bay	LAU NOB
<b>Herbs</b>		
<i>Fragaria vesca</i>	Wild strawberry	FRA VES
<i>Lavendula augustifolia</i>	Lavender	LAV AUG
<i>Rosmarinus officinalis</i>	Rosemary	ROS OFF
<i>Origanum vulgare</i>	Oregano	ORI VUL
<i>Salvia officinalis</i>	Sage	SAL OFF
<b>Herbaceous/Perennial</b>		
<i>Heuchera Palace purple</i>	Heuchera	HEU PAL
<i>Liorope muscari</i>	Big Blue Lily turf	LIO MUS
<i>Geranium sylvaticum</i>	Mayflower	GER SYL
<i>Lamium maculatum</i>	Spotted dead nettle	LAM MAC
<b>Ground Cover</b>		
<i>Bergenia cordifolia</i>	Bergenia	BER COR

Tree Species*	Common name	Reference
<i>Acer campestre</i> 'Streetwise'	Field Maple	ACE CAM Streetwise
<i>Corylus avellana</i>	Common Hazel	COR AVE
<i>Carpinus betulus</i> Fastigiata 'Franz Fontaine'	Fastigate Hornbeam	CAR BET FF
<i>Prunus 'Sunburst'</i>	Cherry	PRU SUN
<i>Sorbus aria</i>	Common Whitebeam	SOR ARI

For detailed Plant Schedule, refer to:  
 UA001881-701-1102 Infrastructure Planting Schedule  
 UA001881-701-1103 Phase 1 Planting Schedule  
 For Topsoiling plans, refer to: UA001881-701-114 to 116  
 Tree locations and planting areas layout by ICS.  
 Root barrier & tree pits - locations to be checked on site in line with drawings UA001881-701-800/801



Issue Description	Date
05 Planting revised to align with scheme revisions & revisions to root barriers	21-10-15
04 Minor Amendment, 'DRAFT' removed, TP's & note added	29-08-14
03 Drawing updated to GIS layout and WH comments	14-05-14
02 General Amendments, issue for planning condition discharge	21-12-12
V Initial Draft	31-08-12

Status		PLANNING	
Scales	1:100 @ A1	Current Issue Signatures	
Original Size	A1	Author	A.VICTORY
Height Datum	O.S.	Checker	A.VICTORY
Grid	O.S.	Approver	A.ZORLUTUN
© Copyright reserved			

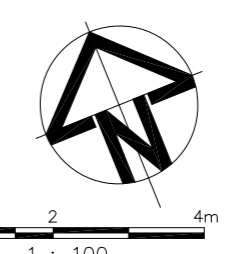
Client: **azdominion**

HYDER CONSULTING (UK) Limited  
 5th Floor, The Pithay  
 All Saints Street  
 Bristol, England  
 BS1 2NL  
 Tel: +44 (0)870 000 3003  
 Fax: +44 (0)870 000 3903

Project: Bicester Eco Development

Title: Planting Plan 12 - Phase 1  
 Community Street 5 & Junction

Drawing No.	Project No.	Issue
701-916	UA001881	05



1:100