

KEY

Existing

- Existing tree and hedge

Proposed

- Proposed tree
- Proposed hedge
- Amenity grass - Emorsgate EG22 Lawn Mixture - refer to schedule UA001881-701-1103
- Planting area
- EM6 Meadow mix for chalk and limestone soils (Perimeter planting) refer to schedule UA001881-701-1103.
- EH1 Hedgerow mix (shade tolerant) refer to schedule UA001881-701-1103.
- Proposed tree grille - refer to drg no. UA001881-701-800
- Proposed tree pit. Root barrier = blue line. Refer to drg no. UA001881-701-800/801
- Green Roofs - refer to drg no. UA001880-701-933
- SUDS - refer to drg no. UA001881-701-811
- Exemplar boundary line
- Adoption boundary line
- Perimeter planting extents
- Light column
- Root Protection Barriers as per specification; located as indicated, to be min 600mm depth adjacent to boundaries, kerbs & surfaces, min 1.0m depth adjacent to buildings.

Planting Plan 1 - Species List

Planting Plan 1

Plant Species	Common name	Reference
Bergine cordifolia	Bergine	BER COR
Liriope muscari	Big Blue Lily turf	LIR MUS
Pachysandra terminalis	Japanese spurge	PAC TER

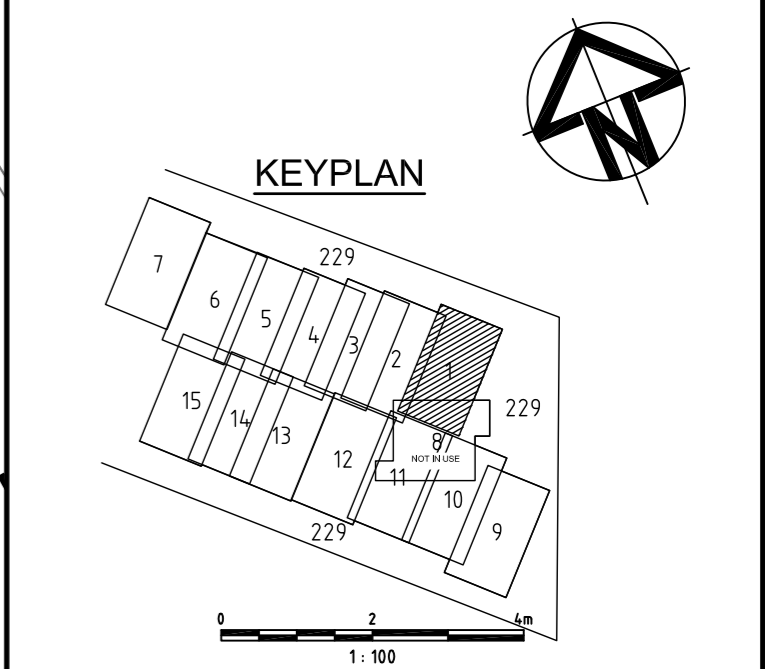
Planting Plan 1

Tree Species*	Common name	Reference
Carpinus Betulus	Hornbeam	CAR BET
Liquidambar styraciflua	Sweet Gum	LIQ STY
Ilex aquifolium	Holly	ILE AQU

*Where a tree species is specified in both standard and extra heavy standard size, an affix of 'S' denotes standard size

For detailed Plant Schedule, refer to:
 UA001881-701-1102 Infrastructure Planting Schedule
 UA001881-701-1103 Phase 1 Planting Schedule
 For Topsoiling plans, refer to: UA001881-701-114 to 116

Tree locations and planting areas layout by ICS.
 Root barrier & tree pits - locations to be checked on site in line with drawings UA001881-701-800/801



06	Planting revised following CDC comments and discussion	11-03-16
05	Planting revised to align with scheme revisions & root barrier revs	21-10-15
04	'DRAFT' removed, note added, tree pits added, Primary road 02-09-14 planting annotated as Infrastructure phase, key & hatches re grass	
03	Drawing updated to CIS layout and WDH comments	14-05-14
02	General Amendments, Issue for planning condition discharge	21-12-12
V	Initial Draft	31-08-12
Issue	Description	Date

PLANNING

Scale	1:100 @ A1	Current Issue Signatures
Original Size	A1	Author: R. BouSaleh
Height Datum	0.S.	Checker: B. Pope
Grid	0.S.	Approver: A.ZORLUTUNA
© Copyright reserved		

Filename: UA001881-701-900 SERIES - PLANTING PLAN (ADJUSTED) 03.08.16



Hyder HYDER CONSULTING (UK) Limited
 5th Floor, The Pithay
 All Saints Street
 Bristol, England
 BS1 2NL
 Tel: +44 (0)870 000 3003
 Fax: +44 (0)870 000 3903

Project: **Bicester Eco Development**

Title: **Planting Plan 1 Phase 1**

Drawing No.	Project No.	Issue
701-905	UA001881	06

MATCH LINE FOR CONTINUATION SEE DWG 701-906

MATCH LINE FOR CONTINUATION SEE DWG 701-915