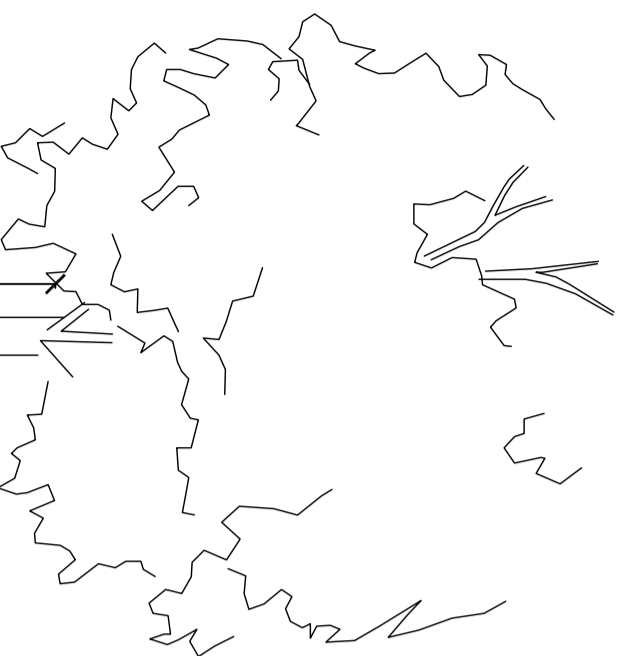
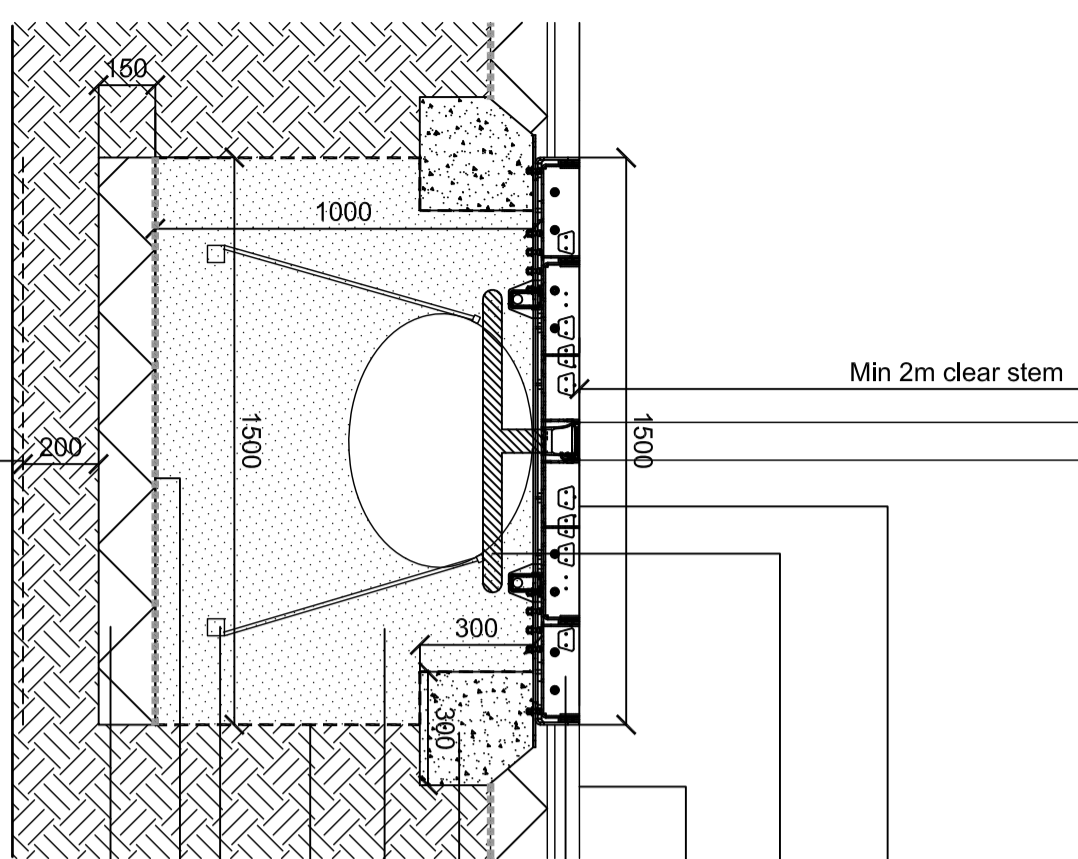


Isometric View
1500mm Castile tree grille
Single tray (or similar approved)

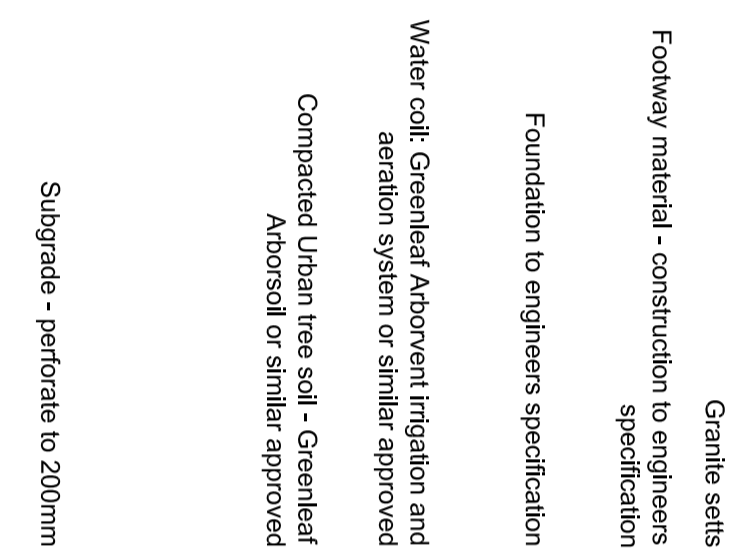


Trees species / specification as
planting schedule



Notes:
All trees planted within 3000mm from
underground services, kerbs or
infiltration blankets should include root
barriers as indicated

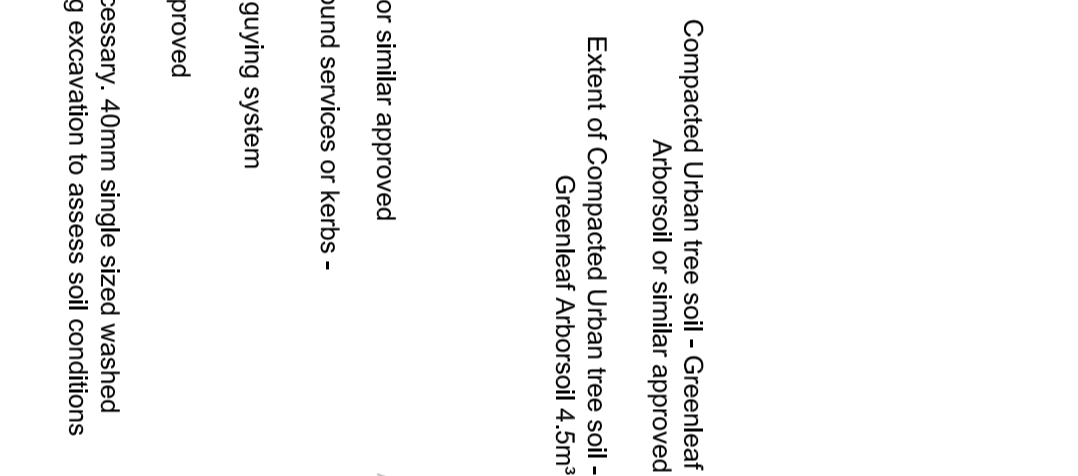
For all tree pit locations/positions refer to
General Arrangement drawings



Trees species / specification as
planting schedule

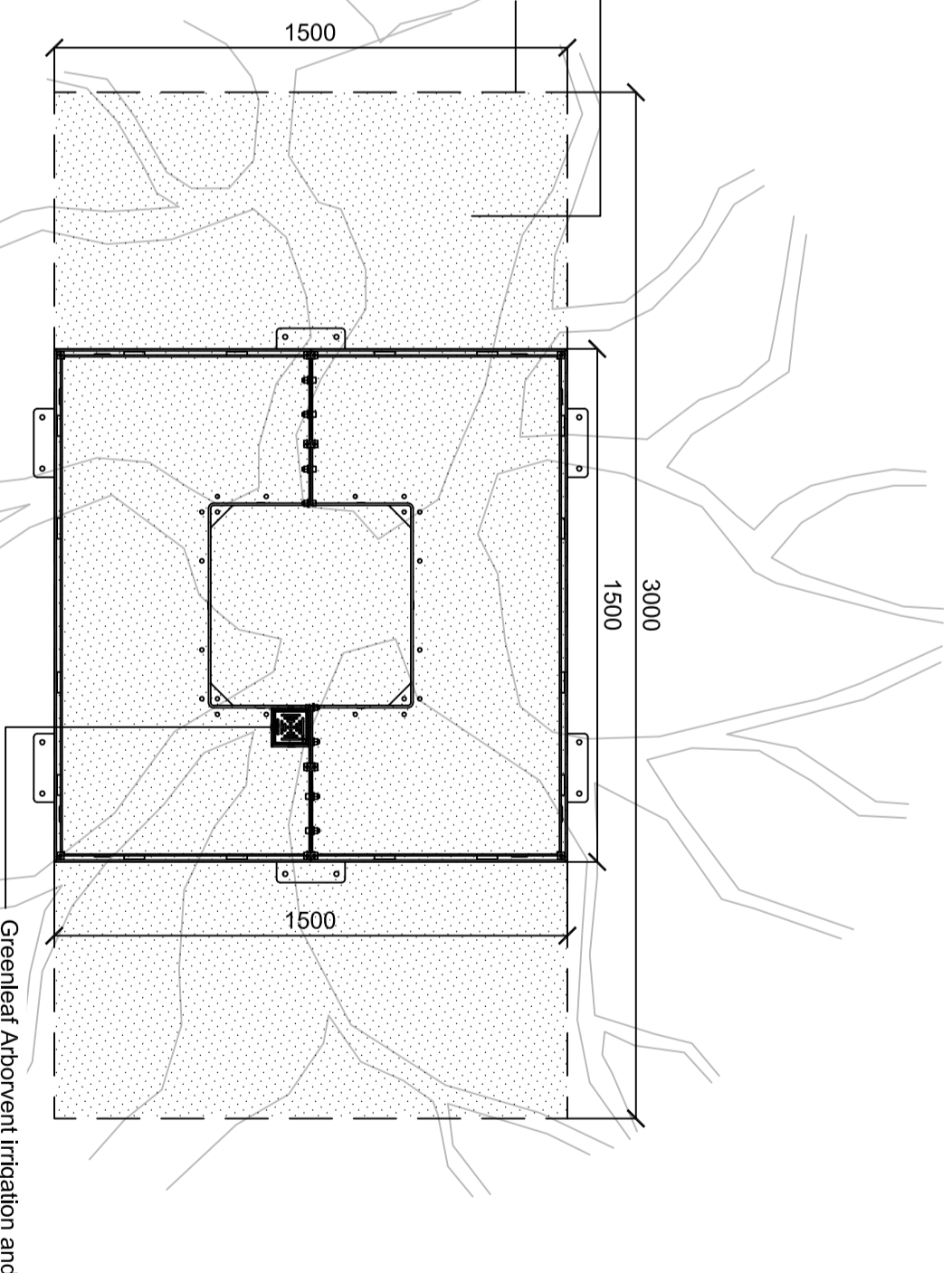
Bedrock approx 1200 to 1750mm deep

TP-H-B Tree pit detail: Recycled Glass aggregate resin bound paving



TP-H-A Tree pit detail: Primary Road - Castile tree grille (or similar approved)

TP-H-A Plan View
1500mm Greenleaf Castile recessed
tree grille (Single tray) - Galvanised
Paving Infill to match footway material



Loose recycled 6mm glass chippings (colour to
match resin bound gravel) within collar

Steel tree collar edge restraint

Sureset resin bound recycled glass (6mm)
aggregate paving or similar approved

Geotextile membrane - Terram 1000 or similar
approved

150mm lightly compacted sub-base - No fines

Tensor Geogrid or similar approved to
engineers specification

Root Barrier if tree pit within 3000mm of
underground services or kerbs - Greenleaf
Reroot 1000 or similar approved

Underground Guying - Greenleaf Aborogy
Tree guying system or similar approved

Geotextile membrane - Terram 1000 or similar
approved

150mm clear washed stone to be included as
necessary. 40mm single sized washed stone.
no fines - each pit to be inspected following
excavation to assess soil conditions and need
for drainage layer.



Tree Pit Details
1 : 20

Type: Greenleaf Castile Tree Grille (Single tray)

Material: Segments, Mild steel

Frame: Galvanized mild steel

Fixings: Stainless steel

Finish: Segments and Frame -
Galvanized to BS EN 146 1999

Colour: Galvanized

Type: Sureset Tree Outline

Material: Unfinished carbon steel

Infill: Sureset glass aggregate resin bound paving

All Construction to Manufacturers' recommendations

All supplier details are or similar approved

For details of pit locations see drawings UA001881-701-114 to
116

06 Annotation updated
granite setts added

16-08-2013

05 Annotation amendment

31-01-2013

04 Annotation amendment

11-01-13

03 Foundation to free hoop altered

14-12-12

02 Or similar approve added to named
products
Additional detail added

01-10-12

01 DRAFT

06-09-12

Issue Description Date

Status

PLANNING
NOT FOR CONSTRUCTION

Scales

1:20

Current Issue Signatures

Author
B.CONNOLLEY

Checker
A.VICTORY

Approver
R.KITCH

Original Size
A2

Height
DATUM

Datum
R.KITCH

Grid
GRID

Copyright reserved

Filename
UA001881-701-800 TREE PIT DETAILS - HARD DWG

Client

azdominion

HYDER CONSULTING (UK) Limited

5th Floor, The Pithay

All Saints Street

Bristol, England

BS1 2NL

Tel: +44 (0)870 000 3903

Fax: +44 (0)870 000 3903

Project

Bicester Eco
Development

Title

Tree Pit Details
Castile Grille / Sureset

Drawing No.

Project No.

Issue

701-800 — UA001881 — 06