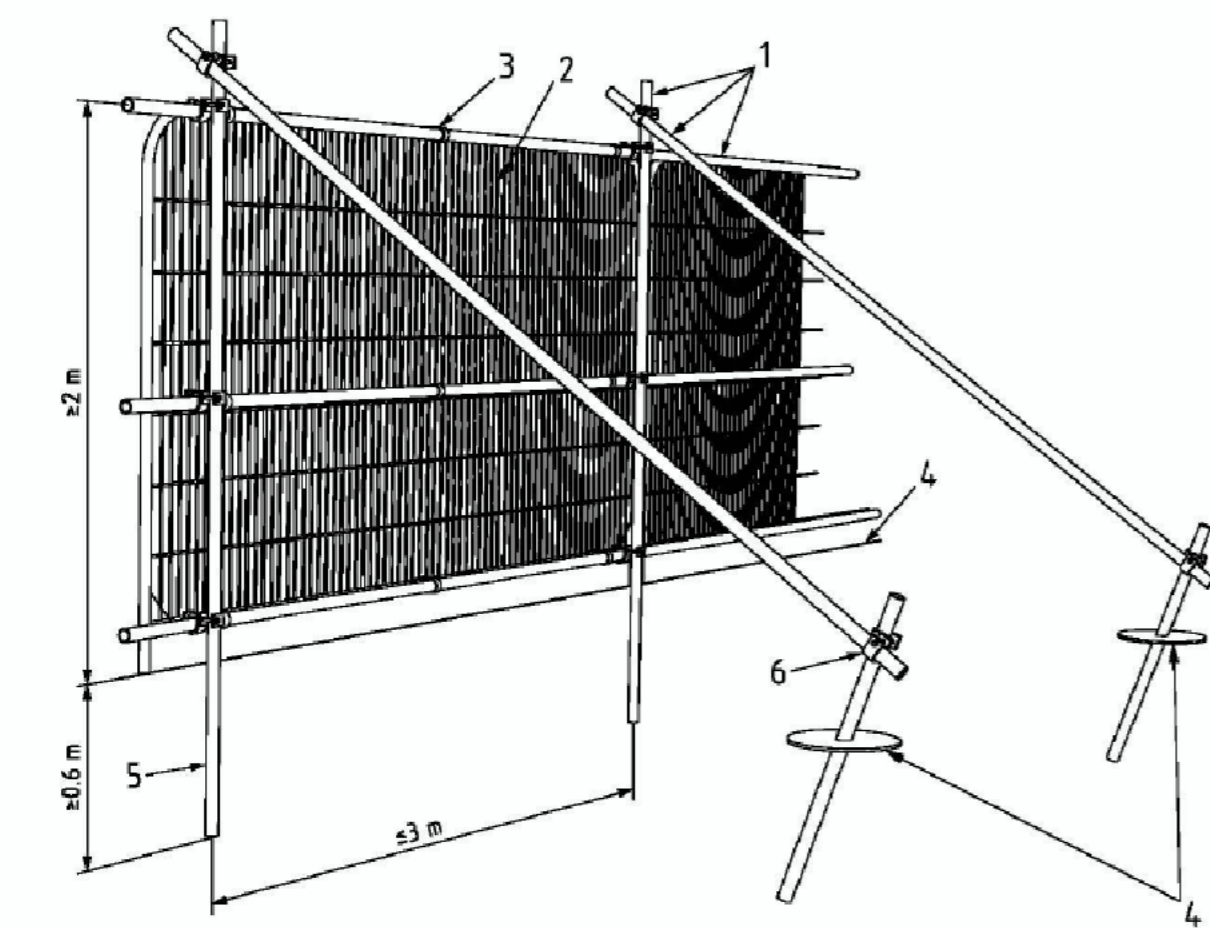


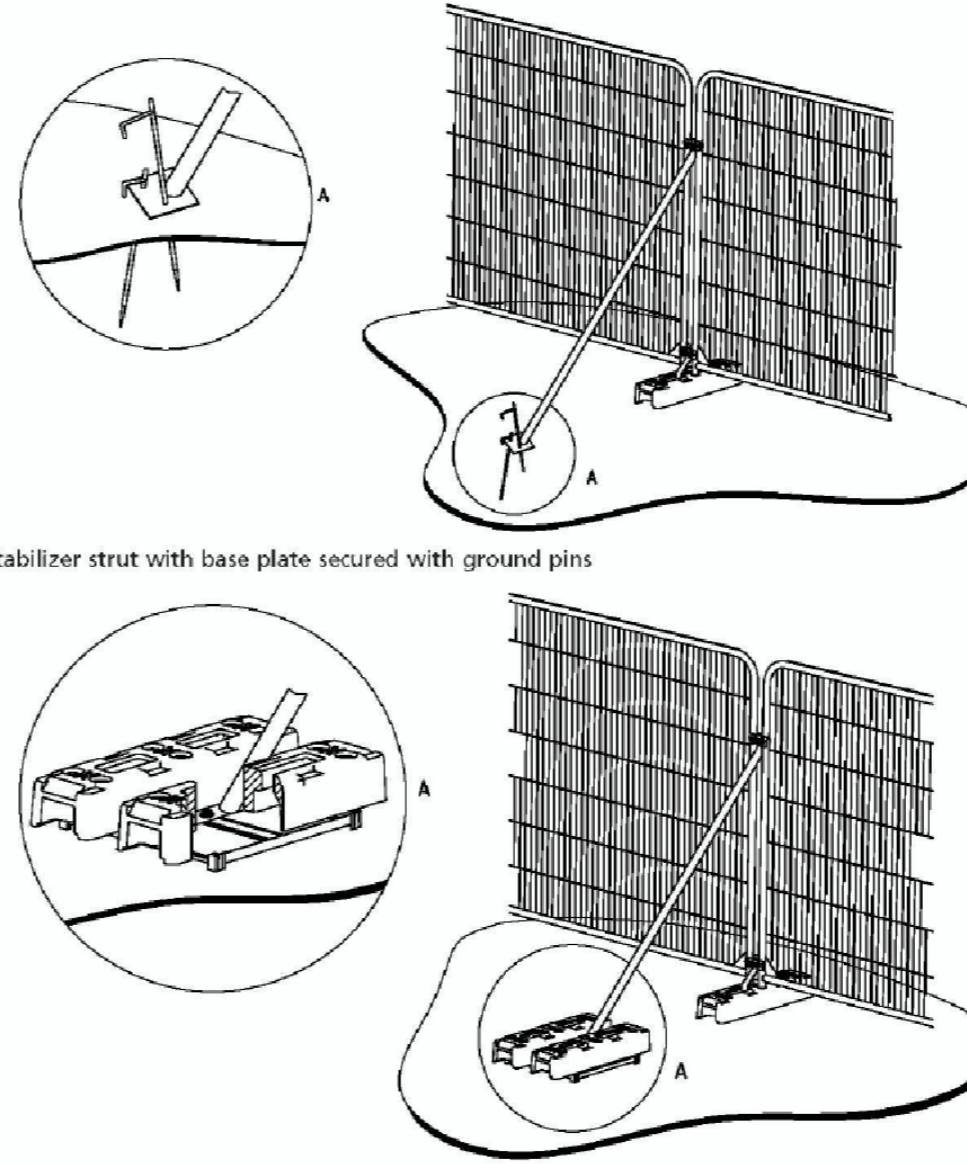
Tree Protection Fencing Specification (High Use Areas)



- Key**
- 1 Standard scaffold poles
 - 2 Heavy gauge 2 m tall galvanized tube and welded mesh infill panels
 - 3 Panels secured to uprights and cross-members with wire ties
 - 4 Ground level
 - 5 Uprights driven into the ground until secure (minimum depth 0.6 m)
 - 6 Standard scaffold clamps

Figure 2. Tree Protection Fencing Specification (extract from BS5837)

Tree Protection Fencing Specification (Low Use Areas)



a) Stabilizer strut with base plate secured with ground pins

b) Stabilizer strut mounted on block tray

Figure 3. Tree Protection fencing example

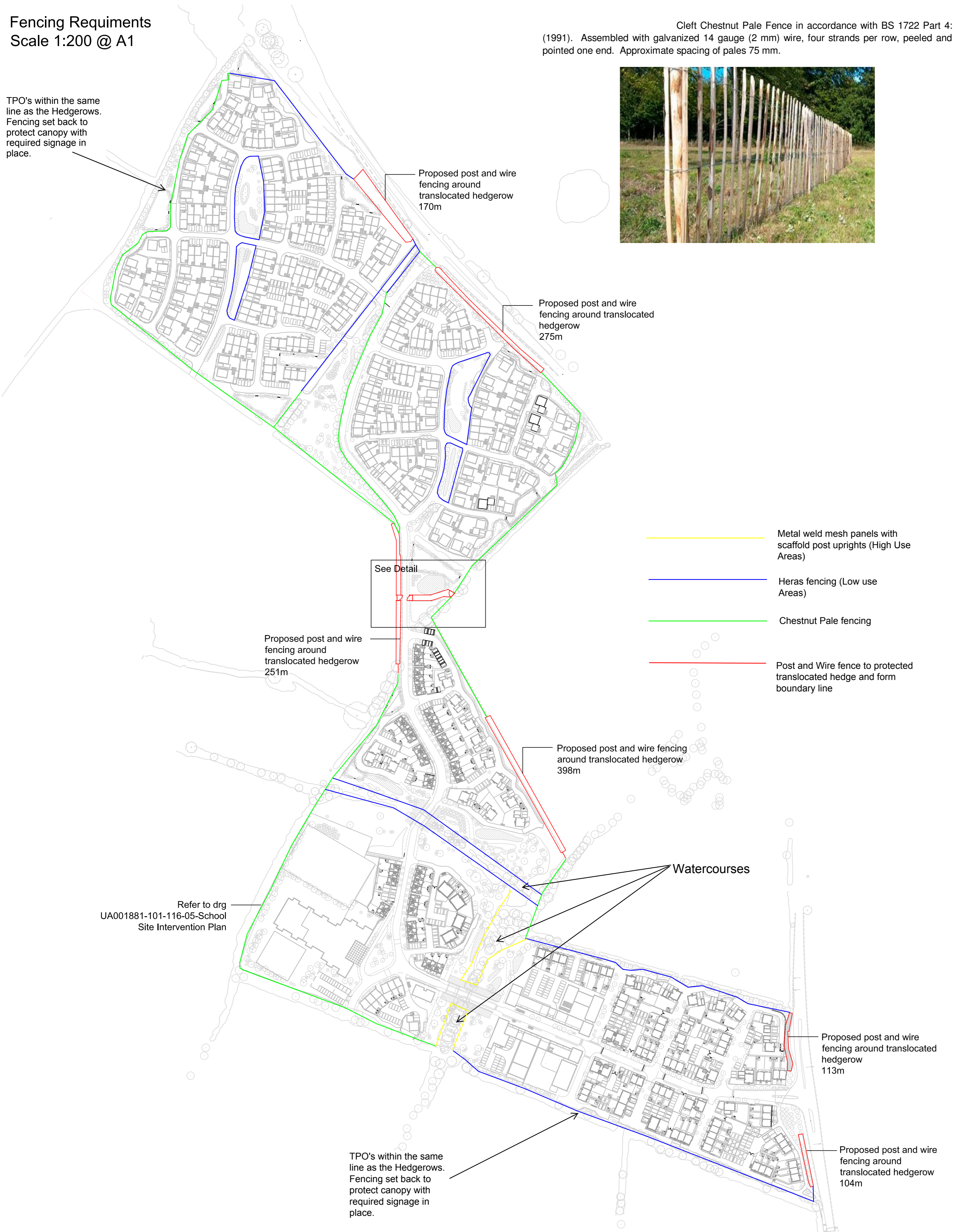
Notes:

This plan is to be read in conjunction with the Construction Environmental Management Plan

Fencing Requirments
Scale 1:200 @ A1

TPO's within the same line as the Hedgerows. Fencing set back to protect canopy with required signage in place.

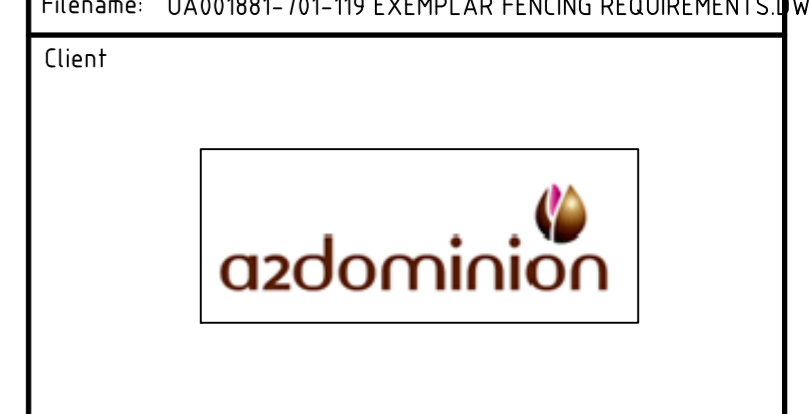
Cleft Chestnut Pale Fence in accordance with BS 1722 Part 4: (1991). Assembled with galvanized 14 gauge (2 mm) wire, four strands per row, peeled and pointed one end. Approximate spacing of pales 75 mm.



Refer to drg UA001881-101-116-05-School Site Intervention Plan

TPO's within the same line as the Hedgerows. Fencing set back to protect canopy with required signage in place.

Issue	Description	Date
DRAFT NOT TO BE USED FOR CONSTRUCTION		
Scates	1:100 @ A1	Current Issue Signatures
Original Size	A1	Author B.CONNOLLEY
Height Datum	O.S.	Checker A.VICTORY
Grid	O.S.	Approver A.ZORLUTUNA
© Copyright reserved		



Hyder HYDER CONSULTING (UK) Limited
5th Floor, The Pithay
All Saints Street
Bristol, England
BS1 2NL
Tel: +44 (0)870 000 3003
Fax: +44 (0)870 000 3903

Project
Bicester Southfields Eco Development

Title
Exemplar Fencing Requirements

WDH Sketch: Extent of Protective Fencing
Date: 18.06.13