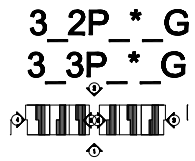
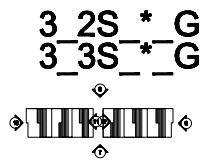


## 5.14 Appearance: Housing Design and Architectural Language

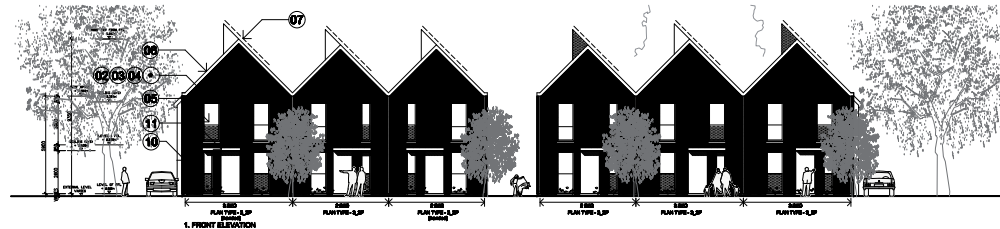


Refer to drawing  
No: BIMP2\_PA\_05\_030  
for typical plan layout



### LEGEND

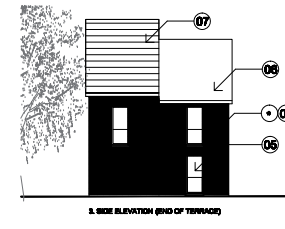
- 01 STONE
- 02 BRICK
- 03 TIMBER
- 04 TEXTURE RENDER
- 05 TRIPLE GLAZED WINDOWS (timber frame)
- 06 SLATE ROOF TILE
- 07 PV CELLS (to south facing roof)
- 08 CONCRETE FEATURE BAND
- 09 STUCCO RENDER PLINTH
- 10 DOWN PIPE
- 11 CANOPY
- 12 VARIABLE MATERIAL (SEE MATERIALS KEY PLAN)



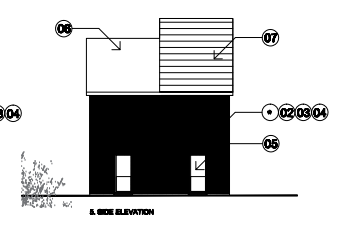
TYPE 3: 2/3 BED PRIVATE TERRACE



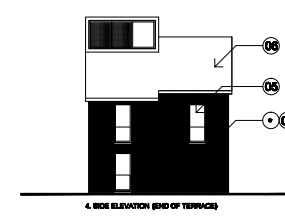
2. REAR ELEVATION



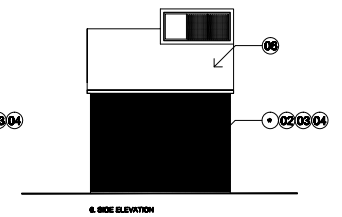
3. SIDE ELEVATION (END OF TERRACE)



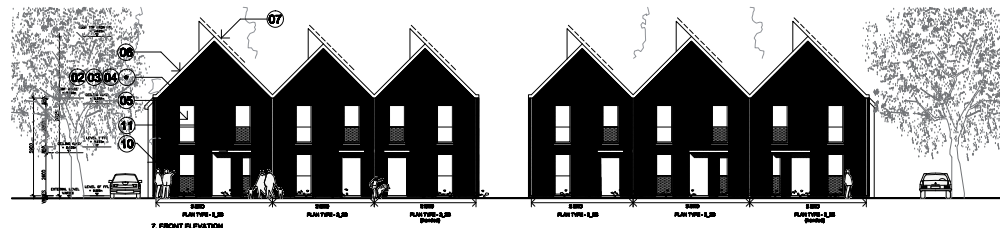
4. SIDE ELEVATION



5. SIDE ELEVATION (END OF TERRACE)



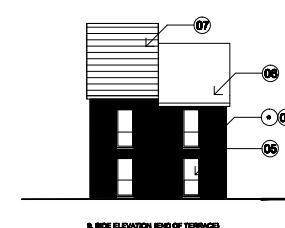
6. SIDE ELEVATION



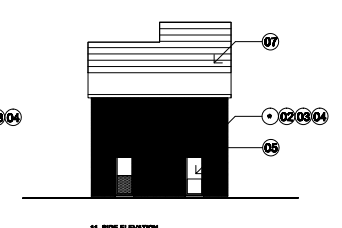
TYPE 3: 2/3 BED SOCIAL TERRACE



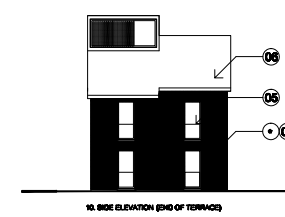
8. REAR ELEVATION



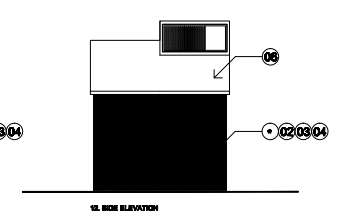
9. SIDE ELEVATION (END OF TERRACE)



10. SIDE ELEVATION



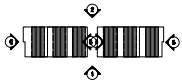
11. SIDE ELEVATION (END OF TERRACE)



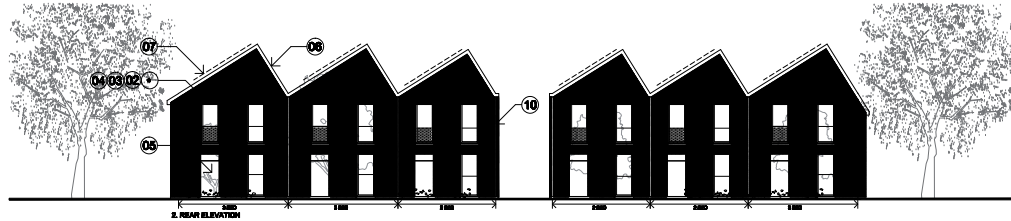
12. SIDE ELEVATION

## 5.14 Appearance: Housing Design and Architectural Language

3 2P \* G2  
3 3P \* G2



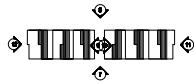
TYPE 3: 2/3 BED PRIVATE TERRACE



2. REAR ELEVATION

Refer to drawing  
No: BIMP2\_PA\_05\_030  
for typical plan layout

3 2S \* G2  
3 3S \* G2



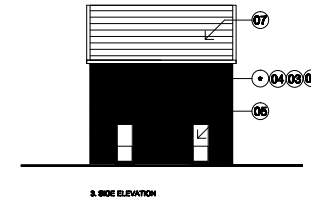
7. FRONT ELEVATION



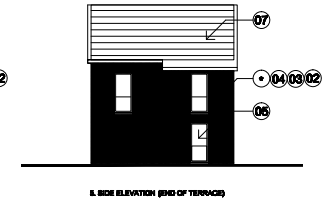
8. REAR ELEVATION

### LEGEND

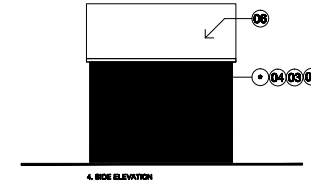
- 01 STONE
- 02 BRICK
- 03 TIMBER
- 04 TEXTURE RENDER
- 05 TRIPLE GLAZED WINDOWS (timber frame)
- 06 SLATE ROOF TILE
- 07 PV CELLS (to south facing roof)
- 08 CONCRETE FEATURE BAND
- 09 STUCCO RENDER PLINTH
- 10 DOWN PIPE
- 11 CANOPY
- VARIABLE MATERIAL



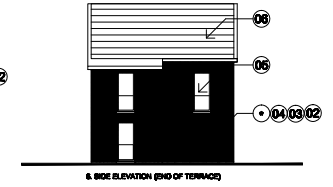
3. SIDE ELEVATION



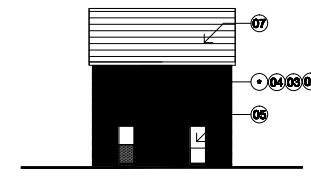
4. SIDE ELEVATION (END OF TERRACE)



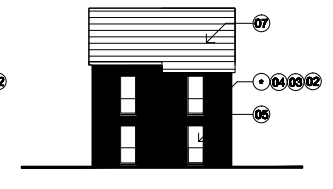
5. SIDE ELEVATION



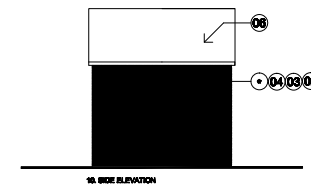
6. SIDE ELEVATION (END OF TERRACE)



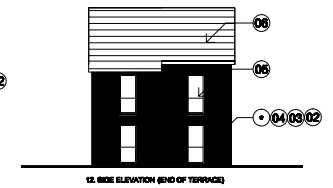
9. SIDE ELEVATION



10. SIDE ELEVATION (END OF TERRACE)



11. SIDE ELEVATION



12. SIDE ELEVATION (END OF TERRACE)

## 5.14 Appearance: Housing Design and Architectural Language

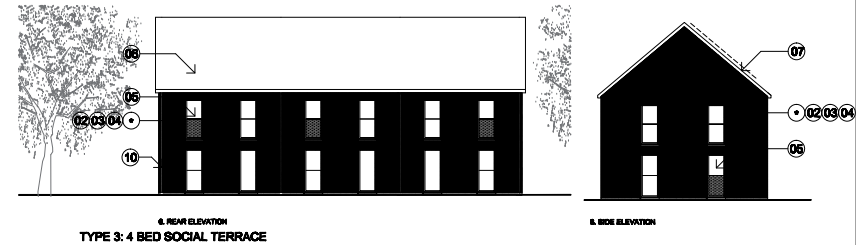
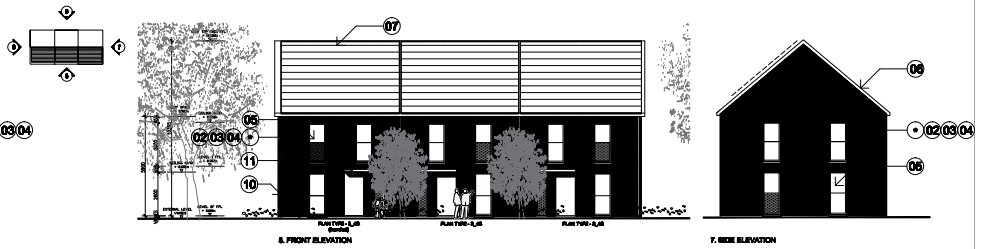
### 3\_4S\*\_G



Refer to drawing  
No: BIMP2\_PA\_05\_030  
for typical plan layout



### 3\_4S\*\_L

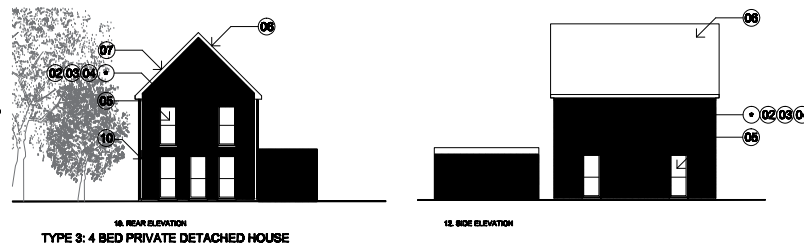


### 3\_4P\*\_G

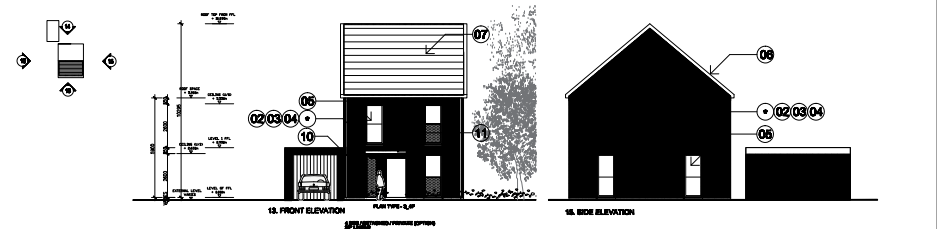


#### LEGEND

- 01 STONE
- 02 BRICK
- 03 TIMBER
- 04 TEXTURE RENDER
- 05 TRIPLE GLAZED WINDOWS (timber frame)
- 06 SLATE ROOF TILE
- 07 PV CELLS (to south facing roof)
- 08 CONCRETE FEATURE BAND
- 09 STUCCO RENDER PLINTH
- 10 DOWN PIPE
- 11 CANOPY
- VARIABLE MATERIAL (SEE MATERIALS KEY PLAN)

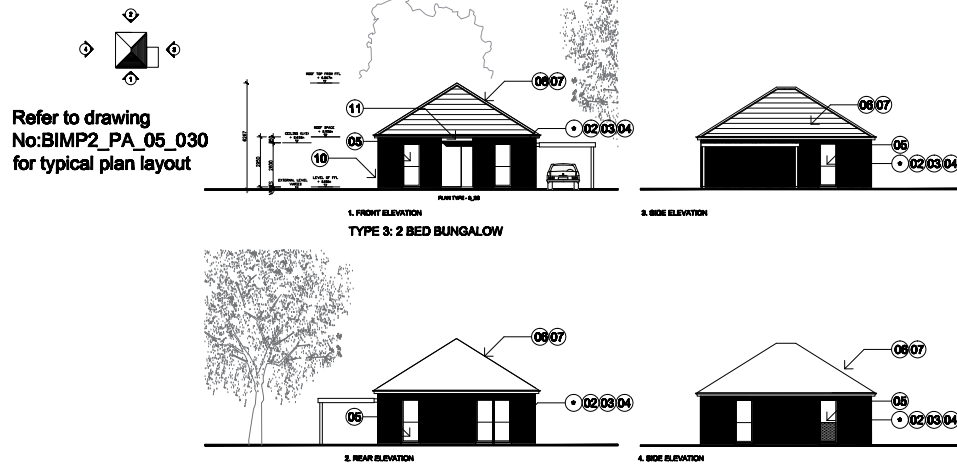


### 3\_4P\*\_L



## 5.14 Appearance: Housing Design and Architectural Language

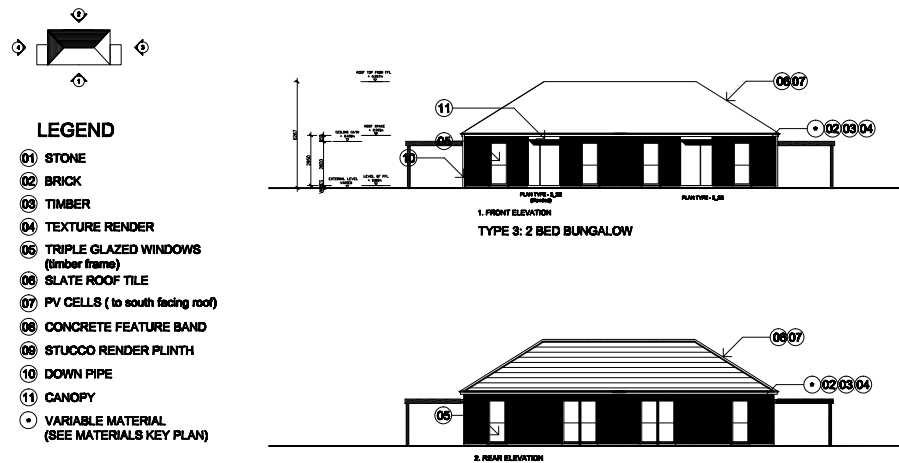
### 3\_2B\*\_H



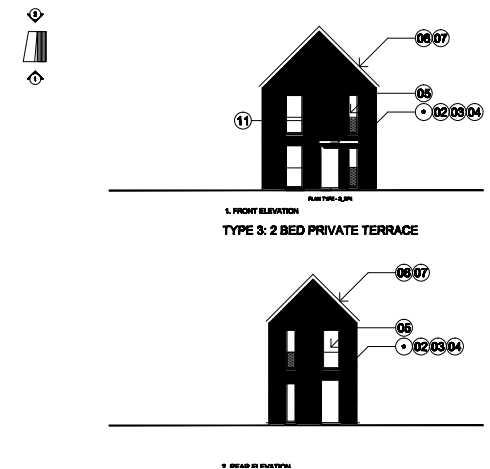
### 3\_3B\*\_H



### 3\_2B\*\_H2

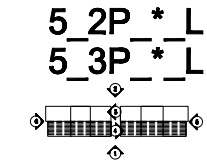


### 3\_2P\*\_KG





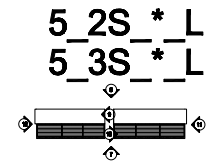
## 5.14 Appearance: Housing Design and Architectural Language



Refer to drawing No:  
BIMP2\_PA\_05\_050  
for typical plan layout



TYPE 5: 2 & 3 BED PRIVATE TERRACE



### LEGEND

- 01 STONE
- 02 BRICK
- 03 TIMBER
- 04 TEXTURE RENDER
- 05 TRIPLE GLAZED WINDOWS (timber frame)
- 06 SLATE ROOF TILE
- 07 PV CELLS (to south facing roof)
- 08 CONCRETE FEATURE BAND
- 09 STUCCO RENDER PLINTH
- 10 DOWN PIPE
- 11 CANOPY
- VARIABLE MATERIAL (SEE MATERIALS KEY PLAN)



TYPE 5: 2 & 3 BED SOCIAL TERRACE

