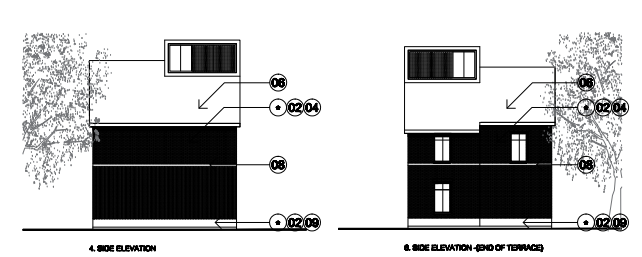
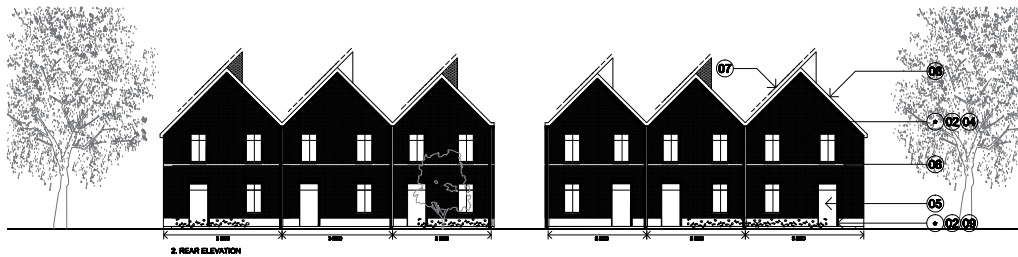
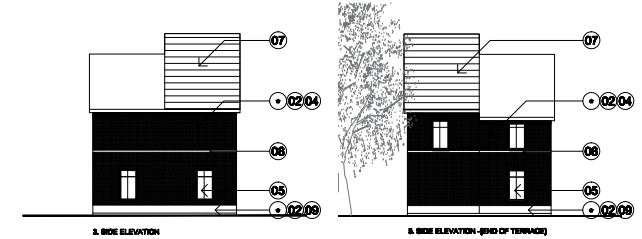
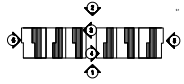


5.14 Appearance: Housing Design and Architectural Language

5_2P_*_G
5_3P_*_G



Refer to drawing No:
BIMP2_PA_05_050
for typical plan layout

TYPE 5: 2 & 3 BED PRIVATE TERRACE

LEGEND

- 01 STONE
- 02 BRICK
- 03 TIMBER
- 04 TEXTURE RENDER
- 05 TRIPLE GLAZED WINDOWS (timber frame)
- 06 SLATE ROOF TILE
- 07 PV CELLS (to south facing roof)
- 08 CONCRETE FEATURE BAND
- 09 STUCCO RENDER PLINTH
- 10 DOWN PIPE
- 11 CANOPY
- VARIABLE MATERIAL (SEE MATERIALS KEY PLAN)

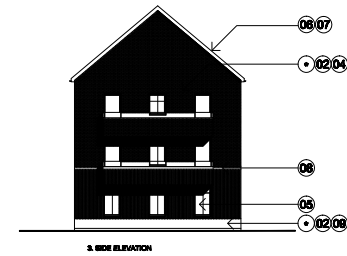
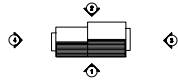
5.14 Appearance: Housing Design and Architectural Language

Refer to drawing No:
BIMP2_PA_05_050
for typical plan layout

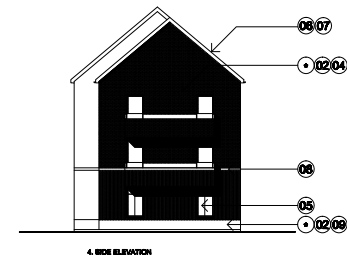
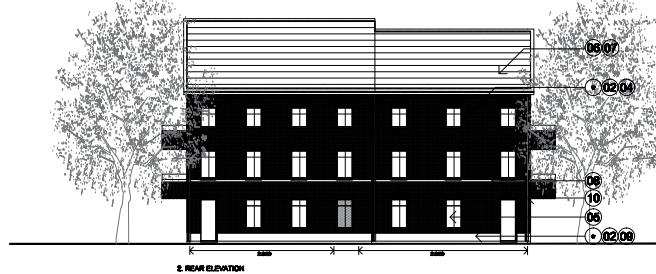


5.14 Appearance: Housing Design and Architectural Language

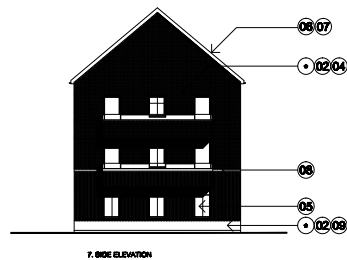
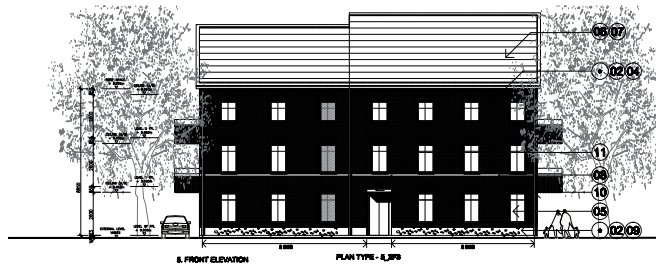
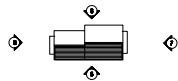
5_2F2*_L



Refer to drawing No:
BIMP2_PA_05_051
for typical plan layout

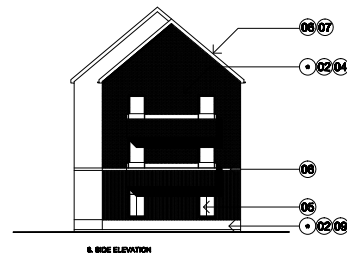
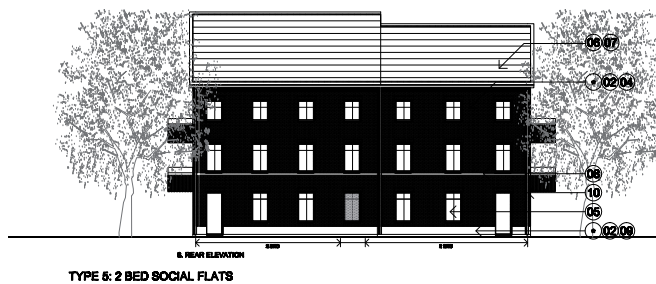


5_2F3*_L



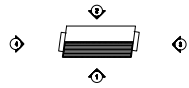
LEGEND

- 01 STONE
- 02 BRICK
- 03 TIMBER
- 04 TEXTURE RENDER
- 05 TRIPLE GLAZED WINDOWS (timber frame)
- 06 SLATE ROOF TILE
- 07 PV CELLS (to south facing roof)
- 08 CONCRETE FEATURE BAND
- 09 STUCCO RENDER PLINTH
- 10 DOWN PIPE
- 11 CANOPY
- VARIABLE MATERIAL (SEE MATERIALS KEY PLAN)

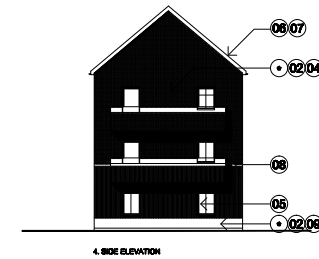
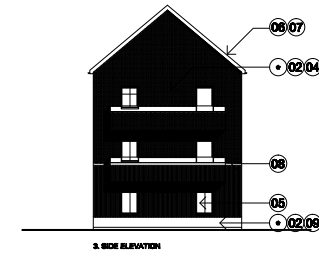
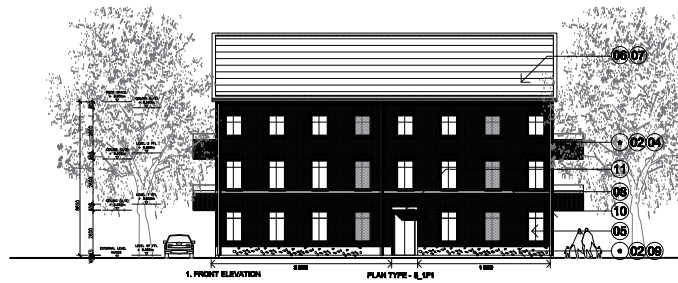


5.14 Appearance: Housing Design and Architectural Language

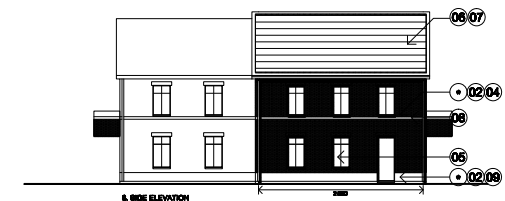
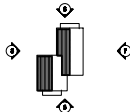
5_1F1_*_L
5_2F1_*_L



Refer to drawing No:
BIMP2_PA_05_051
for typical plan layout



5_1F4_*_L
5_2F4_*_L

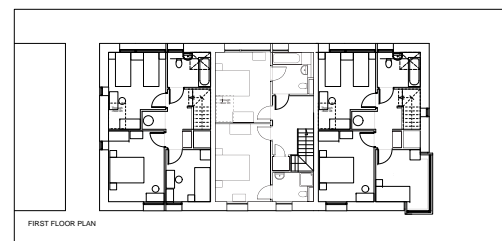
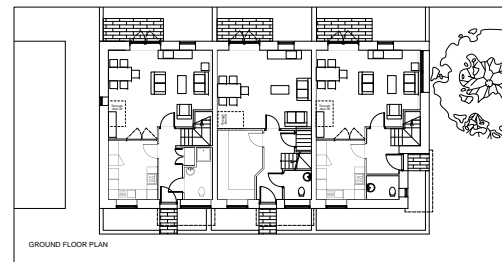
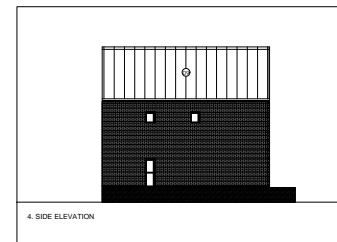
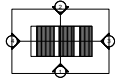


LEGEND

- 01) STONE
- 02) BRICK
- 03) TIMBER
- 04) TEXTURE RENDER
- 05) TRIPLE GLAZED WINDOWS (timber frame)
- 06) SLATE ROOF TILE
- 07) PV CELLS (to south facing roof)
- 08) CONCRETE FEATURE BAND
- 09) STUCCO RENDER PLINTH
- 10) DOWN PIPE
- 11) CANOPY
- VARIABLE MATERIAL (SEE MATERIAL SCHEDULE IN ANN)

5.14 Appearance: Housing Design and Architectural Language

E2_2/3P_B_G



LEGEND

- ① STONE
- ② BRICKWORK
dark leaf colour
- ③ BRICKWORK
light leaf colour
- ④ HORIZONTAL TIMBER BOARDING
- ⑤ VERTICAL TIMBER BOARDING
- ⑥ RENDER
- ⑦ PV CELLS
- ⑧ COMPOSITE WINDOW
water finish powder coated metal, with head and sill to match
- ⑨ STANDING SEAM ZINC ROOF
with powder coated metal gutters and rainwater pipes
- ⑩ ROOF VENT
- ⑪ METAL CLAD ENTRANCE COVER