

DETAIL 1 - Parapet

PPC pressed metal capping - [colour RAL 7015 Grey]
 Thermowood timber cladding on 38x38 treated s/w battens

Triple glazed uPVC window [colour: RAL 7015 Grey]
 PPC pressed metal cill sections - [colour, RAL 7015 Grey]

DETAIL 2 - Timber Cladding Cills

Thermowood timber cladding on 38x38 treated s/w battens
 PPC pressed metal head flashing [colour - RAL 7015 Grey]
 21mm Thermowood timber head and jamb linings

DETAIL 3 - Timber Cladding Window Heads

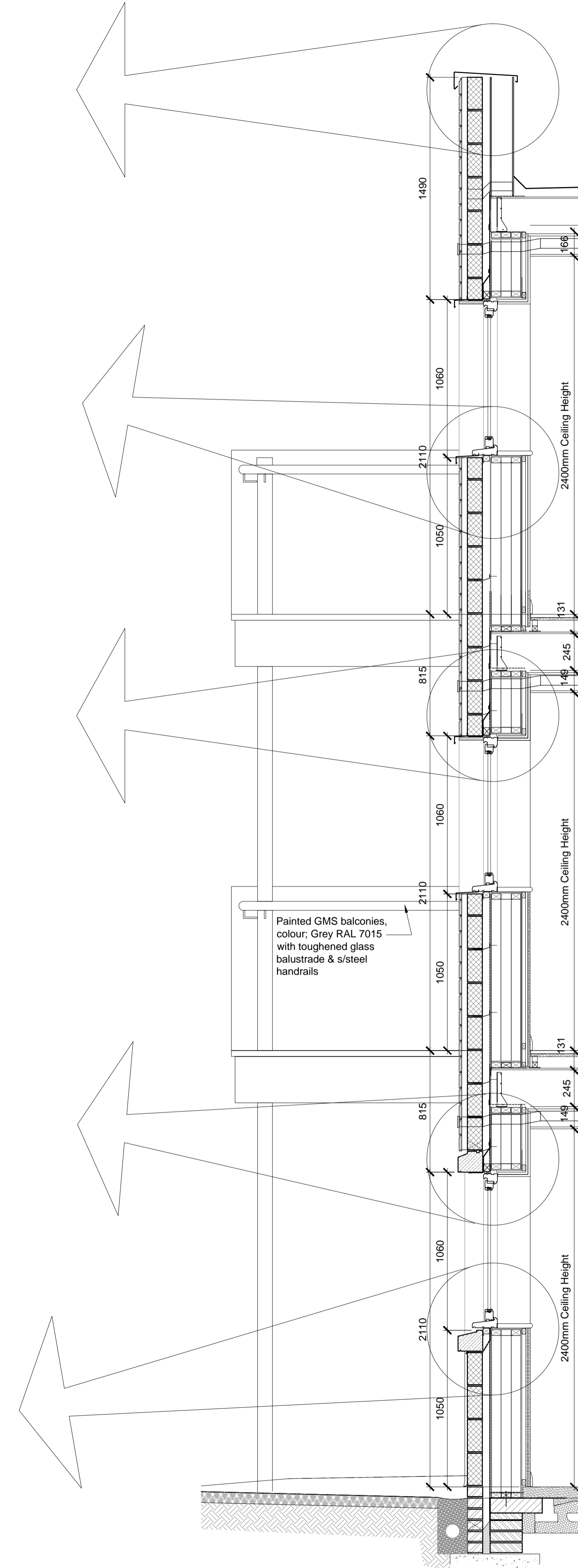
Thermowood timber cladding on 38x38 treated s/w battens
 Reconstituted stone string course [colour: 'Oolite']

DETAIL 4 - Stone String Course / Window Head

Rendered window jambs
 Reconstituted stone cill section [colour: 'Oolite']
 Through colour render - Colour, Ivory

DETAIL 5 - Stone Cills in Render

Scale 1:10



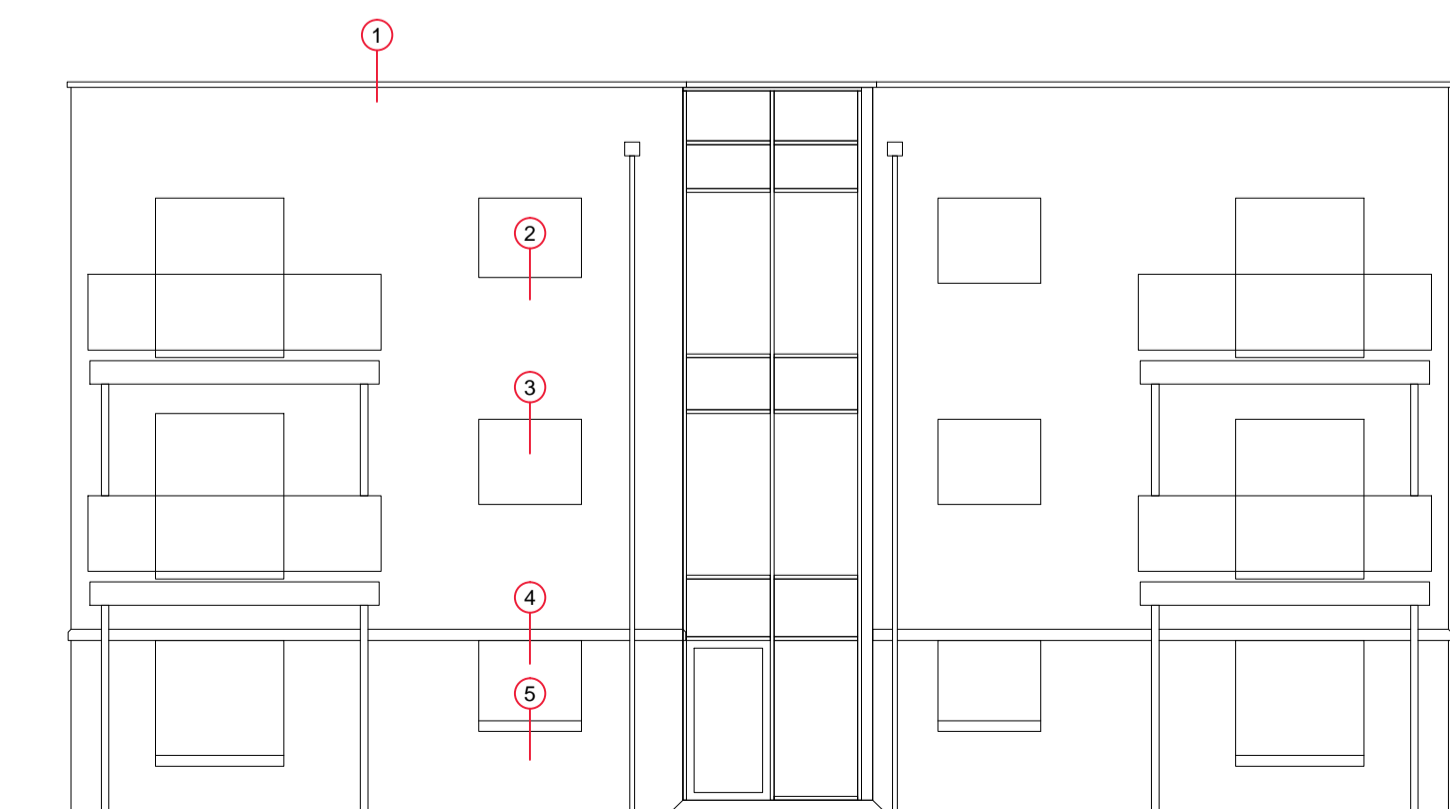
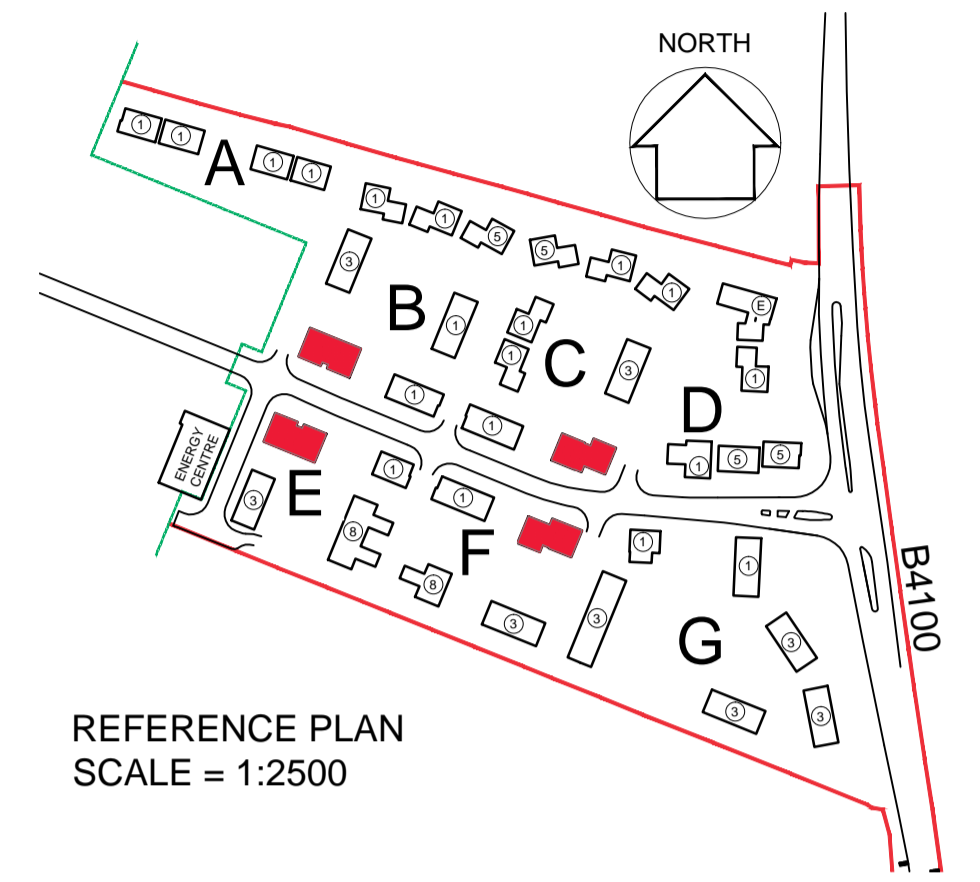
Scale 1:20

notes

- The contractor is responsible for checking dimensions, tolerances and references. Any discrepancy to be verified with the Architect before proceeding with the works.
- Where an item is covered by drawings to different scales the larger scale drawing is to be worked to.
- Do not scale drawing. Figured dimensions to be worked to in all cases.

CDM Regulations 2007

ALL current drawings and specifications for the project must be read in conjunction with the Designer's Hazard and Environmental Assessment Record.



DETAIL REFERENCE ELEVATION
 TYPE - 7

| date | rev | revision/author/checker |
|--|------------------|-------------------------|
| purpose of issue PLANNING | | |
| project BICESTER ECO TOWN EXEMPLAR SITE | | |
| drawing PROPOSED DETAILS FLATS [Brickwork / Render] | | |
| drawing no AA2699C/6.1/016 | | rev - |
| drawn JW | checked MB | |
| scale @ A1 1:20 & 1:10 | date JAN 2013 | |
| PRP Architects © 10 Lindsey Street Smithfield London EC1A 9HP T +44 (0)20 7653 1200 F +44 (0)20 7653 1201 lon.prp@prparchitects.co.uk | | |