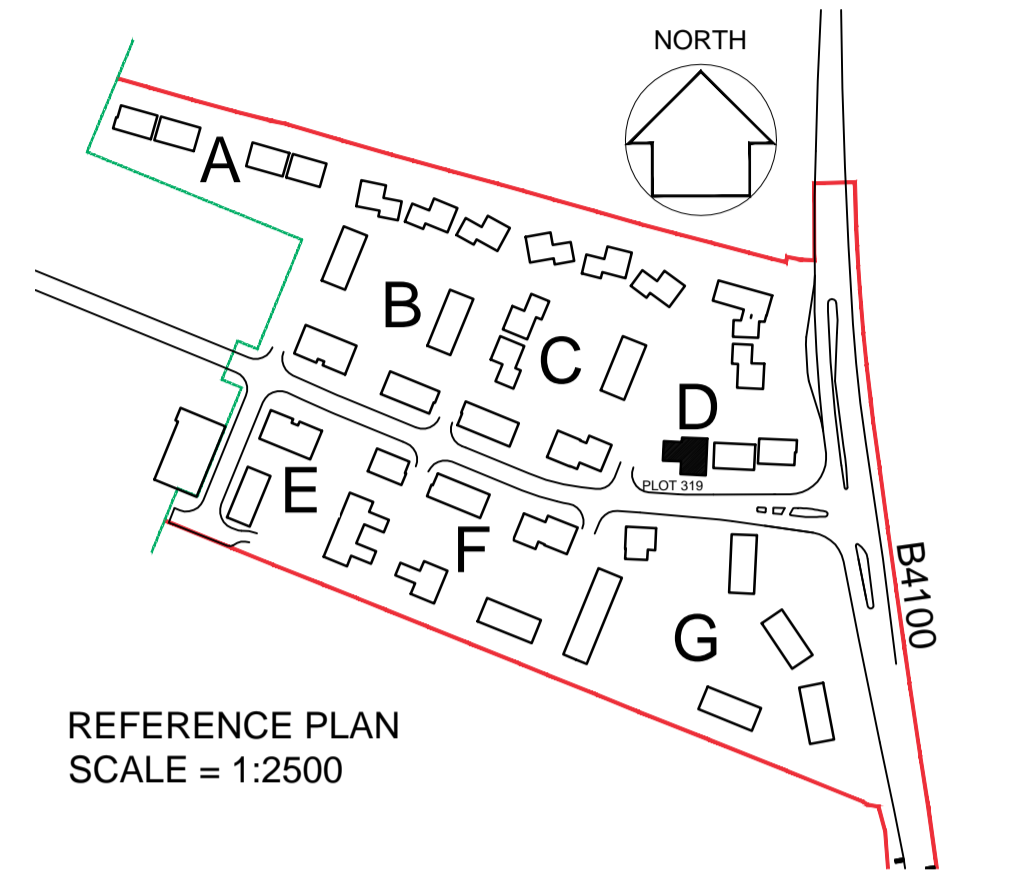


notes

- The contractor is responsible for checking dimensions, tolerances and references. Any discrepancy to be verified with the Architect before proceeding with the works.
- Where an item is covered by drawings to different scales the larger scale drawing is to be worked to.
- Do not scale drawing. Figured dimensions to be worked to in all cases.

CDM Regulations 2007
 ALL current drawings and specifications for the project must be read in conjunction with the Designer's Hazard and Environmental Assessment Record.

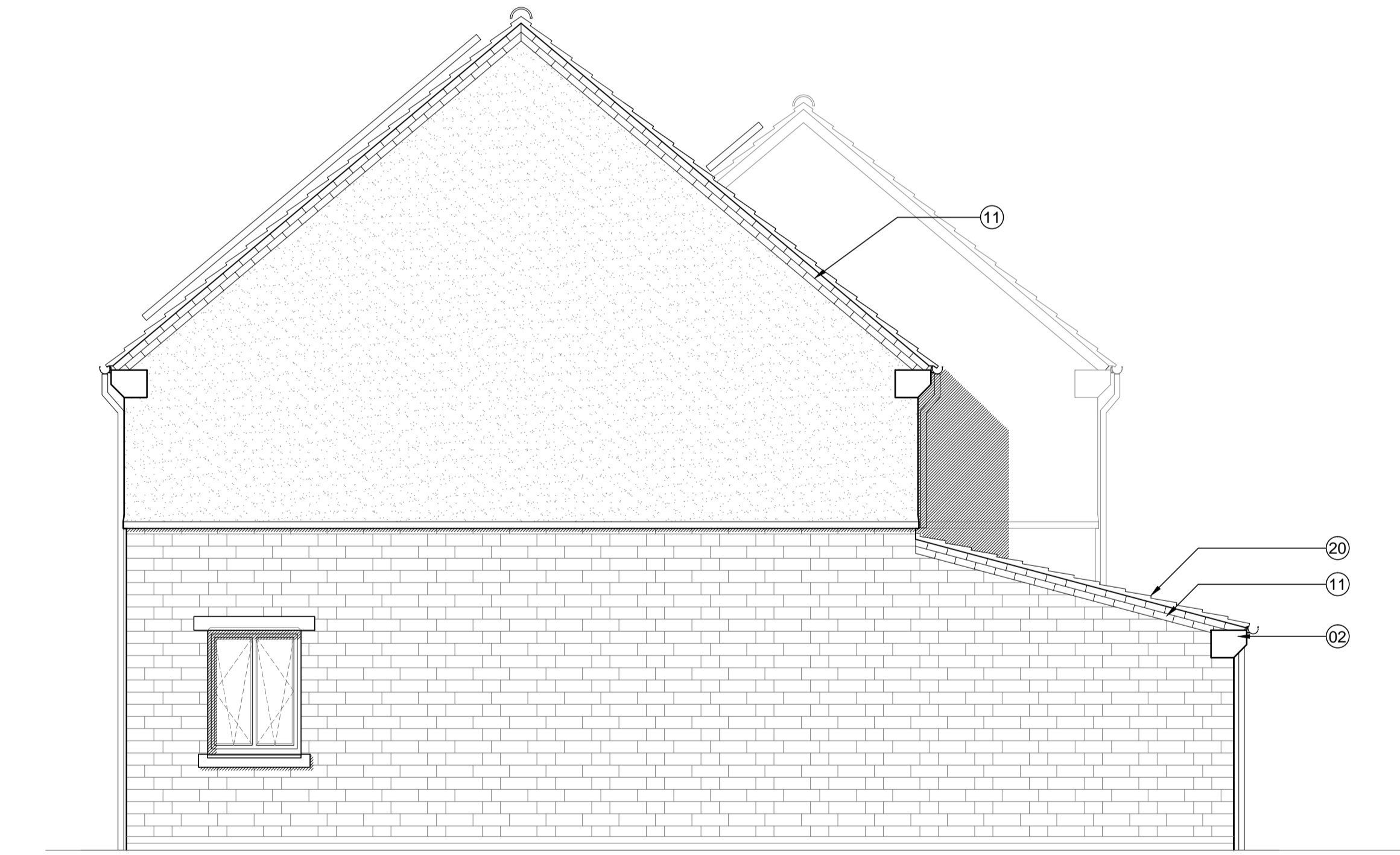
Notes:
 For general arrangement floor plans please refer to drawing AA2699C/4.1/310



Side Elevation

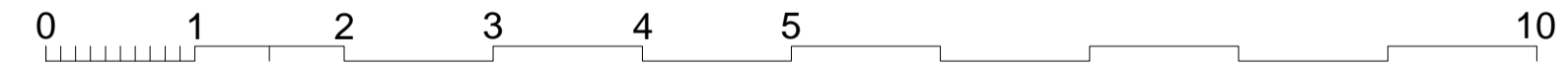


Front Elevation

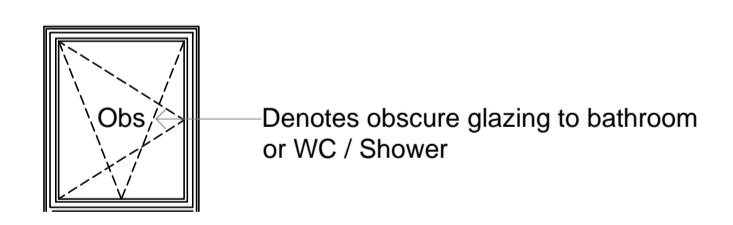


Side Elevation

TYPE - 1
 WALLS - Bekstone
 ROOF - Linear [Slate]



Rear Elevation



KEY TO MATERIALS & DETAILS

- | | | |
|--|---|---|
| 01 Coursed stonework [Beckstone 'Oolite'; laid in random course heights - no jumpers] | 08 Projecting brick header course to divide face brickwork below from render above; type / colour: to match face brickwork | 15 Rendered blockwork piers |
| 02 Reconstituted stone corbel unit [colour: Oolite] | 09 Brickwork window heads & cant brick cills; type / colour: to match face brickwork | 16 Reconstituted stone cill [colour: Oolite] |
| 03 Projecting reconstituted stone string course [colour: Oolite] to divide Beckstone below from render above. | 10 Brickwork corbel; type / colour: to match face brickwork | 20 Redland 'Cambrian' composite slate and ridge tile |
| 04 Reconstituted stone [colour: Oolite] heads with drip detail and stooled cill | 11 Clipped verge detail. 2No. courses face brickwork laid stretcher bond with natural colour bucket handle mortar joints; brick type / colour: Ibstock 'Capital Multi Stock'. | 21 Beckstone roof tile and ridge tile |
| 05 Face brickwork - Ibstock 'Capital Multi Stock'; laid stretcher bond with natural colour bucket handle mortar joints. | 12 Recessed brick panel | 22 South facing roof slope designated for PV array REF AA2699C/1.1/107 |
| 06 Face brickwork plinth; type / colour: Ibstock 'Capital Multi Stock'; with natural colour bucket handle mortar joints. | 13 Horizontal timber cladding [Thermowood; with natural untreated finish] | 23 Roof designated for meadow grass |
| 07 2No. course engineering quality brick below DPC, with natural colour mortar joints. [Ibstock 'Capital Multi Stock'] | 14 Through colour render; colour: Ivory | 24 Standing seam zinc roofing with concealed gutters and matching copings and fascias |
| | | 25 PPC aluminium coping; colour: Grey (RAL 7015) |

- | | | |
|--|--|---|
| 26 UPVC rainwater gutters & down pipes; colour: black. Fascia & soffit board; colour: white. | 43 Aluminium double glazed curtain wall system, colour: Grey RAL 7015, with look-a-like glazed spandrel panels | 50 Glazed side panel / fan light to match door |
| 27 Fascia & soffit board; colour: to match windows | 44 Up and over garage door; colour: to match windows | 51 Louvred doors to refuse and cycle stores; colour: Grey (RAL 7015) to match windows and doors |
| 28 Rain water hopper to match black upvc rain water goods | 45 Timber horizontal sliding garage door | 60 Steel support post to car port with painted finish; colour: to match windows |
| 29 GRP entrance canopy; Design to match house type; colour to match windows and doors | 46 Double glazed roof window | 61 Galvanised steel balustrade with painted finish and hardwood handrail |
| 40 High performance triple glazed UPVC window; design to match house type; colour: White | 47 IG doorset GRP Fibrecolour XD37 [type 1 and type 8 dwellings]; colour: to be selected | 62 Galvanised steel entrance gate with painted finish and hardwood handrail |
| 41 High performance triple glazed UPVC window; design to match house type; colour: Grey (RAL 7015) | 48 IG doorset GRP Fibrecolour XD18 [type 3 dwellings]; colour: Grey (RAL 7015) | 63 Painted GMS balconies, colour: Grey (RAL 7015) with toughened glass balustrade & s/steel handrails |
| 42 Sliding folding patio doors; colour to match adjacent windows | 49 IG doorset GRP Fibrecolour XD01 [type 5 dwellings]; colour: to be selected | 64 GRP entrance canopy; style to match dwelling type; colour to match windows and doors |

23-01-13 A Minor amendments status changed to planning
 DGH/JW

date	rev	revision/author/checker
------	-----	-------------------------

purpose of issue
PLANNING

project
**BICESTER ECO TOWN
 EXEMPLAR SITE**

drawing
**ELEVATIONS
 PLOT 319**

drawing no AA2699C/4.1/210	rev A
drawn ILA	checked
scale at A1 1:50	date DEC 2012

PRP Architects ©
 10 Lindsey Street
 Smithfield
 London
 EC1A 9EP
 T +44 (0)20 7653 1200
 F +44 (0)20 7653 1201
 ion.prp@prparchitects.co.uk