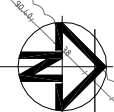
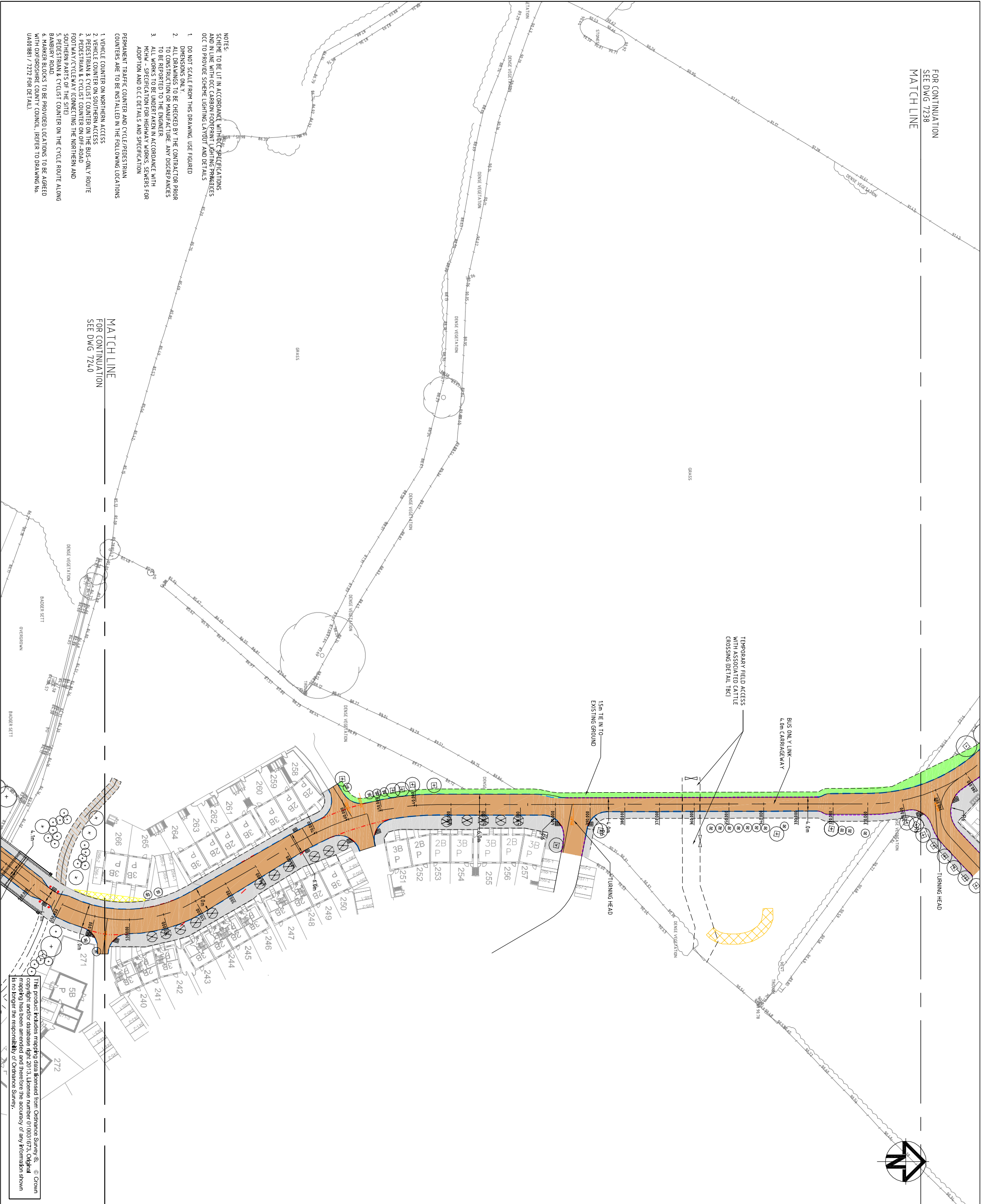


FOR CONTINUATION
 SEE DWG 7238
 MATCH LINE

MATCH LINE
 FOR CONTINUATION
 SEE DWG 7240

- NOTES:
 SCHEME TO BE LIT IN ACCORDANCE WITH OCC SPECIFICATIONS AND IN LINE WITH OCC CARBON FOOTPRINT LIGHTING PRACTICES OCC TO PROVIDE SCHEME LIGHTING LAYOUT AND DETAILS
- DO NOT SCALE FROM THIS DRAWING. USE FIGURED DIMENSIONS ONLY.
 - ALL DRAWINGS TO BE CHECKED BY THE CONTRACTOR PRIOR TO CONSTRUCTION OR MANUFACTURE. ANY DISCREPANCIES TO BE REPORTED TO THE ENGINEER.
 - ALL WORKS TO BE UNDERTAKEN IN ACCORDANCE WITH MCHM - SPECIFICATION FOR HIGHWAY WORKS. SEWERS FOR ADOPTION AND OCC DETAILS AND SPECIFICATION.
- PERMANENT TRAFFIC COUNTER AND CYCLE/PEDESTRIAN COUNTERS ARE TO BE INSTALLED IN THE FOLLOWING LOCATIONS
- VEHICLE COUNTER ON NORTHERN ACCESS
 - VEHICLE COUNTER ON SOUTHERN ACCESS
 - PEDESTRIAN & CYCLIST COUNTER ON THE BUS-ONLY ROUTE
 - PEDESTRIAN & CYCLIST COUNTER ON OFF-ROAD FOOTWAY/CYCLEWAY (CONNECTING THE NORTHERN AND SOUTHERN PARTS OF THE SITE)
 - PEDESTRIAN & CYCLIST COUNTER ON THE CYCLE ROUTE ALONG BARBURY ROAD
 - HARKER BLOCKS TO BE PROVIDED LOCATIONS TO BE AGREED WITH OXFORDSHIRE COUNTY COUNCIL. REFER TO DRAWING NO. UA001881 / 7232 FOR DETAIL.



KEY

- PROPOSED ADAPTABLE CARRIAGEWAY
- PROPOSED ADAPTABLE FOOTWAY
- PROPOSED ADAPTABLE FOOTWAY/CYCLEWAY
- PROPOSED ADAPTABLE VERGE
- PROPOSED ADAPTABLE ROADSIDE SLOPE FEATURE
- PROPOSED SUDS/POND FEATURE
- POND MAINTENANCE ACCESS (3.0m wide)
- PROPOSED COMMUNITY STREET CONNECTION
- GATEWAY FEATURE (DETAIL IN ABEYANCE)
- VISIBILITY SLAY - CONDITIONED RELATING TO HOUSEHOLD COVENANT
- UNCONTROLLED CROSSING POINT
- 4.0m FORWARD VISIBILITY SPLAY
- 2.4m x 3.3m VISIBILITY SPLAY
- 2m x 2m VISIBILITY SPLAY
- PROPOSED BOLLARD
- PROPOSED TREE AND TREE PIT (REFER TO DRAWING NO. UA001881-70-418 FOR DETAILS)
- FULLY ENCLOSED 3 BAY PASSENGER SHELTER, DETAILS T.B.C BY OXFORDSHIRE C.C.

Issue

Issue Description	Date
14. MINOR REVISIONS	17/05/13
13. TREE LAYOUT REVISED	25/03/13
12. HIGHWAY BOUNDARY REVISED	06/11/12
11. SPINE ROAD TREE LAYOUT REVISED	26/10/12
10. GENERAL REVISIONS	18/10/12
09. MASTERPLAN REVISED	05/10/12
08. CATTLE CROSSING NOTE AMENDED	07/09/12
07. MINOR REVISIONS	11/07/12
06. REVISED TO OCC COMMENTS	MAR 12
05. CARRIAGEWAY WIDTHS & BUS STOPS REVISED	02 Dec 11
04. FUTURE BUS STOP AND SPEED TABLE ADDED	04 NOV 11

Status
 DRAFT

Scales

Original Size	Author
A1	MILLETWELLIN
A0	CHESTER S.A.DAVIES
Datum	Approver S.A.DAVIES
Grid	© Copyright reserved

Client
 File: 7241-UA001881-UP21D-S38-14-GENERAL ARRANGEMENT.dwg



Hyder Consulting (UK) Limited
 29 Bressenden Place
 London
 SW1E 5DZ
 Tel: +44 (0)870 000 3006
 Fax: +44 (0)870 000 3005

Project
 BICESTER ECO
 DEVELOPMENT EXEMPLAR SITE

Title
 SPINE ROAD (S38)
 GENERAL ARRANGEMENT
 SHEET 2 OF 4

Drawing No 7239 — **Project No** UA001881 — **Issue** 14

This product includes mapping data licensed from Ordnance Survey. © Crown copyright and/or database right. 2013. License number: 01031673. Original copyright has been amended and therefore the accuracy of any information shown is no longer the responsibility of Ordnance Survey.