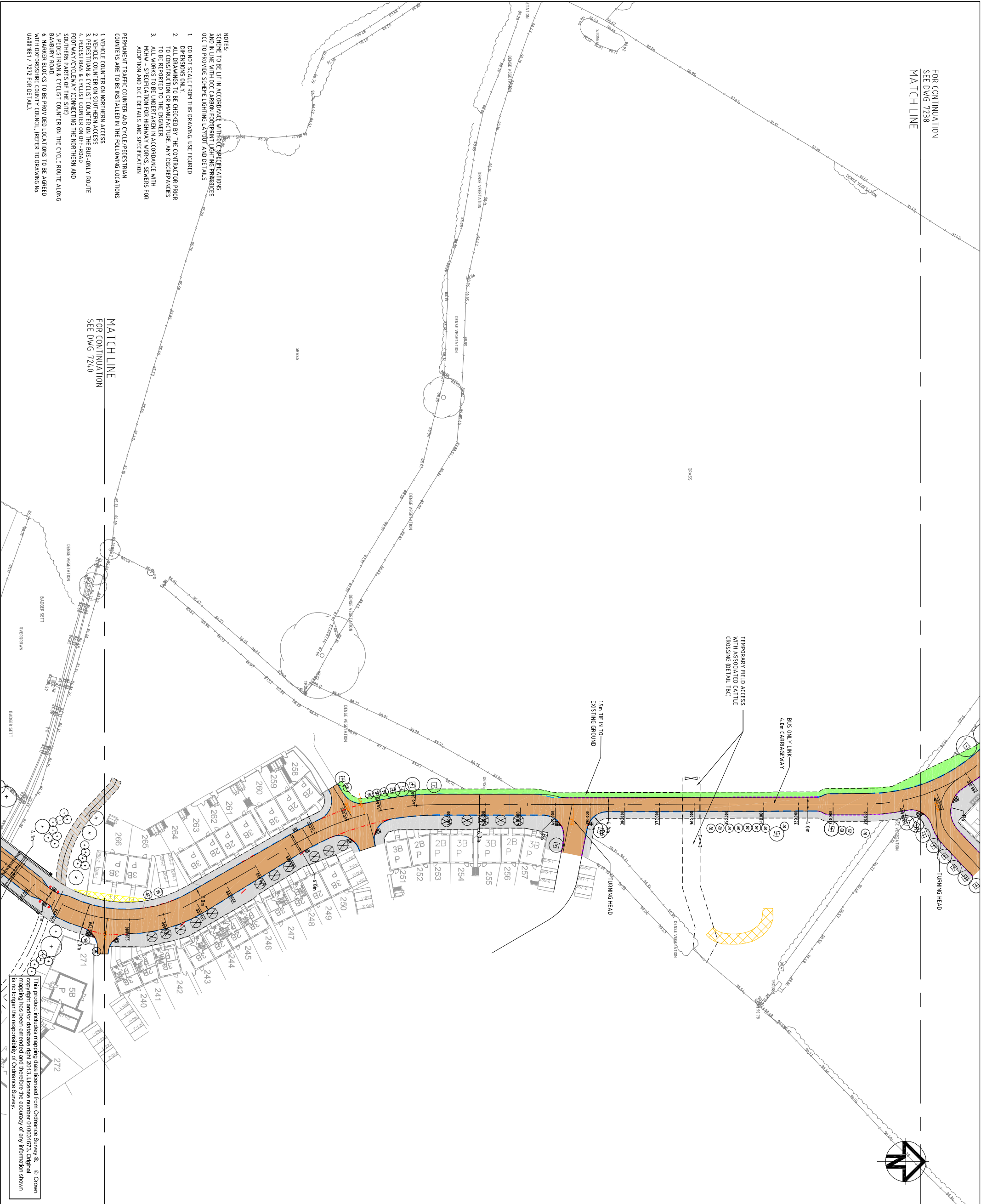


FOR CONTINUATION
 SEE DWG 7238
 MATCH LINE

MATCH LINE
 FOR CONTINUATION
 SEE DWG 7240

- NOTES:
 SCHEME TO BE LIT IN ACCORDANCE WITH OCC SPECIFICATIONS
 AND IN LINE WITH OCC CARBON FOOTPRINT LIGHTING PRACTICES
 OCC TO PROVIDE SCHEME LIGHTING LAYOUT AND DETAILS
- DO NOT SCALE FROM THIS DRAWING. USE FIGURED DIMENSIONS ONLY.
 - ALL DRAWINGS TO BE CHECKED BY THE CONTRACTOR PRIOR TO CONSTRUCTION OR MANUFACTURE. ANY DISCREPANCIES TO BE REPORTED TO THE ENGINEER.
 - ALL WORKS TO BE UNDERTAKEN IN ACCORDANCE WITH MCHM - SPECIFICATION FOR HIGHWAY WORKS, SEWERS FOR ADOPTION AND OCC DETAILS AND SPECIFICATION.
- PERMANENT TRAFFIC COUNTER AND CYCLE/PEDESTRIAN COUNTERS ARE TO BE INSTALLED IN THE FOLLOWING LOCATIONS
- VEHICLE COUNTER ON NORTHERN ACCESS
 - VEHICLE COUNTER ON SOUTHERN ACCESS
 - PEDESTRIAN & CYCLIST COUNTER ON THE BUS-ONLY ROUTE
 - PEDESTRIAN & CYCLIST COUNTER ON OFF-ROAD FOOTWAY/CYCLEWAY (CONNECTING THE NORTHERN AND SOUTHERN PARTS OF THE SITE)
 - PEDESTRIAN & CYCLIST COUNTER ON THE CYCLE ROUTE ALONG BARBURY ROAD
 - HARKER BLOCKS TO BE PROVIDED LOCATIONS TO BE AGREED WITH OXFORDSHIRE COUNTY COUNCIL. REFER TO DRAWING NO. UA001881 / 7232 FOR DETAIL.



This product includes mapping data licensed from Ordnance Survey. © Crown copyright and/or database right. 2013. License number: 01031673. Original copyright has been amended and therefore the accuracy of any information shown is no longer the responsibility of Ordnance Survey.

19/ Jun/2013 2:19 PM K:\UA001881_BicesterEco\E-OurDrawings\Civil Engineering\7238-7241-UA001881-UP21D-S38-14-GENERAL ARRANGEMENT.dwg

KEY

- PROPOSED ADAPTABLE CARRIAGEWAY
- PROPOSED ADAPTABLE FOOTWAY
- PROPOSED ADAPTABLE FOOTWAY/CYCLEWAY
- PROPOSED ADAPTABLE VERGE
- PROPOSED ADAPTABLE ROADSIDE SLOPE FEATURE
- PROPOSED SUDS/POND FEATURE
- POND MAINTENANCE ACCESS (3.0m wide)
- PROPOSED COMMUNITY STREET CONNECTION
- GATEWAY FEATURE (DETAIL IN ABEYANCE)
- VISIBILITY SLAY - CONDITIONED RELATING TO HOUSEHOLD COVENANT
- UNCONTROLLED CROSSING POINT
- 4.0m FORWARD VISIBILITY SPLAY
- 2.4m x 3.3m VISIBILITY SPLAY
- 2m x 2m VISIBILITY SPLAY
- PROPOSED BOLLARD
- PROPOSED TREE AND TREE PIT (REFER TO DRAWING NO. UA001881-70-418 FOR DETAILS)
- FULLY ENCLOSED 3 BAY PASSENGER SHELTER, DETAILS T.B.C BY OXFORDSHIRE C.C.

Issue

Issue Description	Date
14. MINOR REVISIONS	17/05/13
13. TREE LAYOUT REVISED	25/03/13
12. HIGHWAY BOUNDARY REVISED	06/11/12
11. SPINE ROAD TREE LAYOUT REVISED	26/10/12
10. GENERAL REVISIONS	18/10/12
09. MASTERPLAN REVISED	05/10/12
08. CATTLE CROSSING NOTE AMENDED	07/09/12
07. MINOR REVISIONS	11/07/12
06. REVISED TO OCC COMMENTS	MAR 12
05. CARRIAGEWAY WIDTHS & BUS STOPS REVISED	02 Dec 11
04. FUTURE BUS STOP AND SPEED TABLE ADDED	04 NOV 11

Status

DRAFT

Scales

1:500	Author: MILLEWELLIN
A1	Checker: S.A.DAVIES
0.5	Approver: S.A.DAVIES
0.5	Grid: © Copyright reserved

Client

File: 7241-UA001881-UP21D-S38-14-GENERAL ARRANGEMENT.dwg

Hyder Consulting (UK) Limited
 29 Bressenden Place
 London
 SW1E 5DZ
 Tel: +44 (0)870 000 3006
 Fax: +44 (0)870 000 3005

Project

BICESTER ECO
 DEVELOPMENT EXEMPLAR SITE

Title

SPINE ROAD (S38)
 GENERAL ARRANGEMENT
 SHEET 2 OF 4

Drawing No 7239 **Project No** UA001881 **Issue** 14