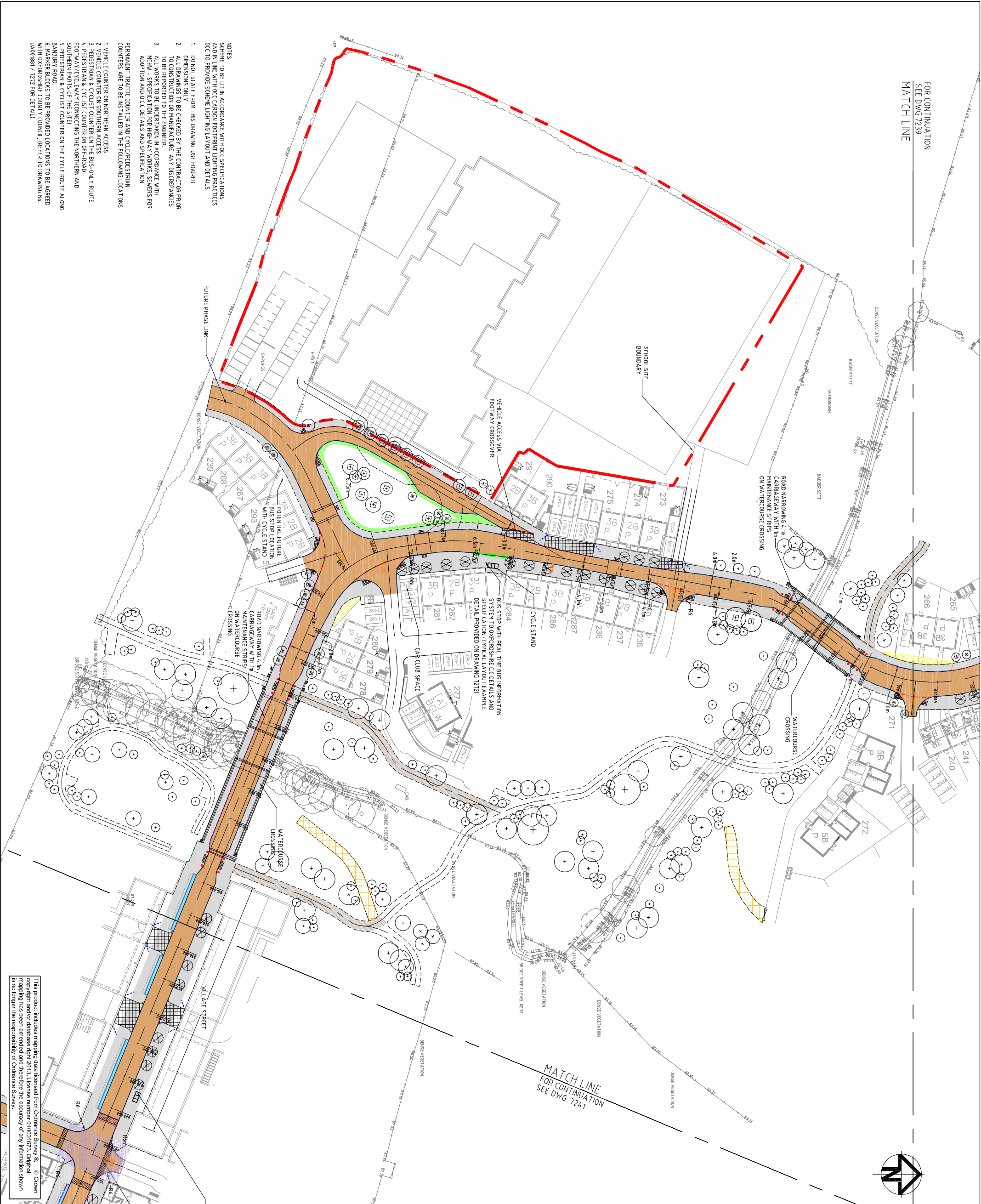
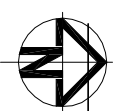


FOR CONTINUATION  
 SEE DWG 7239  
 MATCH LINE



- NOTES:
1. DO NOT SCALE FROM THIS DRAWING. USE FIGURED DIMENSIONS ONLY.
  2. ALL DIMENSIONS ARE TO BE CHECKED BY THE CONTRACTOR PRIOR TO CONSTRUCTION OR MAINTENANCE. ANY DISCREPANCIES TO BE REPORTED TO THE ENGINEER.
  3. ALL WORKS TO BE UNDERTAKEN IN ACCORDANCE WITH MCHW - SPECIFICATION FOR HIGHWAY WORKS, SEWERS FOR ADOPTION AND O.C.C DETAILS AND SPECIFICATION.
- PERMANENT TRAFFIC COUNTER AND CYCLE/PEDESTRIAN COUNTERS ARE TO BE INSTALLED IN THE FOLLOWING LOCATIONS
1. VEHICLE COUNTER ON NORTHERN ACCESS
  2. VEHICLE COUNTER ON SOUTHERN ACCESS
  3. PEDESTRIAN & CYCLIST COUNTER ON THE BUS-ONLY ROUTE
  4. PEDESTRIAN & CYCLIST COUNTER ON OFF-ROAD FOOTWAY/CYCLE AND PEDESTRIAN ROUTE ALONG THE SOUTHERN PARTS OF THE SITE
  5. PEDESTRIAN & CYCLIST COUNTER ON THE CYCLE ROUTE ALONG BANBURY ROAD
  6. MARKER BLOCKS TO BE PROVIDED. LOCATIONS TO BE AGREED WITH OXFORDSHIRE COUNTY COUNCIL. (REFER TO DRAWING NO. UA001881 / 7272 FOR DETAIL)



MATCH LINE  
 FOR CONTINUATION  
 SEE DWG 7241

This product includes mapping data licensed from Ordnance Survey. © Crown copyright and database right. 2013. License number 01031673. Ordnance Survey is not liable for the accuracy of any information shown on this map.

KEY

- PROPOSED ADAPTABLE CARRIAGEWAY
- PROPOSED ADAPTABLE FOOTWAY
- PROPOSED ADAPTABLE FOOTWAY/CYCLEWAY
- PROPOSED ADAPTABLE VERGE
- PROPOSED ADAPTABLE ROADSIDE SUDS FEATURE
- PROPOSED SUDS/POND FEATURE
- PROPOSED SUDS/POND FEATURE
- POND MAINTENANCE ACCESS (3.0m wide)
- PROPOSED COMMUNITY STREET CONNECTION
- GATEWAY FEATURE (DETAIL IN ABEYANCE)
- VISIBILITY SLAY - CONDITIONED RELATING TO HOUSEHOLD COVENANT
- UNCONTROLLED CROSSING POINT
- 4.0m FORWARD VISIBILITY SPLAY
- 2.4m x 3.0m VISIBILITY SPLAY
- 2m x 2m VISIBILITY SPLAY
- PROPOSED BOLLARD
- PROPOSED TREE AND TREE PIT (REFER TO DRAWING NO. UA001881-70-418 FOR DETAILS)
- FULLY ENCLOSED 3 BAY PASSENGER SHELTER. DETAILS T.B.C BY OXFORDSHIRE C.C.

Issue	Description	Date
14	ROAD CROSSING ADDED AT CH 431	17/05/13
13	TREE LAYOUT REVISED	25/03/13
12	HIGHWAY BOUNDARY REVISED	06/11/12
11	SPINE ROAD TREE LAYOUT REVISED	26/10/12
10	GENERAL REVISIONS	18/10/12
09	MASTERPLAN REVISED	05/10/12
08	FOOTPATHS REVISED	07/09/12
07	MINOR REVISIONS	11/07/12
06	REVISED TO O.C.C COMMENTS	MAR 12
05	CARRIAGEWAY WIDTHS & BUS STOPS REVISED	02 DEC 11
04	FUTURE BUS STOP AND SPEED TABLE ADDED	04 NOV 11

STATUS: DRAFT

Scale	Author
1:500	MILLETWELL

Original Size	Checker
A1	SADAVES

Height Datum	Approver
0.5	SADAVES

Grid: O.S. © Copyright reserved

Client: Filippi 7241-UA001881-UP21D-S38-14-GENERAL ARRANGEMENT.DWG

**azdominion**

Hyder Consulting (UK) Limited  
 29 Bressenden Place  
 London  
 SW1E 5DZ  
 Tel: +44 (0)870 000 3906  
 Fax: +44 (0)870 000 3906

**Hyder Consulting**

Project: BICESTER ECO DEVELOPMENT EXEMPLAR SITE

Title: SPINE ROAD (S38) GENERAL ARRANGEMENT SHEET 3 OF 4

Drawing No.	Project No.	Issue
7240	UA001881	14