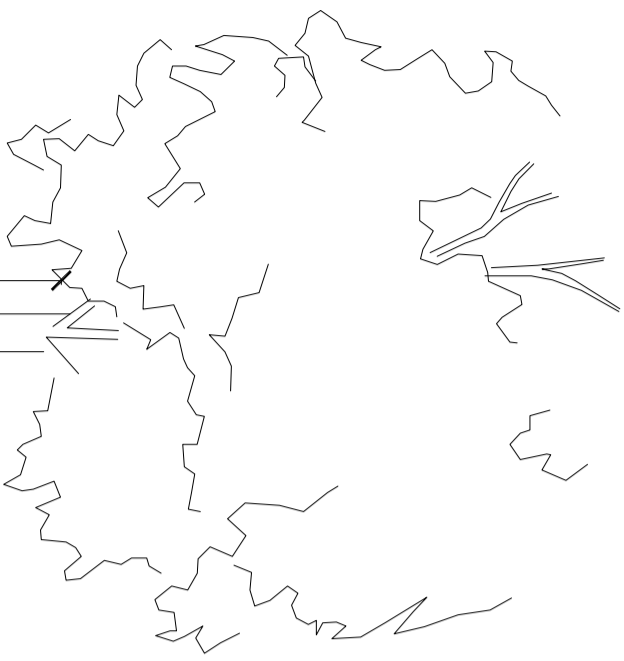
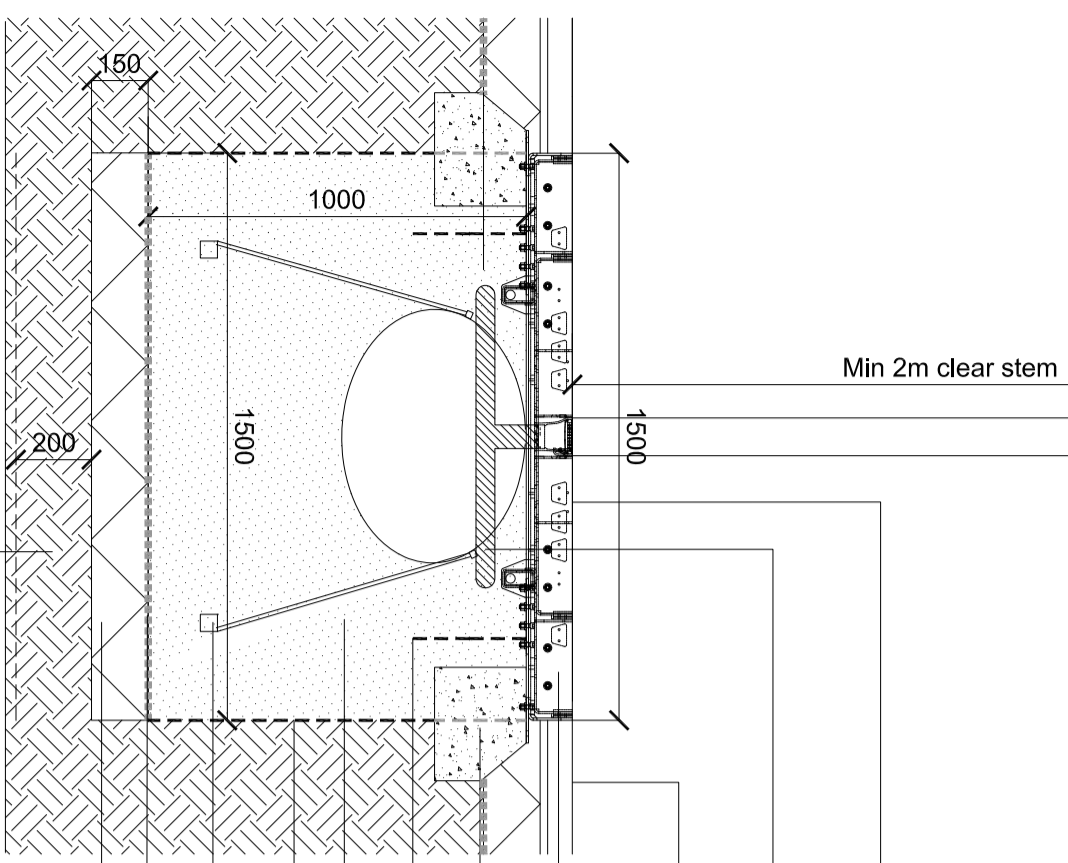


Isometric View
1500mm
Castle tree grille
Single tray (or similar approved)



Trees species / specification as
planting schedule



- Removable inner section to allow for tree growth
- Greenleaf Arborvent irrigation and aeration system or similar approved to engineers specification
- Footway material - construction to engineers specification
- Greenleaf Castle integrated tree grille or similar approved, filled with footway material
- Concrete foundation to tree grille to manufacturers requirements
- Root barrier, Greenleaf Ferroot 300 or similar approved. Ribs facing tree. Laid 200mm offset from football
- Compacted Urban tree soil - Greenleaf Arborsoil or similar approved
- Root Barrier if tree pit within 6,000mm of underground services or kerbs - Greenleaf 'Reroot 2000' in 1,000 or 1,500mm height*
- Underground Guying - Greenleaf Aboroguy Tree guying system or similar approved
- Geotextile membrane, Terram 1000 or similar approved
- 150mm clear washed stone to be included as necessary. 40mm single sized washed stone. no fines - each pit to be inspected following excavation to assess soil conditions and need for drainage layer.
- Subgrade - perforate to 200mm
- Bedrock approx 1200 to 1750mm below ground

Removable inner section to allow for tree growth

Greenleaf Arborvent irrigation and aeration system or similar approved to engineers specification

Footway material - construction to engineers specification

Greenleaf Castle integrated tree grille or similar approved, filled with footway material

Concrete foundation to tree grille to manufacturers requirements

Root barrier, Greenleaf Ferroot 300 or similar approved. Ribs facing tree. Laid 200mm offset from football

Compacted Urban tree soil - Greenleaf Arborsoil or similar approved

Root Barrier if tree pit within 6,000mm of underground services or kerbs - Greenleaf 'Reroot 2000' in 1,000 or 1,500mm height*

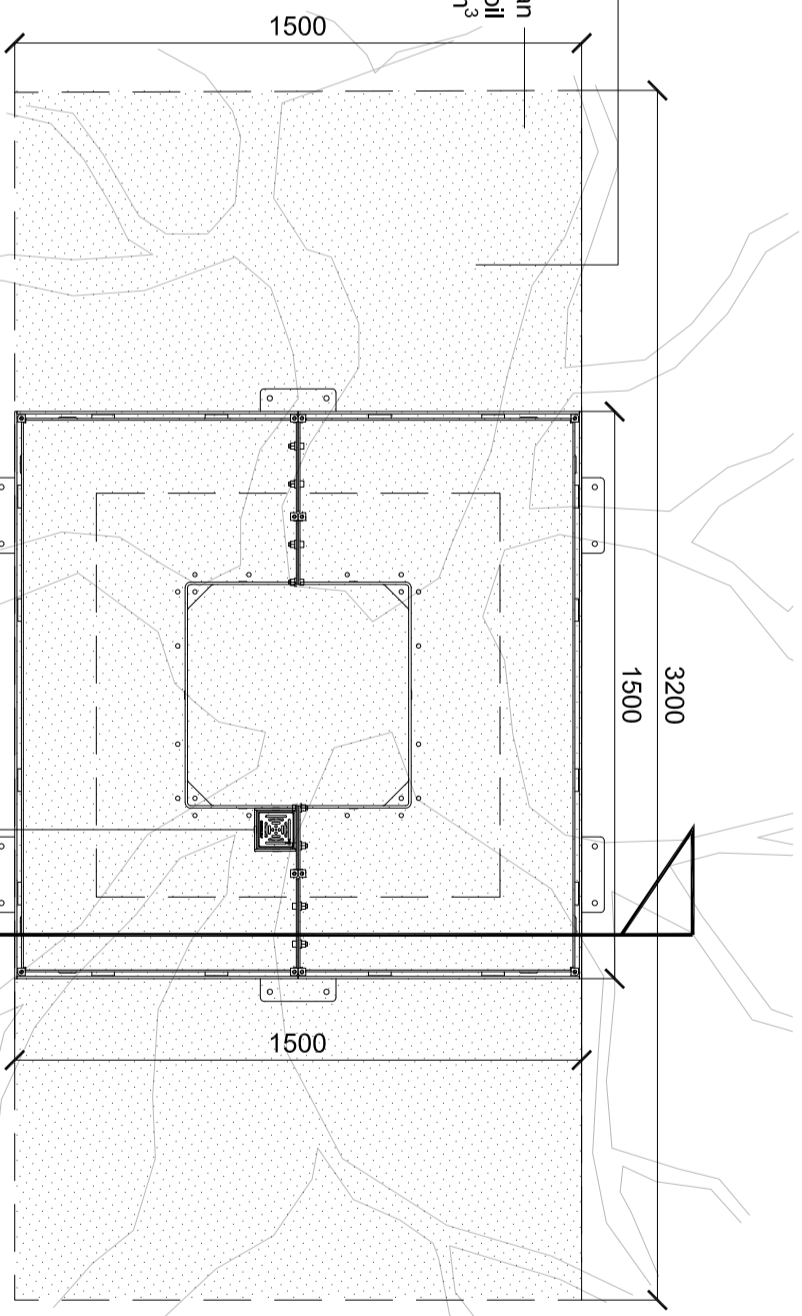
Underground Guying - Greenleaf Aboroguy Tree guying system or similar approved

Geotextile membrane, Terram 1000 or similar approved

150mm clear washed stone to be included as necessary. 40mm single sized washed stone. no fines - each pit to be inspected following excavation to assess soil conditions and need for drainage layer.

Subgrade - perforate to 200mm

TP-H-A Plan View
1500mm Greenleaf Castle recessed tree grille (Single tray) - Galvanised (or similar approved) Paving infill to match footway material



Greenleaf Arborvent irrigation and aeration system inlet or similar approved

TP-H-A Plan View
1500mm Greenleaf Castle recessed tree grille (Single tray) - Galvanised (or similar approved) Paving infill to match footway material

Tree Pit Details
Type: Greenleaf Castle Tree Grille (Single tray)
Material: Segments: Mild steel
Frame: Galvanised mild steel
Fittings: Stainless steel
Finish: Segments and Frame - Galvanised to BSEN 146 1999
Colour: Galvanised

All Construction to Manufacturers' recommendations
All products are or similar approved
For details of pit locations see drawings UA001884-701-114 to 116
Tree pit volume and use of structural tree soil in accordance with instruction from client agent following meeting between Silver, WDH and CDC on 20-06-14 and subsequent email from Silver dated 03-07-14.
Trees to be planted within the planting season (usually mid November to late March, dependant on suitable climatic conditions).

12	Revert to consented design, with updates	19-10-15
11	Annotation revision	04-06-15
10	Root barrier notes and Rr 300 added Depth/width ratio revised, notes added	26-09-14
09	Revert to previous design - section line added	19-08-14
08	Tree pit redesign-CDC comments	14-04-2014
07	Phase 1 details removed	22-08-2013
06	Annotation updated, granite setts added	16-08-2013
05	Annotation amendment	31-01-2013
04	Annotation amendment	11-01-13
03	Foundation to tree hoop altered	14-12-12
02	Or similar approve added to named products Additional detail added	01-10-12
01	DRAFT	06-09-12

Status
PLANNING
NOT FOR CONSTRUCTION

Scales	1: 20	Current Issue	Signatures
Original Size	A2	Author	B.CONNOLLEY
Height Datum	DATUM	Checker	A.VICTORY
Grid	GRID	Approver	R.KITCH

Filename: UA001884-701-800 TREE PIT DETAILS - HARDING
Client



Hyder
HYDER CONSULTING (UK) Limited
5th Floor, The Pitway
All Saints Street
Bristol, England
BS1 2NL
Tel: +44 (0)870 000 3903
Fax: +44 (0)870 000 3903

Project
Bicester Eco
Development

Title
Tree Pit Details
Hard

Drawing No. | Project No. | Issue
701-800 - UA001884 12