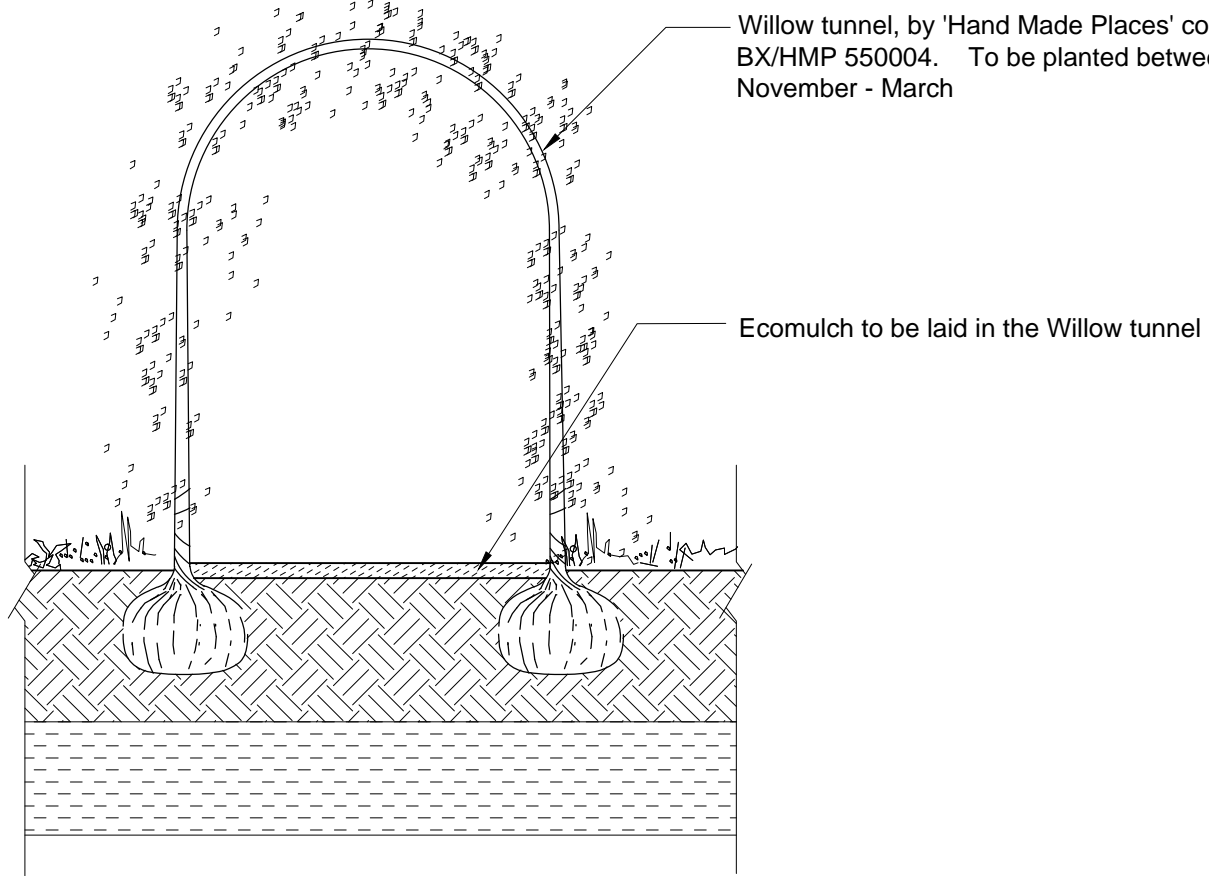
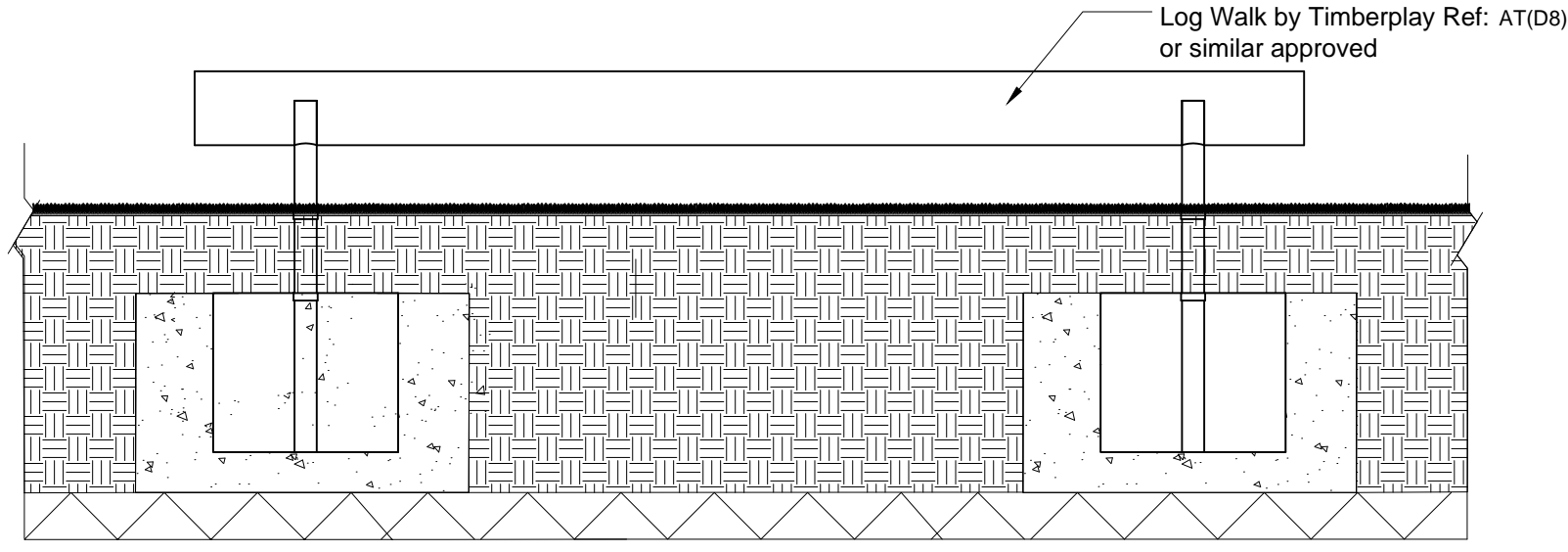


01 Stepping logs details
1:20

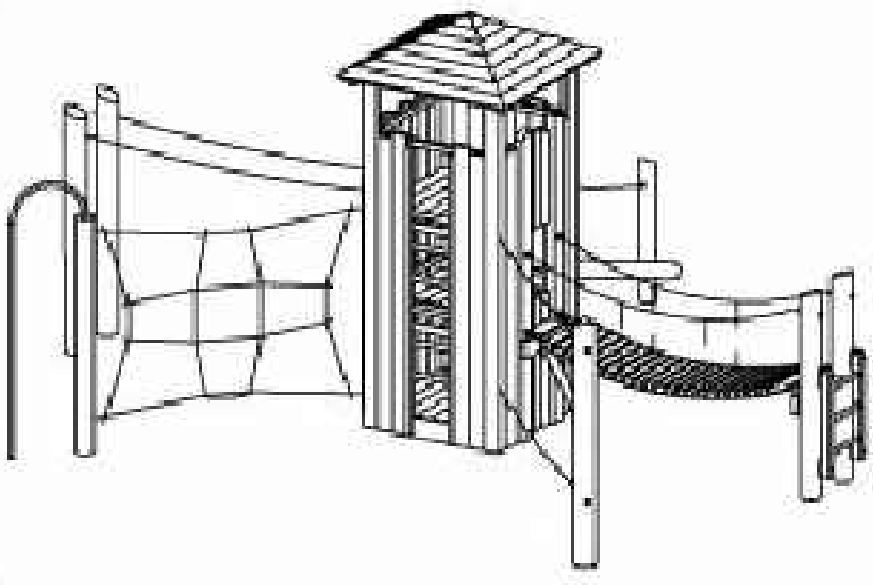


02 Willow tunnel section
1:20



03 Log Walk
1:20

2.33000 Tower Combination 33



Order Number
2.33000

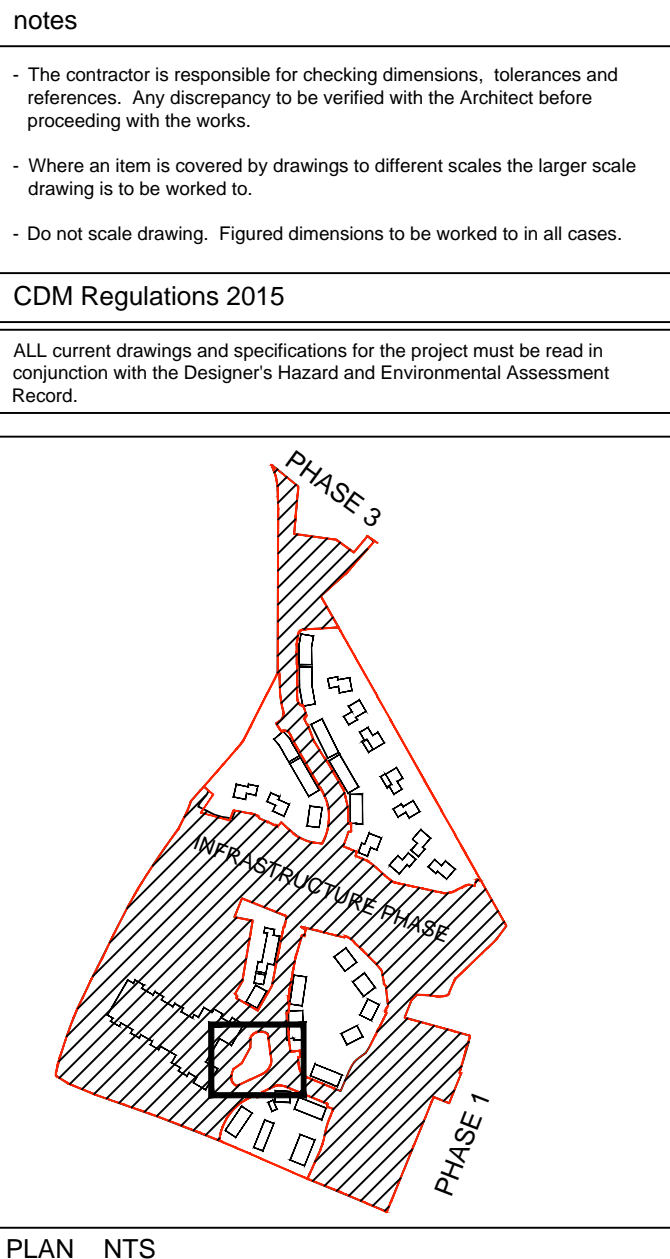
Designer
Richter Spielgeräte

Product-PDF
Not available.

Certificates
[TUEV Zert Req 02.pdf \(719.0 KB\)](#)

Maintenance Documents
[W2.33000En-EN.pdf \(322.0 KB\)](#)

- KEY**
- Boundary line
 - Area by others
- PAVING TYPES**
- P1 Permeable concrete block paving Marshalls Myriad Priora 100x200x80mm. Colour - Morning Light. Pattern herringbone
 - P2 Permeable concrete block paving Marshalls Myriad Priora 200x200x80mm. Colour - Midnight. Pattern Random coarse.
 - P3 Concrete flag paving Marshalls Renaissance 450x450x50mm - Colour Chalkstone (impermeable)
 - P4 Marshalls Pendle Riven buff slabs, in rear gardens 600x600mm (impermeable)
 - P5 Self binding gravel, amber gold colour
 - P6 Tarmac
 - P7 Resin bound gravel barley beach colour with conc kerb edging
 - P8 Wetpour safety surface colour dark blue, with lip rubber kerb to edge
- PLAY**
- Timber Play Tower Combination 33. Product ref: 2.33000. Includes: Vertical climbing net with firemen's pole, Double hanging rope, Inclined balancing beam, Suspension bridge, Balancing rope with holding rope.
 - Timber stepping logs by Playdale or similar approved. Ref: Log walk. Product code: AT(D8)
 - Bench, broxap Medway Seat BX14 4026
 - Willow tunnel, by 'Hand Made Places' code BX/HMP 550004. To be planted between November - March
 - Edible sensory planting
 - Straight balancing beam by Timber Play or similar approved. Ref: Log walk. Product code: AT(D8)
 - Playscape Eco-Tumble surface



05/04/2017 B		Playscape eco tumble added	
02/03/2017 A		amended to reflect planners comments	
date	rev	revision/author/checker	
purpose of issue			
PLANNING			
project			
Bicester Eco Town Exemplar Site, Phase 2			
drawing			
Play area			
drawing no		rev	
AL4908-2107		B	
drawn	MQ	checked	AGF
scale @ A1 1:100		date	Feb '17
PRP Architects © 10 Lindsey Street Smithfield London EC1A 9HP T +44 (0)20 7653 1200 F +44 (0)20 7653 1201 lon.prp@prparchitects.co.uk			
