

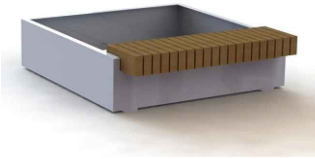
| KERBING KEY | |
|-------------|--|
| HB2 | - 125x255 HB2 kerb (125mm face) |
| BN | - 125x150 BN15 dropped (15mm face) |
| DK0 | - 125x150 BN15 dropped (0mm face) |
| EF | - 50x150 EF edging laid flush |
| T | - Dropper/transition kerbs as required |
| CS | - square edged channel block |
| BJ | - Blocks Butt Jointed together |
| mb | - Highway marker block |
| TB | - Timber Bollard (OCC Approved) |
| GS | - Circle of Granite Setts |

| | |
|--|--|
| | Permeable Charcon Andover Stratford Infiltra Colour - Silver Grey: Laying Pattern - stretcher bond (refer to drg 11-1196-20 - Detail B) |
| | Permeable Charcon Woburn Rumble Infiltra Colour - Rustic: Laying Pattern - stretcher bond (refer to drg 11-1196-20 - Detail B) |
| | Permeable Charcon Andover Stratford Infiltra Colour - Charcoal: Laying Pattern - stretcher bond (refer to drg 11-1196-20 - Detail B) |
| | Permeable Charcon Infiltra Colour - Grey: Laying Pattern - herringbone (refer to drg 11-1196-21 - Detail A) |
| | Permeable Charcon Infiltra Colour - Burnt Oker: Laying Pattern - herringbone (refer to drg 11-1196-21 - Detail A) |
| | Impermeable Charcon Woburn Rumble Colour - Graphite: Laying Pattern - stretcher bond (refer to drg 11-1196-21 - Detail B) |
| | Impermeable Natratex surfacing (with contrasting inset colour where noted on plans) (refer to drg 11-1196-20 - Detail A) |
| | Soft landscaping (refer to Hyder drawings) |
| | Ecodeck (refer to detail on drg 11-1196-20) |
| | Granite Setts (refer to detail on drg 11-1196-20) |
| | Proposed Limit of O.C.C. Section 38 adoption To be agreed |
| | Limit of Phase 1 works - Refer to Hyder drawings for details of Spine Road |
| | Sureset Recycled Glass 6mm Aggregate set within granite setts sunk into ground Colour A=Wild Lavender, Colour B=Pacific (refer to detail on drg 11-1196-20) |
| | Timber Bollard with reflective strip (OCC approved) |
| | Arc of granite sets laid flush (Double row) (refer to drawing 11-1196-20) |

To be read in conjunction with 12-1196-04 series drawings



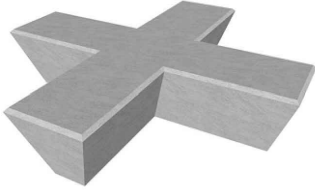
Bench Type 1



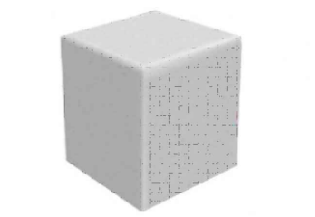
Bench Type 2 Timber post walkway
(0.2m to 0.4m high)



Bench Type 3



Bench Type 4



Bench Type 5



Cycle stand

Drawing to be read in conjunction
with 12-1196-04 series drawings

| WILLMOTT DIXON HOUSING | |
|------------------------|--------|
| REVIEWED | |
| PRELIMINARY | STATUS |
| FOR COMMENT | A |
| FOR CONSTRUCTION | B |
| SIGNED | C |
| DATE | |

| Rev | Drawn by | Chk'd by | Comments | Date |
|-----|----------|----------|--|----------|
| P7 | NJ | TST | Spherical bollards replaced with timber bollards following OCC Highways consultation | 01/04/14 |
| P8 | NJ | TST | Amendments in accordance with latest Willmott Dixon comments (June 2014) | 20/06/14 |
| P9 | NJ | TST | Amended in accordance with Willmott Dixon Housing comments (July 2014) | 21/07/14 |
| P10 | NJ | TST | Additional elements of play added following CDC comments | 07/08/14 |
| C1 | NJ | TST | Issued for construction | 23/09/14 |
| C2 | NJ | TST | Key amended, refer to clouded area | 02/07/15 |



| | | |
|-------------------------------|--|---|
| DATE 02/07/2013 | DESIGNED BY TST | TITLE Community Street 5 Bicester Southfields Eco Village Bicester, Oxon |
| SCALE 1:100 @ A1 | | |
| STATUS CONSTRUCTION | DRAWING NUMBER 12-1196-07 Com5 Rev C2 | |



INFRASTRUCT CS LTD
Consulting Civil and Structural Engineers
26A High Street, Eynsham, Oxford, OX29 4HB
Tel: 01865 880909
Email: info@infrastructcs.co.uk
Web: www.infrastructcs.co.uk