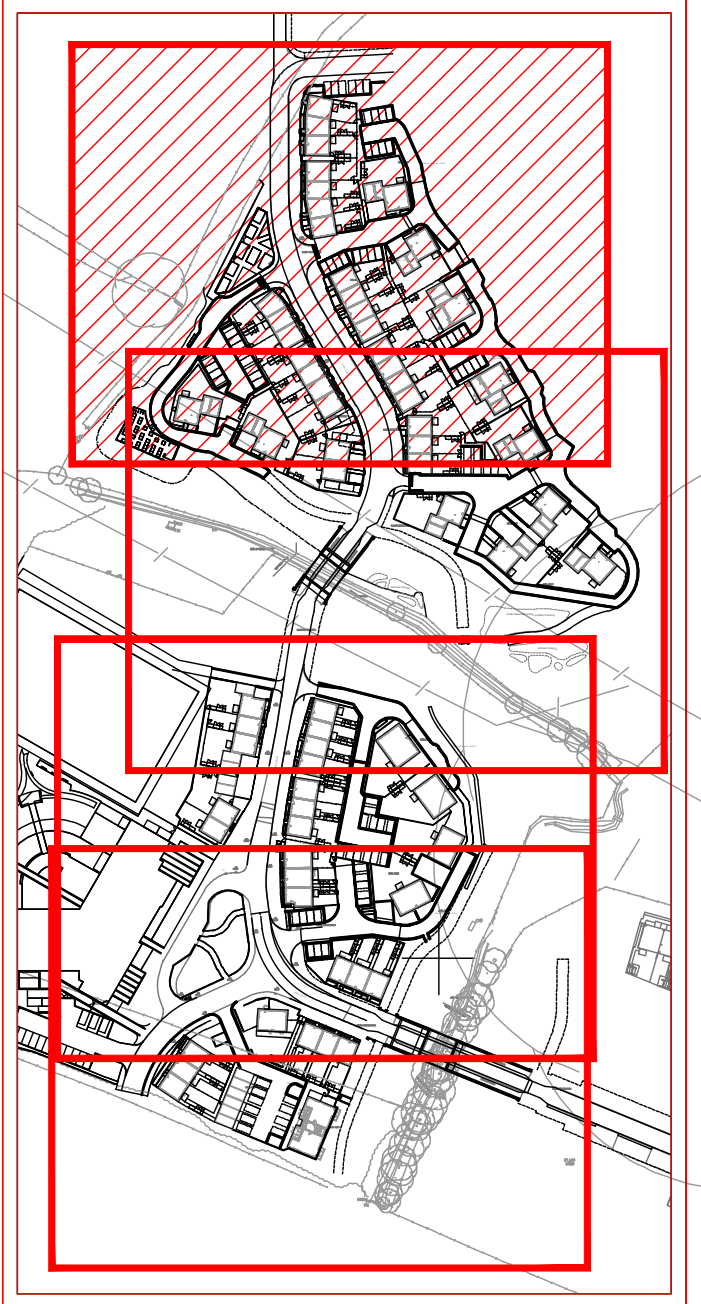


MANHOLE REF	INVERT LEVEL	COVER LEVEL	GRADE 1 in	PIPE Ø (mm)	LENGTH
F14a	87.306	88.64			
F14b	87.825	88.85	10.6	100	5.5
F14c	88.100	88.85	60	100	16.5
F14d	87.850	88.82			
F14e	88.200	89.00	52.8	100	18.5
F14f	88.000	89.16			
F14g	88.425	89.20	13	100	5.5
F14h	88.500	89.25	60	100	4.5
F15a	87.009(150) 87.059(100)	89.25			
F15b	88.225	89.19	21	100	24.5
F15c	88.400	89.25	31.4	100	5.5
F15d	88.225	89.19			
F15e	88.300	89.14	60	100	4.5
F15f	87.009(150) 87.059(100)	89.25	11.4	100	9.5
F15g	88.883	89.55	60	100	21.5
F15h	89.100	90.00			
F15i	89.275	90.00	3.5	100	6.5
F16a	89.400	90.22	60	100	12.0
F16b	89.600	90.45			
F16c	89.700	90.45	60	100	6.0

To be confirmed prior to commencing works on site



Sheet Arrangement (1:2500)

DESIGNER'S CDM NOTE - RESIDUAL RISKS NOT IDENTIFIED

The design Engineer(s) have assessed this design as the scheme has been developed in order to identify if there are any residual risk hazards (i.e. unusual, unexpected, abnormal or difficult).

No residual risks have been identified for this scheme and therefore no entries were added to the risk register.

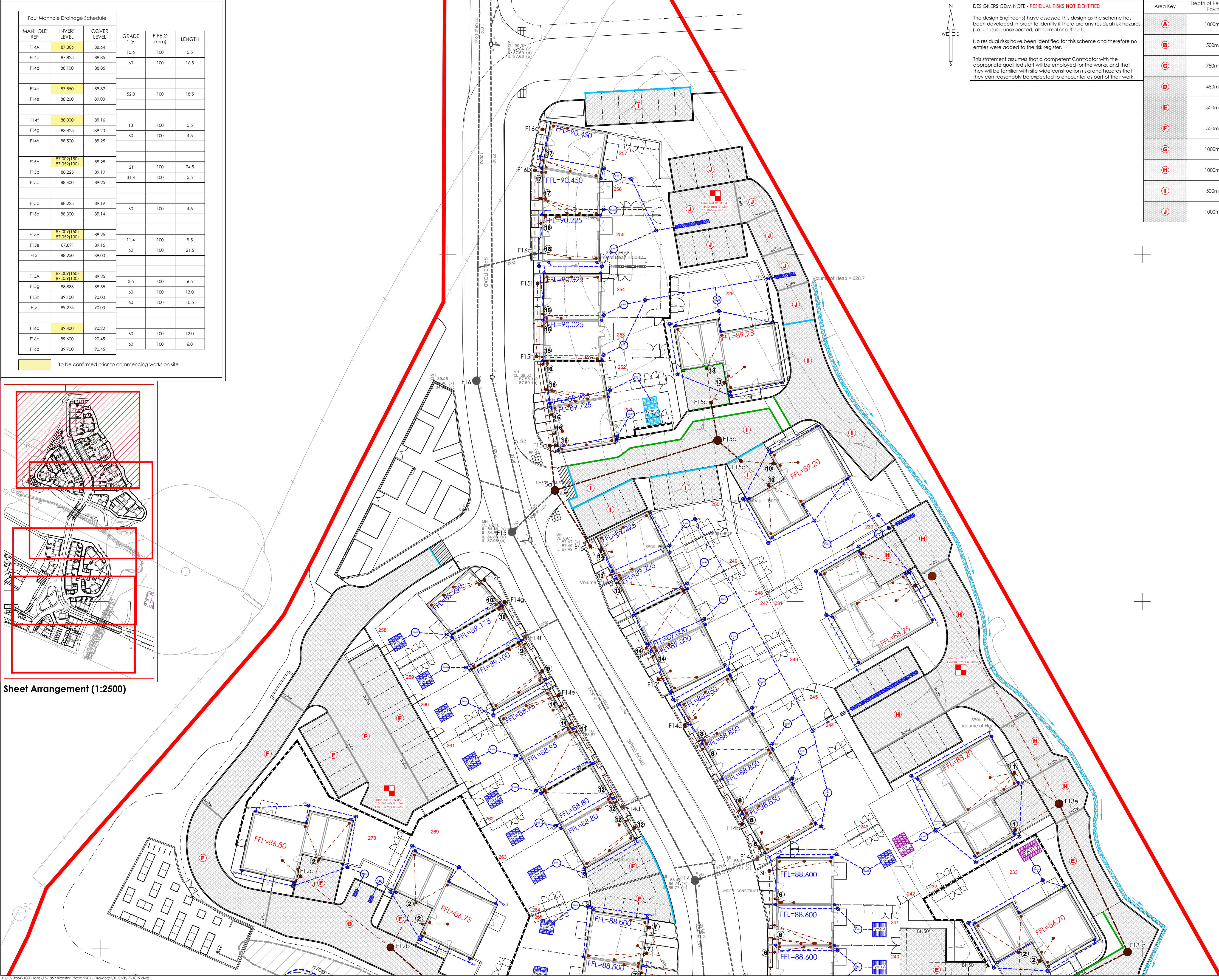
This statement assumes that a competent Contractor with the appropriate qualified staff will be employed for the works, and that they will be familiar with site wide construction risks and hazards that they can reasonably be expected to encounter as part of their work.

Area Key	Depth of Permeable Paving
A	1000mm
B	500mm
C	750mm
D	450mm
E	500mm
F	500mm
G	1000mm
H	1000mm
I	500mm
J	1000mm

Sewers	
---	Foul water drain (private/non adoptable)
---	Surface water drain (private/non adoptable)
---	Foul water sewer (Adoptable)
---	Surface water sewer (Adoptable)
---	Existing foul water sewer (Adopted)
---	Existing surface water sewer (Adopted)

Chamber Key	
○	Mini access chamber (mac) - 300mmØ*
○	PPIC - 475mmØ* - CP = Catchpit
□	P.C.C. units/brick *
□	Adoptable demarcation manhole within 1m of boundary *
○	Manhole Depth 1.25 to 1.5m * Depth 1.55 to 3.0m *

Soakaway Table		
Key	Type	Dimension
■	Type A	2m x 2m x 0.8m deep
■	Type B	2m x 4m x 0.8m deep
■	Type C	2m x 3m x 0.8m deep
■	Type D	1.5m x 2m x 0.8m deep



Ref	Level
9	88.35
10	88.40
11	88.20
12	88.05
13	88.50
14	88.25
15	89.25
16	89.00
17	89.70
18	89.45

P01	NJ	TST	Initial issue	03/02/16
Rev	Drawn by	Chk'd by	Comments	Date

DRAWING TITLE
Proposed Drainage Plan Sheet 1/4

PROJECT
Phase 2 Bicester Eco Village Bicester Oxon

DESIGNED BY TST	DRAFTED BY NJ	APPROVED BY DJ
DATE 03/02/2016	STATUS SUBJECT TO TECHNICAL APPROVAL	
SCALE 1:250 @ A1	Scale Bar @ 1:250	

CLIENT

JOB NUMBER: 15-1859 | DRAWING NUMBER: 03-1 | REVISION: P01