

The contractor is responsible for checking dimensions, tolerances and references. Any discrepancy to be verified with the Architect before proceeding with the works. Where an item is covered by drawings to different scales the larger scale drawing is to be worked to.

Do not scale drawing. Figured dimensions to be worked to in all cases.
 CDM REGULATIONS 2015. All current drawings and specifications for the project must be read in conjunction with the Designer's Hazard and Environment Assessment Record
 All intellectual property rights reserved.

FOR CONDITION 15 DETAILS REFERENCED A TO P:
 SEE DWG SHEET A2699C(2) 2510
 FOR CONDITION 15 DETAILS REFERENCED Q TO FF:
 SEE DWG SHEET A2699C(2) 2511
 FOR CONDITION 15 DETAILS REFERENCED Gg TO Pp:
 SEE DWG SHEET A2699C(2) 2512



TYPE - 1
 WALLS - Bekstone
 ROOF - Linear (Slate)

Front Elevation indicated, refer to Section 96a Dwg AA2699(2) 2100
 Applies to Plots 229 & 233



TYPE - 1
 WALLS - Bekstone
 ROOF - Linear (Slate)

Front Elevation indicated, refer to Section 96a Dwg AA2699(2) 2101 & 2102
 Applies to Plots 230, 231, 232 (Handed), 234 & 235



TYPE - 1
 WALLS - Brickwork with render to first floor
 ROOF - Linear (Slate)

Front Elevation indicated, refer to Section 96a Dwg AA2699(2) 2103
 Applies to Plot 270



TYPE - 1
 WALLS - Bekstone with render to first floor
 ROOF - Linear (Slate)

Front Elevation indicated, refer to Section 96a Dwg AA2699(2) 2104 & 2124
 Applies to Plots 269, 271 (Handed), 272, 293, 294, 295



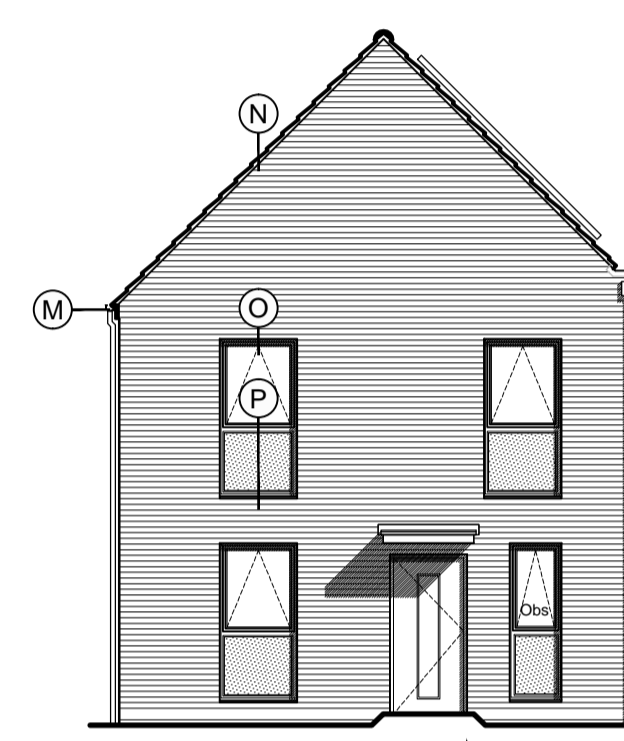
TYPE - 1
 WALLS - Bekstone with render to first floor
 ROOF - Linear (Slate)

Front Elevation indicated, refer to Section 96a Dwg AA2699(2) 2119 & 2126
 Applies to Plots 278, 279, 280 & 300



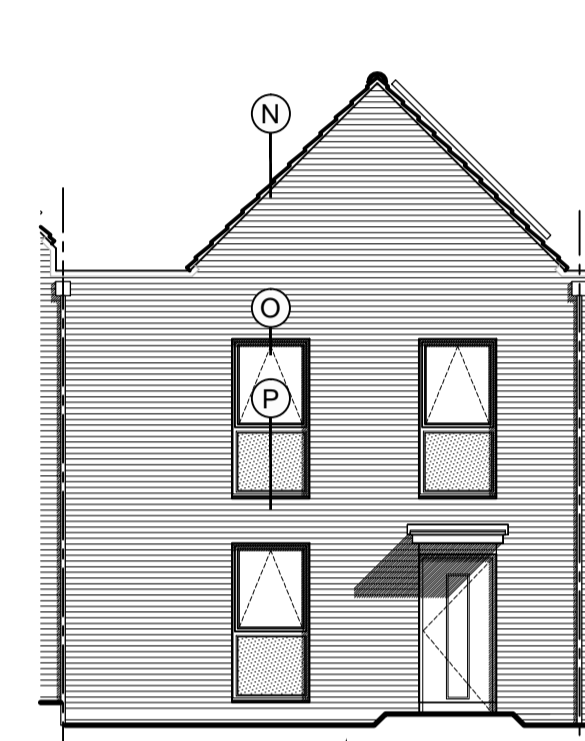
TYPE - 3
 WALLS - Brick work
 ROOF - Linear - slate

Front Elevation indicated, refer to Section 96a Dwg AA2699(2) 2107, 2108 & 2112
 Applies to Plots 243 to 250 & 261 to 264

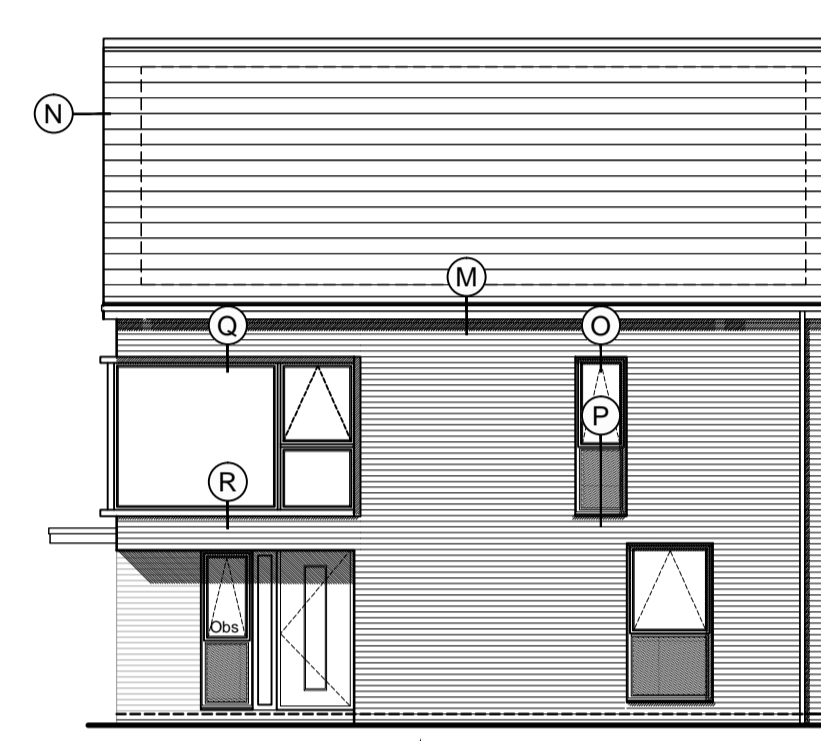


TYPE - 3
 WALLS - Brick work
 ROOF - Gable - Slate

Front Elevation indicated, refer to Section 96a Dwg AA2699(2) 2105, 2109, 2117, 2120 to 2123
 Applies to Plots 235 to 239, 251, 253, 254, 267, 268, 273, 274, 275, 282 to 286, 290 & 291



Front Elevation indicated, refer to Section 96a Dwg AA2699(2) 2109
 Applies to Plot 252 only



Side Elevation indicated, refer to Section 96a Dwg AA2699(2) 2120
 Applies to Plot 281 only



TYPE - 3
 WALLS - Render/Timber clad
 ROOF - Gable - slate

Front Elevation indicated, refer to Section 96a Dwg AA2699(2) 2106
 Applies to Plots 240, 241 & 242



TYPE - 7 (Flats)
 WALLS - Brick / horizontal timber cladding
 ROOF - Flat, single ply membrane

Front Elevation indicated, refer to Section 96a Dwg AA2699(2) 2125
 Applies to Plots 296 to 299



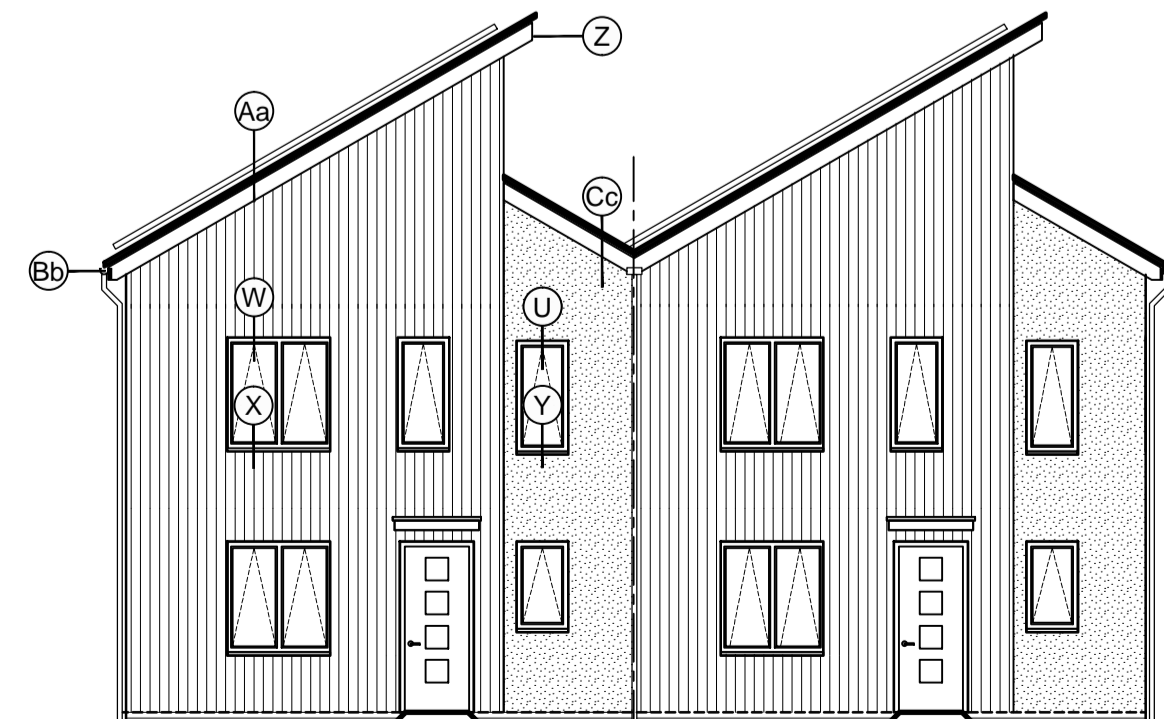
TYPE - 8
 WALLS - 1/2 Bekstone; 1/2 Render
 ROOF - Sawtooth - [slate + green]

Front Elevation indicated, refer to Section 96a Dwg AA2699(2) 2118 & 2122
 Applies to Plots 276 & 277, 288 & 289 (Similar)



TYPE - E (Enriched [Higgs Young])
 WALLS - Render / Timber clad
 ROOF - Saw tooth - slate

Front Elevation indicated, refer to Section 96a Dwg AA2699(2) 2110 & 2111
 Applies to Plots 255 to 257 & 258 to 260 (Handed & similar)



TYPE - E (Enriched [Higgs Young])
 WALLS - Render / Timber clad
 ROOF - Saw tooth - slate

Front Elevation indicated, refer to Section 96a Dwg AA2699(2) 2113
 Applies to Plots 265 & 266

Rev	Date	Description	MEF	RS	Dwn	Ckd
-	05.02.2016	Issued for Condition 15 Discharge & Planning approval.				

BICESTER ECO TOWN - PHASE 2
 CONDITION 15
 DWELLING TYPE ELEVATIONS

AA2699C(2) 2500 **REV -**
PLANNING

Drawn MEF Checked RS Date JAN 2016 Scale @ A1 1:100