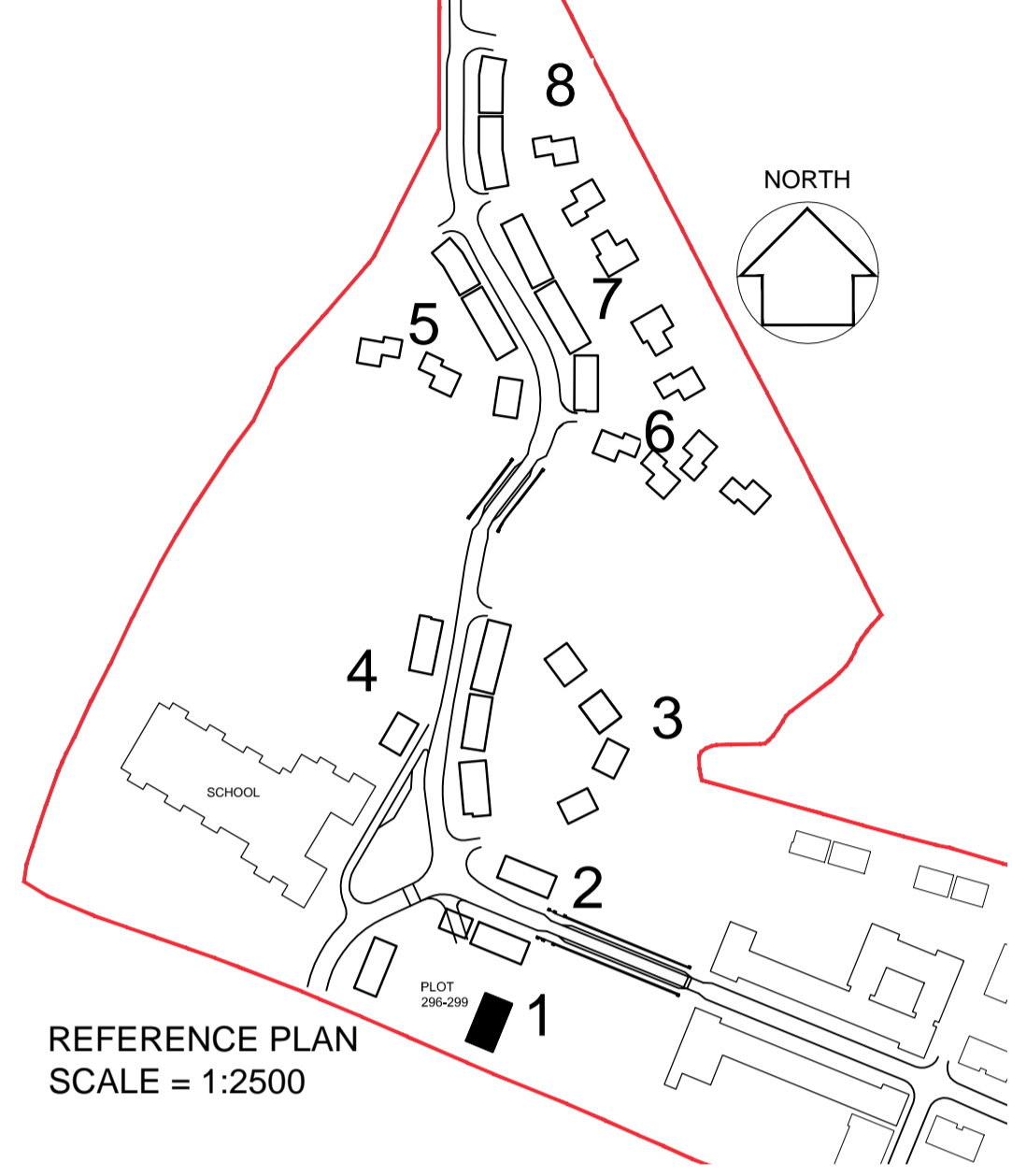


notes

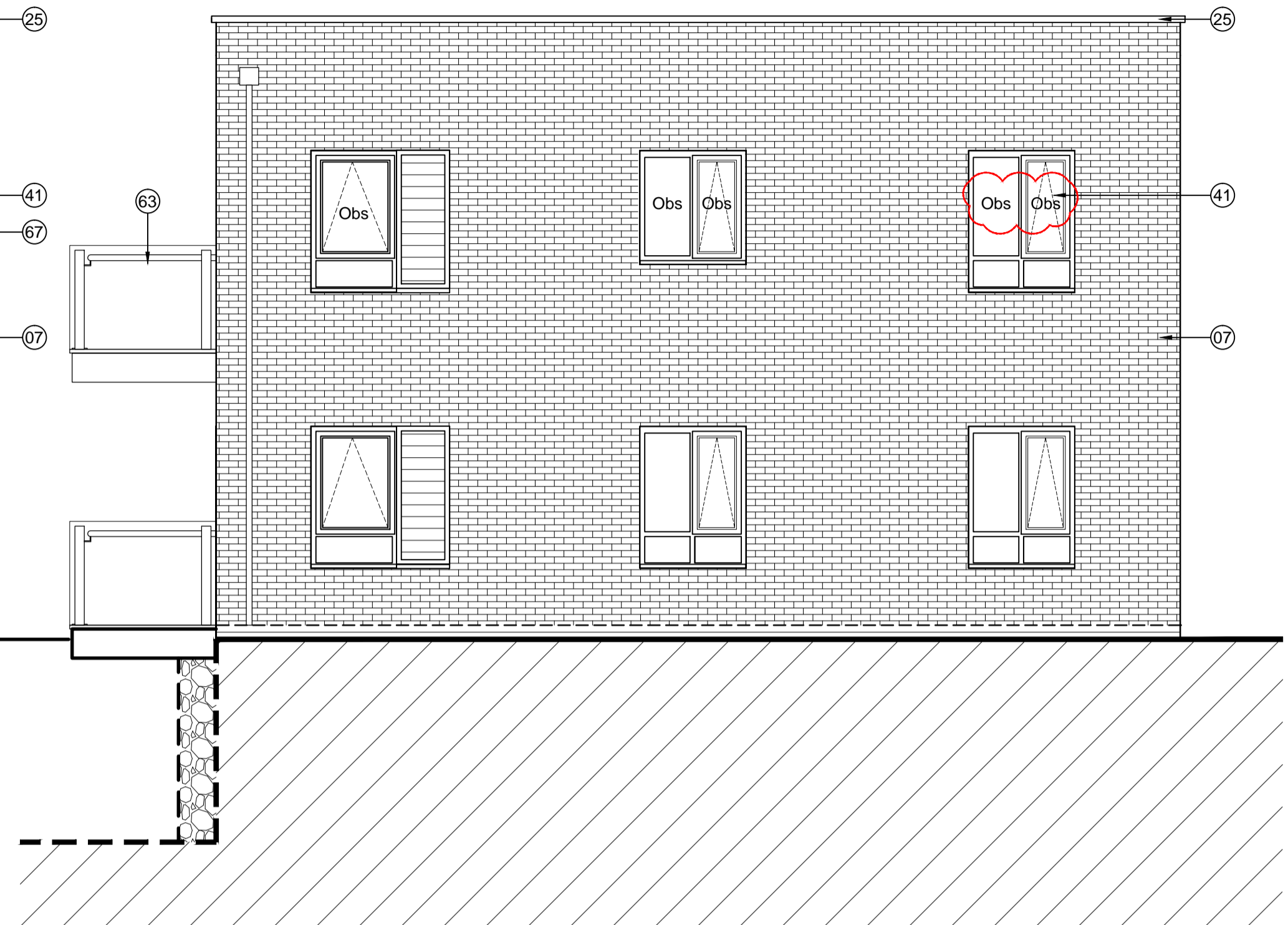
- The contractor is responsible for checking dimensions, tolerances and references. Any discrepancy to be verified with the Architect before proceeding with the works.
- Where an item is covered by drawings to different scales the larger scale drawing is to be worked to.
- Do not scale drawing. Figured dimensions to be worked to in all cases.

CDM Regulations 2007
 ALL current drawings and specifications for the project must be read in conjunction with the Designer's Hazard and Environmental Assessment Record.

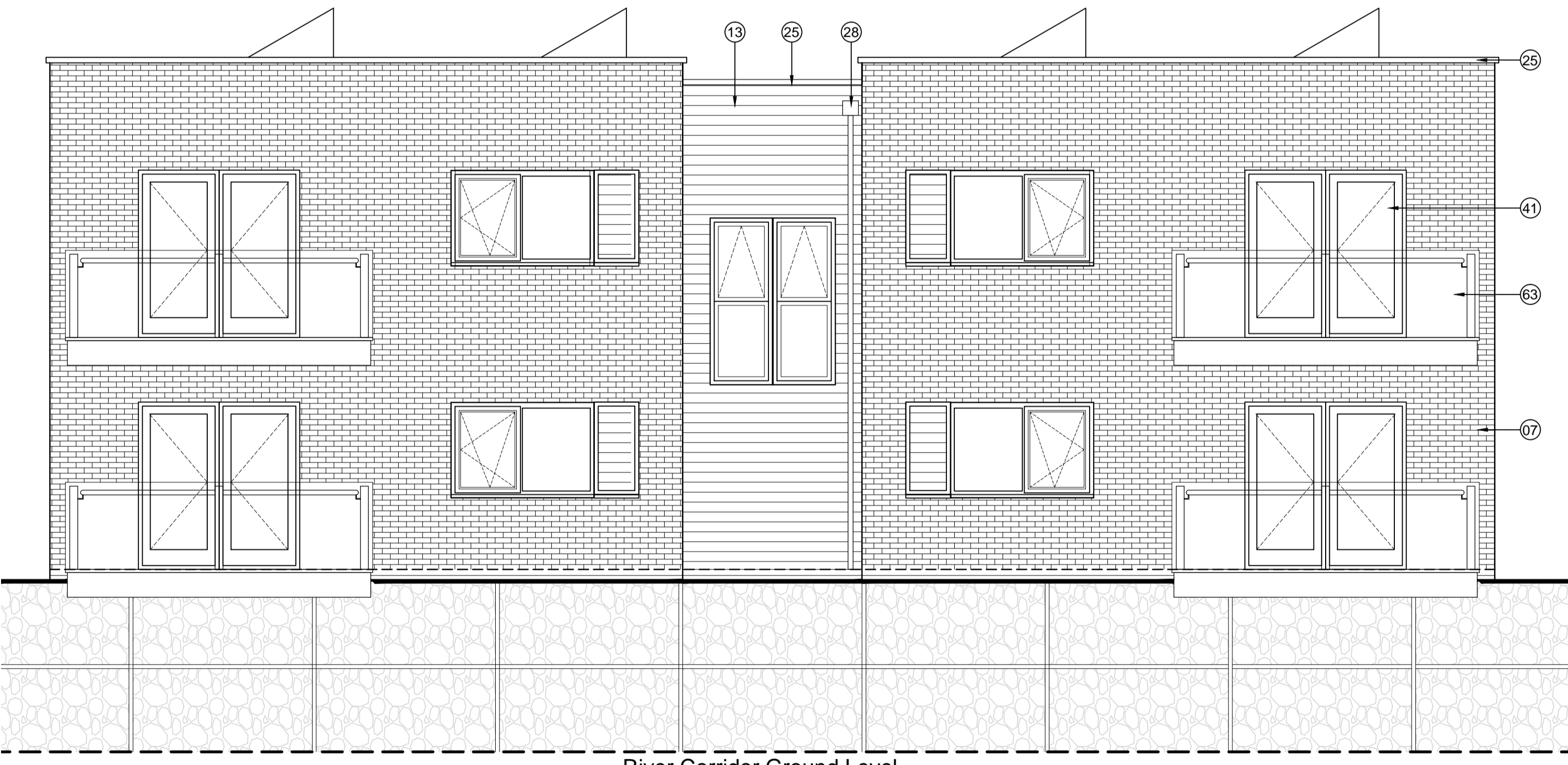
Notes:
 For GA floor plans please refer to drawing AA2699(2)-2025



West Elevation (Front)



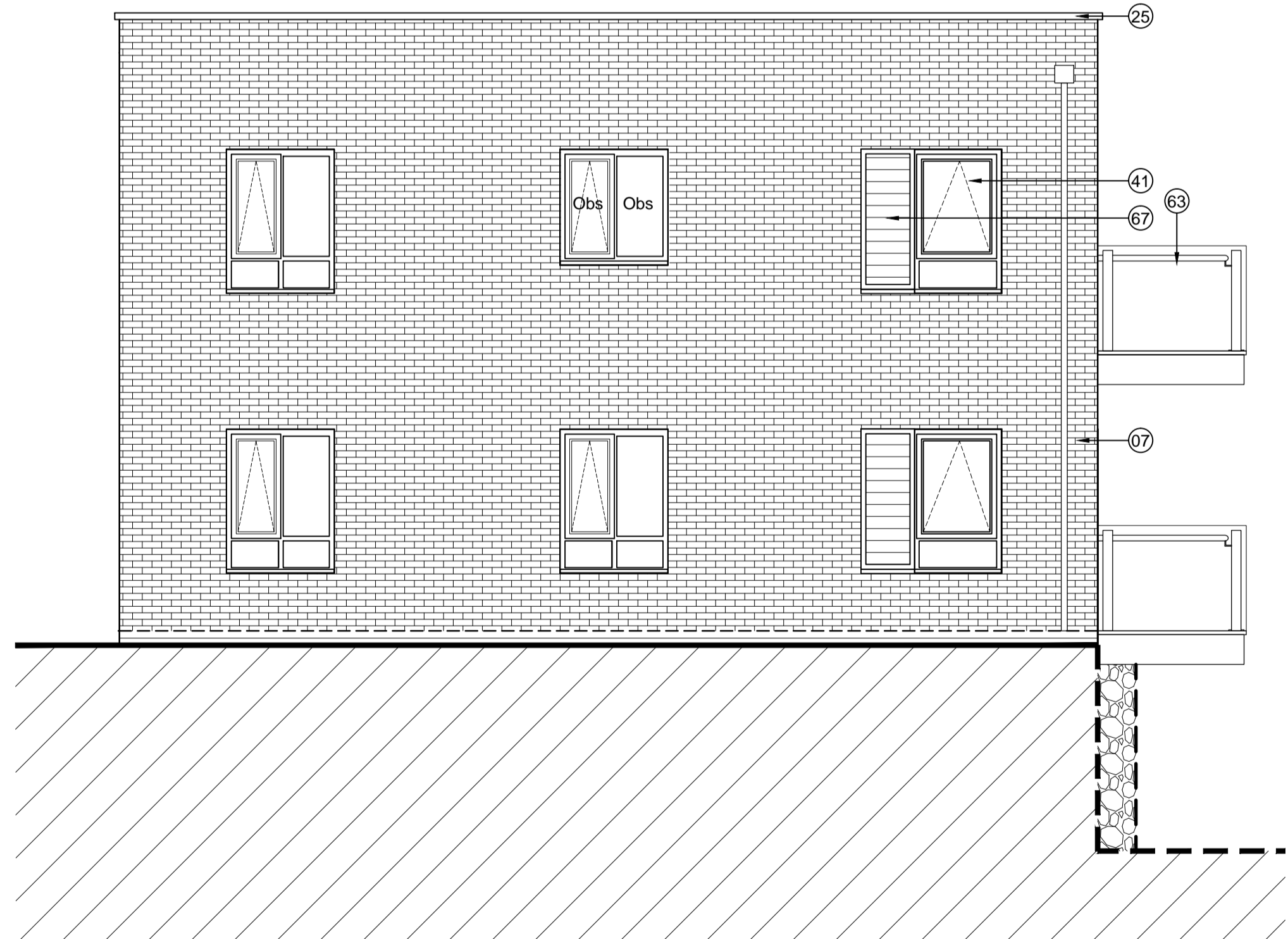
North Elevation (Side 1)



River Corridor Ground Level

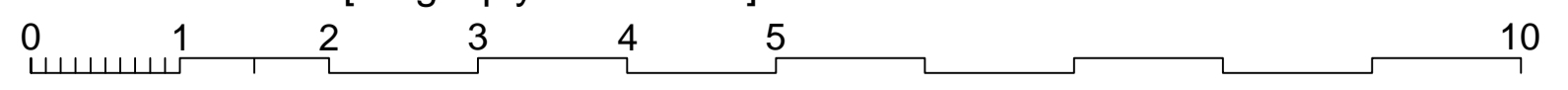
NOTE: River Corridor retaining wall to continue with Gabion treatment along the River Corridor frontage.

East Elevation (Rear, Facing River Corridor)



South Elevation (Side 2)

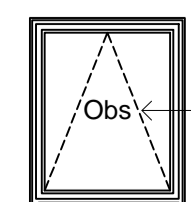
- TYPE - 7
 WALLS - Brick
 ROOF - Flat [Single ply membrane]



Tenure - Affordable Rent

KEY TO MATERIALS & DETAILS

- 07 Face brickwork - Istock 'Capital Multi Stock'; laid stretcher bond with natural colour bucket handle mortar joints.
- 13 Horizontal timber cladding [Thermowood; with natural untreated finish]
- 25 PPC aluminium coping; colour: Grey (RAL 7015)
- 28 Rain water hopper to match black upvc rain water goods
- 41 High performance triple glazed timber window or door; design to match house type; colour: Grey (RAL 7015)
- 51 Louvred doors to refuse and cycle stores; colour: Grey (RAL 7015) to match windows and doors
- 63 Painted cantilevered balconies, colour; Grey (RAL 7015) with toughened glass balustrade & s/steel handrails
- 67 Spandrel Panel: Horizontal timber cladding [Thermowood; with natural untreated finish]



Denotes obscure glazing to bathroom or WC / Shower

- 11-01-2016 B Obscure glass added to north elevation 1st floor, as clouded. Obscure glass omitted from north elevation ground floor. Text amended as clouded. c/r/s
- 10-06-2015 A Second issue: SDT/SW Elevations and material treatment revised to reflect liaison with Local Authority.
- 16-10-2014 - First issue: JWMB

date	rev	revision/author/checker
------	-----	-------------------------

purpose of issue PLANNING	
project BICESTER ECO TOWN EXEMPLAR SITE PHASE 2	
drawing GA ELEVATIONS PLOT 296 - 299	

drawing no AA2699(2)-2125		rev B	
drawn SDT	checked SW	date Oct 2014	
scale @ A1 1:50			

PRP Architects ©
 10 Lindsey Street
 Smithfield
 London
 EC1A 9EP
 T +44 (0)20 7653 1200
 F +44 (0)20 7653 1201
 ion.prp@prparchitects.co.uk