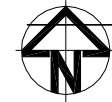


FOR CONTINUATION  
SEE DWG 7239  
MATCH LINE

- GENERAL NOTES
- REFER TO DRAWINGS UA001881 / 7247 TO 7250 FOR SURFACING AND KERBING DETAILS
  - REFER TO DRAWING Nos UA001881 / 7253 TO 7256 FOR DRAINAGE DETAILS



**KEY**

- PROPOSED ADOPTABLE CARRIAGEWAY
- PROPOSED ADOPTABLE FOOTWAY
- PROPOSED COMMUNITY FOOTPATH
- PROPOSED ADOPTABLE VERGE
- PROPOSED ADOPTABLE ROADSIDE SUDS FEATURE
- PROPOSED SUDS/POND FEATURE
- POND MAINTENANCE ACCESS (3.0m Wide)
- PROPOSED COMMUNITY STREET CONNECTION
- GATEWAY FEATURE (DETAIL IN ABEYANCE)
- VISIBILITY SPLAY - CONDITIONED RELATING TO HOUSEHOLD COVENANT
- FOOTWAY VEHICULAR CROSSING
- UNCONTROLLED CROSSING POINT
- 4.0m FORWARD VISIBILITY SPLAY
- 2.4m x 33m VISIBILITY SPLAY
- 2m x 2m VISIBILITY SPLAY
- PROPOSED BOLLARD (REFER TO O.C.C. DRAWING No. HSD/1200/220 FOR DETAILS)
- PROPOSED TREE AND TREE PIT (REFER TO DRAWING Nos. UA001881-701-800 AND 701-801 FOR DETAILS)
- FULLY ENCLOSED 3 BAY PASSENGER SHELTER, DETAILS T.B.C BY OXFORDSHIRE C.C.
- FOOTWAY EDGING
- SUDS FEATURE
- DROP KERB TYPE
- STANDARD KERB 125mm UPSTAND GENERAL
- KASSEL KERB
- FLUSH KERB TYPE
- KERB DRAINAGE BLOCK
- DROPPED KERB DRAINAGE BLOCK

Issue	Description	Date
F	ROAD LAYOUT REVISED	08/06/15
E	BASE PLAN UPDATED	20/03/15
D	NOTES ADDED	17/04/14
C	GENERAL REVISIONS	04/04/14
B	MINOR REVISIONS	11/03/14
A	CONSTRUCTION ISSUE	09/08/13
14	ROAD CROSSING ADDED AT CH. 631	17/05/13
13	TREE LAYOUT REVISED	25/03/13
12	HIGHWAY BOUNDARY REVISED	06/11/12
11	SPINE ROAD TREE LAYOUT REVISED	26/10/12
10	GENERAL REVISIONS	18/10/12
09	MASTERPLAN REVISED	05/10/12
08	FOOTPATHS REVISED	07/09/12
07	MINOR REVISIONS	11/07/12
06	REVISED TO OCC COMMENTS	MAR 12
05	CARRIAGEWAY WIDTHS & BUS STOPS REVISED	02 DEC 11
04	FUTURE BUS STOP AND SPEED TABLE ADDED	04 NOV 11

Status	<b>FOR CONSTRUCTION</b>	
Scales	1:500	Author: M LLEWELIN
Original Size	A1	Checker: S.A.DAVIES
Height Datum	O.S.	Approver: S.A.DAVIES
Grid	O.S.	Copyright reserved

Filename: 240-UA001881-UP210-538-F-GENERAL ARRANGEMENT.DWG

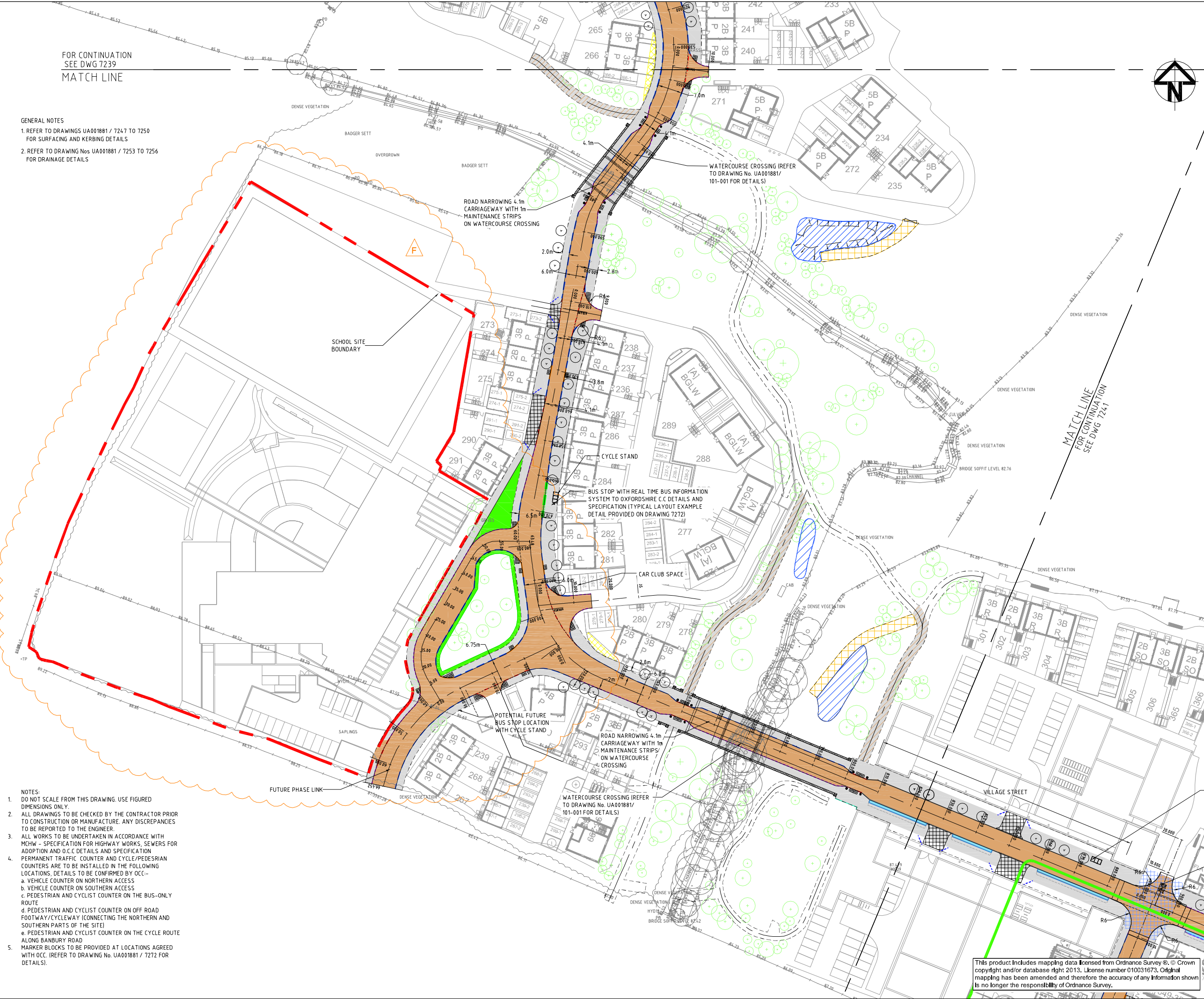


**Hyder Consulting (UK) Limited**  
 HCL House  
 St. Mellons Business Park  
 Forran Road, St Mellons  
 Cardiff  
 CF3 0EY  
 Tel: +44 029 20926700  
 Fax: +44 029 20925222

Project  
**BICESTER ECO DEVELOPMENT EXEMPLAR SITE**

Title  
**SPINE ROAD (S38) GENERAL ARRANGEMENT SHEET 3 OF 4**

Drawing No.	Project No.	Issue
7240	UA001881	F



- NOTES:
- DO NOT SCALE FROM THIS DRAWING. USE FIGURED DIMENSIONS ONLY.
  - ALL DRAWINGS TO BE CHECKED BY THE CONTRACTOR PRIOR TO CONSTRUCTION OR MANUFACTURE. ANY DISCREPANCIES TO BE REPORTED TO THE ENGINEER.
  - ALL WORKS TO BE UNDERTAKEN IN ACCORDANCE WITH MCHW - SPECIFICATION FOR HIGHWAY WORKS, SEWERS FOR ADOPTION AND O.C.C. DETAILS AND SPECIFICATION PERMANENT TRAFFIC COUNTER AND CYCLE/PEDESTRIAN COUNTERS ARE TO BE INSTALLED IN THE FOLLOWING LOCATIONS. DETAILS TO BE CONFIRMED BY OCC:
    - VEHICLE COUNTER ON NORTHERN ACCESS
    - VEHICLE COUNTER ON SOUTHERN ACCESS
    - PEDESTRIAN AND CYCLIST COUNTER ON THE BUS-ONLY ROUTE
    - PEDESTRIAN AND CYCLIST COUNTER ON OFF ROAD FOOTWAY/CYCLEWAY (CONNECTING THE NORTHERN AND SOUTHERN PARTS OF THE SITE)
    - PEDESTRIAN AND CYCLIST COUNTER ON THE CYCLE ROUTE ALONG BANBURY ROAD
  - MARKER BLOCKS TO BE PROVIDED AT LOCATIONS AGREED WITH OCC. (REFER TO DRAWING No. UA001881 / 7272 FOR DETAILS).

This product includes mapping data licensed from Ordnance Survey ©. Crown copyright and/or database right 2013. License number 010031673. Original mapping has been amended and therefore the accuracy of any information shown is no longer the responsibility of Ordnance Survey.

CAD FILE: K:\UA001881\_BicesterEco\Engineering\240-UA001881-UP210-538-F-GENERAL ARRANGEMENT.dwg  
 PRINTED BY: PW68098 - JUNE/08/2015 - 2:47PM  
 UPDATED BY: PW68098 - JUNE/08/2015 - 3:00PM