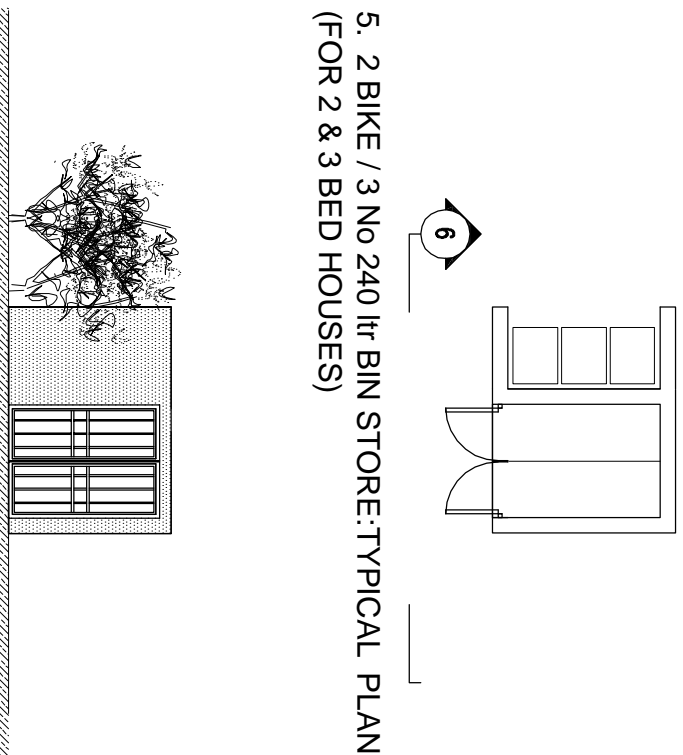


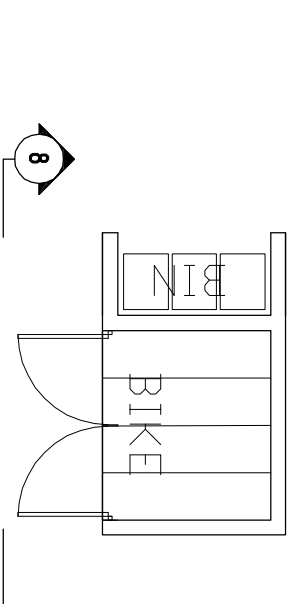
1, 4 GARAGE GROUP: TYPICAL ELEVATION

2, 3 GARAGE GROUP: TYPICAL ELEVATION

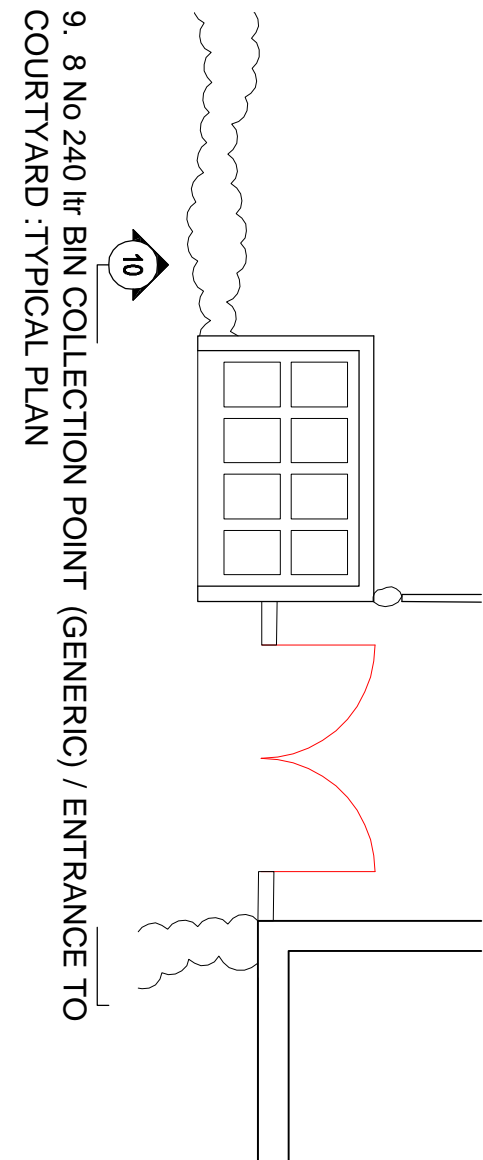


5, 2 BIKE / 3 NO 240 W BIN STORE: TYPICAL PLAN (FOR 2 & 3 BED HOUSES)

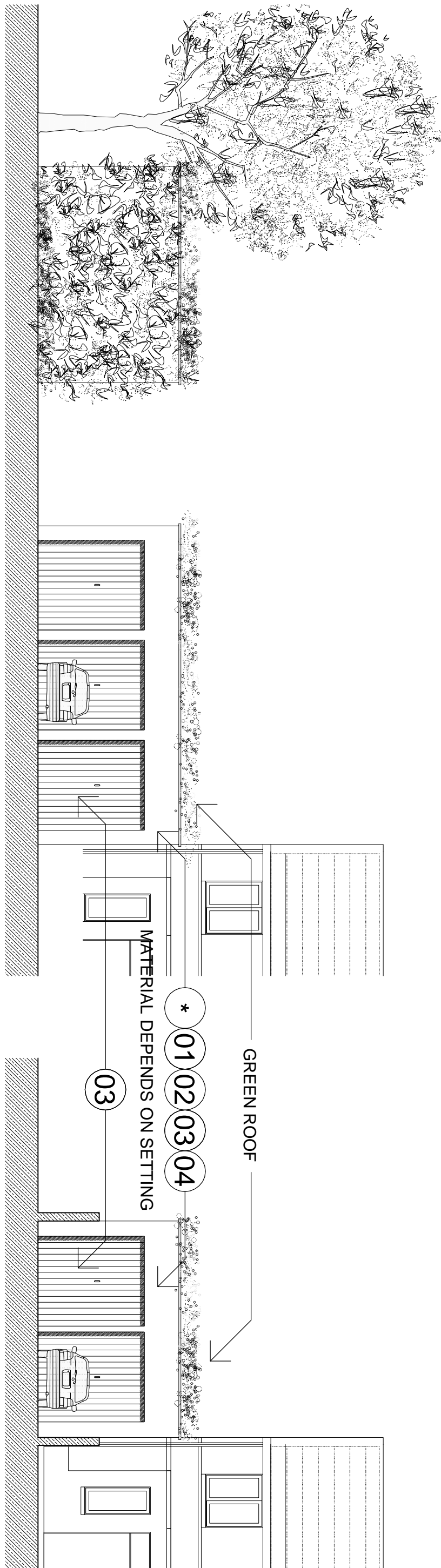
6, 2 BIKE / 3 NO 240 W BIN STORE: TYPICAL ELEVATION (FOR 2 & 3 BED HOUSES)



7, 4 BIKE / 3 NO 240 W BIN STORE: TYPICAL PLAN (FOR 4 & 5 BED HOUSES)

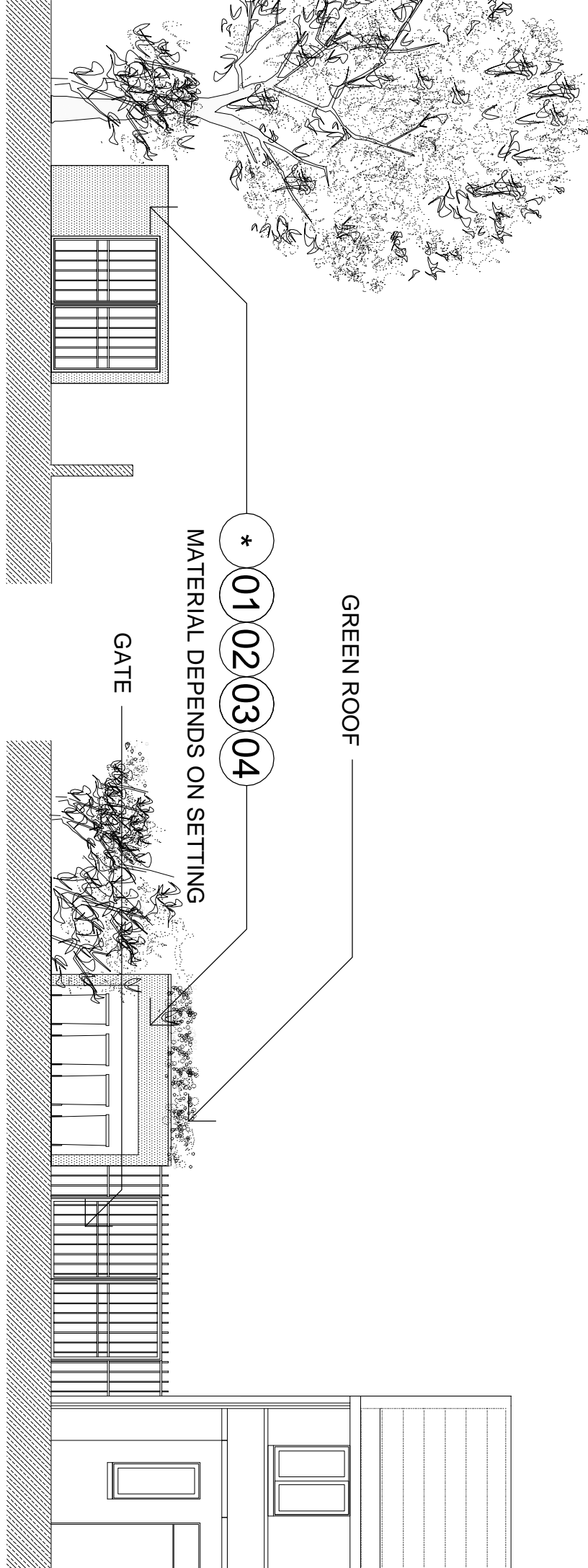


8, 8 NO 240 W BIN COLLECTION POINT (GENERIC) / ENTRANCE TO COURTYARD: TYPICAL PLAN

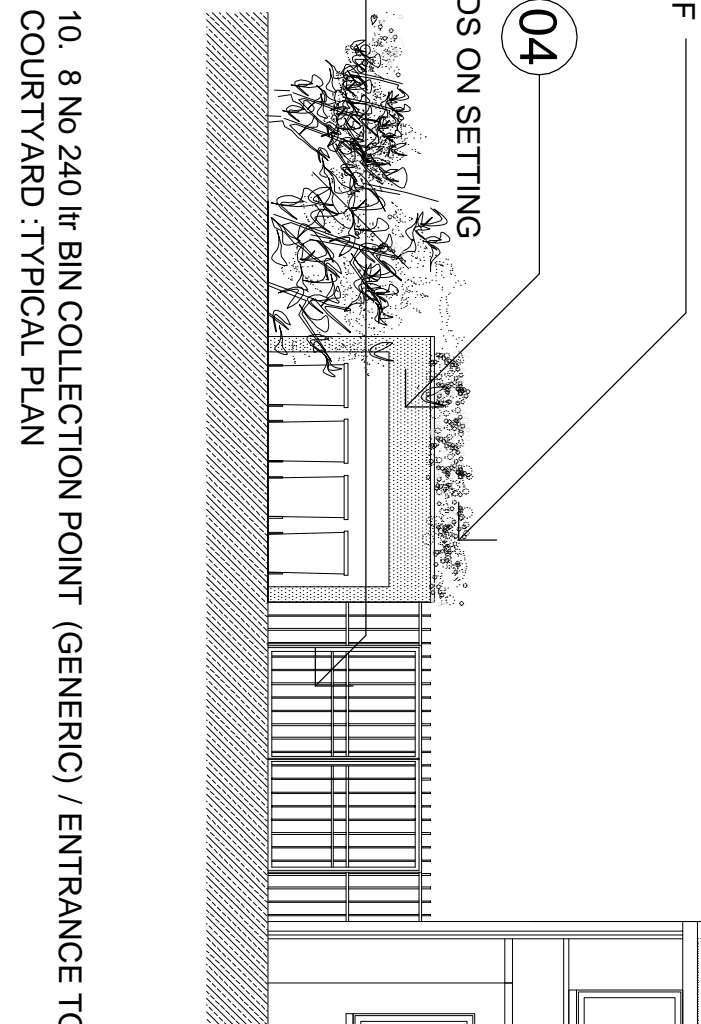


3, HOME ZONE GARAGE GROUP: TYPICAL ELEVATION

4, 2 GARAGE GROUP: TYPICAL ELEVATION



8, 4 BIKE / 3 NO 240 W BIN STORE: TYPICAL ELEVATION (FOR 4 & 5 BED HOUSES)



10, 8 NO 240 W BIN COLLECTION POINT (GENERIC) / ENTRANCE TO COURTYARD: TYPICAL PLAN

LEGEND

- 01 STONE
- 02 BRICK
- 03 TIMBER
- 04 TEXTURE RENDER
- 05 TRIPLE GLAZED WINDOWS (timber frame)
- 06 SLATE ROOF TILE
- 07 PV CELLS (to south facing roof)
- 08 CONCRETE FEATURE BAND
- 09 STUCCO RENDER PLINTH
- 10 DOWN PIPE
- 11 PPC METAL CANOPY
- * VARIABLE MATERIAL (SEE MATERIALS KEY PLAN)

A2 Dominion / P3 Eco

BMP2_PA_05_200 REV B

SCALE 1:100@A1
6TH APRIL 2011

NW BICESTER EXEMPLAR DEVELOPMENT

Typical garage elevations, and bike & bin elevations

FARRELLS

ARCHITECTS • PLANNING • DESIGNERS • 7 NORTH STREET LONDON NW6 8LJ
TEL: 020 72634243 • FAX: 020 77231039 • WWW.FARRELLS.CO.UK
© FARRELLS 2010