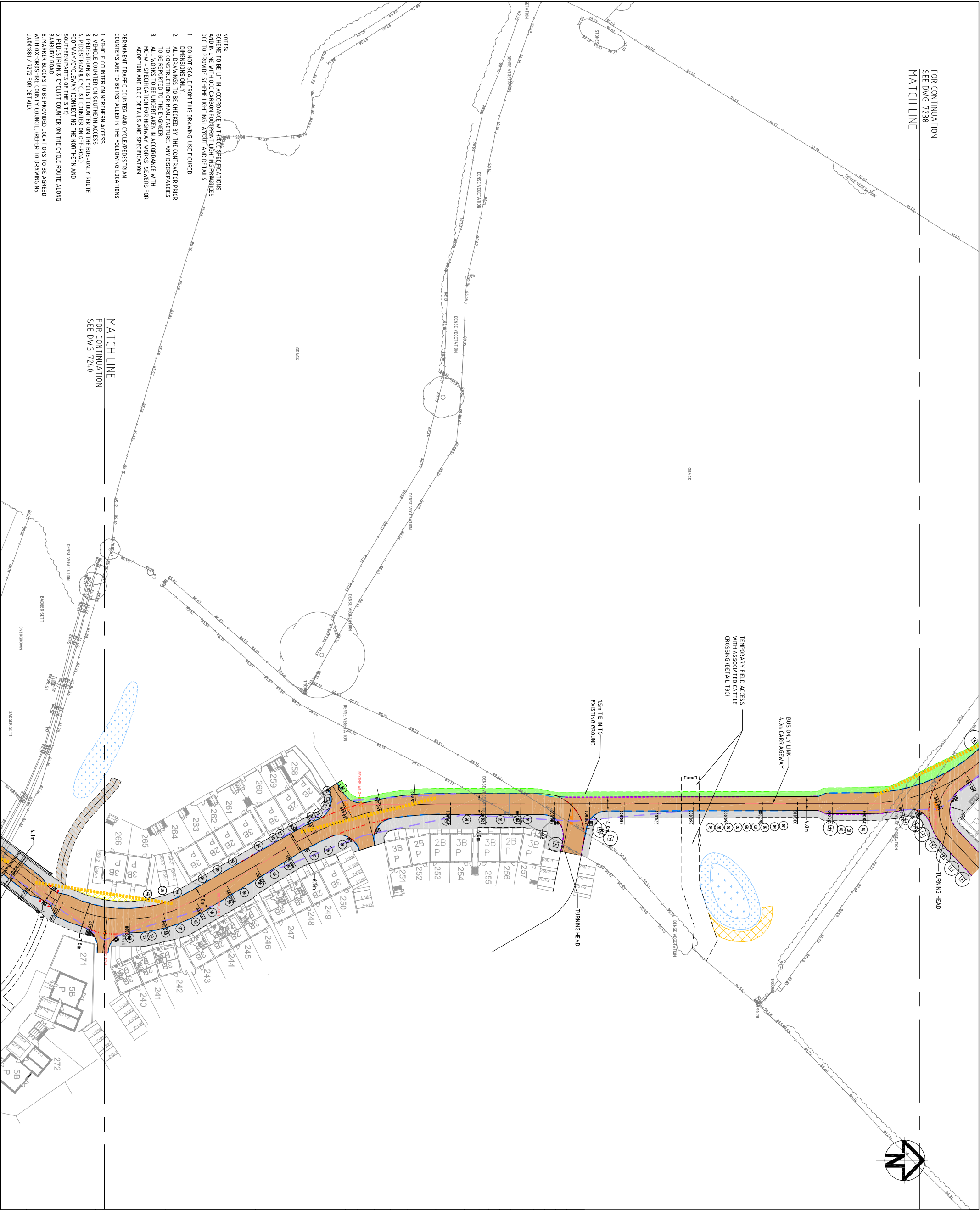


FOR CONTINUATION
 SEE DWG 7238
 MATCH LINE

MATCH LINE
 FOR CONTINUATION
 SEE DWG 7240

- NOTES:
 SCHEME TO BE LIT IN ACCORDANCE WITH THE SPECIFICATIONS AND IN LINE WITH OCC CARBON FOOTPRINT LIGHTING PRACTICES OCC TO PROVIDE SCHEME LIGHTING LAYOUT AND DETAILS
- DO NOT SCALE FROM THIS DRAWING. USE FIGURED DIMENSIONS ONLY.
 - ALL DRAWINGS TO BE CHECKED BY THE CONTRACTOR PRIOR TO CONSTRUCTION OR MANUFACTURE. ANY DISCREPANCIES TO BE REPORTED TO THE ENGINEER.
 - ALL WORKS TO BE UNDERTAKEN IN ACCORDANCE WITH HIGHWAY SPECIFICATION FOR HIGHWAY WORKS, SEWERS FOR ADOPTION AND OCC DETAILS AND SPECIFICATION.
- PERMANENT TRAFFIC COUNTER AND CYCLE/PEDESTRIAN COUNTERS ARE TO BE INSTALLED IN THE FOLLOWING LOCATIONS
- VEHICLE COUNTER ON NORTHERN ACCESS
 - VEHICLE COUNTER ON SOUTHERN ACCESS
 - PEDESTRIAN & CYCLIST COUNTER ON THE BUS-ONLY ROUTE
 - PEDESTRIAN & CYCLIST COUNTER ON OFF-ROAD FOOTWAY/CYCLEWAY (CONNECTING THE NORTHERN AND SOUTHERN PARTS OF THE SITE)
 - PEDESTRIAN & CYCLIST COUNTER ON THE CYCLE ROUTE ALONG BANBURY ROAD
 - HARKER BLOCKS TO BE PROVIDED LOCATIONS TO BE AGREED WITH OXFORDSHIRE COUNTY COUNCIL. REFER TO DRAWING NO. UA001881 / 7242 FOR DETAIL.



KEY

- PROPOSED ADOPTABLE CARRIAGEWAY
- PROPOSED ADOPTABLE FOOTWAY
- PROPOSED ADOPTABLE FOOTWAY/CYCLEWAY
- PROPOSED ADOPTABLE VERGE
- PROPOSED ADOPTABLE ROADSIDE SUDS FEATURE
- PROPOSED SUDS/POND FEATURE
- POND MAINTENANCE ACCESS (3.0m wide)
- PROPOSED COMMUNITY STREET CONNECTION
- GATEWAY FEATURE (DETAIL IN ABEYANCE)
- VISIBILITY SLAY - CONDITIONED RELATING TO HOUSEHOLD COVENANT
- UNCONTROLLED CROSSING POINT
- 4.0m FORWARD VISIBILITY SPLAY
- 2.4m x 3.0m VISIBILITY SPLAY
- 2m x 2m VISIBILITY SPLAY
- PROPOSED BOLLARD
- PROPOSED TREE AND TREE PIT (REFER TO DRAWING NO. UA001881-707-018 FOR DETAILS)
- FULLY ENCLOSED 3 BAY PASSENGER SHELTER, DETAILS T.B.C BY OXFORDSHIRE C.C.

Issue	Description	Date
12	HIGHWAY BOUNDARY REVISED	06/11/12
11	SPINE ROAD TREE LAYOUT REVISED	26/10/12
10	GENERAL REVISIONS	18/10/12
09	MASTERPLAN REVISED	05/10/12
08	CATTLE CROSSING NOTE AMENDED	07/09/12
07	MINOR REVISIONS	11/07/12
06	REVISED TO OCC COMMENTS	MAR 12
05	CARRIAGEWAY WIDTHS & BUS STOPS REVISED	02 Dec 11
04	FUTURE BUS STOP AND SPEED TABLE ADDED	04 NOV 11

Status: **DRAFT**

Scales: 1:500

Original Size: A1
 Height: 0.5
 Datum: 0.5

Grid: 0.5

Author: MELLEWELLIN
 Checker: S.A.DAVIES
 Approver: S.A.DAVIES

Copyright reserved

Client: Filemp238-7241-UA001881-UP21D-S38-12-GENERAL ARRANGEMENT.DWG



Hyder Consulting (UK) Limited
 29 Bressenden Place
 London
 SW1E 5DZ

Tel: +44 (0)870 000 3006
 Fax: +44 (0)870 000 3005

Project: BICESTER ECO
 DEVELOPMENT EXEMPLAR SITE

Title: SPINE ROAD (S38)
 GENERAL ARRANGEMENT
 SHEET 2 OF 4

Drawing No: 7239
 Project No: UA001881
 Issue: 12