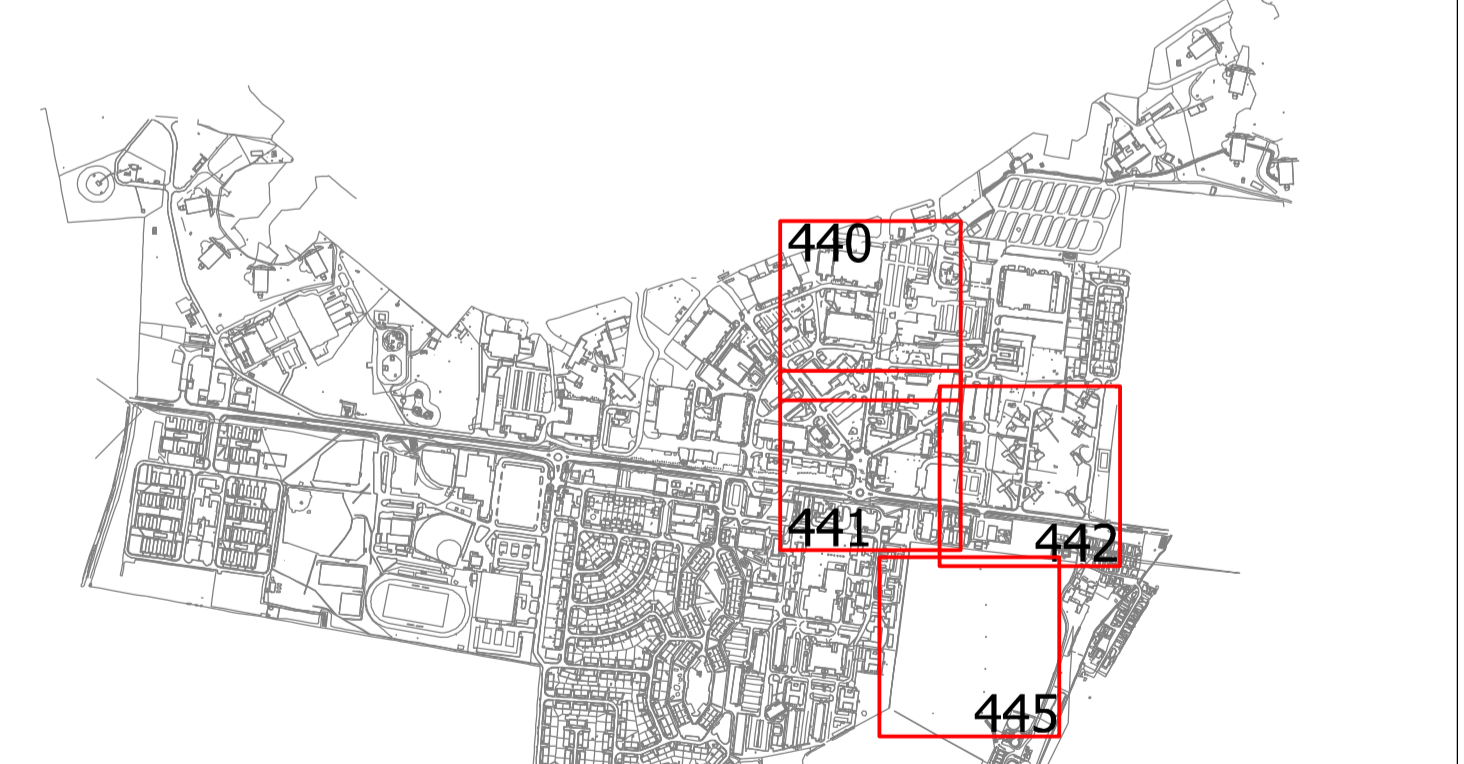


- Contractors must check all dimensions on site. Only figured dimensions are to be worked from. Discrepancies must be reported to the Architect or Engineer before proceeding. © This drawing is copyright.
- Reproduced from OS Sitemap @ by permission of Ordnance Survey @ on behalf of The Controller of Her Majesty's Stationary Office. © Crown copyright 2008. All rights reserved. Licence number 100007126.
- Existing drainage invert level, cover level and pipe sizes taken from survey information. Not all drainage connections have been proven and some invert levels are marked as assumed.
- Further survey may be required to locate pipes.
- Pipe lengths to be abandoned to be CCTV'd to ensure no further saddle connections/buried manholes are adversely affected.
- Cover levels through the proposed development are subject to detailed design and may change from that shown.
- Contractor to confirm all ILS prior to commencement including upstream and downstream MHs.
- Refer to drawing HEYF/5/440, HEYF/5/441 and HEYF/5/442 for continuation of drainage.
- Refer to drawing HEYF/5/443 for MH schedule.
- Surface water storage tanks to be constructed from 1m x 0.4 x 0.5m Aquacell core units by Wavin or similar approved. Min cover without concrete protection is 0.6m in trafficked areas and 0.3m in soft landscaped areas.

- Proposed surface water drainage diversion and enabling works with manhole reference, cover level, invert level, pipe size and gradient
- Existing surface water drainage with manhole reference, cover level, invert level and pipe size
- Proposed residential development surface water drainage with manhole reference, cover level, invert level and pipe size
- Proposed foul water drainage diversion and new runs with manhole reference, cover level, invert level, pipe size and gradient
- Existing foul water drainage with manhole reference, cover level, invert level and pipe size
- Proposed residential development foul water drainage with manhole reference, cover level, invert level and pipe size
- Existing drainage to be abandoned. Pipes and manholes to be grubbed up
- 175mm thick concrete slab over adoptable drainage that has less than 1.2m cover
- Areas of lined porous paving (part of on-plot works)



Revision	Description	Drawn	Checked	Date
F	Drainage protection strip added within farmer's field	AT	JF	31.03.14
E	Foul realigned and volume of material required in farmer's field added	AT	JF	07.03.14
D	Gradient of regrade in farmer's field amended from 1:4 to 1:20	AT	JF	28.02.14
C	Foul cover levels in field amended	AT	JF	24.02.14
B	Drawing title amended	AT	JF	18.02.14
A	F43a added	AT	JF	01.11.13

Preliminary  Information  Tender  Construction  As Built

### Woods Hardwick

Architects, Engineers and Development Consultants

15-17 Goldington Road Bedford MK40 3NH United Kingdom T: +44 (0)1234 268862 F: +44 (0)1234 353034 mail@woodshardwick.com www.woodshardwick.com

Title: UPPER HEYFORD

Details: EASTERN FLYING FIELD DIVERSION SCHEME A  
GENERAL ARRANGEMENT (SHEET 4 OF 4)

Scale: N/A @ A1 Date: AUGUST 2013 Drawn: AT Chk: JF

Please consider the environment before printing this drawing

