

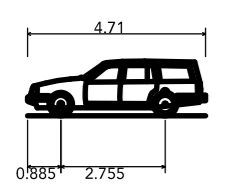
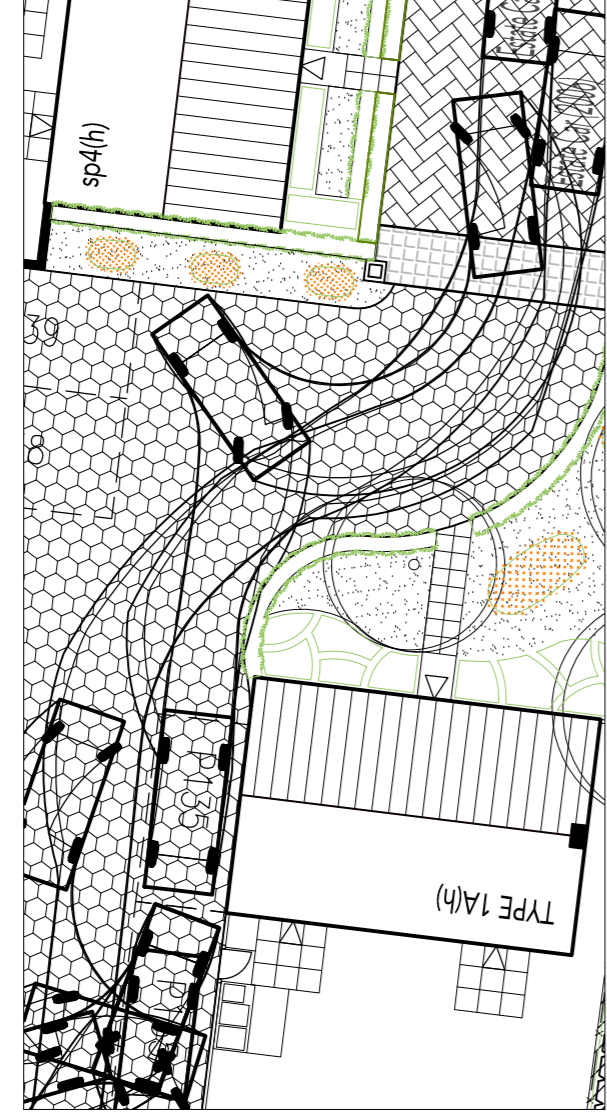
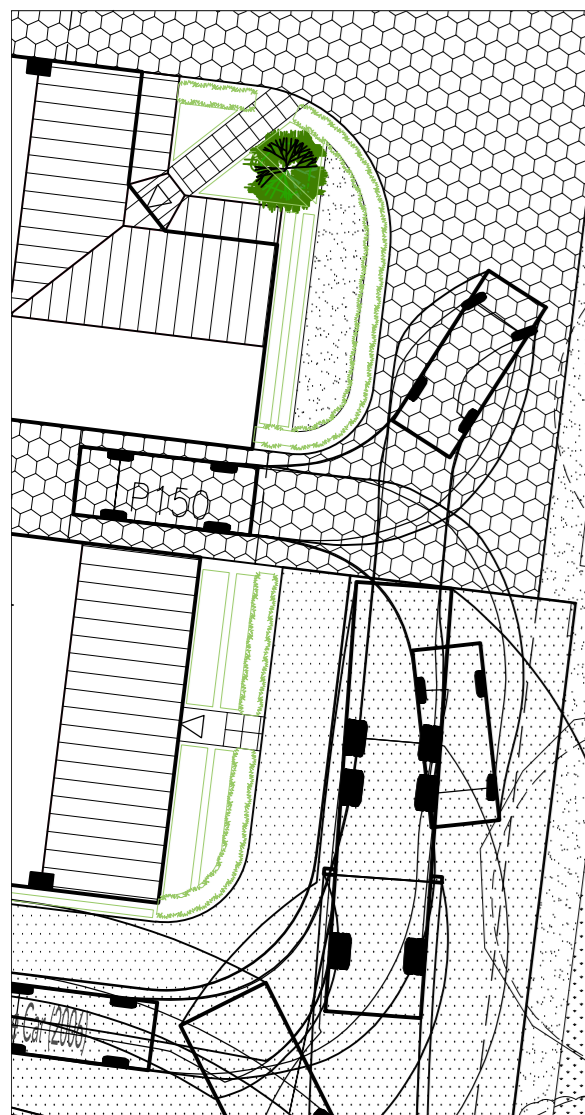
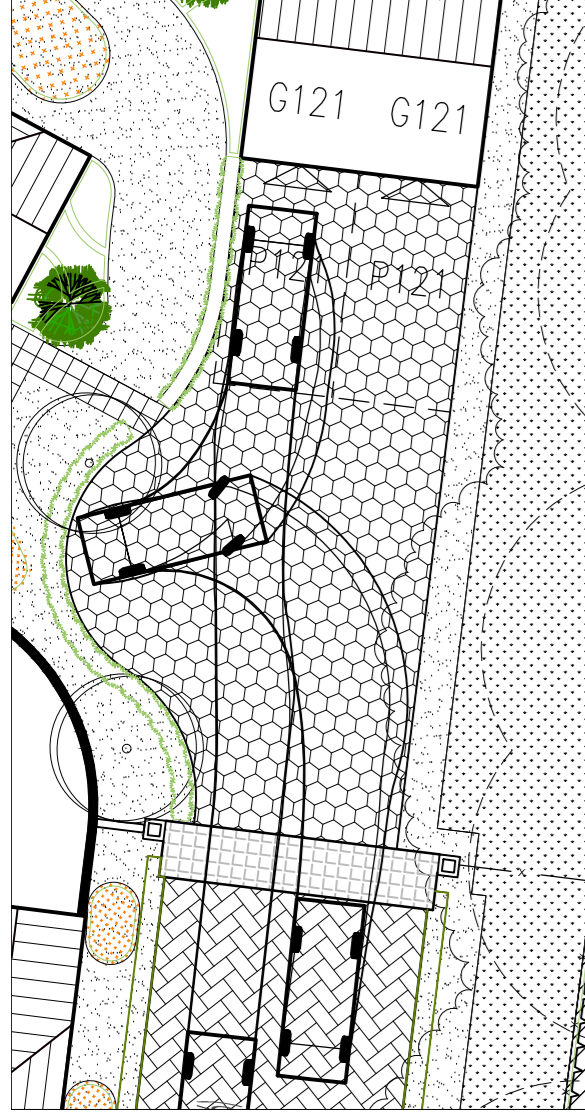
PHASE 3, HEYFORD PARK, UPPER HEYFORD, BICESTER

This drawing is the copyright of Focus On Design which is a trading name for Focus Design Partnership Limited. No liability will be accepted for amendments by others to either the printed or digital format.

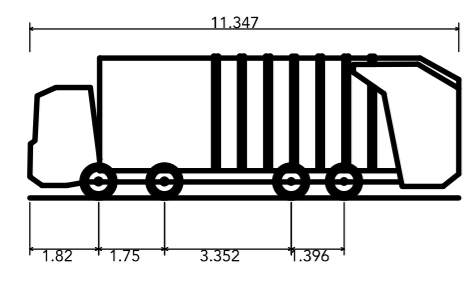


REVISIONS:

- A. 2014-10-20. Layout amended following changes made to the planning layout REV A. SRS
- B. 2014-10-29. Layout amended following changes made to the planning layout REV B. SRS
- C. 2011-11-23. Layout amended following changes made to the planning layout REV C. SRS
- D. 2014-12-05. Plots 122, 133-135, and 154 repositioned to avoid existing trees at Tree Officer's request. DJE
- E. 2015-01-09. Title amended to Phase 3 from Phase 2 at clients request. AJA
- F. 2015-01-23. Bay window removed from HT 4A at client's request. DJE
- G. 2015-02-24. Layout amended following changes made to the planning layout REV I. SRS
- H. 2015-03-25. Garages for plots 137, 143 & 144 relocated & road layout in front of plots 142-144 amended, following client's comments. SRS
- I. 2015-08-21. Boundary amendments to plots 122, 133 and 134 as per clients request. AJA
- J. 2016-02-18. Landscaping updated to front of Plots 118, 125 + 141. Brick piers, rumble strip and low screen wall to Plot 121 adjusted to match as built survey received 2016.02.17, landscaping adjusted to suit. EMB
- K. 2016-02-26. Buildouts repositioned and on-street parking spaces amended along the road west of the site. Position of the piers to the side of Plot 123 adjusted, the buildouts and visitor bays by plots 114 - 116 removed at client's request. Vehicle tracking unaffected. PVA
- L. 2016-03-10. Buildouts by Plots 114-117 added. Road alignments by Plots 130 and 148 amended. All to suit latest Woods Hardwicke scheme. DJE
- M. 2016-03-24. tree and grille adjacent to plot 139 removed. DNB



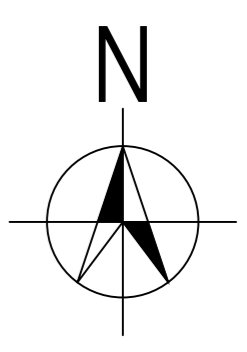
Estate Car (2006)	
Overall Length	4.710m
Overall Width	1.804m
Overall Body Height	1.442m
Min Body Ground Clearance	0.207m
Max Track Width	1.756m
Lock-to-lock time	4.00s
Curb to Curb Turning Radius	5.950m



Large Refuse Vehicle (4 axle)	
Overall Length	11.347m
Overall Width	2.500m
Overall Body Height	3.751m
Min Body Ground Clearance	0.304m
Track Width	2.500m
Lock-to-lock time	6.00s
Wall to Wall Turning Radius	11.330m

VEHICLE TRACKING LAYOUT

SCALE: 1:200 @ A1
 DATE: AUGUST 2014
 DRAWING TITLE: VEHICLE TRACKING LAYOUT
 DRAWN: SRS
 DRAWING NO: 0521-105



SCALE: 1:500
 0 5 10 (m)



THE OLD BREWERY, LODWAY, PILL, BRISTOL BS20 0DH
 t:01275 813380 f:01275 813381 e:admin@focusdp.com