

LEGEND

Planning application boundary

Height in meters AOD

- 60 - 70m
- 70 - 80m
- 80 - 90m
- 90 - 100m
- 100 - 110m
- 110 - 120m
- 120 - 130m
- 140 - 150m
- 150 - 160m

Woodland 15m

Plan L1

E	Amendment to red line boundary	LT	JC	JC	30.8.07
D	Amendment to drawing title	LT	JC	JC	20.8.07
C	Amendments to red line boundary	LT	JC	JC	18.8.07
B	Planning application boundary revised	IG	JC	JC	02/07/07
A	Amendments to Application boundary	LT	ST	JC	20/07/07

COOPER PARTNERSHIP

1802 / 01E
LANDSCAPE
TOVNSCAPE
ENVIRONMENT

Heyford Park

TOPOGRAPHY

As Shown SH July 06ND JC

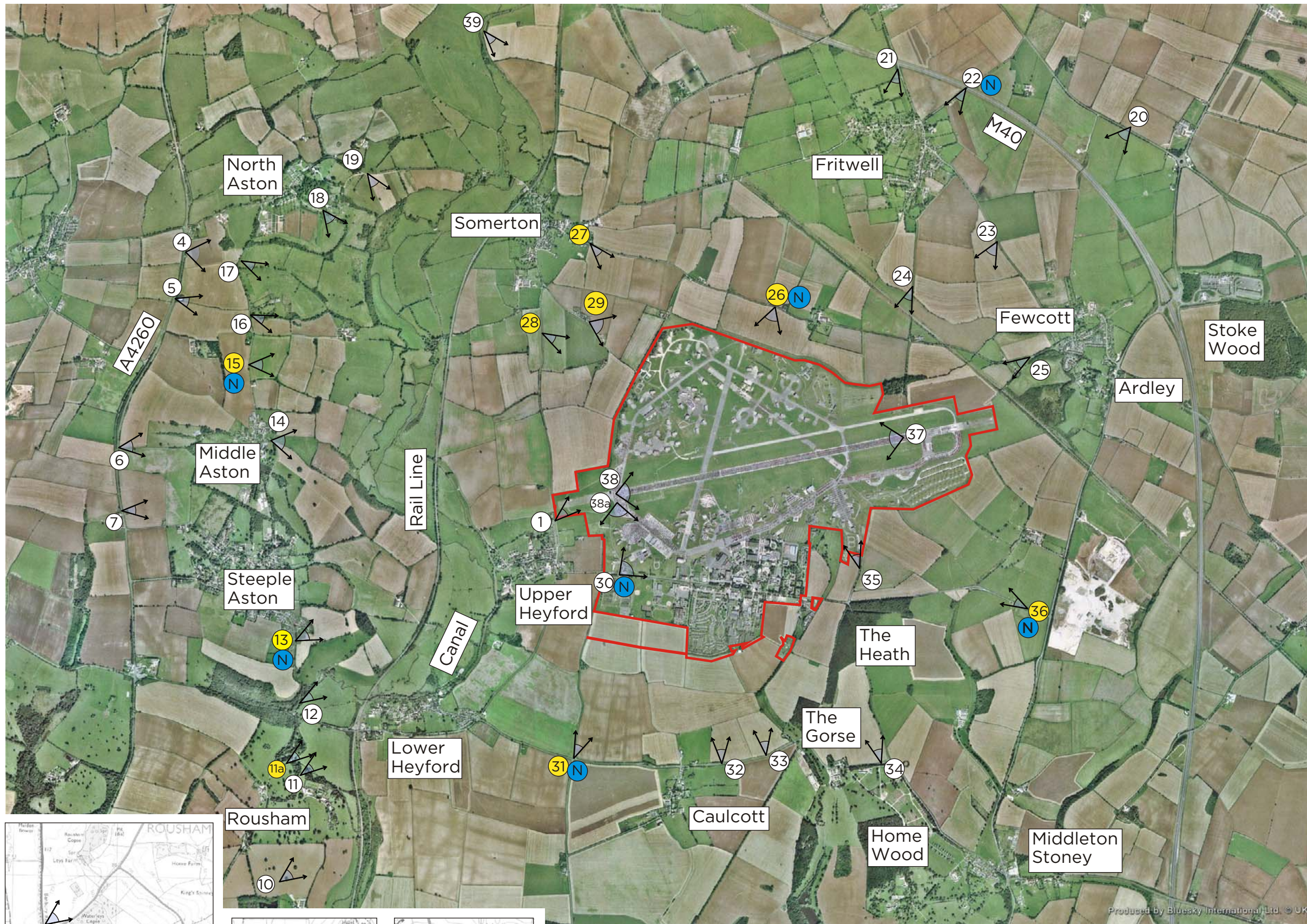
© Crown copyright. All rights reserved.
Licence number 100008366

Scale







1802 / 01E
LANDSCAPE
TOVNSCAPE
ENVIRONMENT

Do not scale this drawing.
All dimensions to be checked on site.



LEGEND

-  Planning application boundary
-  Photographic viewpoints
-  Photographic and photomontage viewpoints
-  Night time photographs

Note:
1. Photographic Viewpoints 2, 3, 8 & 9 are located outside of the aerial coverage. Their locations can be viewed in relation to the site on Plan L7.

Plan L2

F	Amendments to red line boundary	LT	JC	JC	30/08/07
E	Minor amendments	LT	JC	JC	20/08/07
D	Minor amendments	LT	JC	JC	17/08/07
C	Planning application boundary revised	LT	JC	JC	16/08/07
B	Planning application boundary revised	IG	JC	JC	02/07/07
A	amendments to viewpoint numbers, application boundary & additional viewpoints added	LT	JC	JC	23/7/07

COOPER PARTNERSHIP

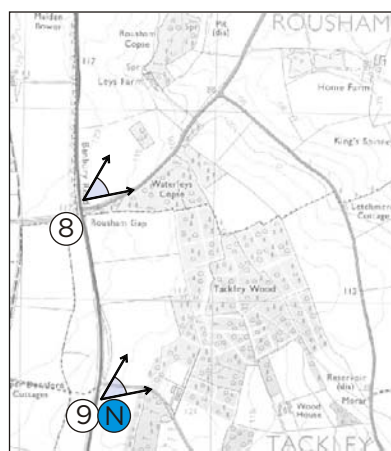
T 0117 946 7488
F 0117 946 7478
mail@cooperpartnership.com
www.cooperpartnership.com

Job
Heyford Park

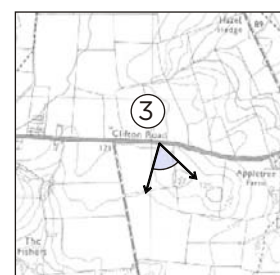
Title
AERIAL PHOTOGRAPH AND PHOTOGRAPH LOCATIONS

Scale	Date	Drawn	Checked	Approved
As shown	July 06	SH	ND	JC

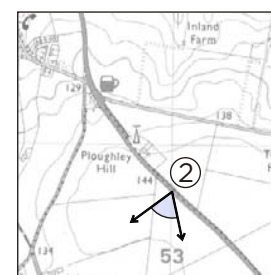
Drawing no
1802/02F



Further south on A4260



NNW of airbase between Deddington and Clifton



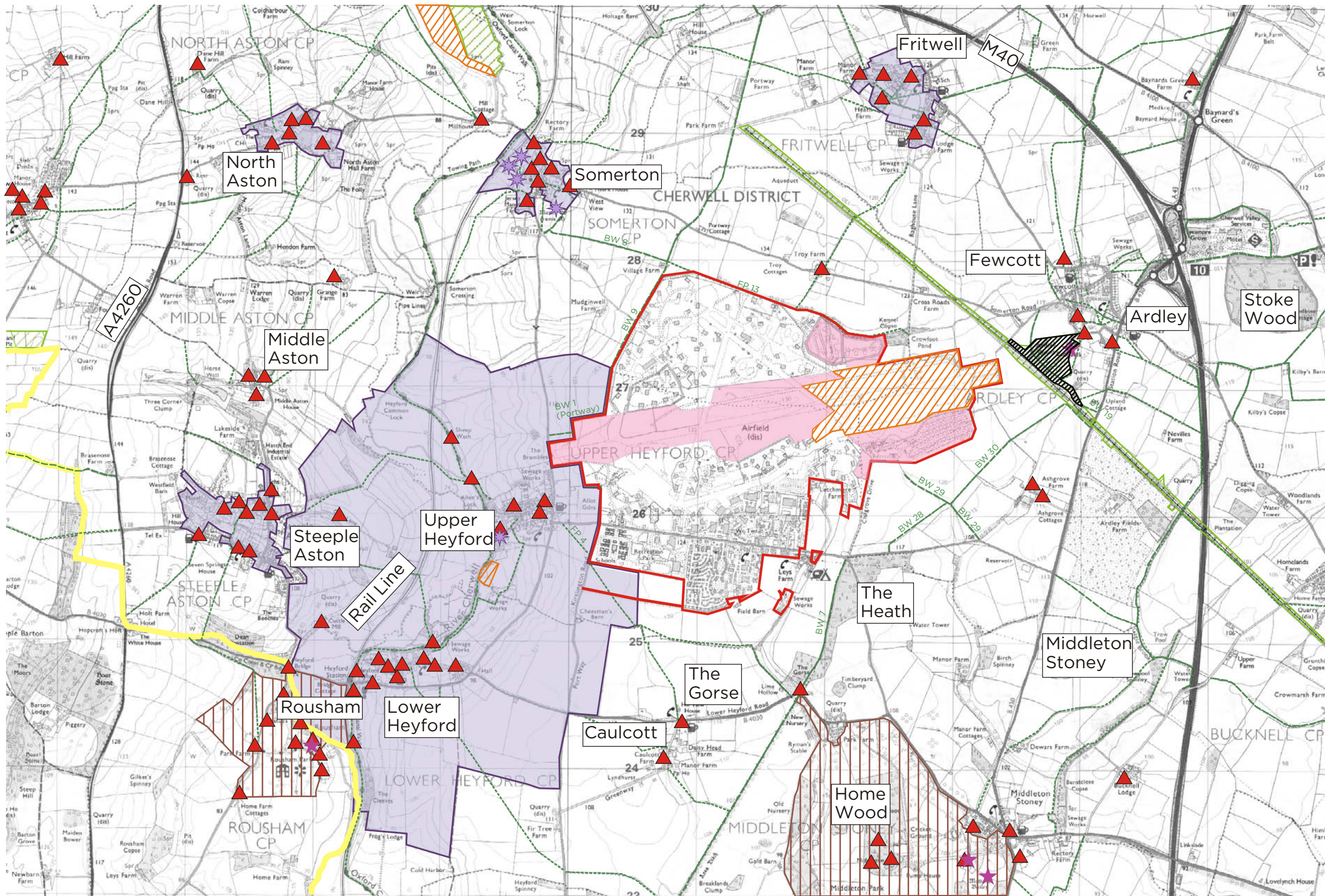
NNE of airbase on B4100

This image is an extract from The Millennium Map™ which is © getmapping.com plc - photography provided by Bluesky International Limited


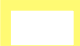





Scale



Produced by Bluesky International Ltd © UKP



LEGEND

-  Planning application boundary
-  Local Authority boundary
-  Conservation area (note 1)
-  Ecologically Important Landscape (note 3.)
-  Site of Special Scientific Interest (SSSI) (note 3.)
-  Wildlife Trust Reserves (note 3.)
-  Country Wildlife Sites (note 3.)
-  Listed building (note 2)
-  Historic parks and gardens (note 1 & 2)
-  Scheduled Ancient Monument (SAM) (note 1 & 2)
-  SMR sites (note 2)
-  Existing right of way

Notes
 1.) Taken from Cherwell District Local Plan Adopted November 1996
 2.) Taken from Oxfordshire County Council Sites and Monuments Record
 3.) Taken from Thames Valley Environmental Records Centre, Oxfordshire County Council Licence no. LA076805

Plan L3

F	Amendments to red line boundary	LT	JC	JC	30/08/07
E	Minor amendments	LT	JC	JC	20/08/07
D	Minor amendments	LT	JC	JC	17/08/07
C	Amendment to application boundary	LT	JC	JC	16/08/07
B	Amendment to application boundary	IG	JC	JC	02/07/07
A	Amendment to application boundary	LT	ST	JC	20/7/07

COOPER PARTNERSHIP

T 0117 946 7488
 F 0117 946 7478
 mail@cooperpartnership.com
 www.cooperpartnership.com

Job
Heyford Park

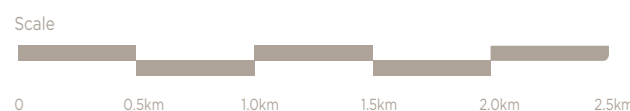
Title
LANDSCAPE PLANNING CONTEXT

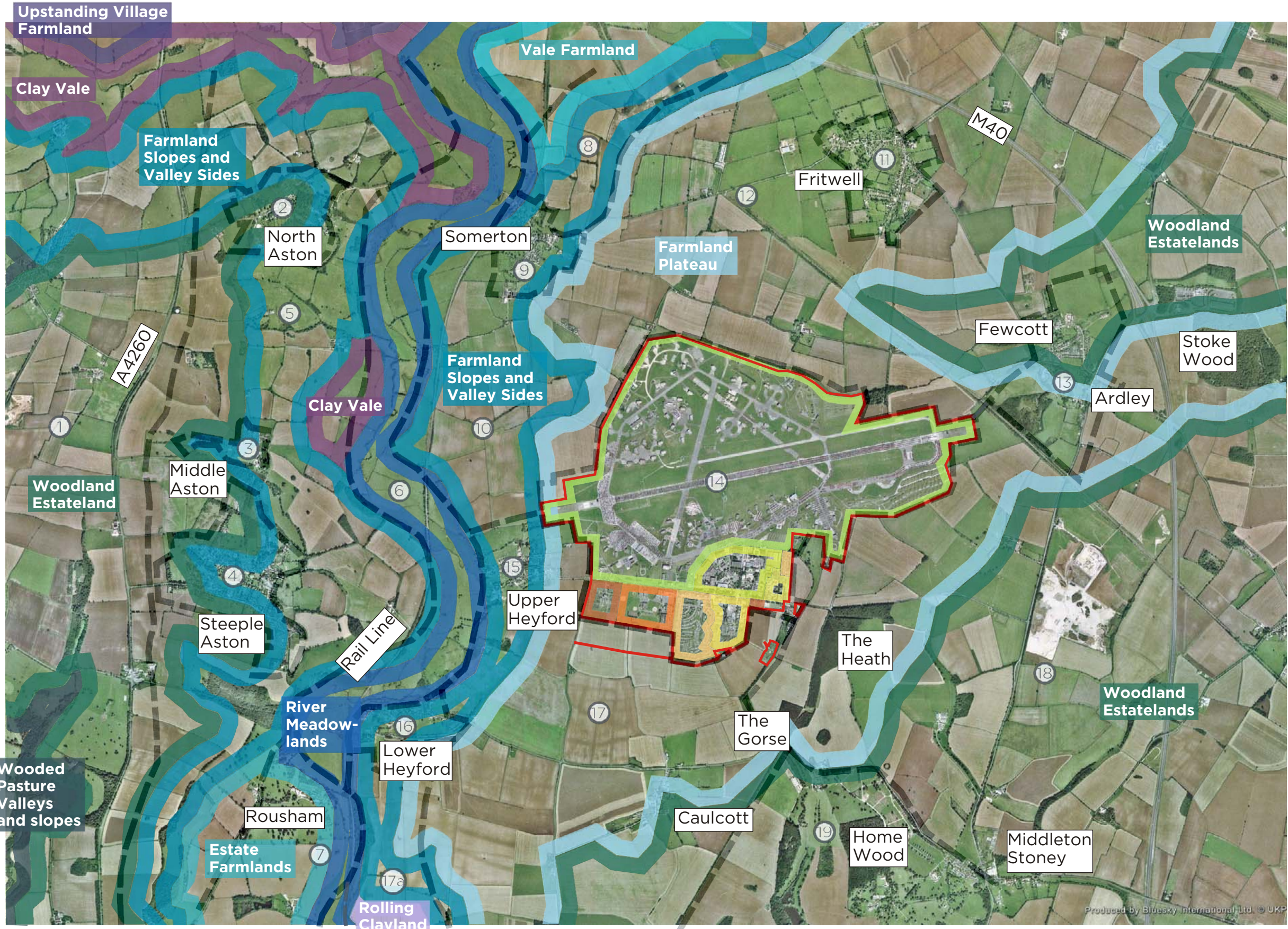
Scale	Date	Drawn	Checked	Approved
As shown	July 06	SH	ND	JC

Drawing no
1802/O4F

© Copyright

LANDSCAPE
 TOWNSCAPE
 ENVIRONMENT





Do not scale this drawing. All dimensions to be checked on site.

LEGEND

Planning application boundary

National Character Area 107: Cotswold (see note 1)

County Character Areas (see note 2)

- Rolling Clayland
- Clay Vale
- Upstanding Village Farmland
- River Meadowlands
- Farmland Slopes and Valley Sides
- Farmland Plateau
- Vale Farmland
- Woodland Estatelands
- Wooded Valleys and Slopes

Notes:

1. Study area lies entirely within the Cotswold National Character Area
2. Taken from the Oxfordshire Wildlife Landscape Study, OWLS
3. Taken from Conservation Plan 2005 Figure 5

Plan L4

F	Amendments to red line boundary	LT	JC	JC	30/08/07
E	Minor amendments	LT	JC	JC	20/08/07
D	Minor amendments	LT	JC	JC	17/08/07
C	Amendment to application boundary	LT	JC	JC	16/08/07
B	Amendment to application boundary	IG	JC	JC	20/07/07
A	Amendment to application boundary	LT	ST	JC	20/7/07

COOPER PARTNERSHIP

T 0117 946 7488
F 0117 946 7478
mail@cooperpartnership.com
www.cooperpartnership.com

Job
Heyford Park

Title
LANDSCAPE CHARACTER

Scale	Date	Drawn	Checked	Approved
As shown	July 06	SH	ND	JC

Drawing no
1802/05F

© Copyright

Local Character Areas (see note 3)

- ① Cherwell Ridge
- ② North Aston
- ③ Middle Aston
- ④ Steeple Aston
- ⑤ Aston Slopes
- ⑥ Cherwell Valley Floor
- ⑦ Rousham
- ⑧ Somerton-Souldern Slopes
- ⑨ Somerton
- ⑩ Mudginwell Slopes
- ⑪ Fritwell

- ⑫ Fritwell Plateau
- ⑬ Ardley-Fewcott
- ⑭ Upper Heyford Airbase
- ⑮ Upper Heyford
- ⑯ Lower Heyford
- ⑰ Caulcott Plateau/ 17a Caulcott Plateau Edge
- ⑱ Middleton Stoney Estatelands
- ⑲ Middleton Stoney Park

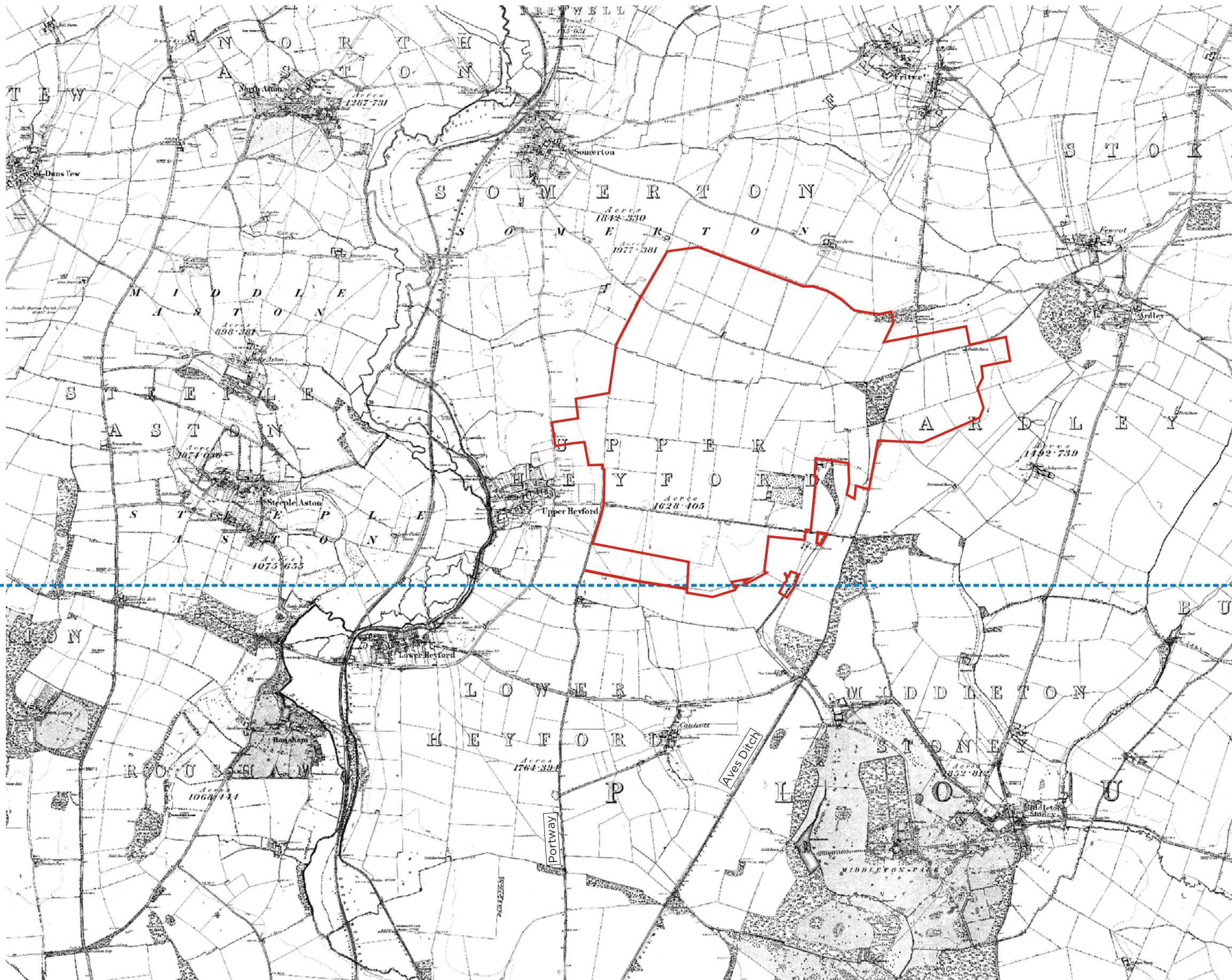
Site Specific Character Areas (see note 3)

- 8. Flying Field
- 9. Technical Site
- 10a. RAF Officers' Married Residential Area
- 10b. RAF Domestic & Residential Section
- 10c. Airmen's Housing & Bungalows
- 10d. Service and Recreational Area
- 10e. School and Other Area Prefabricated buildings



This image is an extract from The Millennium Map™ which is © getmapping.com plc - photography provided by Bluesky International Limited





LEGEND

 Planning application boundary

Sheet 22
1885 AD

Sheet 27
1884 AD

Plan L5

E	Amendments to red Line boundary	LT	JC	JC	30/08/07
D	Amendments to Job name	LT	JC	JC	20/08/07
C	Amendment to application boundary	LT	JC	JC	16/08/07
B	Amendment to application boundary	IG	JC	JC	20/07/07
A	Amendment to application boundary	LT	ST	JC	20/7/07

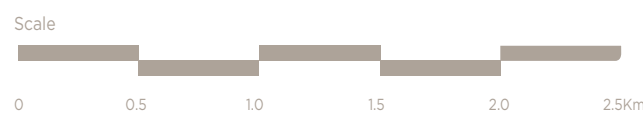
COOPER PARTNERSHIP

T 0117 946 7488
F 0117 946 7478
mail@cooperpartnership.com
www.cooperpartnership.com

Job:
Heyford Park

Title:
**HISTORIC MAP: FIRST EDITION
1884/1885**

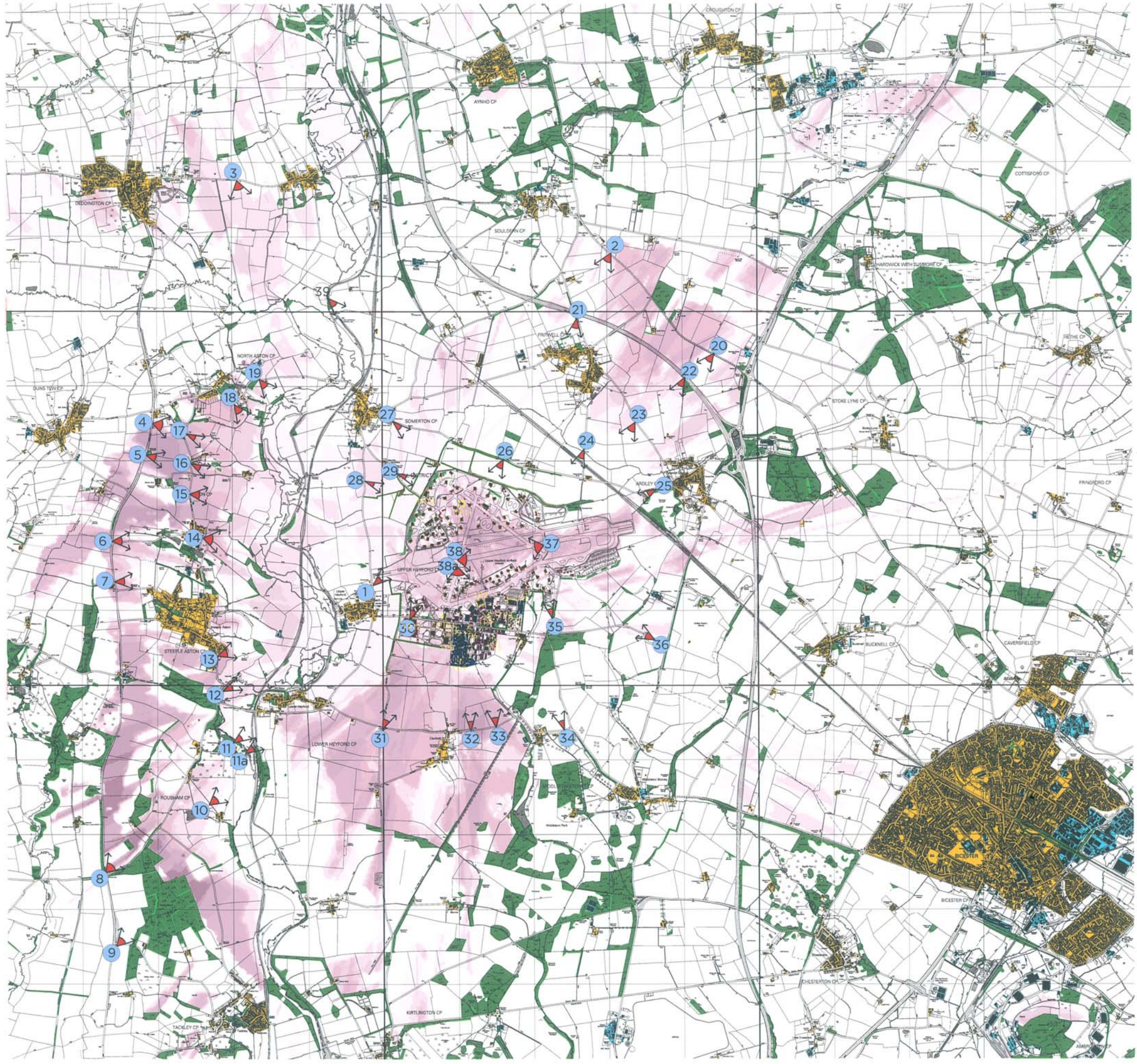
Scale	Date	Drawn	Checked	Approved
As shown	July 06	ND	JC	JC



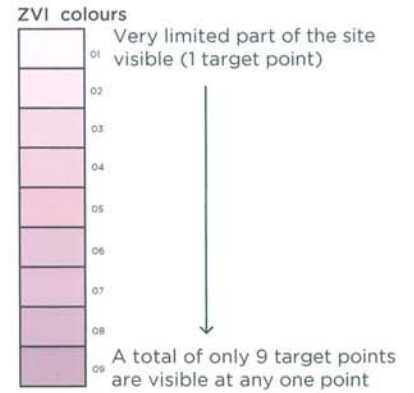
 Target point (assumed new development at xxxm height)

Target Point Heights

- TP 1 = 5m
- TP 2 = 12m
- TP 3 = 15m
- TP 4 = 10m
- TP 5 = 10m
- TP 6 = 4m
- TP 7 = 4m
- TP 8 = 8m
- TP 9 = 25m
- TP10 = 10m
- TP11 = 10m
- TP12 = 25m
- TP13 = 12m



LEGEND



- Visual Barriers**
-  Woodland 15m
 -  Settlements 8m
 -  Industrial buildings 11m
 -  Woodland-10m
 -  Hedge 2m
 -  4m buildings
 -  5m buildings
 -  8m buildings
 -  10m buildings
 -  12m buildings
 -  Photograph locations

Plan L6

A Amendment to job title LT JC JC 20/8/07

COOPER PARTNERSHIP

Heyford Park

VISUAL ENVELOPE OF SITE, INCLUDING WATER TOWERS AND CHIMNEY

As shown 07/07 LT ST ST



© Crown copyright. All rights reserved. Licence number 100008366



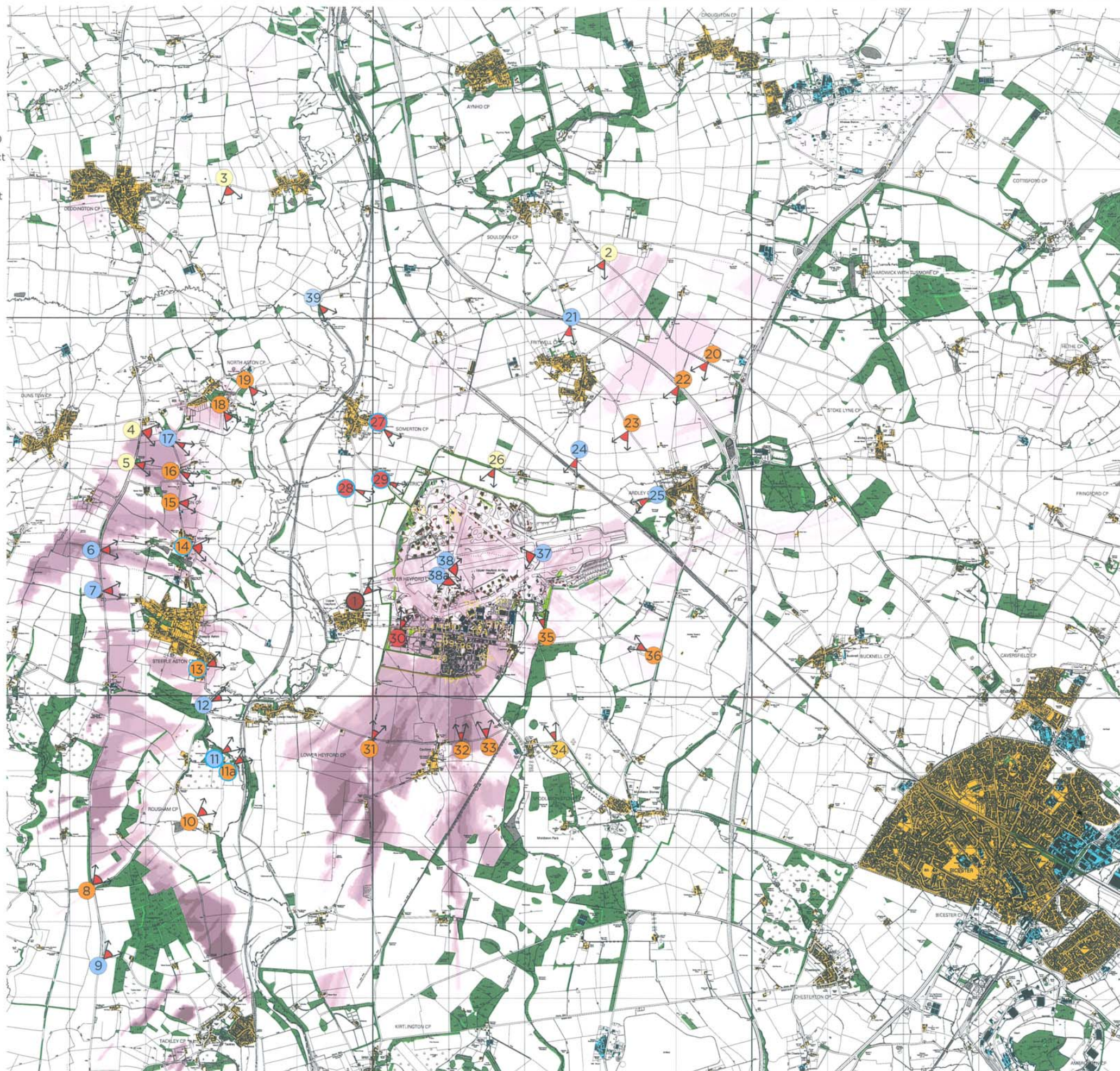
Visual Assessment
Refer to Table L12

- Major Adverse Impact
- Moderate Adverse Impact
- Slight Adverse Impact
- Negligible Adverse Impact
- No View
- Neutral (of any magnitude)
- Negligible Beneficial Impact
- Slight Beneficial Impact
- Moderate Beneficial Impact
- Major Beneficial Impact
- Significant
- Moderately Significant

Target point

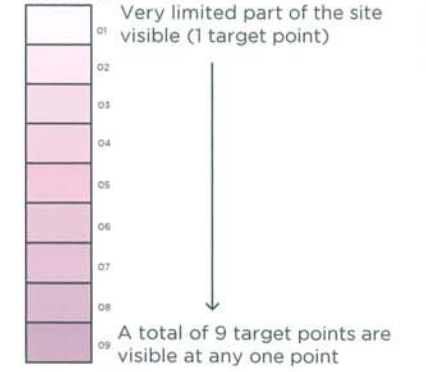
Target Point Heights

- TP 1 = 8m
- TP 2 = 12m
- TP 3 = 8m
- TP 4 = 8m
- TP 5 = 8m
- TP 6 = 10m
- TP 7 = 8m
- TP 8 = 8m
- TP 9 = 10m
- TP 10 = 8m
- TP 11 = 8m
- TP 12 = 0m
- TP 13 = 0m



LEGEND

ZVI colours



Visual Barriers

- Woodland 15m
- Settlements 8m
- Industrial buildings 11m
- Woodland-10m
- Hedge-2m
- New hedge -0m
- New planting-0m
- 4m buildings
- 5m buildings
- 8m buildings
- 10m buildings
- 12m buildings
- Viewpoints and photograph locations

Notes:
It is assumed that all buildings to be removed are demolished and all proposed buildings are constructed.

Plan L7

A Amendment to job title LT JC JC 20/8/07

COOPER PARTNERSHIP

Heyford Park

ZVI - DURING CONSTRUCTION, FOLLOWING REMOVAL OF WATER TOWERS AND CHIMNEY

As shown 07/07 LT ST JC



1802-58A



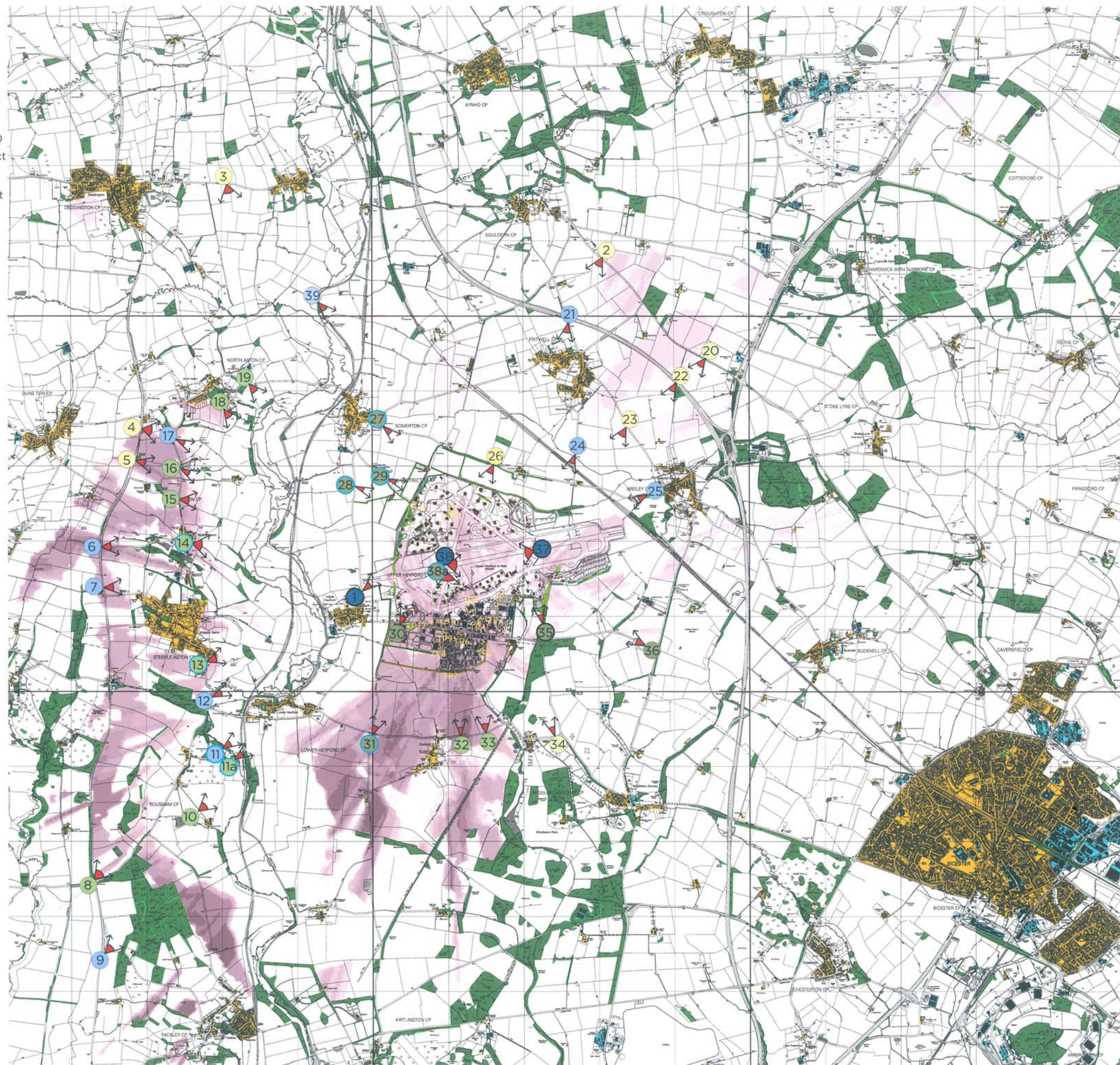
Visual Assessment
Refer to Table L12

- Major Adverse Impact
- Moderate Adverse Impact
- Slight Adverse Impact
- Negligible Adverse Impact
- No View
- Neutral (of any magnitude)
- Negligible Beneficial Impact
- Slight Beneficial Impact
- Moderate Beneficial Impact
- Major Beneficial Impact
- Significant
- Moderately Significant

Target point

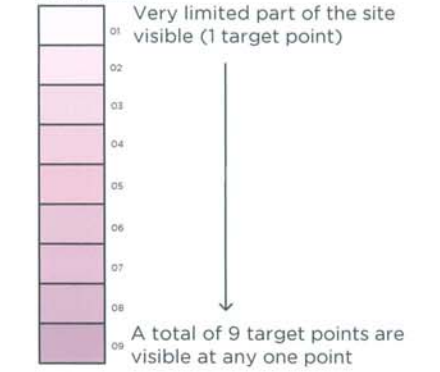
Target Point Heights

- TP 1 = 8m
- TP 2 = 12m
- TP 3 = 8m
- TP 4 = 8m
- TP 5 = 8m
- TP 6 = 10m
- TP 7 = 8m
- TP 8 = 8m
- TP 9 = 10m
- TP 10 = 8m
- TP 11 = 8m
- TP 12 = 0m
- TP 13 = 0m



LEGEND

ZVI colours



Visual Barriers

- Woodland 15m
- Settlements 8m
- Industrial buildings 11m
- Woodland-10m
- Hedge-2m
- New hedge -0m
- New planting-0m
- 4m buildings
- 5m buildings
- 8m buildings
- 10m buildings
- 12m buildings
- ① Viewpoints and photograph locations

Plan L8

A Amendment to job title LT JC JC 20/8/07

COOPER PARTNERSHIP

1802-55A
LANDSCAPE
TOWNSCAPE
ENVIRONMENT

Heyford Park

**ZVI - ON COMPLETION,
NO EFFECTIVE PLANTING**

As shown 07/07 LT ST JC



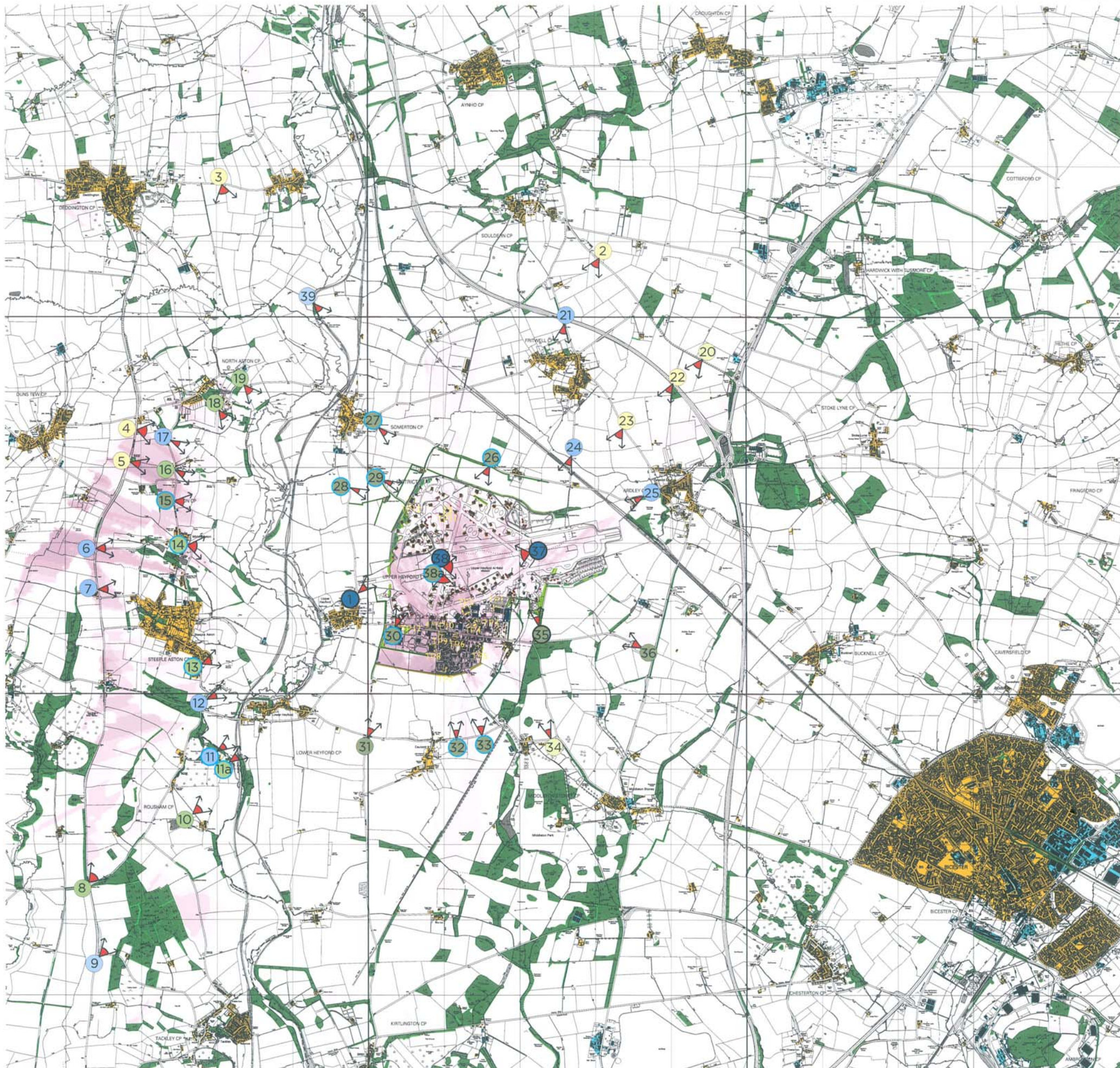
Visual Assessment
Refer to Table L12

- Major Adverse Impact
- Moderate Adverse Impact
- Slight Adverse Impact
- Negligible Adverse Impact
- No View
- Neutral (of any magnitude)
- Negligible Beneficial Impact
- Slight Beneficial Impact
- Moderate Beneficial Impact
- Major Beneficial Impact
- Significant
- Moderately Significant

TP1 Target point

Target Point Heights

- TP 1 = 8m
- TP 2 = 12m
- TP 3 = 8m
- TP 4 = 8m
- TP 5 = 8m
- TP 6 = 10m
- TP 7 = 8m
- TP 8 = 8m
- TP 9 = 10m
- TP 10 = 8m
- TP 11 = 8m
- TP 12 = 0m
- TP 13 = 0m



LEGEND



- Visual Barriers**
- Woodland 15m
 - Settlements 8m
 - Industrial buildings 11m
 - Woodland-18m
 - Hedge-2m
 - New hedge -12m
 - New planting-15m
 - 4m buildings
 - 5m buildings
 - 8m buildings
 - 10m buildings
 - 12m buildings
 - Viewpoints and photograph locations

Plan L9

A Amendment to job title LT JC JC 20/8/07

COOPER PARTNERSHIP

1802-59A
Landscape and Townscape

Heyford Park

ZVI - 20 YEARS AFTER PLANTING

As shown 07/07 LT ST JC



© Crown copyright. All rights reserved.
Licence number 100008366





- ### LEGEND
- The airfield site
 - Buildings to be retained in flying field
 - Indicative buildings or structures to be removed (see Pegagus Plan N0111.17-1b and Schedule)
 - Buildings removed before February 2007
 - Existing offsite vegetation
 - Existing vegetation on site to be managed (See note 1)
 - Existing hedgerow to be managed and supplemented
 - New hedgerow
 - Proposed new planting
 - Proposed viewpoint of main runway
 - Proposed footpath (see also note 3)
 - Proposed bridleway (see also note 4)
 - Existing footpath
 - Existing track, status to be clarified
 - Existing bridleway
 - Potential footpath links by Oxford County Council (OCC) with NOC funding
 - OCC proposed crossing with NOC funding
 - Runway removed
 - Concrete surfaces to be scarified, tarmac removed (see note 5 and ES landscape and visual text)
 - Car storage area (QEK)
 - County Wildlife Site (CWS)
 - Proposed 2.2m high visual quality contemporary fence
 - Security fence retained (barbed wire removed except around Northern Bomb Stores and QRAA)
 - Proposed stock proof fence
 - HGV access

NOTE

1. Existing conifer planting will be replaced by deciduous planting
2. Upper Heyford Trail utilises existing public foot paths in some areas
3. Portway restored as footpath
4. Aves Ditch to be bridleway 20m wide green lane; stock proof fencing to protect County Wildlife Site
5. Scarified surface allowed to revegetate, grassland on either side carefully protected

Plan L10

G	Minor amendments	LT	JC	JC	20/8/07
F	Minor amendments	LT	JG	JG	15/07/07
E	Minor amendments to notations	IG	JC	JC	02/07/07

COOPER PARTNERSHIP

1001 Ave 2008
2007 Ave 2010

1001 Ave 2008
2007 Ave 2010

1001 Ave 2008
2007 Ave 2010

Heyford Park

LANDSCAPE KEY PLAN

NTS	February 07	IG	JC	JC
-----	-------------	----	----	----

1802-48-G

LANDSCAPE

TOWNSCAPE

ENVIRONMENT





LEGEND

- (1) Trees which soften the development skyline in distant views
- (2) Strong road edge trees which create distinctive character
- (3) Trees which emphasize 1930's 'Trident' layout
- (4) Trees forming setting for 1930's former Officers' Mess
- (5) Other significant copses, tree groups and lines
- (6) Tall tree groups forming skyline features within the development
- (7) Non-native conifers, alien to the landscape character

Notes:
1) For details of individual trees see Plan L12 and Appendix L.A02
2) For details of tree losses see Plan L13

Plan L11

C	Minor amendments	LT	JC	JC	20/08/07
B	Tree groups revised	IG	JC	JC	02/08/07
A	Additional areas	HT	JC	JC	07/07
Rev	Reason				

COOPER PARTNERSHIP

T 0117 946 7488
F 0117 946 7478
mail@cooperpartnership.com
www.cooperpartnership.com

Job
Heyford Park

MAJOR TREE GROUPS WITHIN THE SETTLEMENT AREA

Scale	Date	Drawn	Checked	Approved
NTS	July 07	HT	JC	JC

Drawing no
1802-52C

© Copyright



Do not scale this drawing
All dimensions to be checked on site

LEGEND

-  'A' CATEGORY
trees required for removal
-  'B' CATEGORY
trees required for removal
-  'C' CATEGORY
trees required for removal
-  'R' CATEGORY
trees required for removal
-  NON NATIVE CONIFERS
trees required for removal



NOTE:
Please refer to full scale plan

L 12

COOPER
PARTNERSHIP


1001 8th Ave
1001 8th Ave
1001 8th Ave
www.cooperpartnership.com

HEYFORD PARK

TREES PLAN

Date	Drawn	Checked	Approved
12/05/2010	GD/JP	HT	JC

Drawing no: 1001-40



Copyright

For continuation see drawing L13b

For continuation see drawing L13h

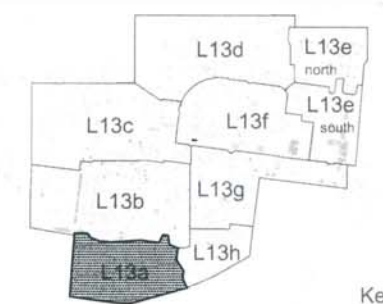


L13a

LEGEND

- 'A' CATEGORY trees required for removal
- 'B' CATEGORY trees required for removal
- 'C' CATEGORY trees required for removal
- 'R' CATEGORY trees required for removal
Main trees only, see schedule for more detail
- ALIEN CONIFERS trees required for removal
Main groups only, see schedule for more detail

NOTE:
Please refer to solid colour trees only



Key Plan

COOPER PARTNERSHIP

1002 / 01	LANDSCAPE	COOPER PARTNERSHIP
1002 / 01	LANDSCAPE	COOPER PARTNERSHIP
1002 / 01	LANDSCAPE	COOPER PARTNERSHIP
1002 / 01	LANDSCAPE	COOPER PARTNERSHIP
1002 / 01	LANDSCAPE	COOPER PARTNERSHIP

For continuation see drawing L13c



For continuation see drawing L13g

For continuation see drawing L13h

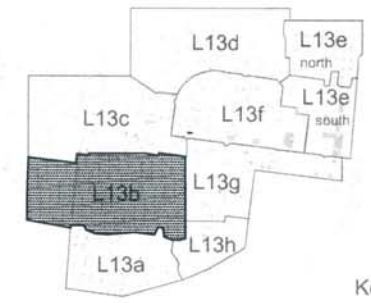
For continuation see drawing L13a

L13b

LEGEND

- 'A' CATEGORY trees required for removal
- 'B' CATEGORY trees required for removal
- 'C' CATEGORY trees required for removal
- 'R' CATEGORY trees required for removal Main trees only, see schedule for more detail
- ALLEN CONIFERS trees required for removal Main groups only, see schedule for more detail

NOTE: Please refer to solid colour trees only



Key Plan

COOPER PARTNERSHIP

Key Plan

Key Plan

TREE PLAN DRAWING 2 OF 8

V5008A0 JULY 2007 H D J





For continuation see drawing L13d

For continuation see drawing L13f

For continuation see drawing L13g

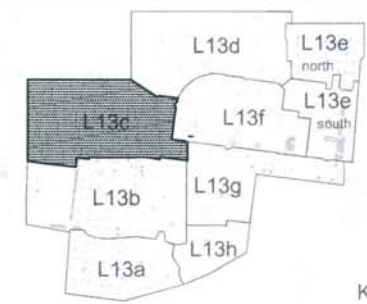
For continuation see drawing L13b

L13c

LEGEND

- 'A' CATEGORY trees required for removal
- 'B' CATEGORY trees required for removal
- 'C' CATEGORY trees required for removal
- 'R' CATEGORY trees required for removal
Main trees only, see schedule for more detail
- ALIEN CONIFERS trees required for removal
Main groups only, see schedule for more detail

NOTE:
Please refer to solid colour trees only



Key Plan

COOPER PARTNERSHIP

Hayford Park

TREE PLAN
DRAWING 3 OF 3

V3008AD JULY 2007 JB JC JC





For continuation see drawing L13c

For continuation see drawing L13f

For continuation see drawing L13e north

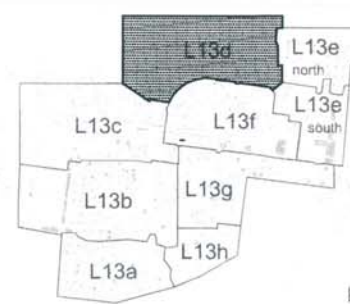
For continuation see drawing L13e south

L13d

LEGEND

- 'A' CATEGORY trees required for removal
- 'B' CATEGORY trees required for removal
- 'C' CATEGORY trees required for removal
- 'R' CATEGORY trees required for removal
Main trees only, see schedule for more detail
- ALIEN CONIFERS trees required for removal
Main groups only, see schedule for more detail

NOTE:
Please refer to solid colour trees only

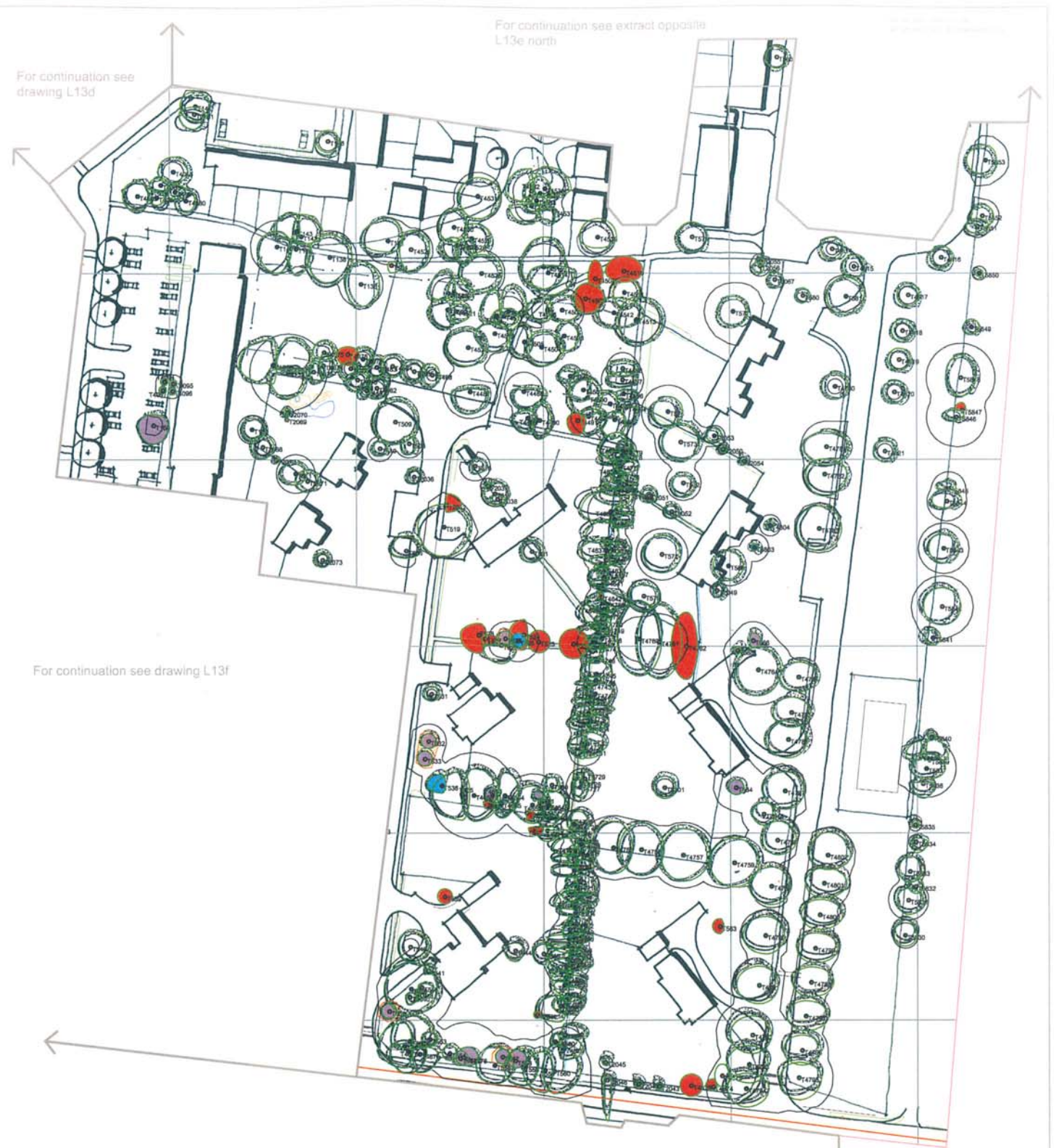


Key Plan

COOPER PARTNERSHIP

L13d
 north
 south
 L13c L13f L13e
 L13b L13g
 L13a L13h

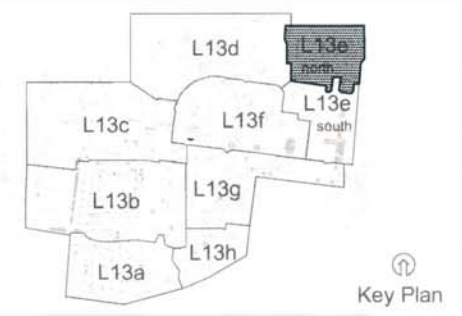
TREE PLAN
 DRAWING 4 OF 8
 V000840 JULY 2007 H JC JC
 M03 / 44
 L13d.dwg
 L13d.dwg



L13e

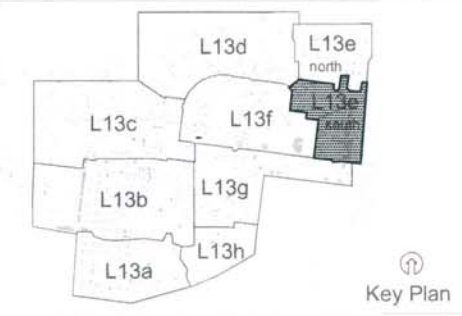
LEGEND

- 'A' CATEGORY
trees required for removal
 - 'B' CATEGORY
trees required for removal
 - 'C' CATEGORY
trees required for removal
 - 'R' CATEGORY
trees required for removal
Main trees only, see schedule for more detail
 - ALIEN CONIFERS
trees required for removal
Main groups only, see schedule for more detail
- NOTE:
Please refer to solid colour trees only



LEGEND

- 'A' CATEGORY
trees required for removal
 - 'B' CATEGORY
trees required for removal
 - 'C' CATEGORY
trees required for removal
 - 'R' CATEGORY
trees required for removal
Main trees only, see schedule for more detail
 - ALIEN CONIFERS
trees required for removal
Main groups only, see schedule for more detail
- NOTE:
Please refer to solid colour trees only



COOPER PARTNERSHIP

Keyford Park

TREE PLAN
DRAWING 3 OF 6

V5008A0 JULY 2007 HB JC JC

1002 / 48
L13e north
L13e south

For continuation see drawing L13d

For continuation see drawing L13e

For continuation see drawing L13e south

For continuation see drawing L13c

For continuation see drawing L13g

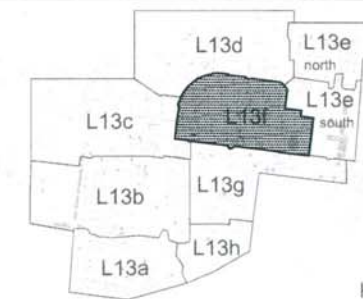


L13f

LEGEND

- 'A' CATEGORY trees required for removal
- 'B' CATEGORY trees required for removal
- 'C' CATEGORY trees required for removal
- 'R' CATEGORY trees required for removal
Main trees only, see schedule for more detail
- ALIEN CONIFERS trees required for removal
Main groups only, see schedule for more detail

NOTE: Please refer to solid colour trees only



COOPER PARTNERSHIP

Hayford Park

TREE PLAN DRAWING 6 OF 8

1500840 JULY 2007 JB JC JC

Key Plan



For continuation see drawing L13f

For continuation see drawing L13e south

For continuation see drawing L13c

For continuation see drawing L13b

For continuation see drawing L13h

L13g

COOPER PARTNERSHIP

2007/07/07
2007/07/07

Hayfield park

TREE PLAN
DRAWING 7 OF 8

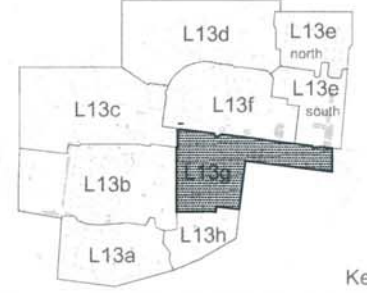
V300840 JULY 2007 M JC JC



LEGEND

- 'A' CATEGORY trees required for removal
- 'B' CATEGORY trees required for removal
- 'C' CATEGORY trees required for removal
- 'R' CATEGORY trees required for removal
Main trees only, see schedule for more detail
- ALIEN CONIFERS trees required for removal
Main groups only, see schedule for more detail

NOTE:
Please refer to solid colour trees only



Key Plan

For continuation see drawing L13g

For continuation see drawing L13b

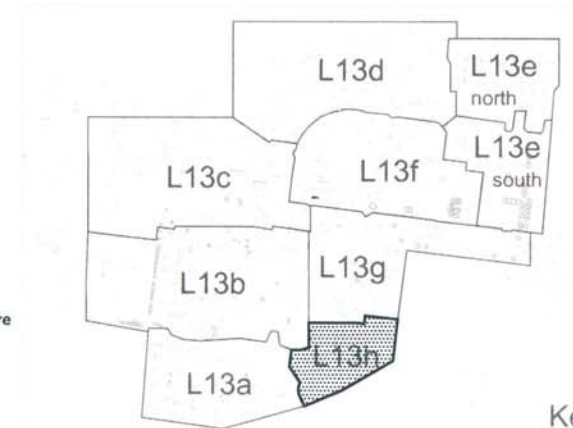
For continuation see drawing L13a



LEGEND

- 'A' CATEGORY trees required for removal
- 'B' CATEGORY trees required for removal
- 'C' CATEGORY trees required for removal
- 'R' CATEGORY trees required for removal
Main trees only, see schedule for more detail
- ALIEN CONIFERS
trees required for removal
Main groups only, see schedule for more detail

NOTE:
Please refer to solid colour trees only



Key Plan

L13h

COOPER PARTNERSHIP

1802 / 68
 LANDSCAPE
 TOWNSCAPE
 ENVIRONMENT

Heyford Park

TREE PLAN
 DRAWING 8 OF 8

Scale	Date	Drawn	Checked	Approved
1/500@A1	JULY 2007	IG	DD	JC

1802 / 68
 LANDSCAPE
 TOWNSCAPE
 ENVIRONMENT

Do not scale this drawing.
All dimensions to be checked on site.



Camp Road trees retained as avenue, subject to access

Existing trees adjacent to A Frame hangars retained and replaced by indigenous trees

Trees within 'trident' retained, managed and crown lifted to allow HGV movements

Tree planting supplemented within security fence

New hedgerow and close centred trees provide single robust boundary to nose docking sheds

Flying field security formed by new 2.2 m contemporary fence between A Frame hangars, together with new planting

QEK area

Security fence removed and new 2.2m contemporary fence erected

Groups of trees soften western edge of housing area

New access located to avoid existing trees

Notes:
Please refer to the plan L10 Landscape Keyplan for more details

Plan L14

COOPER PARTNERSHIP

T 0117 946 7488
F 0117 946 7478
mail@cooperpartnership.com
www.cooperpartnership.com

Job
Heyford Park

Title
LANDSCAPE MASTERPLAN FOR SETTLEMENT AREA

Scale	Date	Drawn	Checked	Approved
NTS	August 07	HT	JC	JC

Drawing no
1802-69

© Copyright

LANDSCAPE
TOWNSCAPE
ENVIRONMENT



New off site hedgerow planted including Tuley tubes and mats with post and tensioned wire fence, see plan L10

Southern and eastern housing edges articulated to form enclosure to open space, creating visually soft boundary

Existing trees to the north of Camp Road retained as linear woodland

Former Parade Ground redesigned as simple formal open space

Formal square forms central open space to new development, overlooked on three sides, modern furniture and lighting

Indigenous hedge planted along eastern boundary

Avenue planting of fastigate trees along highway

Groups of trees with open glades to soften southern edge, underplanted with locally indigenous grassland and shrubs

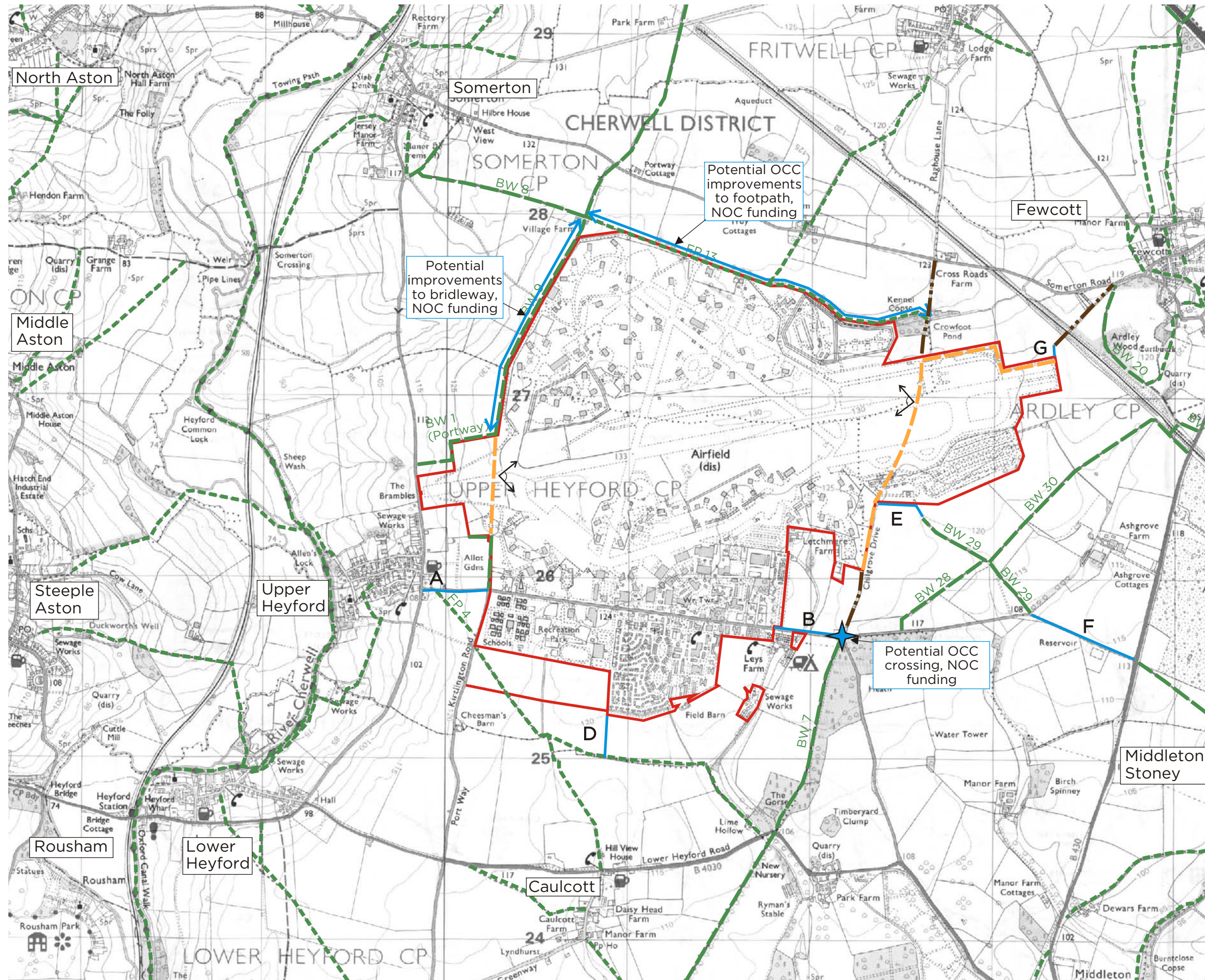
Indigenous hedge along boundaries

Existing specimen standard trees retained and supplemented to provide character to new housing areas








Open space designed around retention pond all to smooth running levels with gentle mounding

Carswell Circle trees retained and managed

Do not scale this drawing.
All dimensions to be checked on site.



LEGEND

-  Site boundary
-  Existing Public Footpath
-  Existing Bridleway
-  NOC Proposals
-  Oxfordshire County Council potential link or upgrade (A-G), NOC funding
-  Viewpoint
-  Existing track unknown status

Plan L15

E	Amendment to red line boundary	LT	JC	JC	30/08/07
D	Minor amendments	LT	JC	JC	20/08/07
C	Minor amendments to site boundary	LT	JC	JC	16/08/07
B	Minor amendments	IG	JC	JC	02/07/07
A	Amended security fence height	LT	ST	JC	13/07/07

COOPER PARTNERSHIP

T 0117 946 7488
F 0117 946 7478
mail@cooperpartnership.com
www.cooperpartnership.com

Heyford Park

POTENTIAL AND EXISTING PUBLIC ACCESS

Scale	Date	Drawn	Checked	Approved
NTS	July 07	LT	ST	JC

Drawing no 1802/57E © Copyright

