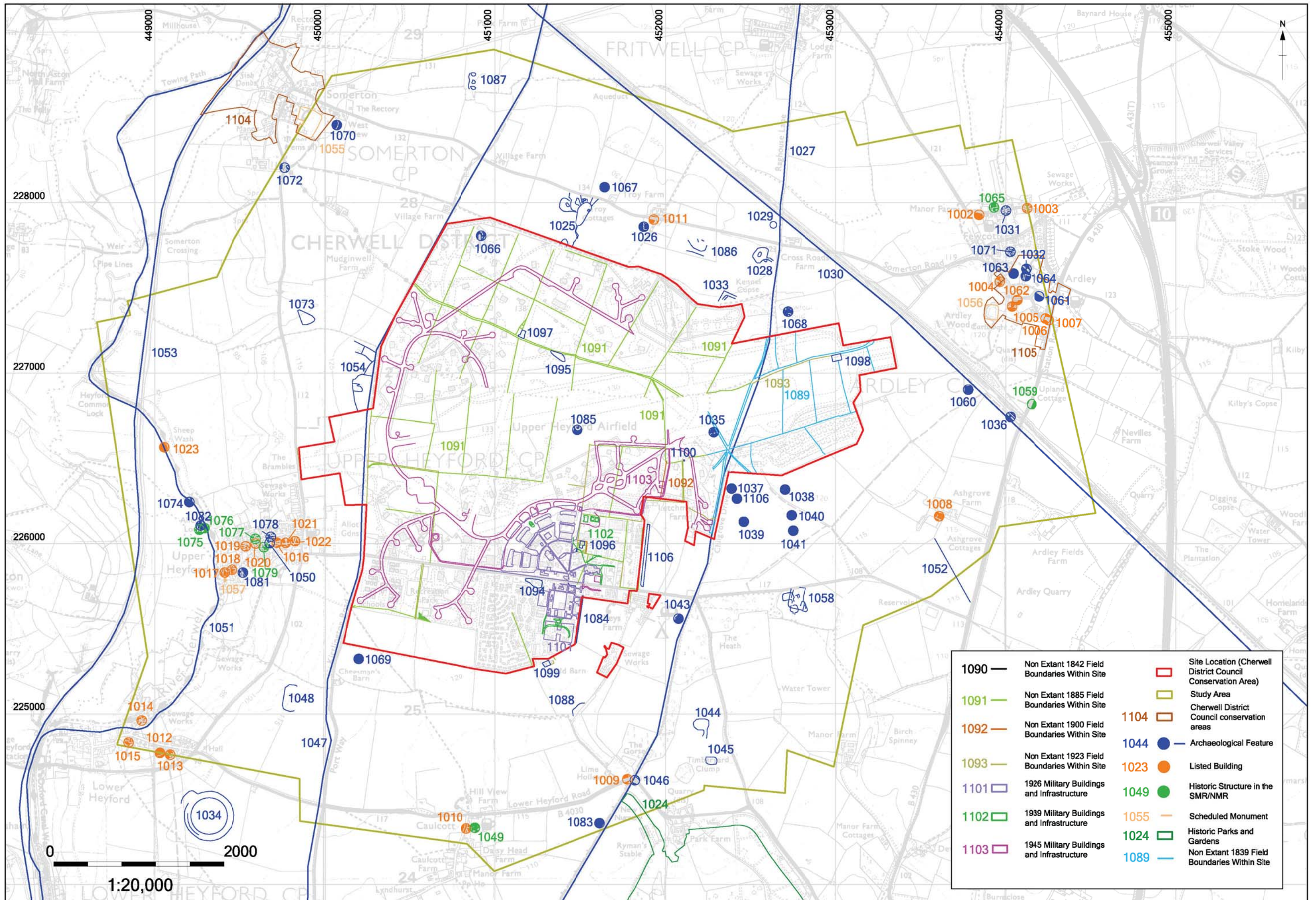


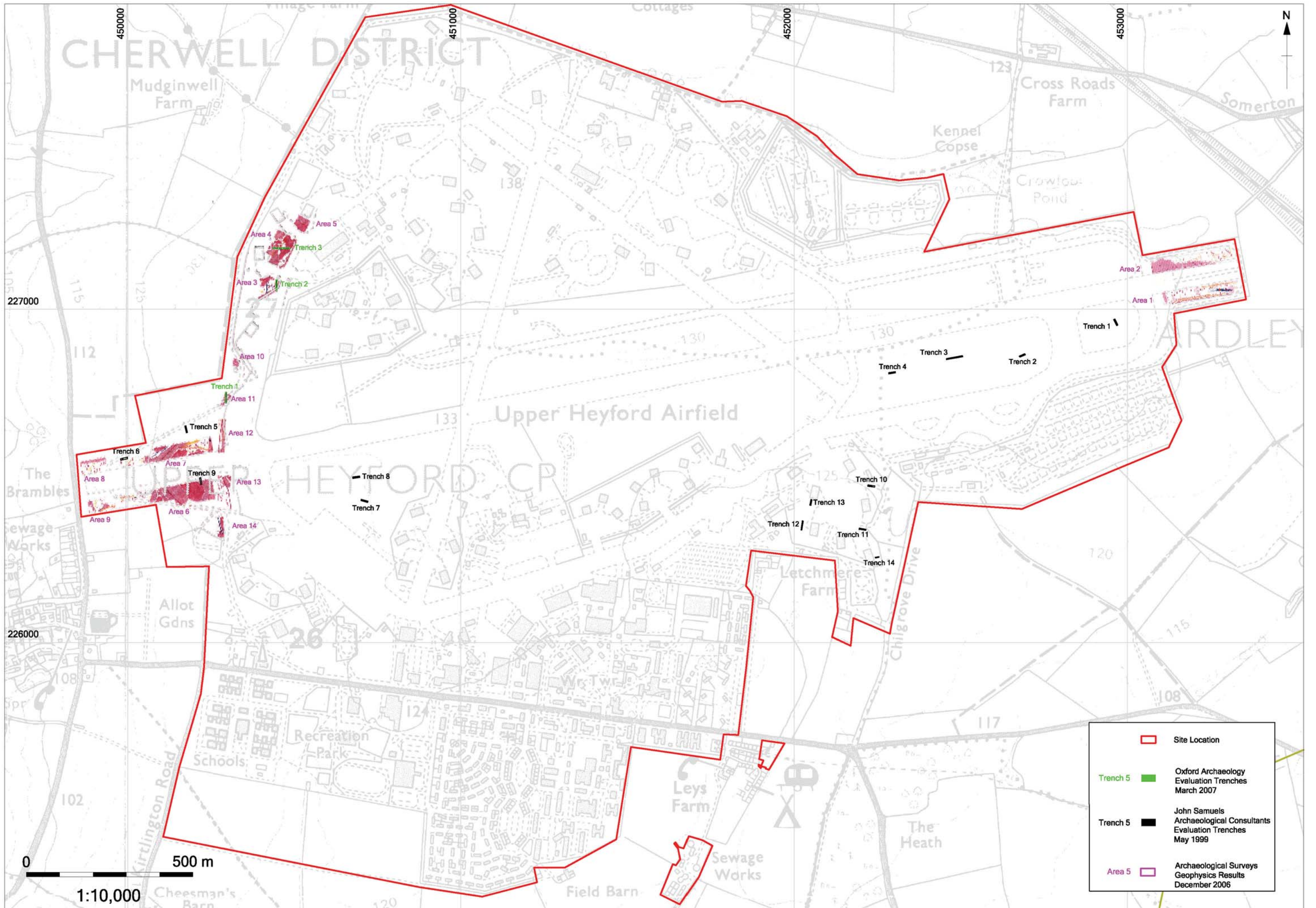
X:\raf_upper_heyford_eia\Geomatics\CAD\current\UpperHeyfordMapping30_07_07.dwg(CH1)***** 03 Aug 2007







All OS data reproduced by permission of the Ordnance Survey on behalf of the controller of Her Majesty's Stationery Office. © Crown copyright. All rights reserved. License AL 100005569

Figure CH1: Archaeological features mapping

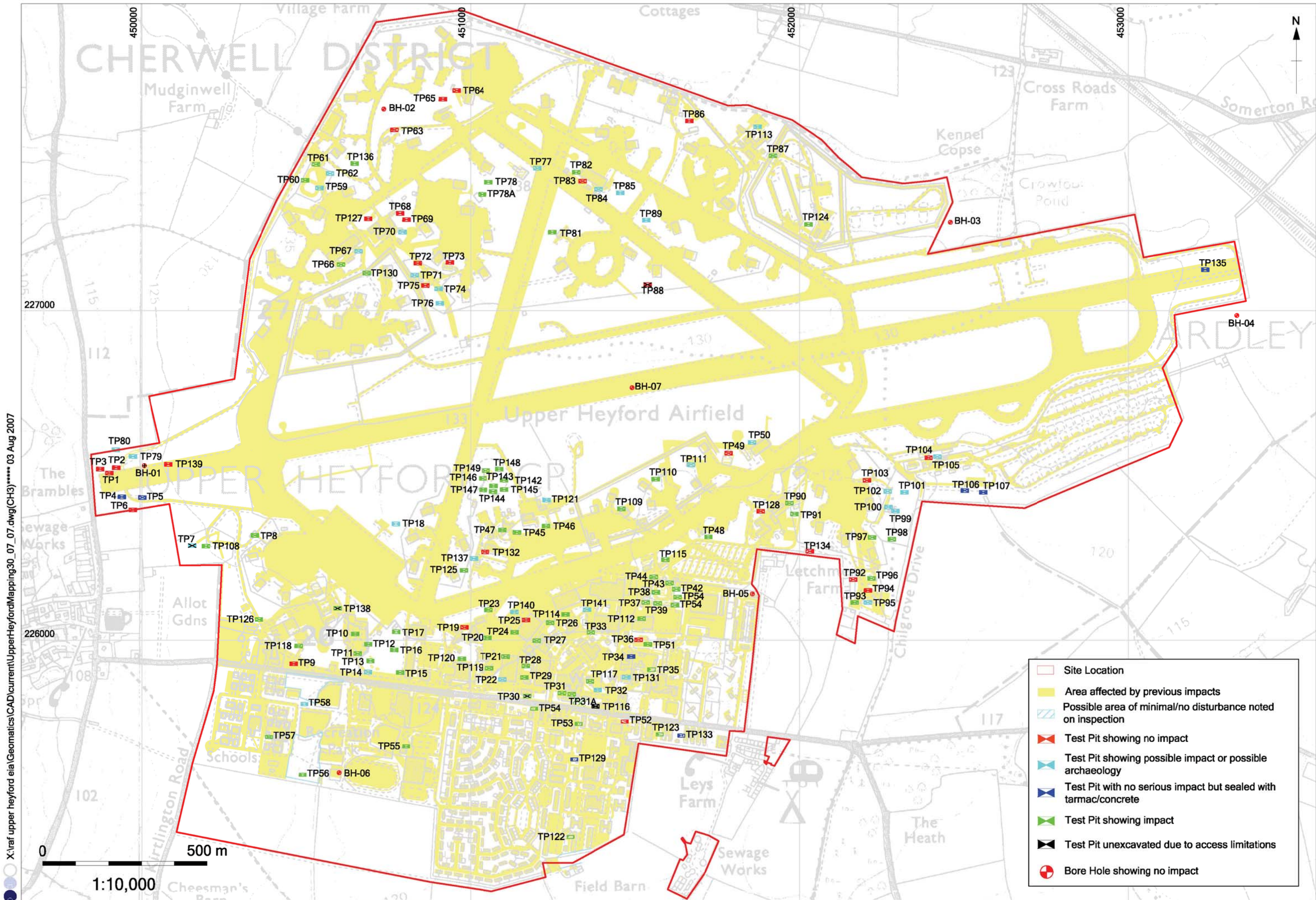
X:\raf upper heyford eia\Geomatics\CAD\current\UpperHeyfordMapping30_07_07.dwg(CH2)***** 03 Aug 2007



	Site Location
	Oxford Archaeology Evaluation Trenches March 2007
	John Samuels Archaeological Consultants Evaluation Trenches May 1999
	Archaeological Surveys Geophysics Results December 2006

All OS data reproduced by permission of the Ordnance Survey on behalf of the controller of Her Majesty's Stationary Office. © Crown copyright. All rights reserved. License AL 10000569

Figure CH2: Archaeological intervention map

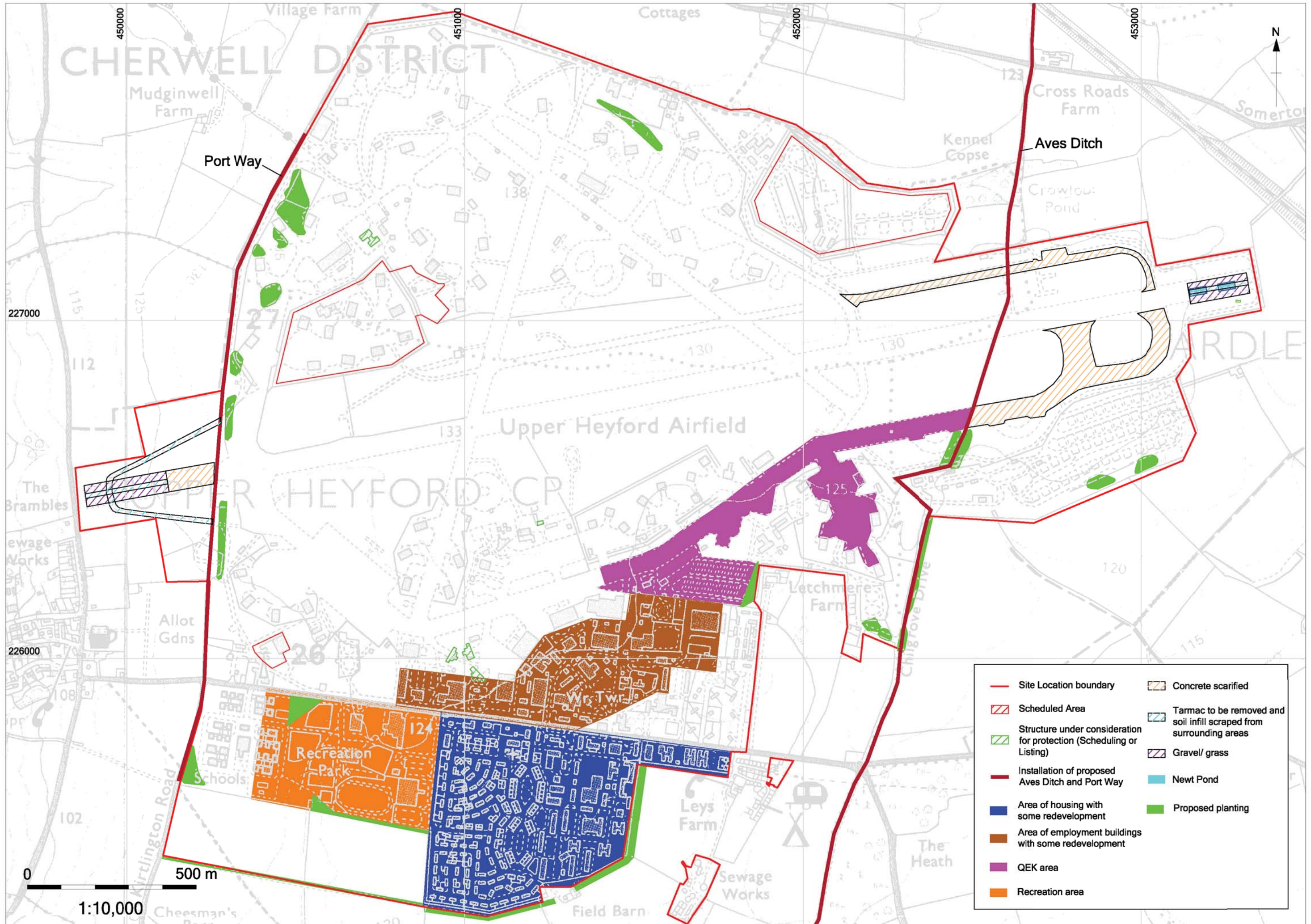


X:\raf upper heyford eia\Geomatics\CAD\current\UpperHeyfordMapping30_07_07.dwg(CH3)***** 03 Aug 2007

All OS data reproduced by permission of the Ordnance Survey on behalf of the controller of Her Majesty's Stationery Office. © Crown copyright. All rights reserved. License AL 100005569

Figure CH3: Previous Impacts

X:\raf_upper_heyford_eia\Geomatics\CAD\current\UpperHeyfordMapping30_07_07.dwg(CH4)***** 03 Aug 2007



All OS data reproduced by permission of the Ordnance Survey on behalf of the controller of Her Majesty's Stationary Office. © Crown copyright. All rights reserved. License AL 100005569

Figure CH4: Potential Impacts