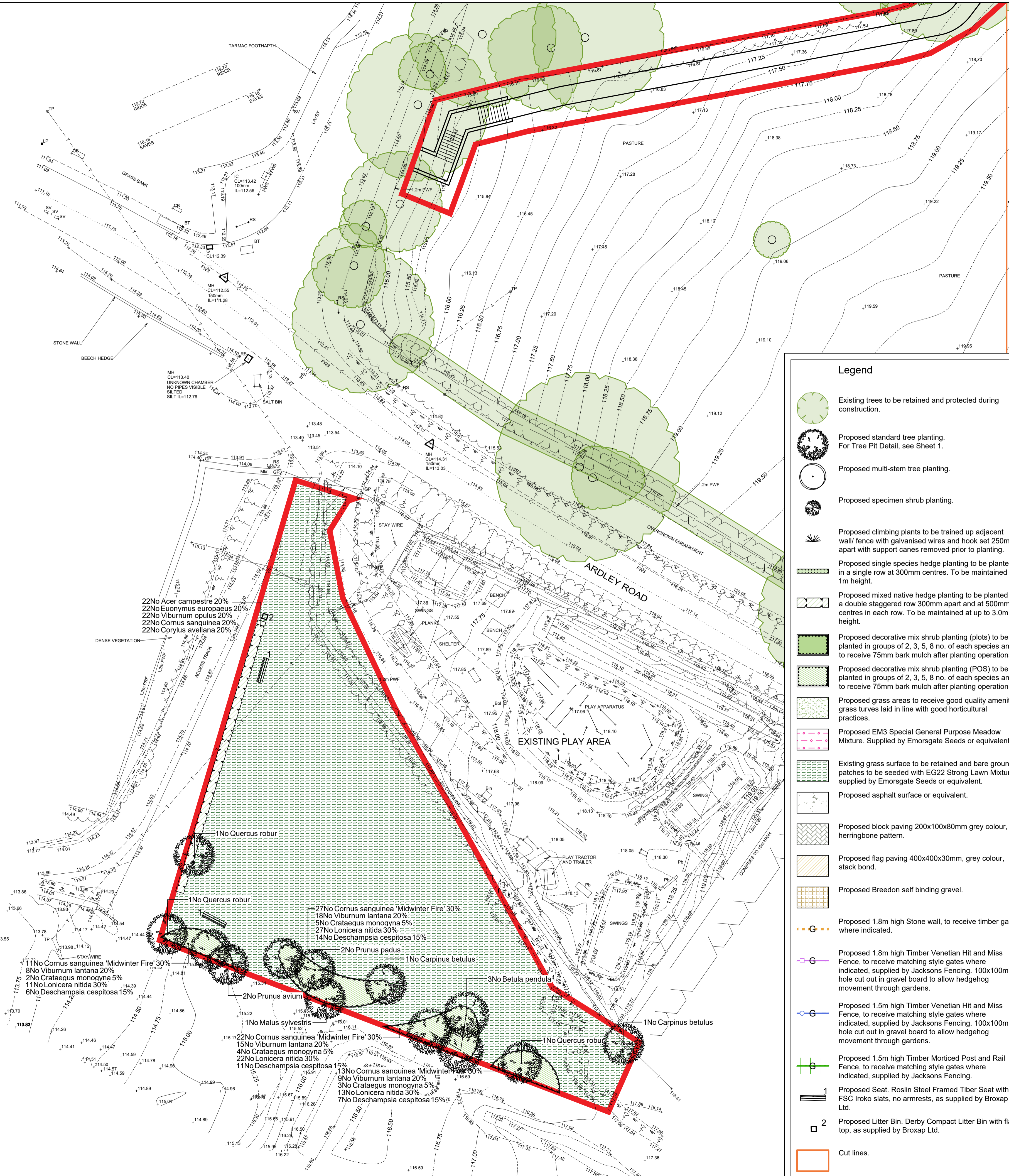


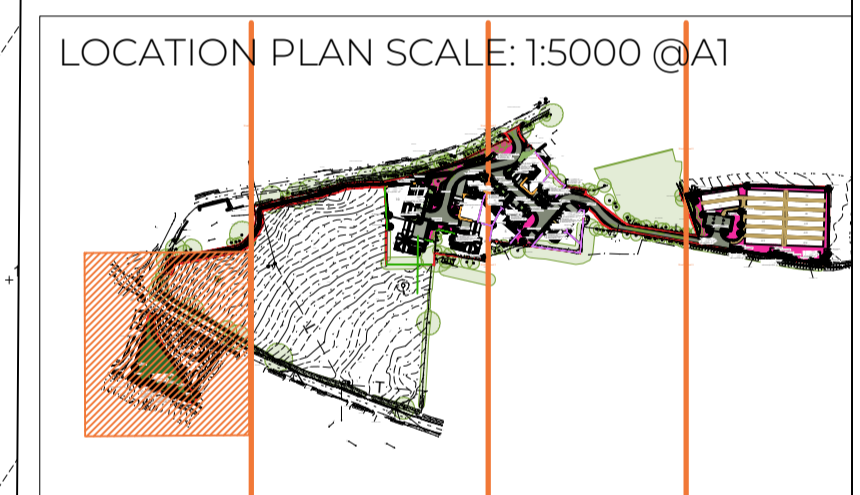
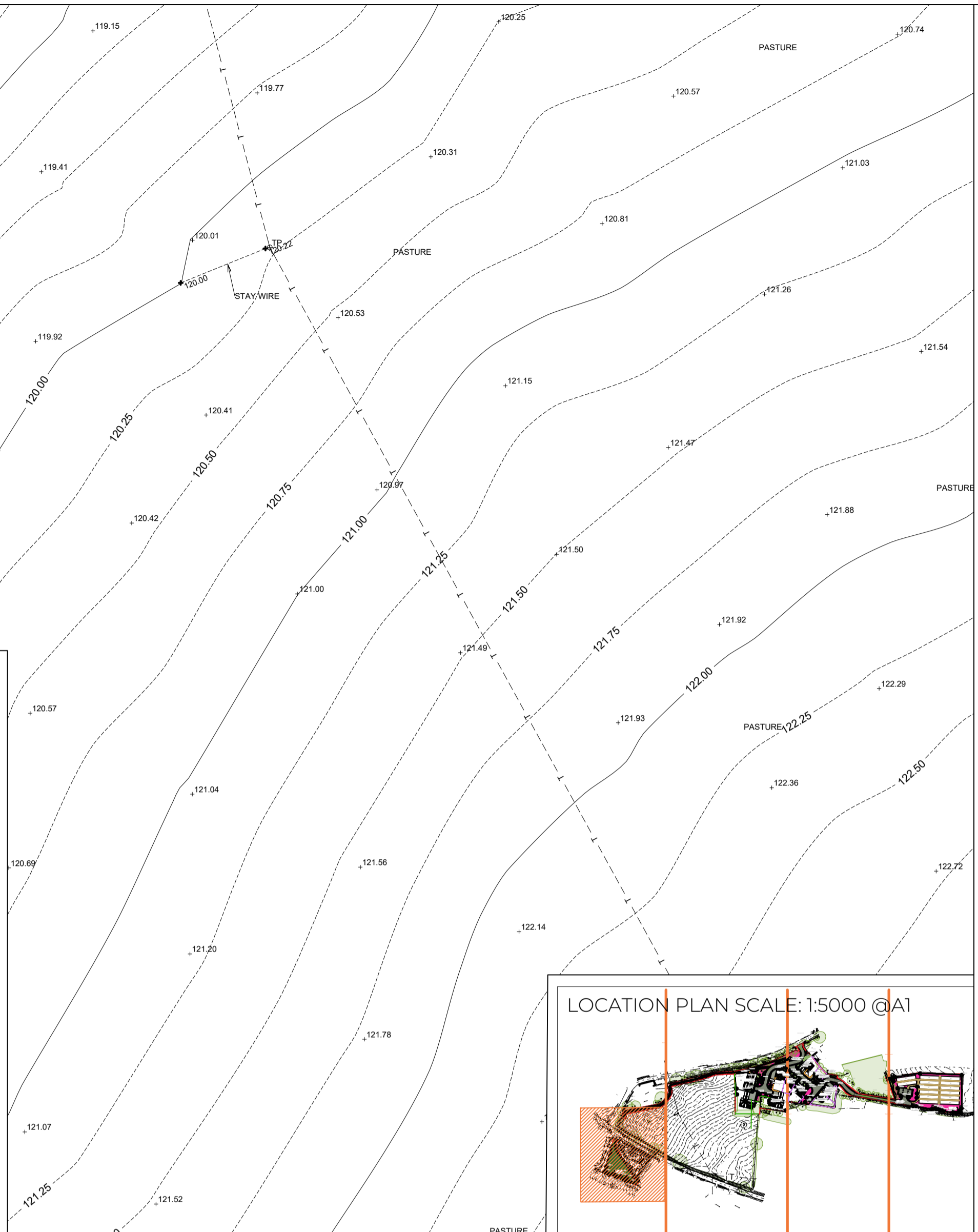
SPECIFICATION
All works to comply with the written Soft Landscape Specification.

NOTES:
DO NOT SCALE FROM DRAWING
NOT FOR CONSTRUCTION, FOR PLANNING PURPOSES ONLY



Legend

- Existing trees to be retained and protected during construction.
- Proposed standard tree planting. For Tree Pit Detail, see Sheet 1.
- Proposed multi-stem tree planting.
- Proposed specimen shrub planting.
- Proposed climbing plants to be trained up adjacent wall/fence with galvanised wires and hook set 250mm apart with support canes removed prior to planting.
- Proposed single species hedge planting to be planted in a single row at 300mm centres. To be maintained at 1m height.
- Proposed mixed native hedge planting to be planted in a double staggered row 300mm apart and at 500mm centres in each row. To be maintained at up to 3.0m height.
- Proposed decorative mix shrub planting (plots) to be planted in groups of 2, 3, 5, 8 no. of each species and to receive 75mm bark mulch after planting operations.
- Proposed decorative mix shrub planting (POS) to be planted in groups of 2, 3, 5, 8 no. of each species and to receive 75mm bark mulch after planting operations.
- Proposed grass areas to receive good quality amenity grass turves laid in line with good horticultural practices.
- Proposed EM3 Special General Purpose Meadow Mixture. Supplied by Emorsgate Seeds or equivalent.
- Existing grass surface to be retained and bare ground patches to be seeded with EG22 Strong Lawn Mixture supplied by Emorsgate Seeds or equivalent.
- Proposed asphalt surface or equivalent.
- Proposed block paving 200x100x80mm grey colour, herringbone pattern.
- Proposed flag paving 400x400x30mm, grey colour, stack bond.
- Proposed Brendon self binding gravel.
- Proposed 1.8m high Stone wall, to receive timber gate where indicated.
- Proposed 1.8m high Timber Venetian Hit and Miss Fence, to receive matching style gates where indicated, supplied by Jacksons Fencing. 100x100mm hole cut out in gravel board to allow hedgehog movement through gardens.
- Proposed 1.5m high Timber Venetian Hit and Miss Fence, to receive matching style gates where indicated, supplied by Jacksons Fencing. 100x100mm hole cut out in gravel board to allow hedgehog movement through gardens.
- Proposed 1.5m high Timber Morticed Post and Rail Fence, to receive matching style gates where indicated, supplied by Jacksons Fencing.
- Proposed Seat, Roslin Steel Framed Tiber Seat with FSC Iroko slats, no armrests, as supplied by Broxap Ltd.
- Proposed Litter Bin, Derby Compact Litter Bin with flat top, as supplied by Broxap Ltd.
- Cut lines.



Full Planting Schedule

Trees	Species Name	Height	Pot Size	Specification	Density	No.
	Acer campestre	60-80cm	0.5Ctr	Double Staggered at 0.3m offset	0.5Ctr	220
	Betula pendula	10-12cm	300-350cm	Counted	2x Standard Clear Stem 175-200cm 4 brks B	7
	Betula utilis jacquemontii	12-14cm	350-425cm	Counted	3x Heavy Standard Clear Stem 175-200 RB	1
	Carpinus betulus	16-18cm	400-450cm	Counted	3x Extra Heavy Standard Clear Stem min. 200 RB	5
	Cornus controversa Variegata	60-80cm	Counted	Leader with Laterals 2 Brks BR	3	
	Cornus columna	10-12cm	300-350cm	Counted	2x Selected Standard Clear Stem 175-200cm 4 brks B	1
	Crataegus laevigata	16-18cm	400-450cm	Counted	3x Extra Heavy Standard Clear Stem min. 200 RB	1
	Maevia strelitziae	11-12cm	200cm	Counted	Multi-Stemmed B	1
	Malus sylvestris	12-14cm	350-425cm	Counted	3x Heavy Standard Clear Stem 175-200 RB	5
	Malus sylvestris	6-8cm	250-300cm	Counted	2x Light Standard Clear Stem 150-175 cm 3 brks B	2
	Prunus avium	12-14cm	350-425cm	Counted	3x Heavy Standard Clear Stem 175-200 RB	9
	Prunus padus	12-14cm	350-425cm	Counted	3x Heavy Standard Clear Stem 175-200 RB	7
	Prunus serrulata tibetica	300-350cm	Counted	Multi-stem; 3 stems minimum RB	2	
	Prunus serrulata 'Chanticleer'	16-18cm	400-450cm	Counted	3x Extra Heavy Standard Clear Stem min. 200 RB	2
	Quercus robur	16-18cm	400-450cm	Counted	3x Extra Heavy Standard Clear Stem min. 200 RB	7
	Sorbus aucuparia	6-8cm	250-300cm	Counted	2x Light Standard Clear Stem 150-175cm 3 brks B	2

Shrubs	Species Name	Height	Pot Size	Specification	Density	No.
	Cornus sanguinea	60-80cm	1	Transplant Branched 5 brks BR Maintained as hedge	0.5Ctr Double Staggered at 0.3m offset	137
	Cornus sanguinea 'Midwinter Fire'	60-80cm	0/1/1	Transplant cutting raised branched 3 breaks BR	3/m²	137
	Cornus avellana	60-80cm	1	Transplant Branched 5 brks BR Maintained as hedge	0.5Ctr Double Staggered at 0.3m offset	20
	Crataegus monogyna	60-80cm	1+1	Transplant seed raised BR	3/m²	25
	Euonymus europaeus	60-80cm	1	Transplant Branched 5 brks BR Maintained as hedge	0.5Ctr Double Staggered at 0.3m offset	20
	Hebe 'Red Edge'	20-30cm	3L	Bushy 5 brks C	3/m²	43
	Lavandula angustifolia 'Hidcote'	30-40cm	3L	Bushy 5 brks C	3/m²	43
	Lonicera nitida	30-40cm	3L	Bushy 4 breaks C	3/m²	137
	Lonicera pileata	20-30cm	5L	Branched C	3/m²	19
	Maehonia 'Soft Caress'	30-40cm	3L	Bushy 5 brks C	3/m²	46
	Philadelphus 'Snowbelle'	80-100cm	10L	Branched C Plant as specimen	0.3Ctr	4
	Prunus lusitanica	80-100cm	10L	Branched 8 brks Bushy BR Maintained as hedge	0.3Ctr	4
	Rubus fruticosus	30-40cm	2L	Branched 3 breaks C Understorey Mix	3/m²	14
	Sarcococca confusa	20-30cm	5L	Branched C	3/m²	36
	Viburnum lantana	60-80cm	1	Transplant seed raised branched 3 breaks BR	3/m²	93
	Viburnum opulus	60-80cm	1	Transplant Branched 5 brks BR Maintained as hedge	0.5Ctr Double Staggered at 0.3m offset	20

Climbers	Species Name	Height	Pot Size	Specification	Density	No.
	Campsis tagliabuana 'Madame Galen'	100-150cm	10L	Several Shoots Caned 3/4 brks	Counted 7	
	Hedera helix 'Glacier'	3L	Caned C	Counted 11		
	Pileostegia viburnoides	3L	Caned C	Counted 5		

Herbaceous	Species Name	Height	Pot Size	Specification	Density	No.
	Anemone nemorosa	1-1.5L	Full Pot	Understorey Mix	3/m²	64
	Geranium robertianum	1-1.5L	Full Pot	Understorey Mix	3/m²	64
	Lamium maculatum 'Beacon Silver'	2L	Full Pot	3/m²	53	
	Luzula sylvatica	1-1.5L	Full Pot	Understorey Mix	3/m²	64

Ferns	Species Name	Height	Pot Size	Specification	Density	No.
	Dryopteris filix-mas	2L	Full Pot	Understorey Mix	3/m²	52

Grasses	Species Name	Height	Pot Size	Specification	Density	No.
	Carex divulsa	1-1.5L	Full Pot	3/m²	37	
	Deschampsia cespitosa	2L	Full Pot	3/m²	70	
	Hakonechloa macra 'Mulle Wine'	3L	Full Pot	3/m²	53	



Rev	Date	Details	Drawn
E	23/12/25	Comments	IS
D	22/12/25	Draft	IS
C	19/12/25	Draft	IS
B	18/12/25	Draft	IS
A	17/12/25	Draft	RHP
Rev	Date	Details	Drawn



HEAD OFFICE
Roudbourne Rail Business Centre, Grange Lane,
Malmesbury, SN16 0ES
Tel: 01666 625646

Unit 7, Godalming Business Centre, Woolsack Way,
Godalming, GU7 1HP
Tel: 01483 425714

Suite 6, Crescent House, Yonge Close,
Eastleigh, SO50 95X
Tel: 02382 026300

email: mail@acdenv.co.uk
www.acdenvironmental.co.uk

scheme: Somerton Farmyard, Fritwell
Road, Somerton, Oxfordshire

client: Laxton Properties

drawing: Landscape Proposals

date: December 2025

scale: 1:200@A1

drawing no: PRI24625 11-4 of 4

drawn: RHP checked: IS

Copyright of ACD Environmental Ltd. All rights described in Chapter IV of the Copyright, Designs and Patents Act 1988 have been generally asserted. 2011. Copyright of this plan remains with ACD until all fees have been paid in full.