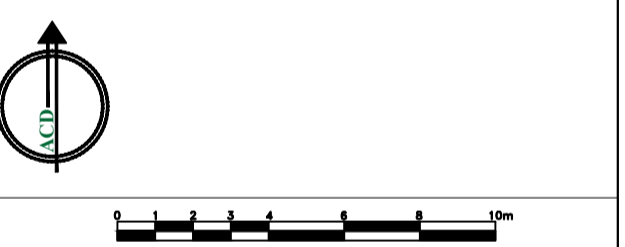
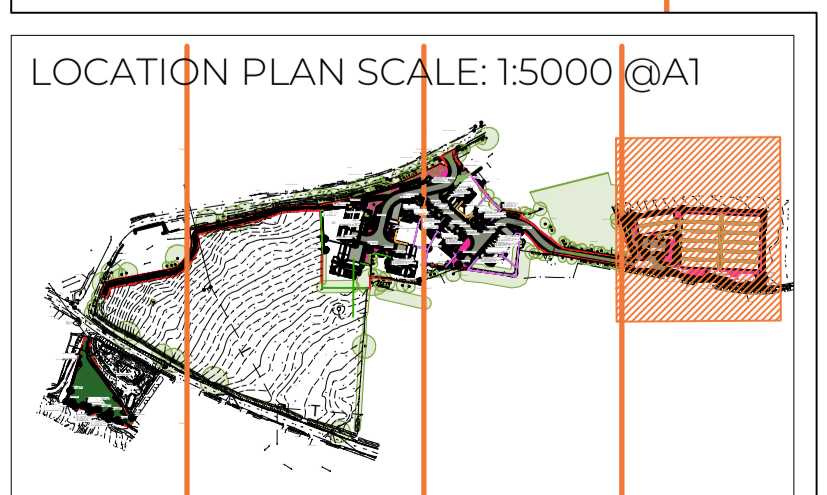
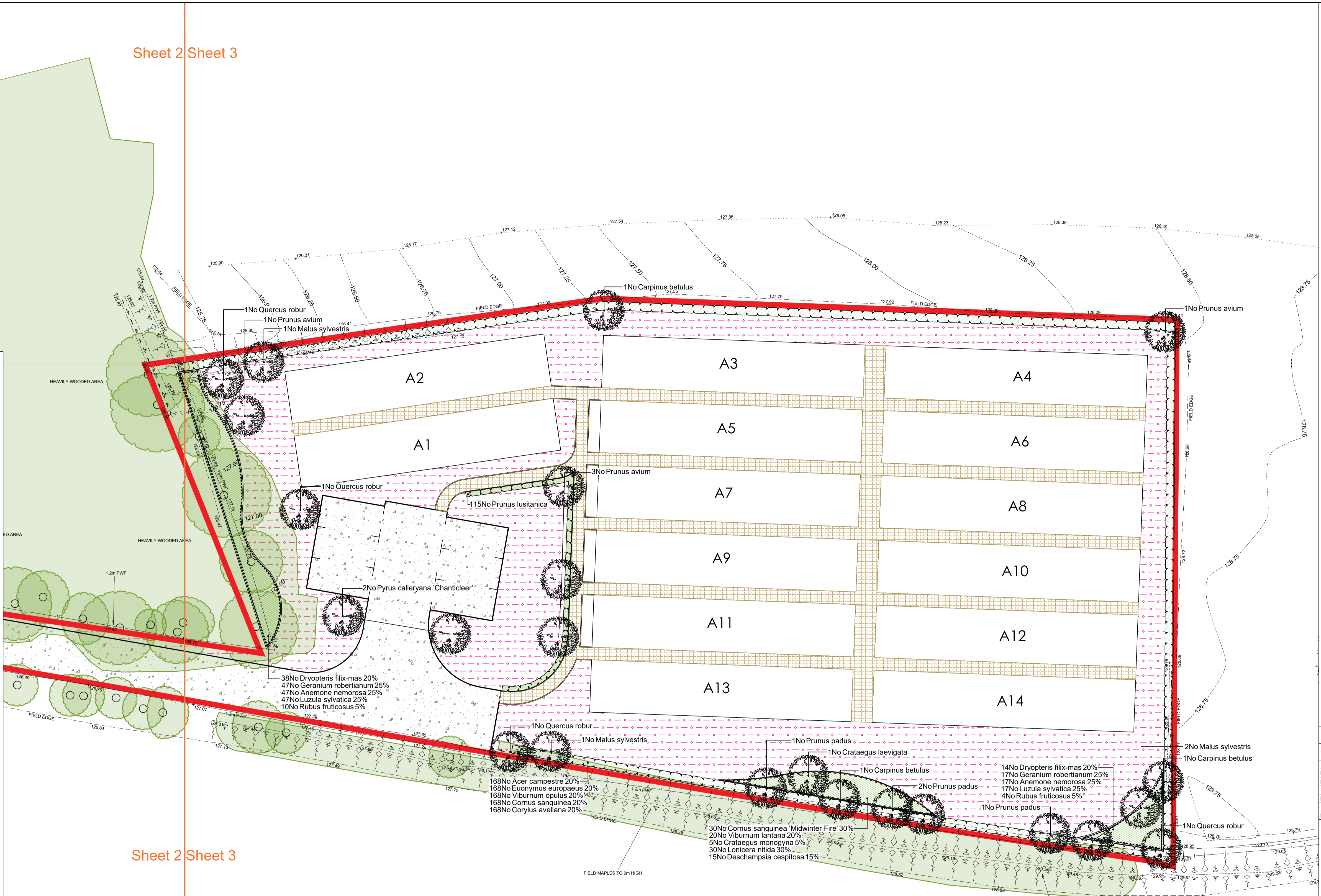


- Legend**
- Existing trees to be retained and protected during construction.
 - Proposed standard tree planting. For Tree Pit Detail, see Sheet 1.
 - Proposed multi-stem tree planting.
 - Proposed specimen shrub planting.
 - Proposed climbing plants to be trained up adjacent wall/ fence with galvanised wires and hook set 250mm apart with support canes removed prior to planting.
 - Proposed single species hedge planting to be planted in a single row at 300mm centres. To be maintained at 1m height.
 - Proposed mixed native hedge planting to be planted in a double staggered row 300mm apart and at 500mm centres in each row. To be maintained at up to 3.0m height.
 - Proposed decorative mix shrub planting (plots) to be planted in groups of 2, 3, 5, 8 no. of each species and to receive 75mm bark mulch after planting operations.
 - Proposed decorative mix shrub planting (POS) to be planted in groups of 2, 3, 5, 8 no. of each species and to receive 75mm bark mulch after planting operations.
 - Proposed grass areas to receive good quality amenity grass turves laid in line with good horticultural practices.
 - Proposed EM3 Special General Purpose Meadow Mixture. Supplied by Emorsgate Seeds or equivalent.
 - Existing grass surface to be retained and bare ground patches to be seeded with EG22 Strong Lawn Mixture supplied by Emorsgate Seeds or equivalent.
 - Proposed asphalt surface or equivalent.
 - Proposed block paving 200x100x80mm grey colour, herringbone pattern.
 - Proposed flag paving 400x400x30mm, grey colour, stack bond.
 - Proposed Breendon self binding gravel.
 - Proposed 1.8m high Stone wall, to receive timber gate where indicated.
 - Proposed 1.8m high Timber Venetian Hit and Miss Fence, to receive matching style gates where indicated, supplied by Jacksons Fencing. 100x100mm hole cut out in gravel board to allow hedgehog movement through gardens.
 - Proposed 1.5m high Timber Venetian Hit and Miss Fence, to receive matching style gates where indicated, supplied by Jacksons Fencing. 100x100mm hole cut out in gravel board to allow hedgehog movement through gardens.
 - Proposed 1.5m high Timber Morticed Post and Rail Fence, to receive matching style gates where indicated, supplied by Jacksons Fencing.
 - Proposed Seat. Roslin Steel Framed Tiber Seat with FSC Iroko slats, no armrests, as supplied by Broxap Ltd.
 - Proposed Litter Bin. Derby Compact Litter Bin with flat top, as supplied by Broxap Ltd.
 - Cut lines.



Rev	Date	Details	Drawn
E	23/12/25	Comments	IS
D	22/12/25	Draft	IS
C	19/12/25	Draft	IS
B	18/12/25	Draft	IS
A	17/12/25	Draft	RHP



HEAD OFFICE
Rodbourne Rail Business Centre, Grange Lane,
Malmesbury, SN16 0ES
Tel: 01666 825646

Unit 7, Godalming Business Centre, Woolsack Way,
Godalming, GU7 1HP
Tel: 01483 425714

Suite 6, Crescent House, Yonge Close,
Eastleigh, SO50 95X
Tel: 02382 026300

email: mail@acdenv.co.uk
www.acdenvironmental.co.uk

scheme: Somerton Farmyard, Fritwell
Road, Somerton, Oxfordshire

client: Laxton Properties
drawing: Landscape Proposals
date: December 2025
scale: 1:200@A1
drawing no: PR124625 11-3 of 4
drawn: RHP checked: IS