

**North Arms House, Wroxton – Schedule of Windows existing & proposed.**

In support of the application, the following schedule of existing and proposed window joinery is submitted.

The building ceased to be a public house more than 12 years ago. Prior to that not untypically for a public house, the maintenance would have been at best expedient. Since then the building generally suffered unarrested deterioration.

Windows to be replaced would be entirely replicated with the exception of FF01; FF02 and Ff07 where the opportunity would be taken to restore opening side hung casements and top hung vents to improve ventilation.

Similarly existing windows GFW 13 and GFW 15 are direct glazed having lost original opening casements through time. These will be restored with additional horizontal glazing bars to complement the house windows throughout .

All replicated windows would be double glazed with 12mm heritage units as discussed with the Conservation Officer on site during the initial consultation process.



*Fig.1 – Existing South Elevation (part)*



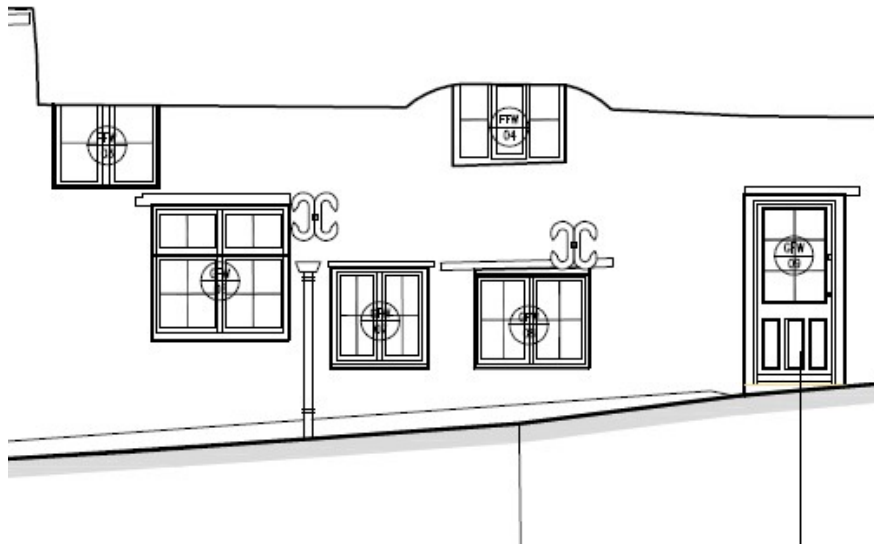
*Fig.2 – GFW 022*

Late C20 imitation mullioned and transomed window



*Fig.3 – GFW 04*

Late C20 imitation mullioned and transomed window



*Fig.1 – Existing (& Proposed) South Elevation (part)*



*Fig.5 – GFW 06*

C20 imitation mullioned and transomed window



*Fig.6 - GFW 07*

C20 modern frame with machine routed "moulding" with curved radius mitres



*Fig.7 - GFW 08*

C20 modern frame



*Fig.8 - GFW 10*

Late C20 "cottage style" frame with storm proof rebates and asymmetric top hung vent



*Fig.9 - GFW 11*

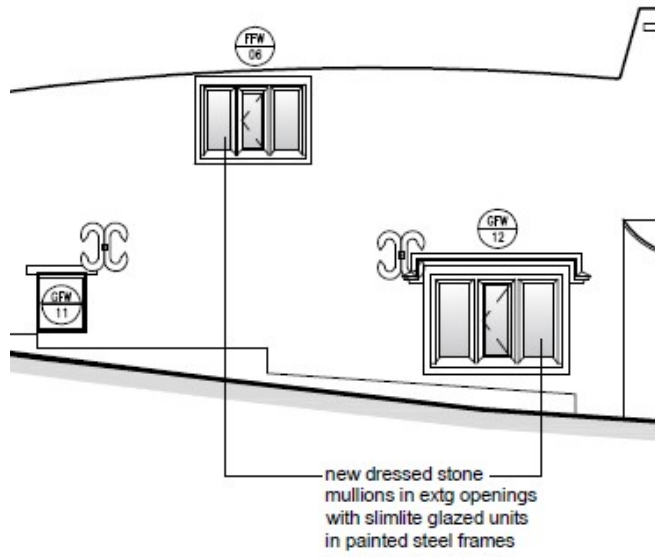


Fig.10 – Consented North Elevation (part)

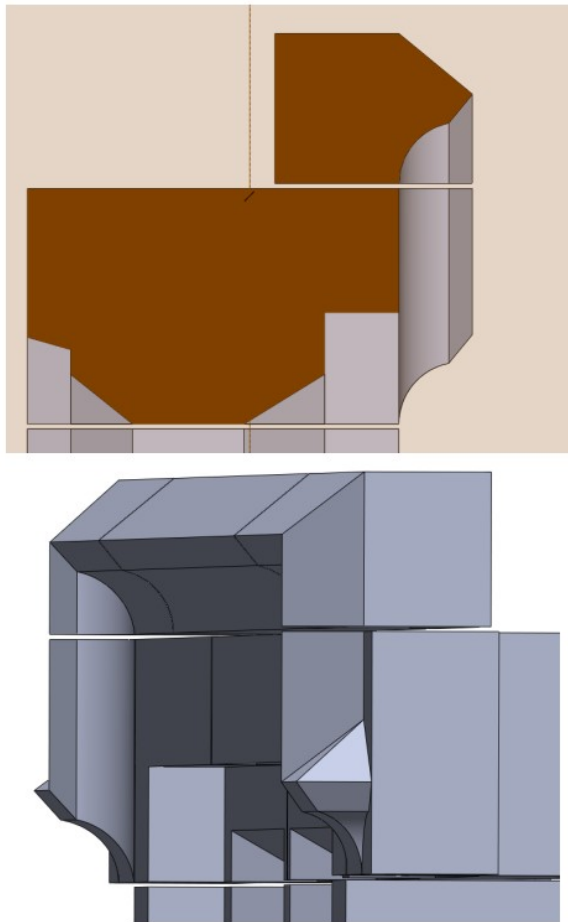
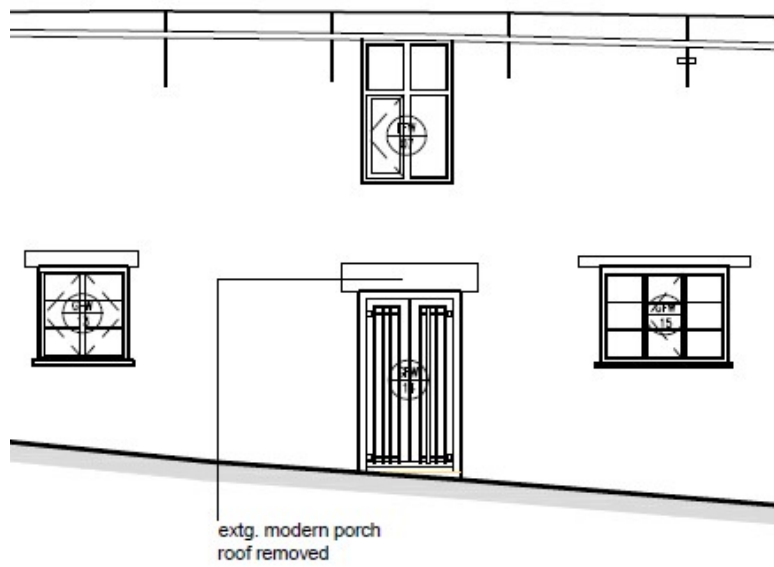


Fig.11 - GFW 11 Stone mullioned widow – proposed head moulding



*Fig.12 – Proposed South Elevation (part)*



*Fig.13 - GFW 13*

C20 window opening cut into ashlar stonework with simple timber lintel and concrete cill. Side hung casements lost and direct glazed



*Fig.14 - GFW 15*

C20 window opening cut into ashlar stonework with simple timber lintel and concrete cill. Side hung casements lost and direct glazed. Shutters added for privacy.



*Fig 15 - FFW 01*

C20 imitation mullioned and transomed window – side hung casements and top hung vents lost, and remaining frame direct glazed. Identical frames retaining opening casements evident at Raydon Hill House – *ref. Appendix*



*Fig.16 - FFW 02*

C20 imitation mullioned and transomed window – side hung casements and top hung vents lost, and remaining frame direct glazed. Identical frames retaining opening casements evident at Raydon Hill House – *ref. Appendix*



**Fig.17 - FFW 03**

C20 window altered with introduction of centre mullion to receive modern bathroom partition



**Fig 18 - FFW 04**

C20 window altered with introduction of modern centre side hung casement



*Fig. 19 - FFW 07*

C20 imitation mullioned and transomed window – side hung casement and top hung vents lost, and remaining frame direct glazed. Identical frames evident at Raydon Hill House – *ref. Appendix*

**APPENDIX**



*Fig. Ax 1 –Raydon Hill House (c. 2006)*



*Fig. Ax 2 –Raydon Hill House (c.2006)*

The identical windows at Raydon Hill House, Mills Lane (35metres North Esat of North Arms House) had retained their opening side hung casements and top hung vents into early C21

List Entry Number 1046787 dated 1955; amended 1988

" *Entrance is flanked by C20 imitation mullioned and transomed windows. First floor has 3 partly repaired wood mullioned and transomed windows. Stone flat arches....* "