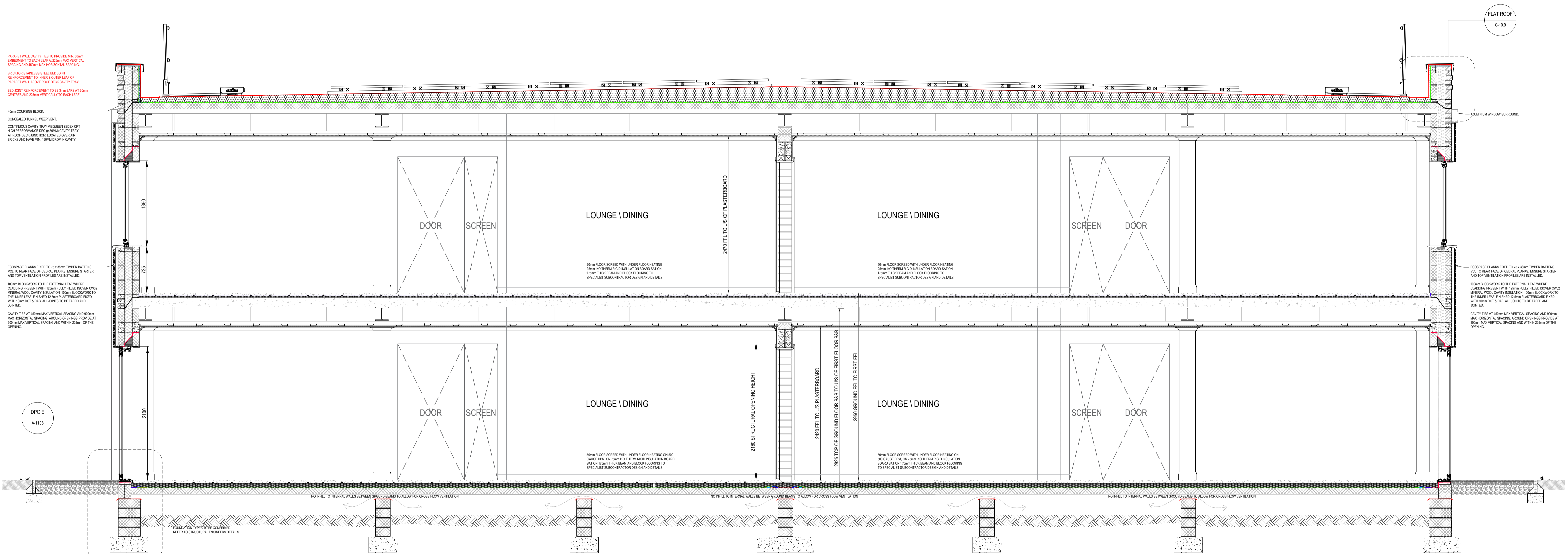
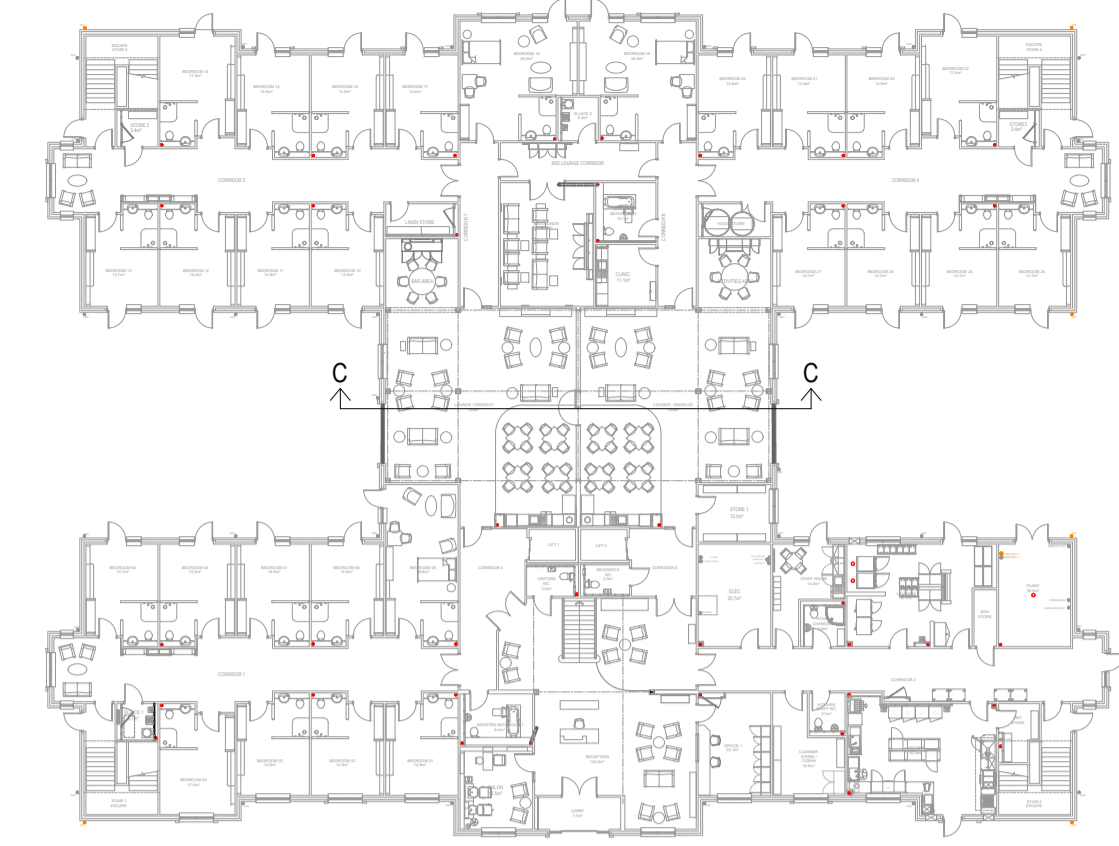


FOR DPC AND EAVES DETAILS REFER TO DRAWING C-10.9



PARAPET WALL CAVITY TIES TO PROVIDE MIN. 60mm EMBEDMENT TO EACH LEAF AT 250mm MAX VERTICAL SPACING AND 450mm MAX HORIZONTAL SPACING.
BRICK OR STAINLESS STEEL BED JOINT REINFORCEMENT TO INNER & OUTER LEAF OF PARAPET WALL ABOVE ROOF DECK CAVITY TRAY.
BED JOINT REINFORCEMENT TO BE 3mm BARS AT 80mm CENTRES AND 25mm VERTICALLY TO EACH LEAF.

40mm COURSEWORK BLOCK
CONDENSED TUNNEL WEEP VENT
CONTINUOUS CAVITY TRAY VSQUEEN ZIDEK OPT
HIGH PERFORMANCE DPC (DPM) CAVITY TRAY AT ROOF DECK JOINTS LOCATED OVER AIR BRICKS AND HAVE MIN. 150MM DROP IN CAVITY.

ECCOSPACE PLANKS FIXED TO 75 x 38mm TIMBER BATTENS, VLS TO REAR FACE OF GYPSUM BOARD, ENSURE STAPLES AND TOP VENTILATION PROFILES ARE INSTALLED.
100mm BLOCKWORK TO THE EXTERNAL LEAF WHERE CLADDING IS PRESENT WITH 15mm FULLY FLEED COVER CW2 MINERAL WOOL CAVITY INSULATION, 100mm BLOCKWORK TO THE INNER LEAF, FINISHED 15mm PLASTERBOARD (F10) WITH 10mm DOT & DAB. ALL JOINTS TO BE TAPED AND JOINTED.
CAVITY TIES AT 450mm MAX VERTICAL SPACING AND 900mm MAX HORIZONTAL SPACING AROUND OPENINGS PROVIDE AT 200mm MAX VERTICAL SPACING AND WITHIN 25mm OF THE OPENING.

ECCOSPACE PLANKS FIXED TO 75 x 38mm TIMBER BATTENS, VLS TO REAR FACE OF GYPSUM BOARD, ENSURE STAPLES AND TOP VENTILATION PROFILES ARE INSTALLED.
100mm BLOCKWORK TO THE EXTERNAL LEAF WHERE CLADDING IS PRESENT WITH 15mm FULLY FLEED COVER CW2 MINERAL WOOL CAVITY INSULATION, 100mm BLOCKWORK TO THE INNER LEAF, FINISHED 15mm PLASTERBOARD (F10) WITH 10mm DOT & DAB. ALL JOINTS TO BE TAPED AND JOINTED.
CAVITY TIES AT 450mm MAX VERTICAL SPACING AND 900mm MAX HORIZONTAL SPACING AROUND OPENINGS PROVIDE AT 200mm MAX VERTICAL SPACING AND WITHIN 25mm OF THE OPENING.

SECTION C-C

REV	DATE	DETAILS OF AMENDMENTS	DRAWN

LNT Construction
Unit 2, Helios 47, Isabella Road, Garforth, Leeds, LS25 2DY
Tel: 0113 385 3850

SITE: GRAVEN HILL
BICESTER

TITLE: BUILDING SECTIONS
SECTION C-C

SCALE: 1:30 @ A1 DRAWN: DB DATE: 18.06.25

DRAWING NO.: 416 C-10.3 REVISION: -

DRAWING STATUS: CONSTRUCTION