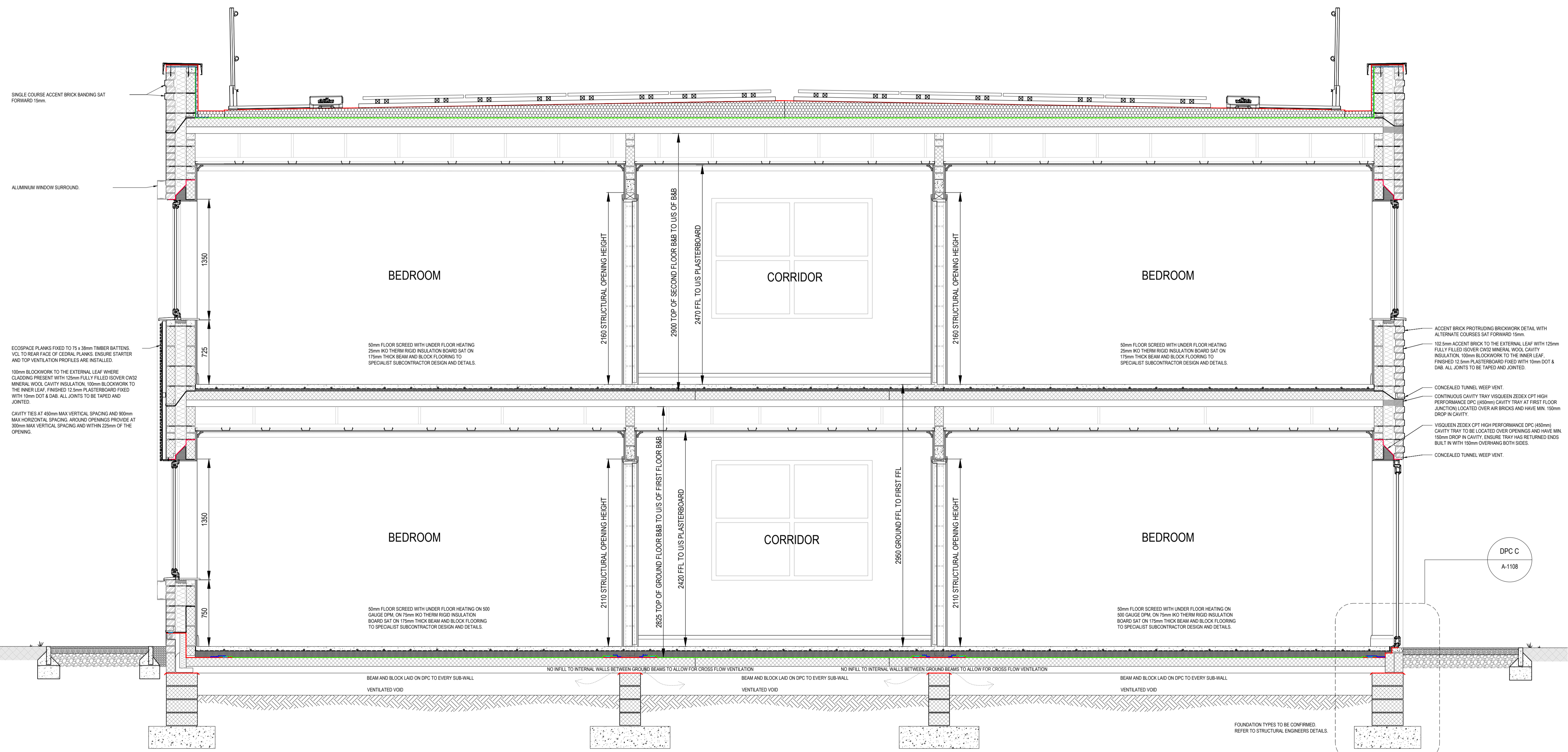
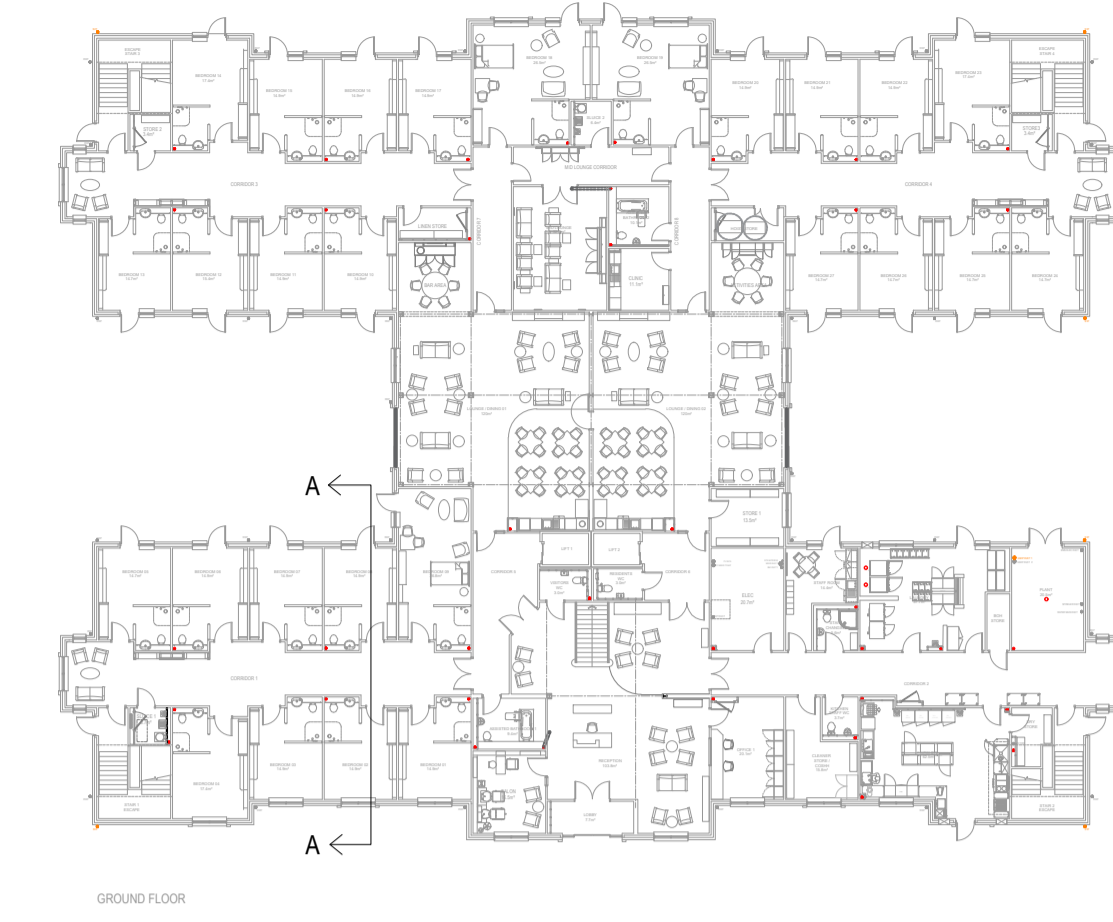


FOR DPC AND EAVES DETAILS REFER TO DRAWING C-10.9



SINGLE COURSE ACCENT BRICK BANDING SAT FORWARD 15mm.

ALUMINIUM WINDOW SURROUND.

ECCOSPAC PLANKS FIXED TO 75 x 38mm TIMBER BATTENS. V.O.C. TO REAR FACE OF CEILING PLANKS ENSURE STARTER AND TOP VENTILATION PROFILES ARE INSTALLED.

100mm BLOCKWORK TO THE EXTERNAL LEAF WHERE CLADDING PRESENT WITH 125mm FULLY FILLED ISOVER OW2 MINERAL WOOL CAVITY INSULATION. 100mm BLOCKWORK TO THE INNER LEAF. FINISHED 12.5mm PLASTERBOARD FIXED WITH 10mm D.O.T & DAB. ALL JOINTS TO BE TAPED AND JOINTED.

CAVITY TIES AT 450mm MAX VERTICAL SPACING AND 900mm MAX HORIZONTAL SPACING AROUND OPENINGS PROVIDE AT 300mm MAX VERTICAL SPACING AND WITHIN 225mm OF THE OPENING.

ACCENT BRICK PROTRUDING BRICKWORK DETAIL WITH ALTERNATE COURSES SAT FORWARD 15mm.

102.5mm ACCENT BRICK TO THE EXTERNAL LEAF FULLY FILLED ISOVER OW2 MINERAL WOOL CAVITY INSULATION. 100mm BLOCKWORK TO THE INNER LEAF. FINISHED 12.5mm PLASTERBOARD FIXED WITH 10mm D.O.T & DAB. ALL JOINTS TO BE TAPED AND JOINTED.

CONCEALED TUNNEL WEEP VENT.

CONTINUOUS CAVITY TRAY VSQUEEN ZEDEX OPT HIGH PERFORMANCE DPC (400mm) CAVITY TRAY AT FIRST FLOOR JUNCTION LOCATED OVER AIR BRICKS AND HAVE MIN. 150mm DROP IN CAVITY.

VSQUEEN ZEDEX OPT HIGH PERFORMANCE DPC (400mm) CAVITY TRAY TO BE LOCATED OVER OPENINGS AND HAVE MIN. 150mm DROP IN CAVITY. ENSURE TRAY HAS RETURNED ENDS BUILT IN WITH 150mm OVERHANG BOTH SIDES.

CONCEALED TUNNEL WEEP VENT.

DPC C  
A-1108

REV	DATE	DETAILS OF AMENDMENTS	DRAWN

**LNT Construction**  
Unit 2, Helios 47, Isabella Road, Garforth, Leeds, LS25 2DY  
Tel: 0113 385 3850

SITE: GRAVEN HILL  
BICESTER

TITLE: BUILDING SECTIONS  
SECTION A-A

SCALE: 1:25 @ A1    DRAWN: DB    DATE: 18.06.25

DRAWING NO.: 416 C-10.1    REVISION: -

DRAWING STATUS: CONSTRUCTION