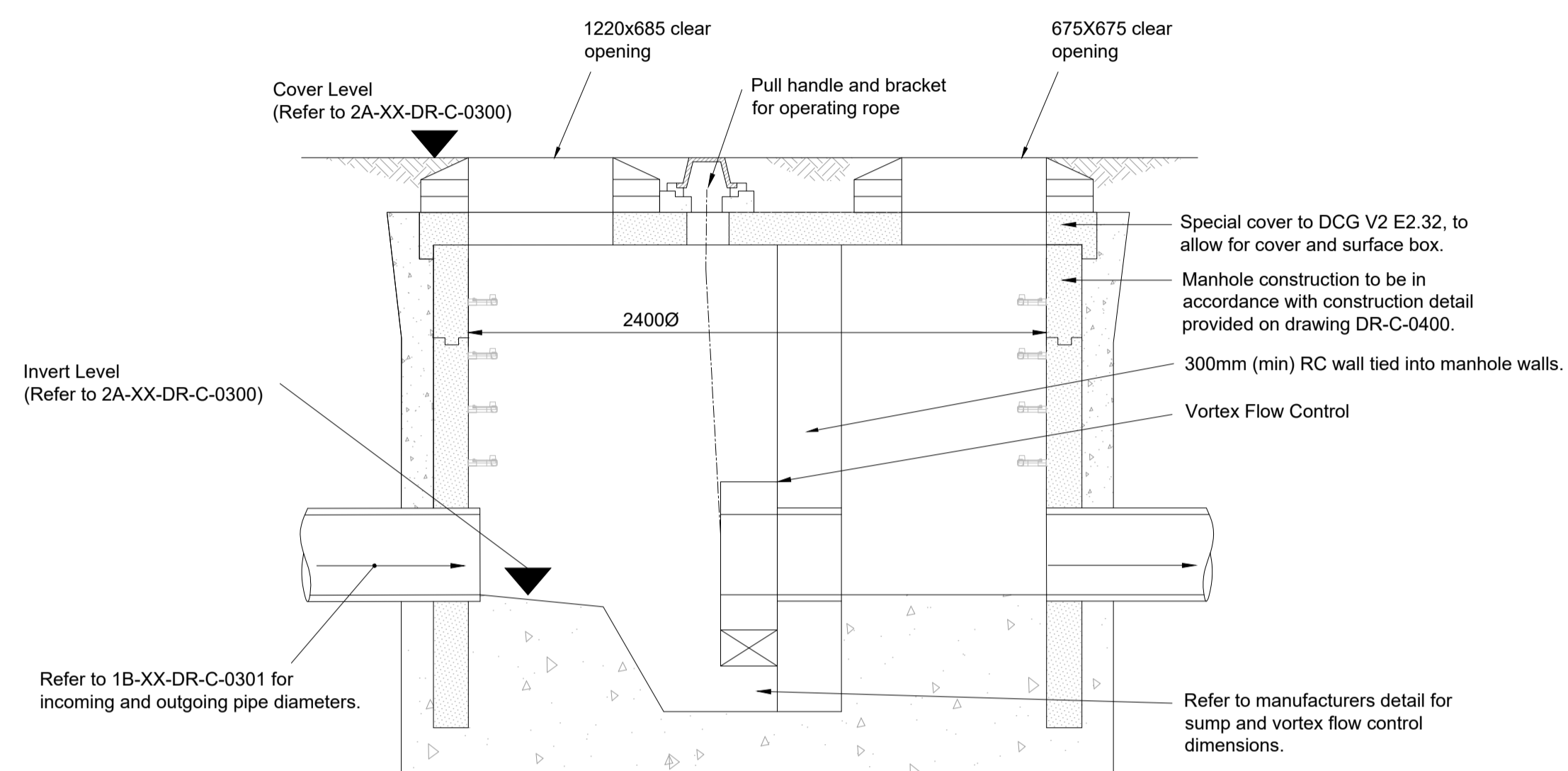
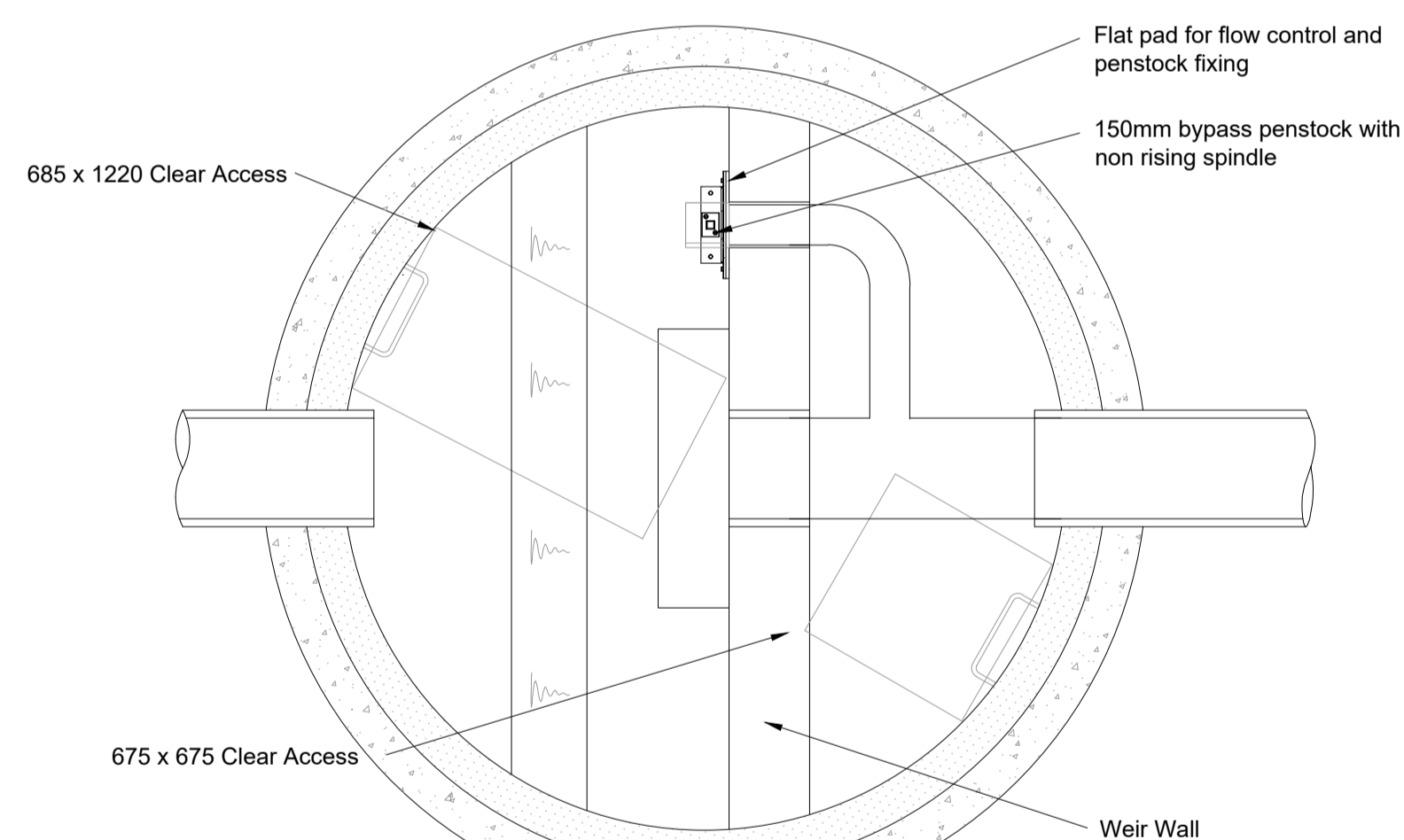


Notes:

1. Do not scale this drawing
2. The planning, design and construction of sewers shall be in accordance with Sewerage Sector Guidance Appendix C - 'Design and Construction Guidance'.
3. All sewers to be laid soffit to soffit unless otherwise shown.
4. Compliance with Health & Safety matters on any trench/manhole is obligatory and a permit to enter a confined space is required when connecting site drainage to the existing public sewerage system. A permit to enter a confined space will be obtained from the local water authority prior to the works commencing on any public sewerage system.
5. All pipes to be plastic unless otherwise shown.
6. Ladders to be galvanised mild steel to BS 4211.
7. Step rungs to be double width, plastic encapsulated mild steel. Distance between step rungs to be 250-300mm.
8. Precast concrete rungs will not be cut under any circumstance.
9. Any and all construction undertaken prior to relevant technical approval is done so at risk.



Indicative Section View



Plan View

### TYPICAL FLOW CONTROL CHAMBER

Precast Flow Control chambers can be provided, subject to approval by AWIN  
Scale 1:25

REVISIONS

Rev	Date	Description	By	Ckd	App
C01	13/09/24	Roads and sewers issued for construction.	JH	OD	OD
P02	09/07/24	Flow control updated to include weir wall	OD	OD	OD
P01	08/03/24	First Issue.	BT	JAC	JAC

Roads and sewers issued for construction at request of the client. Note site is subject to planning approval, S104, and S38. Any construction is at risk, and subject to change

**Hydrock** OVER COURT BARNES  
OVER LANE  
ALMONDSBURY  
BRISTOL  
BS32 4DF  
T: +44 (0) 1454 619533  
e: bristol@hydrock.com

CLIENT  
CALA HOMES

PROJECT  
HIMLEY VILLAGE,  
BICESTER,  
OXFORDSHIRE

TITLE  
PHASE 2A  
ADOPTABLE DRAINAGE  
CONSTRUCTION DETAILS  
SHEET 3

HYDROCK PROJECT NO. C-27141-C	SCALE @ A1 AS SHOWN	STATUS CONSTRUCTION	STATUS D4
DRAWING NO. (PROJECT CODE-ORIGINATOR-ZONE-LEVEL-TYPE-ROLE-NUMBER) 27141-HYD-2A-XX-DR-C-0402		REVISION	REVISION C01