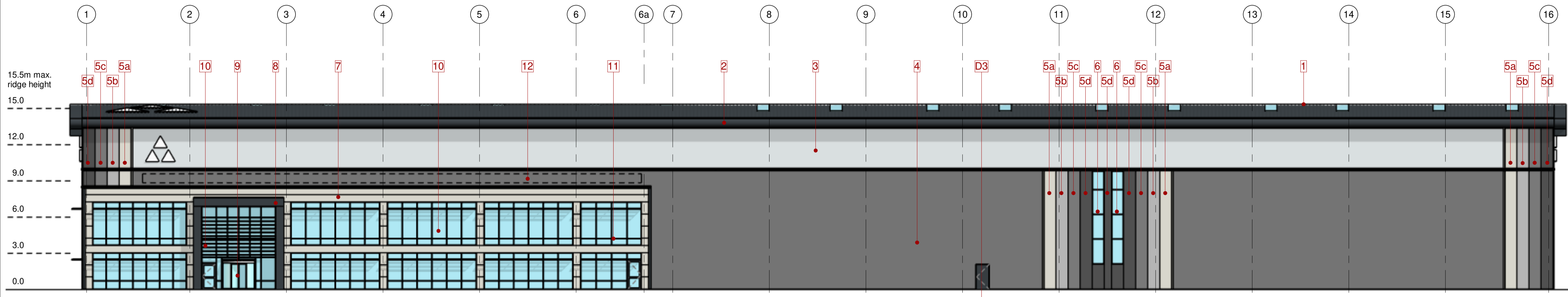
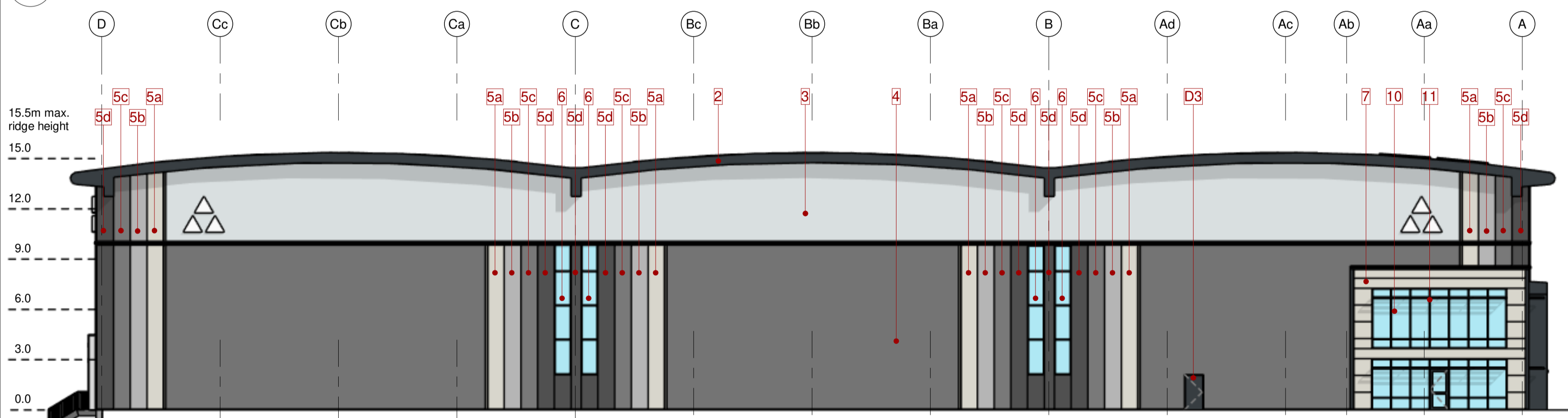


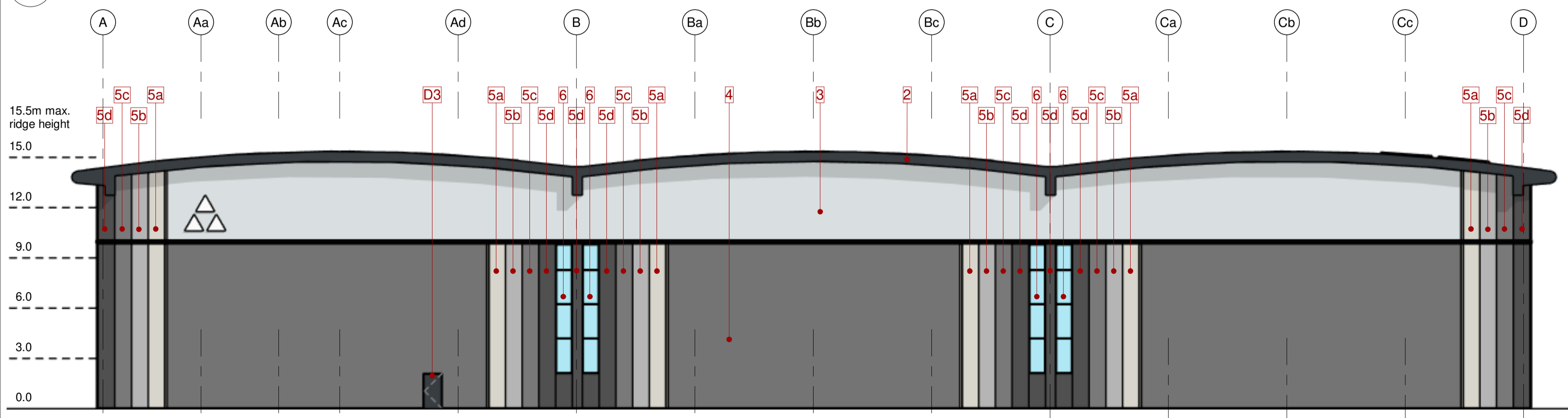
1 North-East Elevation
1 : 200



2 South-West Elevation
1 : 200



3 North-West Elevation
1 : 200



4 South-East Elevation
1 : 200

Schedule of Materials:

Warehouse

- 1 Built up roof system with profiled steel outer sheet and includes approximately 10% coverage by proprietary rooflights. External finish and colour: HPS 200 Ultra; Anthracite RAL 7016.
- 2 Eaves fascia and soffit in pressed metal. Finish and colour: HPS 200 Ultra; Anthracite RAL 7016.
- 3 Upper level horizontally laid trapezoidal cladding: External finish and colour: HPS 200 Ultra; Albatros RAL 240 80 05.
- 4 Lower level vertically laid trapezoidal cladding: External finish and colour: HPS 200 Ultra; Alaska Grey RAL 7000.
- 5a Graduated vertically fitted composite cladding panels: External finish and colour: Colorcoat Prisma; Hamlet RAL 9002.
- 5b Colorcoat Prisma; Oyster RAL 7035.
- 5c Colorcoat Prisma; Alaska Grey RAL 7000.
- 5d Colorcoat Prisma; Slate Grey RAL 7012. (Note: panels to be full height without horizontal joints).
- 6 PPC frame curtain walling including tinted glazing. External colour: Anthracite RAL 7016.
- D1 Level entry door (4m wide x 5m high); insulated composite panel vertical lift door: Colour: HPS 200 Ultra; Anthracite RAL 7016.
- D2 Oversized level entry door (5m wide x 6m high); insulated composite panel vertical lift door: Colour: HPS 200 Ultra; Anthracite RAL 7016.
- D3 Personnel door; steel faced doors Colour: HPS 200 Ultra; Anthracite RAL 7016.
- D4 Dock levellers with overhead sectional doors and dock door access Colour coated HPS 200 Ultra; Anthracite RAL 7016 in precast concrete panel walling system. (Note: dock levellers to have a factory applied paint finish Anthracite RAL 7016).

Offices

- 7 Horizontally spanning insulated composite cladding panels micro-rib finish. External finish and colour: XL Forte; Grey White RAL 9002.
- 8 Entrance feature portico: PPC aluminium. External finish and colour: Anthracite RAL 7016.
- 9 Revolving entrance doors with night doors. Overhead drum internal & external fascia, and all framing finish: brushed stainless steel.
- 10 PPC frame curtain walling including tinted glazing. External colour: Anthracite RAL 7016; Internal colour: White.
- 11 Brise Soleil fixed on windows and within Portico. Finish and colour: PPC in Anthracite RAL 7016.
- 12 Zone to accommodate louvres (louvres to be set out equally) Finish and colour: PPC Alaska Grey RAL 7000.

PL01: Planning Issue. WE.	16.10.24. RM.
P6: Dock types amended. Signage updated. WE.	14.08.24. RM.
P5: General update to dock area in line with comments and latest Blueprint Guide. WE.	10.07.24. WE.
P4: Dock door numbers and positions amended. WE.	28.06.24. WE.
P3: Building height reduced by 2.5m to achieve 12.5m clear internal. WE.	13.06.24. WE.
P2: Drawing updated to latest blueprint brochure (V14.2)	06.02.23 mu
P1: First issue	19.01.23 mu

Rev.	Date/Checked
The Old Rectory	Rectory Lane Milton Malsor
NORTHAMPTON	NN7 3AQ
t: +44 (0)1604 858916	f: +44 (0)1604 859123
www.peter-haddon.com	

Warehouse Development
Land Adjacent to Symmetry Park
A41, Bicester, Phase 3 - Unit F

GA Building Elevations	
Status	PLANNING
Drawn	MU Checked SH
Date	JANUARY 2023

Project Number:							
Project Code	Originator	Zone	Level	Type	Role	Job No.	Dwg. No.
BSP- pHp- 07- EL- DR- A- 4036- 300	PL01						

Scale@ A1
0 5m 10m As indicated
SCALE 1:200
Copyright reserved. Dimensions to be checked on site. Discrepancies to be reported before proceeding.