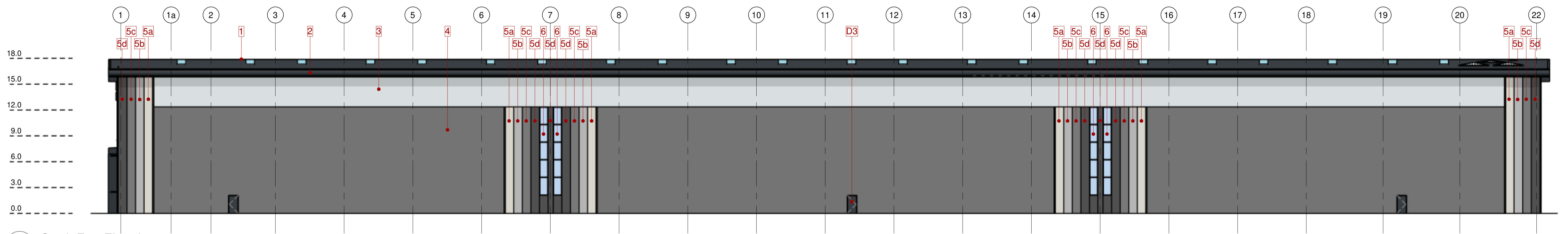
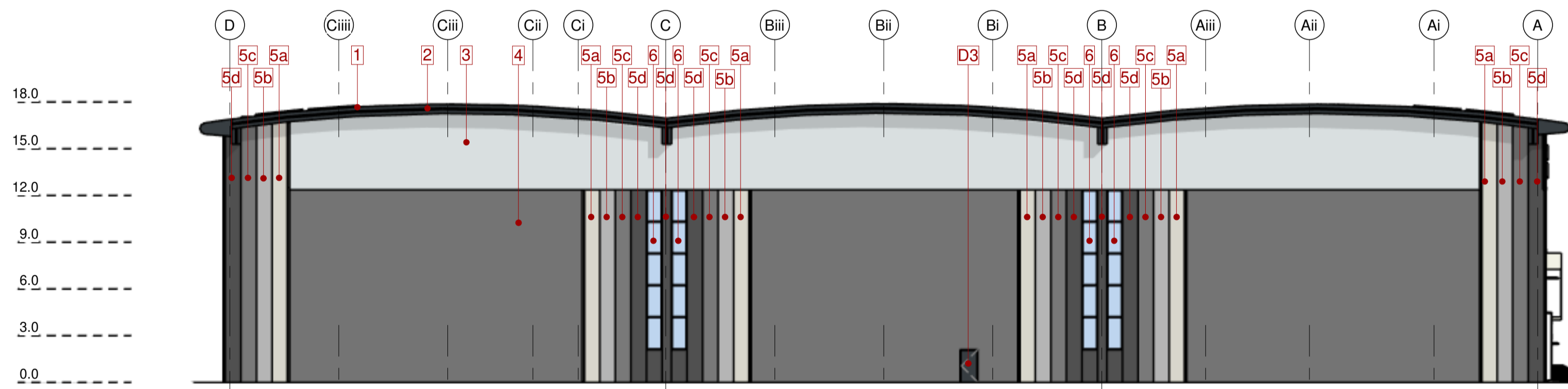


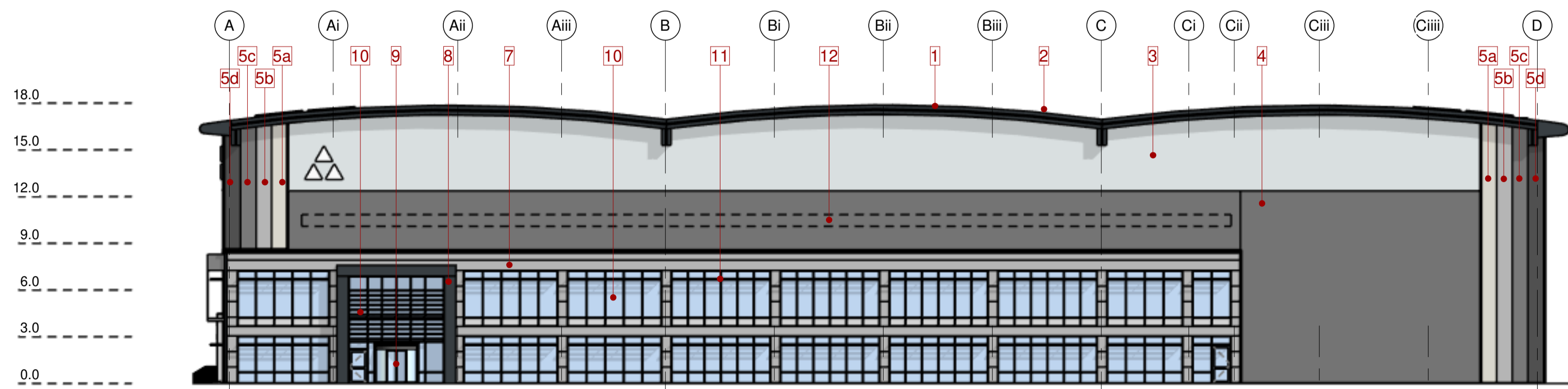
1 North-West Elevation  
1 : 250



2 South-East Elevation  
1 : 250



3 North-East Elevation  
1 : 250



4 South-West Elevation  
1 : 250

**Schedule of Materials:**

**Warehouse**

- 1 Built up roof system with profiled steel outer sheet and includes approximately 10% coverage by proprietary rooflights. External finish and colour: HPS 200 Ultra; Anthracite RAL 7016.
  - 2 Eaves fascia and soffit in pressed metal. Finish and colour: HPS 200 Ultra; Anthracite RAL 7016.
  - 3 Upper level horizontally laid trapezoidal cladding: External finish and colour: HPS 200 Ultra; Albatros RAL 240 80 05.
  - 4 Lower level vertically laid trapezoidal cladding: External finish and colour: HPS 200 Ultra; Alaska Grey RAL 7000.
  - 5a Graduated vertically fitted composite cladding panels: External finish and colour: Colorcoat Prisma; Hamlet RAL 9002.
  - 5b Colorcoat Prisma; Oyster RAL 7035.
  - 5c Colorcoat Prisma; Alaska Grey RAL 7000.
  - 5d Colorcoat Prisma; Slate Grey RAL 7012. (Note: panels to be full height without horizontal joints).
  - 6 PPC frame curtain walling including tinted glazing. External colour: Anthracite RAL 7016.
  - D1 Level entry door (4m wide x 5m high); insulated composite panel vertical lift door: Colour: HPS 200 Ultra; Anthracite RAL 7016.
  - D2 Oversized level entry door (5m wide x 6m high); insulated composite panel vertical lift door: Colour: HPS 200 Ultra; Anthracite RAL 7016.
  - D3 Personnel door; steel faced doors Colour: HPS 200 Ultra; Anthracite RAL 7016.
  - D4 Dock levellers with overhead sectional doors and dock precast access Colour coated HPS 200 Ultra; Anthracite RAL 7016 in precast concrete panel walling system. (Note: dock levellers to have a factory applied paint finish Anthracite RAL 7016).
- Offices**
- 7 Horizontally spanning insulated composite cladding panels micro-rib finish. External finish and colour: XL Forte; Grey White RAL 9002.
  - 8 Entrance feature portico: PPC aluminium. External finish and colour: Anthracite RAL 7016.
  - 9 Revolving entrance doors with night doors. Overhead drum internal & external fascia, and all framing finish: brushed stainless steel.
  - 10 PPC frame curtain walling including tinted glazing. External colour: Anthracite RAL 7016; Internal colour: White.
  - 11 Brise Soleil fixed on windows and within Portico. Finish and colour: PPC in Anthracite RAL 7016.
  - 12 Zone to accommodate louvres (louvres to be set out equally) Finish and colour: PPC Alaska Grey RAL 7000.

PL01: Planning Issue. WE.	16.10.24. RM.
P5: Dock types amended. WE.	14.08.24. WE.
P4: Dock door types and locations amended. WE.	28.06.24. WE.
P3: Drawing updated to latest blueprint brochure (V14.2)	06.02.23 mu
P2: 2no. standard dock levellers changed to double deck dock levellers & personnel door colour changed to Anthracite	31.01.23 mu
P1: First issue	30.01.23 mu

Rev.	Date/Checked
The Old Rectory Rectory Lane Milton Malsor NORTHAMPTON NN7 3AQ t: +44 (0)1604 858916 f: +44 (0)1604 859123 www.peter-haddon.com	

Warehouse Development  
Land Adjacent To Symmetry Park  
A41, Bicester, Phase 3 - Unit E

GA Building Elevations	
Status	PLANNING
Drawn	AH Checked SH
Date	JANUARY 2023
Project Number:	
Project Code	Originator Zone Level Type Role Job No. Dwg No. Revision
BSP- PHP- 06- EL- DR- A- 4036- 300	PL01
Scale@ A1	As indicated
0 5m 10m	SCALE 1:250
Copyright reserved. Dimensions to be checked on site. Discrepancies to be reported before proceeding.	