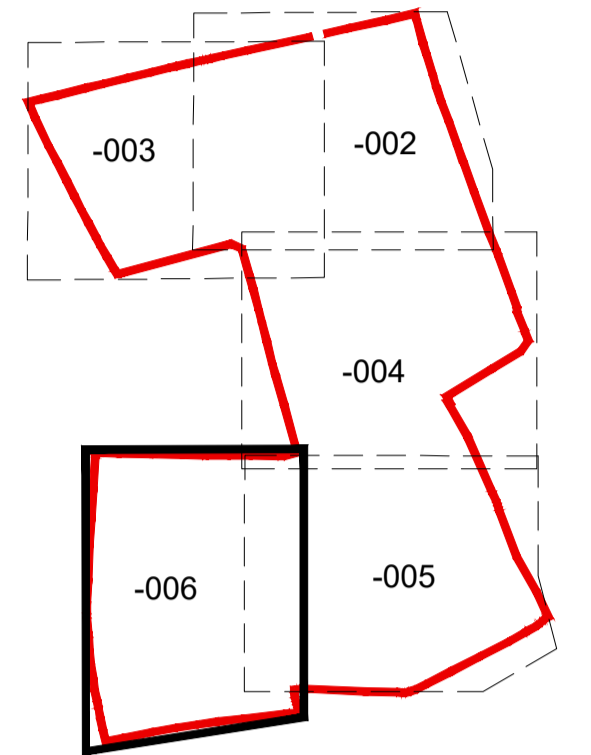


THIS DRAWING IS TO BE READ IN CONJUNCTION WITH SEPARATE GROUP / SITE SPECIFIC CONSTRUCTION NOTES AND MATERIALS SPECIFICATION.

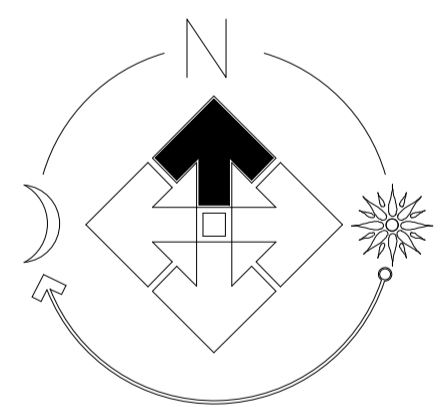
DRAWING NOTES
All tree and shrub locations and species must be taken into consideration by the project Structural Engineer to ensure that foundation design accords with the specifications set out in Chapter 4 of the NHBC Standards. The Landscape Contractor must ensure that plant material is planted in the locations shown and with NO SUBSTITUTIONS made without consulting the Group Landscape Design Department. It is the Landscape Contractor's responsibility to ensure that all underground services have been located and identified in advance of tree pit excavation so that no services are damaged or compromised by tree planting. Any changes to tree positions, species or specifications must be approved by the Group Landscape Design Department. Underground service strips are to be kept free of all plant material. Contractors must comply with all Health and Safety regulations and be aware of project/site specific information including referring to the information set out in the CDM drawings.

SHEET LAYOUT LOCATION PLAN
NOT TO SCALE

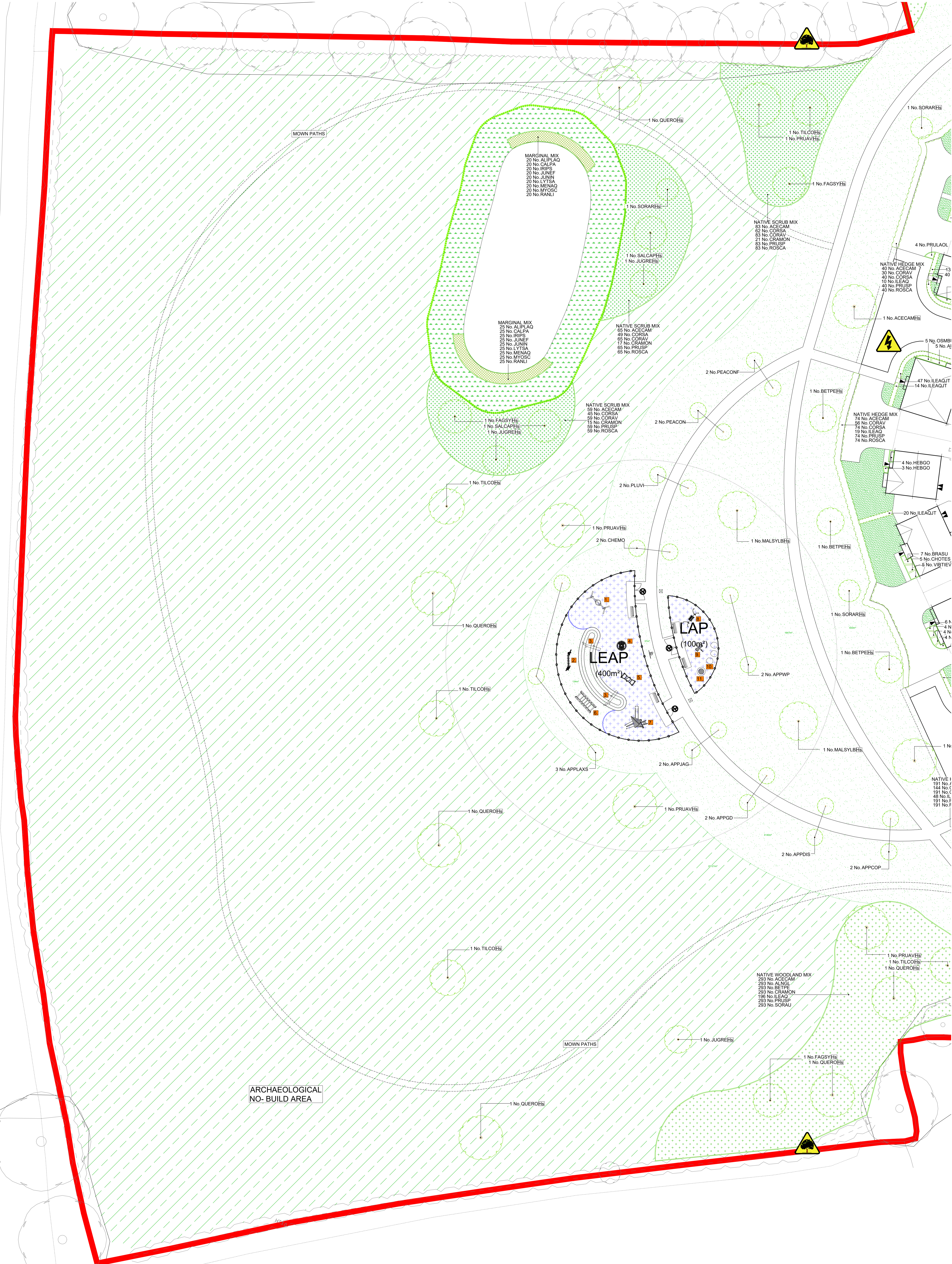


LEGEND

- EXISTING TREES/HEDGES
With Root Protection Area To be retained
- PROPOSED TREES
Extra Heavy/Heavy Standard See Schedule
- ORNAMENTAL HEDGE
See Schedule
- NATIVE HEDGE
See Schedule
- PROPOSED PLANTING
Shrubs/Herbaceous/Grasses See Schedule
- TURF
with area (m²)
- AMENITY GRASS AREAS
Mow Tolerate Tallgrass Mixture Emorgate EG22 sown at 25g/m² kept mown short to 40mm
- WILDFLOWER MEADOW
Special General Purpose Meadow Mixture Emorgate EM3 sown at 4 g/m² Erving grassland to be retained and managed where remediation is required see as above
- SEASONAL WETLANDS
Meadow Mixture for Seasonally Wet soils Emorgate EM8 sown at 4 g/m²
- NATIVE WOODLAND MIX
See Schedule
- NATIVE SCRUB MIX
See Schedule
- MARGINAL MIX
See Schedule
- GRAVEL
40mm of Stone over Membrane
- ROOT BARRIER
600mm Depth See Plan for Locations
- ARTWORK
To Be Agreed

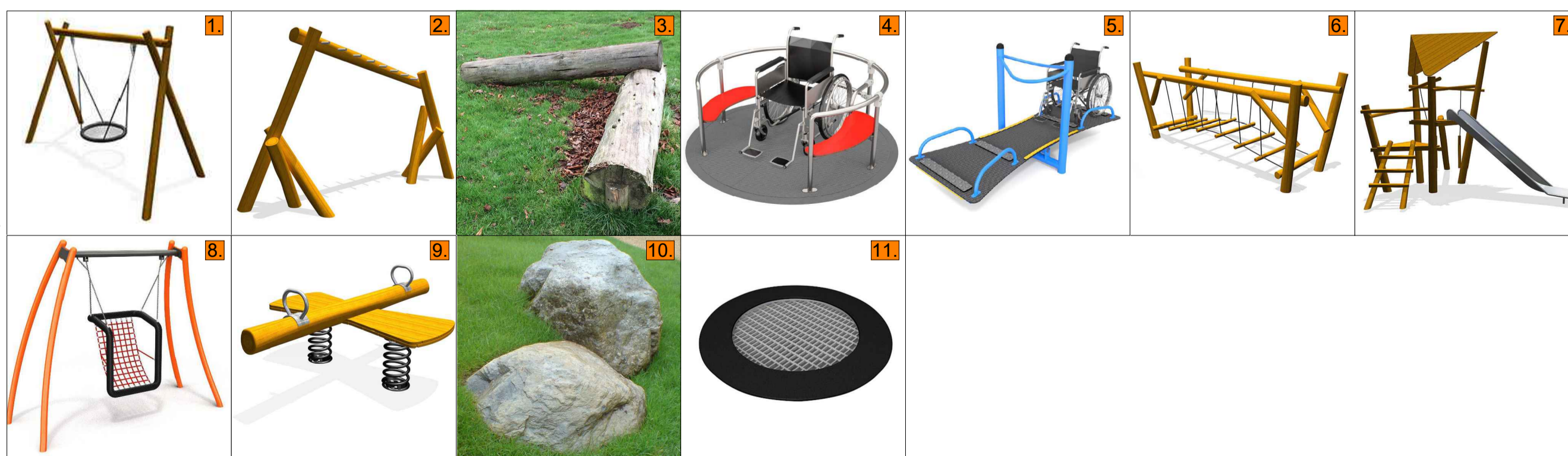


PLOT NUMBER SHEET REF.
SHEET 002 (481-569,573-579)
SHEET 004 (570-572,580-647,726-728)
SHEET 005 (648-725,729-730)



LEGEND - LAP AND LEAP

- 1 BIRDS NEST SWING
As Supplied by Miracle Design & Play Ref: MB00012 Or similar approved
- 2 MONKEY BARS
As Supplied by Miracle Design & Play Ref: MB15031 Or similar approved
- 3 CLIMBING TRUNK x2
As Supplied by Ashwells Timber Ltd 3-4m In Length Or Similar Approved
- 4 WHEEL CHAIR ROUNDABOUT
As Supplied by Miracle Design & Play Ref: SB3110 Or similar approved
- 5 WHEEL CHAIR SEESAW
As Supplied by Miracle Design & Play Ref: SB3108 Or similar approved
- 6 CLATTER BRIDGE
As Supplied by Miracle Design & Play Ref: MB05021 Or similar approved
- 7 MULTI-UNIT
As Supplied by Miracle Design & Play Ref: MB10003 Or similar approved
- 8 INCLUSIVE NEST SWING
As Supplied by Miracle Design & Play Ref: SB2047 Or similar approved
- 9 BUTTERFLY SEESAW
As Supplied by Miracle Design & Play Ref: MB09141 Or similar approved
- 10 FEATURE BOULDERS x3
Calcium Silicate Boulders Mixture of Sizes, Wellrounded Partly Embedded in the Soil
- 11 TRAMPOLINE
As Supplied by Miracle Design & Play Ref: SB3119 Or similar approved
- 12 GRASS MOUND
0.75m Total Height above Ground Level.
- 13 POST AND RAIL FENCE
1.2m High Regional Specification
- 14 SELF-CLOSING GATES
x2 1.2m High Double Pedestrian & Vehicle Gates x1 1.2m High Single Gate As Supplied by Wickstead Playgrounds Ltd Ref: WFGATE12 & WFLVDATE12 Or similar Approved
- BONDED RUBBER MULCH
Complies with BS EN1177 Or similar Approved
- FURNITURE
As Supplied by Brovap Ltd x4 Ashbourne Seat Ref: BX 720 x2 Dony Standard Litter Bin Ref: BX45 2550-S Or similar approved
- SIGNAGE
Ownership/Usage Exact Wording to be Agreed with the Local Planning Authority
- NO DOGS SLAB
One Lead at Each Play Area Gate



LAP & LEAP INSTALLATION NOTES
Play provision should be in accordance with the layout proposed. Individual elements within the layout are to be designed and implemented by a reputable natural play provision company registered and approved by ROSPA, CHAS or equivalent. All component materials and structures are to meet current safety standards and are to be subject to a suitable balanced risk assessment, guided by EN1176 and EN1177, at the design stage and at the pre and post installation stages. The play provider should also produce an ongoing maintenance plan for the play area. The play area is to be inspected and approved by a qualified play inspector prior to being opened for use. Contractors must comply with all Health and Safety regulations and be aware of project/site specific information including referring to the information set out in the CDM drawings.

CDM LEGEND

Symbol	Brief description of risk.
	Caution overhead / underground services.
	Trees have protection order in place, guarding required.

NOTES:
Principal contractor to ensure all health and safety procedures are being correctly followed in relation to all temporary works.

FOR SPECIFICATION, PLANTING DETAILS & SCHEDULE SEE DRAWING WE102-LS-007

Revision	Date
a	15/08/23
b	13/09/23
c	08/11/23
d	26/03/24

Job: **Withycombe Farm, Banbury**
Title: **Site Landscaping**
Scale: **1:250 @A0** Drawn: **LP**
Date: **July 2023** Checked: **PmJ**

THIS DRAWING AND THE BUILDING WORKS SPECIFIED ARE THE COPYRIGHT OF J.S. BLOOR (SERVICES) LIMITED. NO LIABILITY WILL BE ACCEPTED FOR AMENDMENTS MADE BY OTHER PERSONS.

BLOOR HOMES
J S BLOOR (SERVICES) LIMITED
ASHBY ROAD, MEASHAM, SWADLINCOTE, DERBYSHIRE DE12 7JP
TELEPHONE 01530 270100 FACSIMILE 01530 272006
Drawing No. **WE102-LS-006d**

WITHYCOMBE FARM, BANBURY