

Planting Schedule

Trees	Species Name	Grith	Height	Density	Specification	No.
	Crataegus monogyna	40-60	0.5Cr	Double Staggered at 0.4m offset	Transplant BR	177
	Cornus sanguinea	40-60	4m		Branched	28
	Crataegus monogyna	40-60	4m		Branched	42
	Acer campestre	60-80cm	0.5Cr	Double Staggered at 0.4m offset	Transplant BR	87
	Ilex aquifolium	60-80cm	3m		Bushy	120
	Crataegus laevigata	100-150cm	3m		1+2 Multi-Stemmed BR	120
	Acer campestre 'Elsnik'	8-10cm	250-300cm	Counted	Standard Clear Stem 175-200 3 brks 2x RB	3
	Cornus columna	8-10cm	250-300cm	Counted	Standard Clear Stem 175-200 3 brks 2x RB	8
	Carpinus betulus	8-8cm	250-300cm	Counted	Light Standard Clear Stem 150-175 3 brks 2x RB	7
	Alnus glutinosa	8-8cm	250-300cm	Counted	Light Standard Clear Stem 150-175 3 brks 2x RB	7
	Sorbus aria Lutescens	8-10cm	250-300cm	Counted	Standard Clear Stem 175-200 3 brks 2x RB	4
	Lilja cordata Green Spire	8-10cm	250-300cm	Counted	Standard Clear Stem 175-200 3 brks 2x RB	4
	Prunus avium	12-14cm	250-300cm	Counted	Light Standard Clear Stem 150-175 3 brks 2x RB	3
	Quercus ilex	8-10cm	250-300cm	Counted	Standard Clear Stem 175-200 3 brks 2x RB	4
	Sorbus aria Lutescens	10-12cm	300-350cm	Counted	Selected Standard Clear Stem 175-200 4 brks 2x RB	4
	Alnus glutinosa	10-12cm	300-350cm	Counted	Selected Standard Clear Stem min. 200 4 brks 2x RB	2
	Betula pubescens	10-12cm	300-350cm	Counted	Selected Standard Clear Stem 175-200 RB 4 brks 2x RB	2
	Cornus columna	10-12cm	300-350cm	Counted	Selected Standard Clear Stem 175-200 4 brks 2x RB	2
	Quercus ilex	12-14cm	350-425cm	Counted	Heavy Standard Clear Stem 175-200 5 brks 3x RB	1
	Carpinus betulus	12-14cm	350-425cm	Counted	Heavy Standard Clear Stem 175-200 5 brks 3x RB	1
	Lilja cordata Green Spire	12-14cm	350-425cm	Counted	Heavy Standard Clear Stem min. 200 RB	1

Shrubs	Species Name	Height	Pot Size	Specification	Density	No.
	Abelia grandiflora 'Francis Mason'	30-40cm	5-7 SL	Bushy	4/m ²	48
	Abelia x grandiflora 'Kaleidoscope'	30-40cm	SL	Bushy	4/m ²	8
	Aucuba japonica 'Rozannie'	30-40cm	SL	Bushy	4/m ²	81
	Berberis darwinii	40-60cm	SL	Bushy	4/m ²	24
	Camellia williamsii 'Francis Hanger'	40-60cm	SL	Bushy	4/m ²	87
	Carpinus betulus	40-60cm	SL	Bushy	0.5Cr Double Staggered at 0.4m offset	1979
	Ceanothus 'Blue Mound'	60-80cm	5-7 SL	Bushy	4/m ²	60
	Choisya 'Aztec Pearl'	60-80cm	5-7 SL	Bushy	4/m ²	83
	Choisya 'Aztec Pearl'	40-60cm	SL	Bushy	4/m ²	24
	Choisya ternata	40-60cm	SL	Bushy	4/m ²	26
	Cistus 'Grayswood Pink'	30-40cm	SL	Bushy	4/m ²	88
	Cornus alba 'Sibirica'	40-60cm	SL	Bushy	4/m ²	50
	Cornus sanguinea	80-100cm	Branched	BR 3/5 brks 3/m ²		120
	Cornus sanguinea 'Midwinter Fire'	40-60cm	SL	Branched	BR 3/5 brks 3/m ²	120
	Cornus avellana	80-100cm	SL	Branched	BR 3/5 brks 3/m ²	120
	Daphne odora rubra	40-60cm	SL	Bushy	4/m ²	42
	Pachyandra caespitosa 'Goldtau'	40-60cm	SL	Bushy	4/m ²	24
	Elaeagnus ebbingei	40-60cm	SL	Bushy	0.5Cr	482
	Escallonia 'Apple Blossom'	40-60cm	SL	Bushy	4/m ²	44
	Euonymus europaeus	80-100cm	Branched	BR 3/5 brks 3/m ²		120
	Euonymus fortunei 'Emerald Gaiety'	30-40cm	SL	Bushy	4/m ²	43
	Hebe 'Midsummer Beauty'	40-60cm	5-7 SL	Bushy	4/m ²	88
	Ilex aquifolium	40-60cm	BR	0.5Cr Double Staggered at 0.4m offset		132
	Lavandula angustifolia 'Hidcote'	30-40cm	SL	Bushy	4/m ²	43
	Ligustrum ovalifolium	40-60cm	SL	Bushy	0.5Cr Double Staggered at 0.4m offset	553
	Ligustrum vulgare	80-100cm	Branched	BR 3/5 brks 3/m ²		120
	Mahonia aquifolium 'Apollo'	40-60cm	SL	Bushy	4/m ²	49
	Pachyandra terminalis	20-30cm	SL	Bushy	4/m ²	151
	Photinia fraseri 'Red Robin'	40-60cm	SL	Bushy	4/m ²	26
	Pittosporum tenuifolium 'Irene Patterson'	40-60cm	SL	Bushy	4/m ²	89
	Potentilla fruticosa 'Abbotswood'	30-40cm	SL	Bushy	4/m ²	25
	Prunus spinosa	60-80cm	BR	0.5Cr Double Staggered at 0.4m offset		87
	Prunus spinosa	100-150cm	1+1	Branched BR	3/m ²	120
	Rosa canina	60-80cm	BR	0.5Cr Double Staggered at 0.4m offset		221
	Rosa canina	40-60	Branched	BR 4/m ²		42
	Rosa canina	80-100cm	Branched	BR 3/5 brks 3/m ²		120
	Salix caprea	40-60	Branched	4/m ²		87
	Salix cinerea	40-60	Branched	4/m ²		71
	Salvia officinalis 'Purpurascens'	30-40cm	SL	Bushy	4/m ²	107
	Sambucus nigra	60-80cm	BR	0.5Cr Double Staggered at 0.4m offset		177
	Sambucus nigra	80-100cm	Branched	BR 3/5 brks 3/m ²		60
	Skimmia japonica reevesiana	30-40cm	SL	Bushy	4/m ²	78
	Viburnum davidii	40-60cm	SL	Bushy	4/m ²	45
	Viburnum lanata	80-100cm	Branched	BR 3/5 brks 3/m ²		120
	Viburnum opulus	40-60	Branched	4/m ²		46
	Viburnum tinus 'Eve Price'	30-40cm	SL	Bushy	4/m ²	46
	Weigela 'Mont Blanc'	60-40cm	SL	Bushy	4/m ²	47

Climbers

Species Name	Height	Pot Size	Specification	Density	No.	
Lonicera periclymenum	60-80cm	SL	Several Shoots	Caned	Counted	8
Lonicera periclymenum	60-80cm	SL	Several Shoots	3/m ²	60	

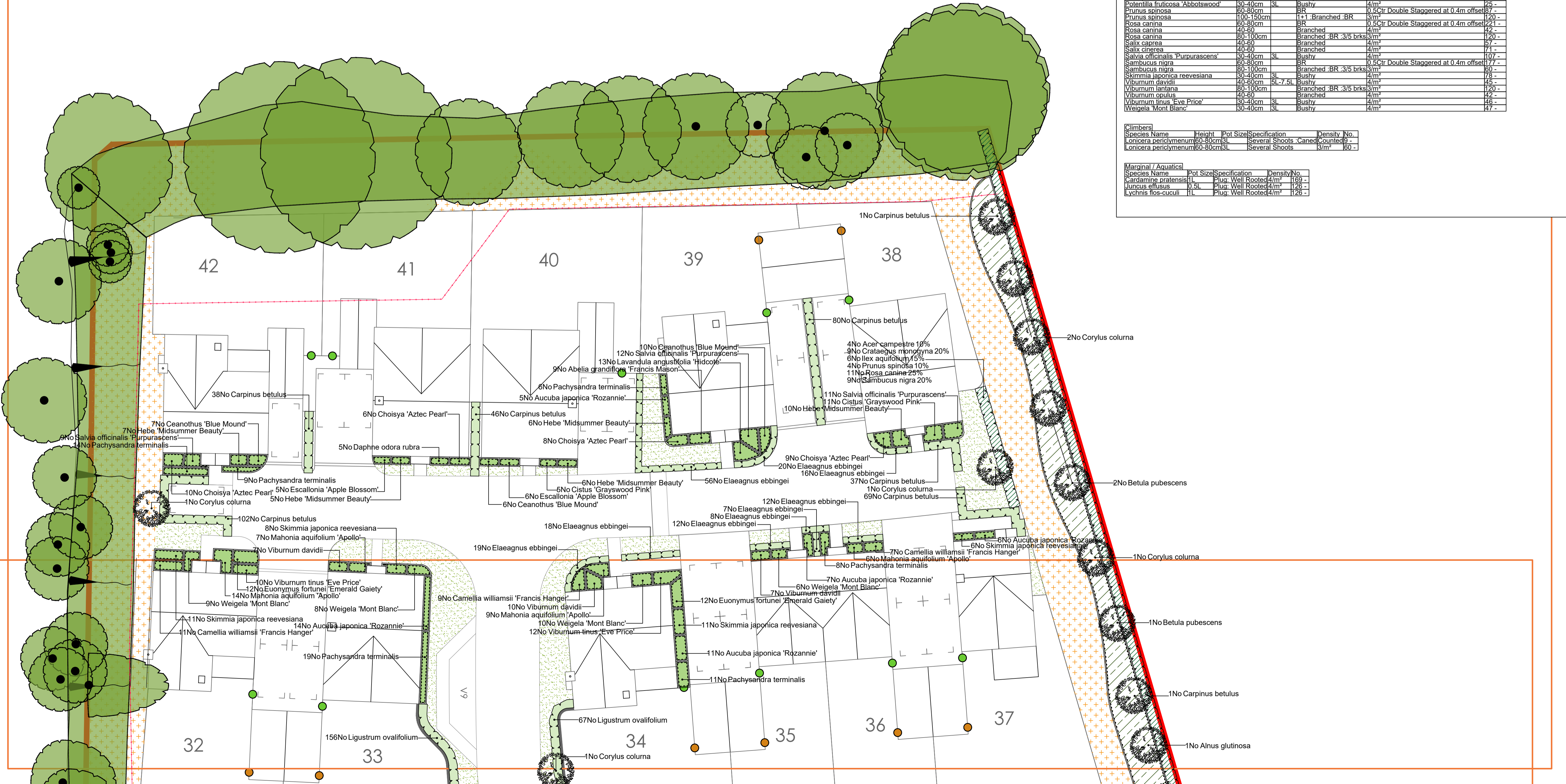
Marginal / Aquatics

Species Name	Pot Size	Specification	Density	No.
Cardamine pratensis	0 SL	Plug Well Rooted	4/m ²	169
Juncus effusus	0 SL	Plug Well Rooted	4/m ²	128
Lycchnis flos-cuculi	1L	Plug Well Rooted	4/m ²	126

SPECIFICATION
All works generally, to comply with the written Soft Landscape Specification.

NOTES:
DO NOT SCALE FROM DRAWING
NOT FOR CONSTRUCTION, FOR PLANNING PURPOSES ONLY

- Legend**
- Existing trees to be retained and protected during construction
 - Proposed tree planting within soft landscape. See detail on sheet
 - Proposed specimen shrub planting to receive short angular staking on half standards with expandable tree ties. Irrigation tubing to root system
 - Proposed climbing plants to be trained up adjacent wall/fence/pergola with galvanised wires and hook set 250mm apart with support canes removed prior to planting
 - Proposed hedge planting to be planted in a double staggered row 300mm apart and at 400mm centres in each row. To be maintained at 1m height
 - Proposed mixed native hedge planting to be planted in a double staggered row 300mm apart and at 400mm centres in each row. To be maintained at 1m height within the site and not cut back adjacent to site boundaries
 - Proposed shrub planting to receive 75mm bark mulch after planting operations
 - Proposed decorative mix shrub planting to be planted in groups of 5-7no. of each species and as above
 - Native shrub dry & wet mix, to be planted in groups of 5-7no. of each species and as above
 - Proposed marginal planting mix
 - Proposed grass areas to receive good quality amenity grass turves laid in line with good horticultural practices
 - Proposed meadow mix, to be seeded with EM3 special general purpose meadow mixture as supplied by Emorsgate Seed and sown at 4 grams per msq, or similar and approved
 - Proposed wet tolerant meadow mixture, to be seeded with EM8 seed mix as supplied by Emorsgate Seeds and sown at 4 grams per msq, or similar and approved
 - Proposed Tussocky grass mixture, to be seeded with EM10 seed mix as supplied by Emorsgate Seeds and sown at 4 grams per msq, or similar and approved
 - Proposed areas of angular chippings for top dressing. Laid over a weed proof membrane
 - Cut lines



Rev	Date	Description	Drawn
A	10.04.24	Layout Change / Drainage amended	JO
		Details	

ACD ENVIRONMENTAL

HEAD OFFICE
Rodbourne Rail Business Centre, Grange Lane,
Malmesbury, SN16 0ES
Tel: 01666 825646

4 & 5 The Old Mill, Fry's Yard, Bridge Street,
Codalming, GU7 1HP
Tel: 01483 425714

Suite 6, Crescent House, Yonge Close,
Eastleigh, SO50 9SX
Tel: 02382 026500

email: mail@acdenv.co.uk
www.acdenvironmental.co.uk

scheme: Land North of Station
Rd. Hook, Horton
client: Deanfield Homes
drawing: Landscape Proposals
date: March 2024
scale: 1:200@A1
drawing no: DEAN24491 - Sheet 1 of 3
drawn: JO checked: HS

Copyright of ACD Environmental Ltd. All rights described in Chapter IV of the Copyright, Designs and Patents Act 1988 have been generally asserted. 2011. Copyright of this plan remains with ACD until all fees have been paid in full.