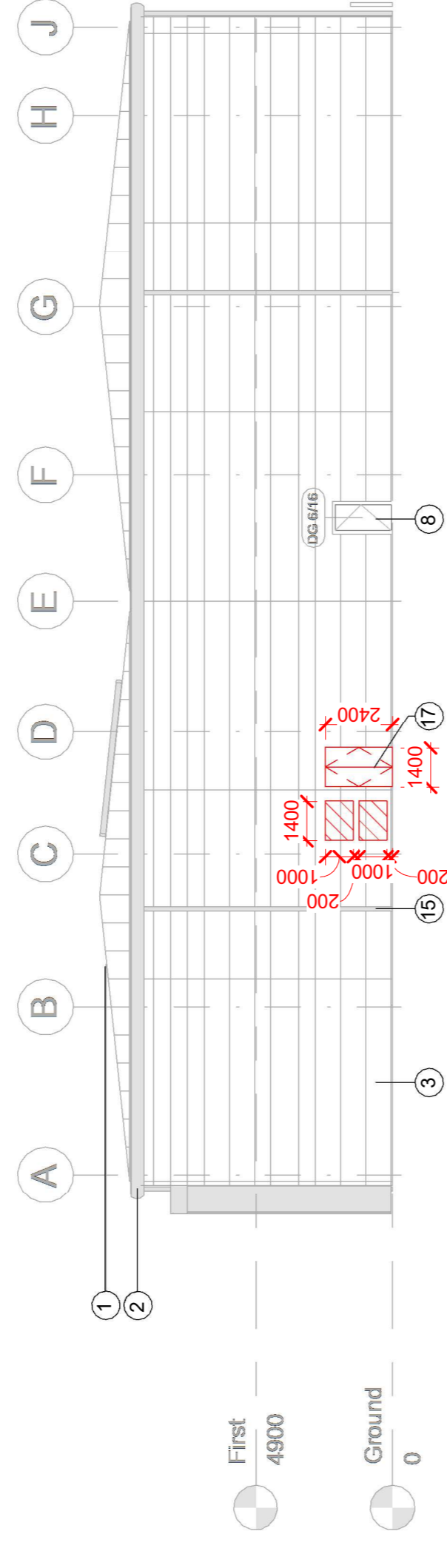


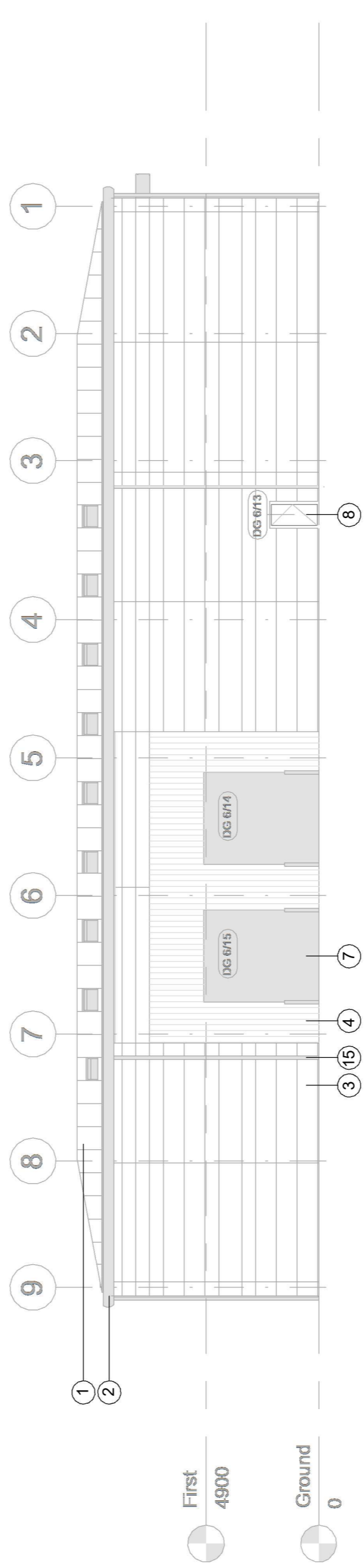
1 Elevation 1 - Main entrance

1 : 200



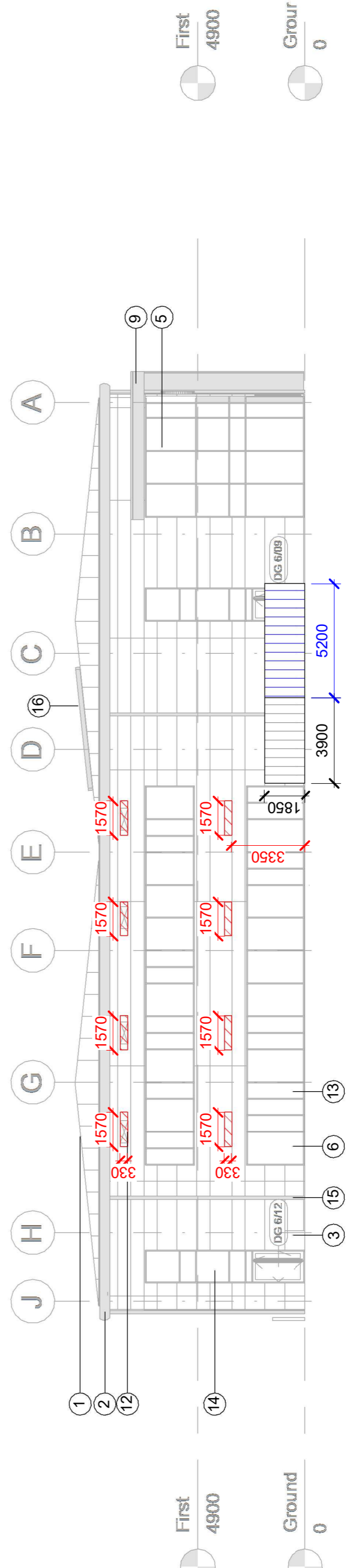
2 Elevation 2 - Service entrance

1 : 200



3 Elevation 3 - BOH

1 : 200



4 Elevation 4

1 : 200

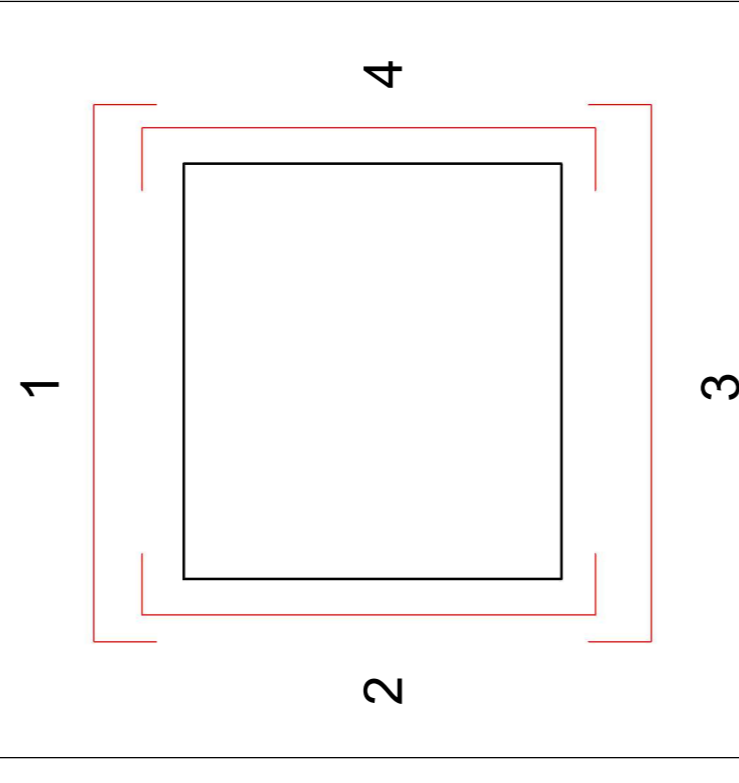
Notes

For Health & Safety related information please refer to the Rolling Designers Risk Register. Where relevant, elements identified on the register are highlighted within the model and on the drawings with the following logo.

- DO NOT SCALE FROM DRAWING.
- All information contained in this drawing (including digital data) should be checked against the latest information available.
- Unless otherwise stated, all grids or coordinates are based on the Ordnance Survey datum.
- Unless otherwise stated, all spot heights and levels are expressed as AOD for 'above Ordnance Datum' based on the Ordnance Survey ODN (Ordnance Datum Newlyn).

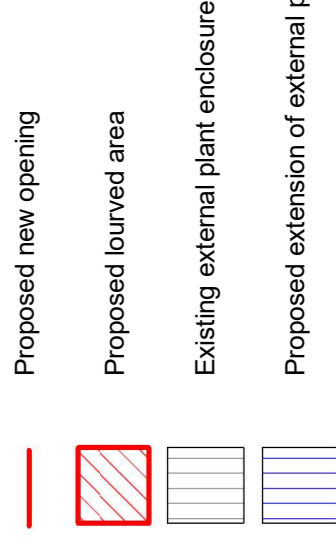
Bennetts Associates Architects make no warranties, express or implied, with respect to the accuracy of the data provided herewith, regardless of its format or the means of its transmission. An existing survey data is based on, or reference from, 3rd Party information. The data is provided 'as is' and 'as available'. No liability is accepted for errors or omissions based on, or reference from, 3rd Party data.

© Crown Copyright 2021. All Rights Reserved.  
Ordnance Survey License 123456



Elevation Key:

- 1 Built-up roof system
- 2 Eaves and verge flashing
- 3 Micro-lined Trimolterm facade profile system
- 4 Vertical trapezoidal built-up cladding system
- 5 PPC Aluminium double glazed curtain walling
- 6 PPC Aluminium double glazed windows
- 7 Loading doors
- 8 Personnel doors
- 9 Feature canopy
- 10 Freestanding etched glass canopy
- 11 Unit number
- 12 Louvers (to M&E consultant specification)
- 13 Decorative coloured glass feature insulated cassettes
- 14 Look-a-like panels (obscured glass)
- 15 Rain water pipes
- 16 Feature glazed rooflight to office
- 17 Metal double doors, colour and finish to match adjacent existing door



# BENNETTS ASSOCIATES

1 Rawstorne Place, London EC1V 7NL  
T +44(0)20 75203300 - www.bennettsassociates.com  
E mail@bennettsassociates.com  
www.bennettsassociates.com/informationanddata/ -  
www.bennettsassociates.com/informationanddata/ -

Project No. 2310  
**Forseven Interim HQ**  
Client  
Forseven

## Existing Building Elevations Alterations

Drawing Title  
Revision Number  
2310-BA-15-E1-DP-A-0200

Scale @ A1  
1 : 200

Revision Date  
21.02.24

Revison/Suitability  
P1 S1

YY MM DD