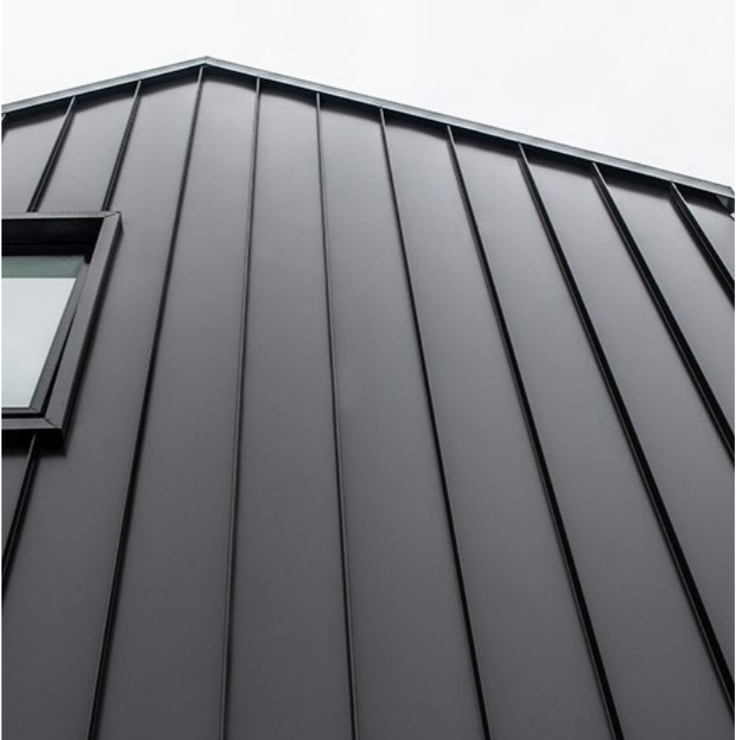


BICESTER MOTION - INNOVATION QUARTER
CLADDING MATERIALITY - STANDING SEAM

3DReid



BICESTER MOTION - INNOVATION QUARTER

ELEVATIONS & MATERIALITY

3DReid



①

Green infrastructure



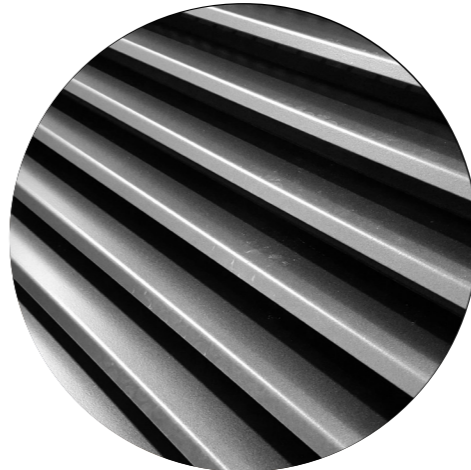
②

Roof



③

Standing seam facade



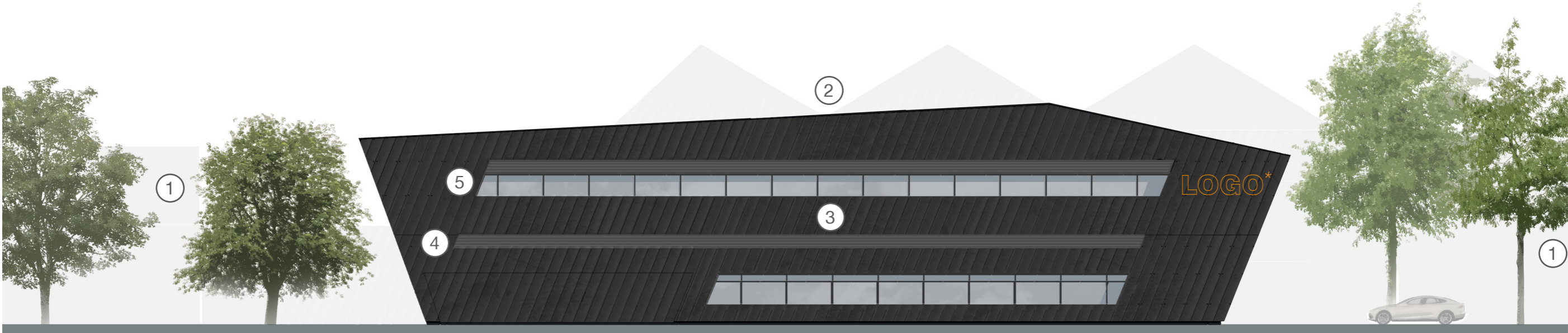
④

Metal louvres



⑤

Ribbon window



SIDE ELEVATION
* Placeholder location for tenant branding

BICESTER MOTION - INNOVATION QUARTER

ELEVATIONS & MATERIALITY

3DReid



⑥

Glazed front facade



⑦

Aluminium panels



⑧

Glazed double doors



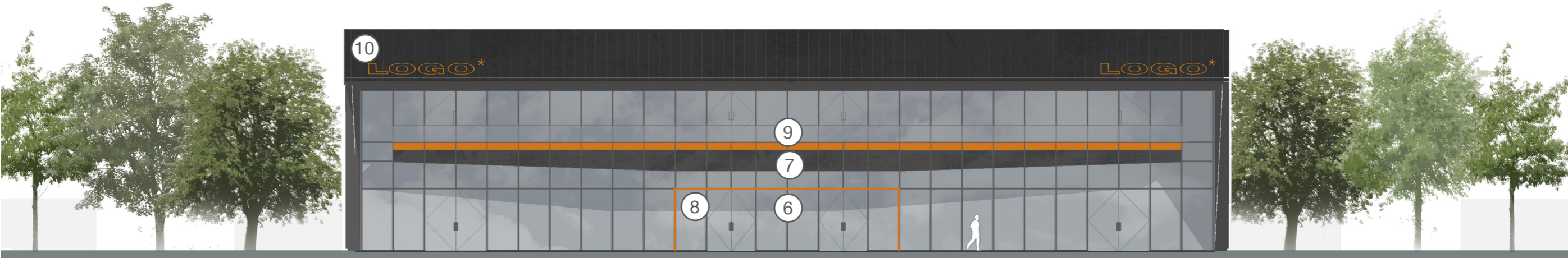
⑨

Capless glass balustrade



⑩

Metal roof

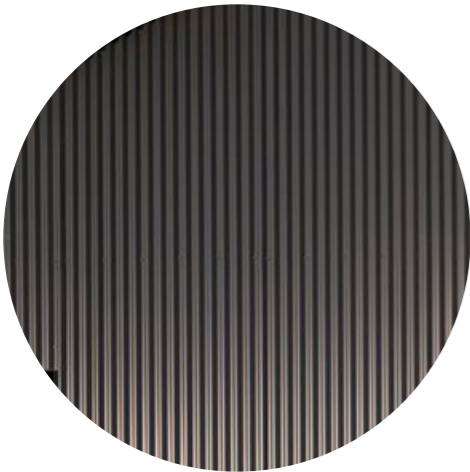


FRONT ELEVATION
* Placeholder location for tenant branding

BICESTER MOTION - INNOVATION QUARTER

ELEVATIONS & MATERIALITY

3DReid



11

Corrugated metal sheet



12

Solar panels



13

Metal roller shutter doors



14

Glazed bi-fold doors



15

Ribbon window



REAR ELEVATION
* Placeholder location for tenant branding

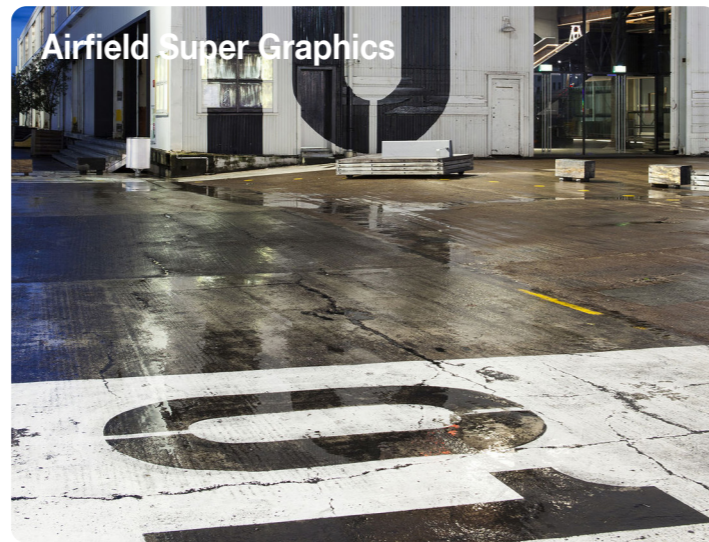
BICESTER MOTION - INNOVATION QUARTER
PROPOSED FRONT FACADE

3DReid





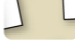















BICESTER MOTION - INNOVATION QUARTER LANDSCAPE CONCEPT - KEY THEMES

Macgregor Smith





KEY

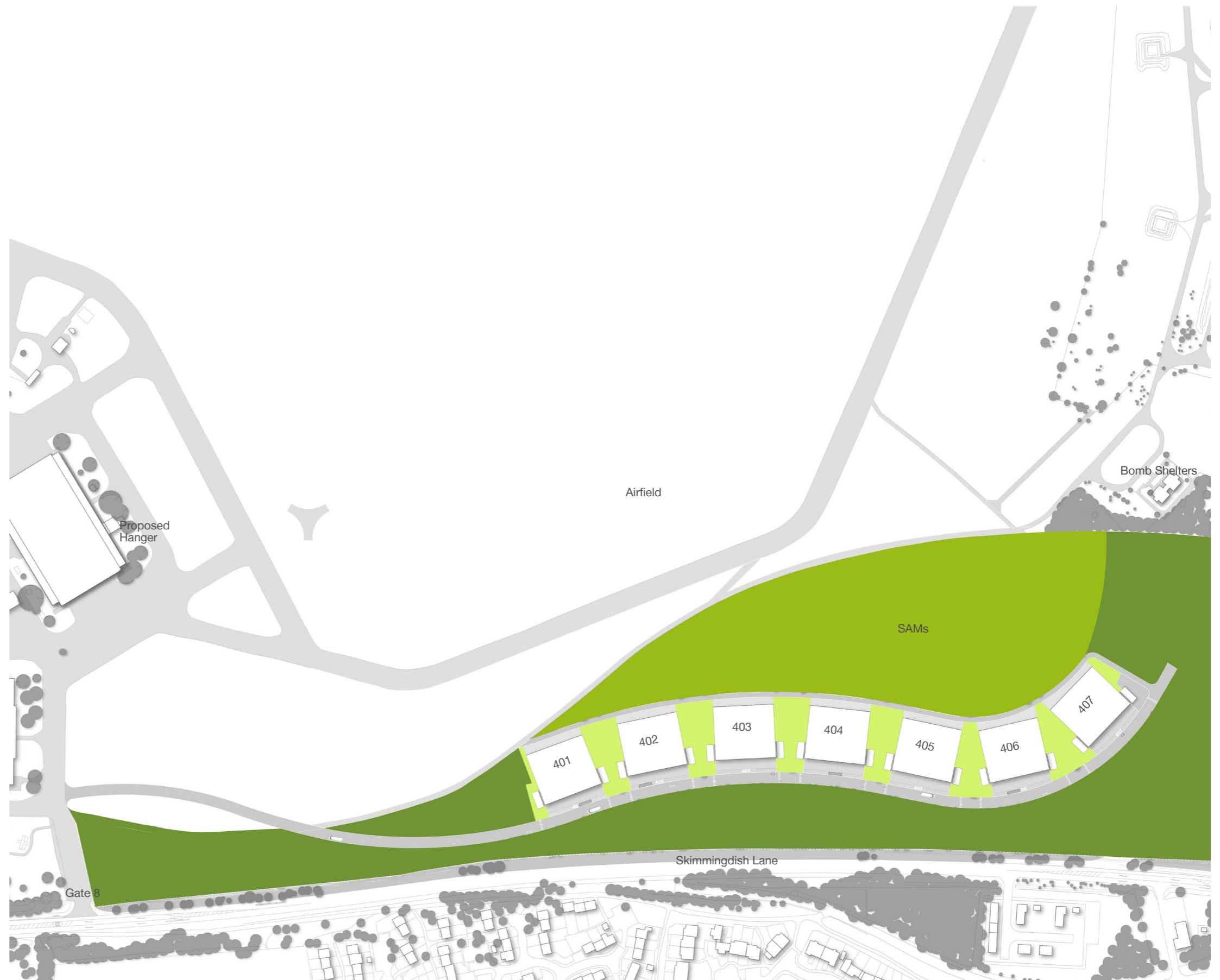
- | | | |
|---|---|--|
|  Planning Application Boundary |  Ecology Enhancement Area
- Open Mosaic Habitat |  Paving to Pedestrian areas |
|  Proposed Trees |  Grass paving to Parking bays |  Resin Bound Aggregate Surface to Yards |
|  Amenity Lawn Turf to Yards |  Tarmac to Roadways |  Substation Enclosures to Car Park |
|  Mown Footpath |  In-situ Concrete Surfaces to Service Yards |  Cycle Stores to Car Park |
|  Wet Woodland Planting |  Crossing Road Markings |  Designated EV Charging Parking Space |
|  Wetland Planting to SUDS Features |  Tree Pits in Paved areas | |
|  Ecology Enhancement Area
- Species-rich Grassland | | |

BICESTER MOTION - INNOVATION QUARTER LANDSCAPE MASTERPLAN - CHARACTER AREAS

Macgregor Smith

The masterplan comprises 3 distinct character areas based on their context and function to provide a richness to the innovation quarter;

- The airfield side embraces the character of the airfield itself with open aspect, long views and grassland planting
- The yard spaces and service areas around the buildings reflect the functionality and industry of the adjacent innovative technologies
- The zone to the skimmingdish boundary draws on the wider natural landscape to integrate parking, access and surface water drainage infrastructure in green and attractive setting



KEY

- Skimmingdish Lane Boundary
- Innovation Buildings / The Yards
- Airfield Heritage Grassland

BICESTER MOTION - INNOVATION QUARTER

CHARACTER AREAS - SKIMMINGDISH LANE BOUNDARY

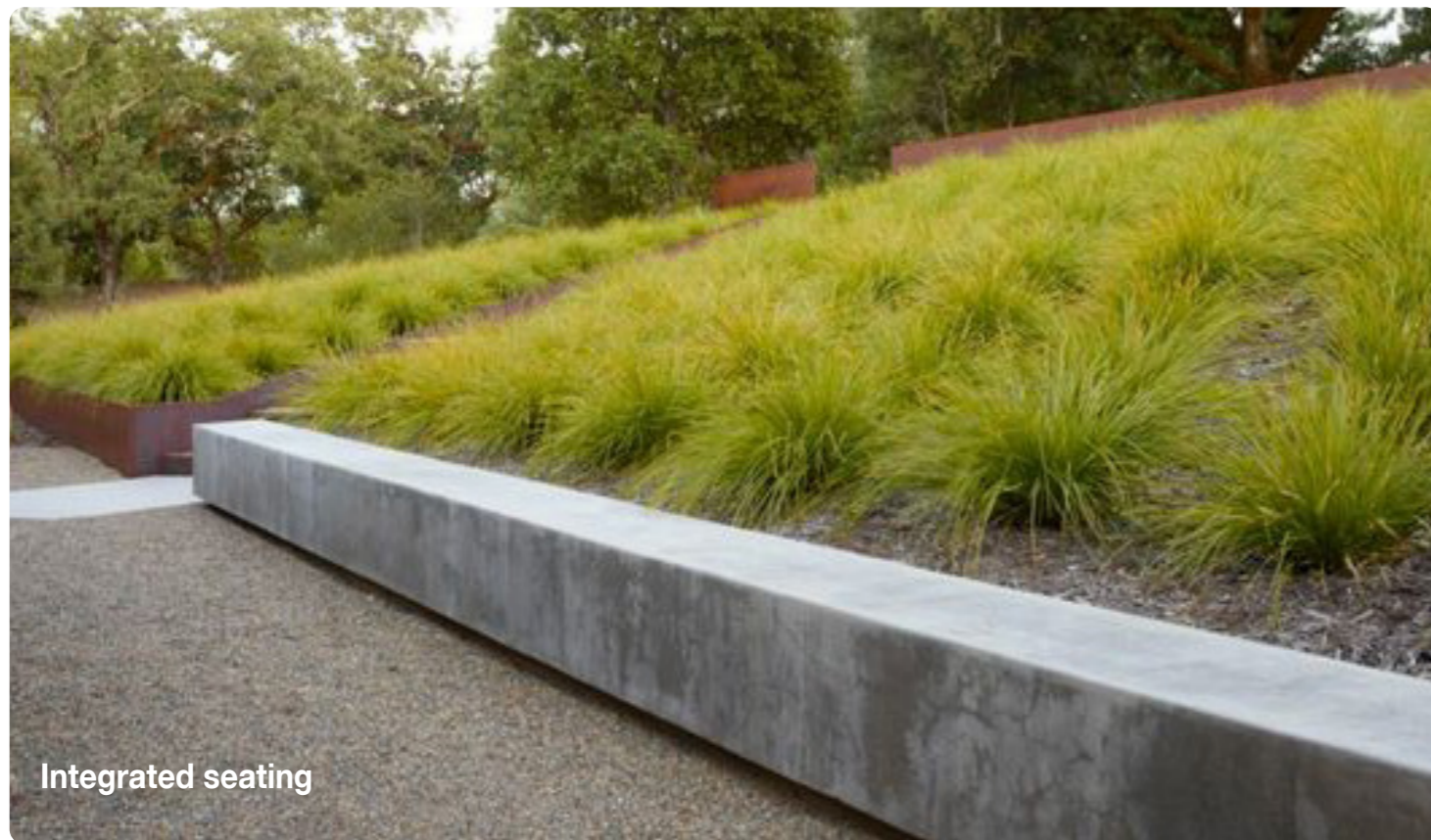
Macgregor Smith



BICESTER MOTION - INNOVATION QUARTER

CHARACTER AREAS - INNOVATION BUILDINGS / THE YARDS

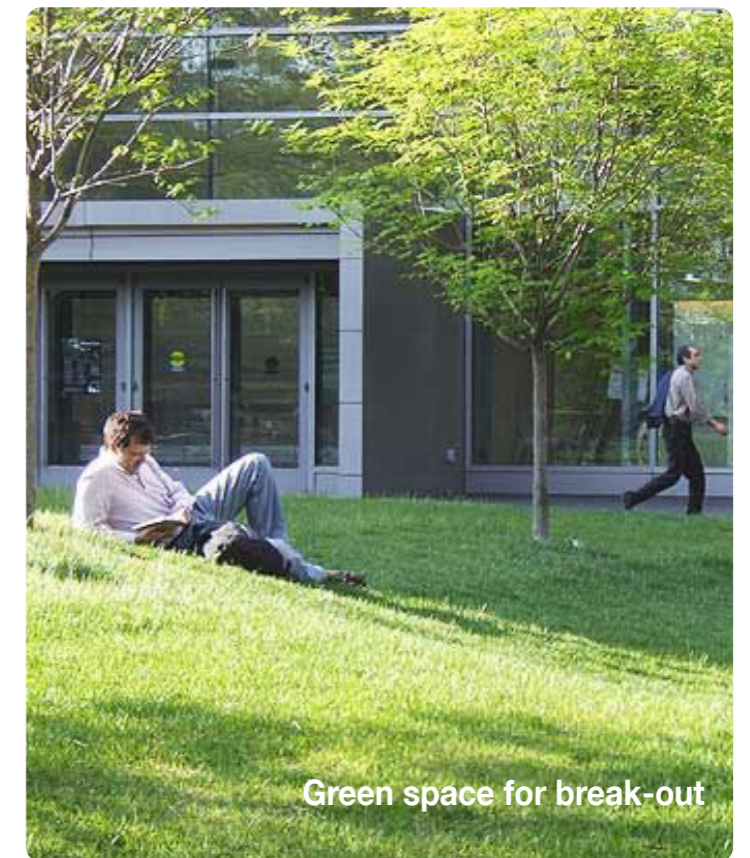
Macgregor Smith



Integrated seating



Flexible space for pop-ups



Green space for break-out



Social spaces for movable furniture



Bold maximal service yards



Areas for automotive exhibition

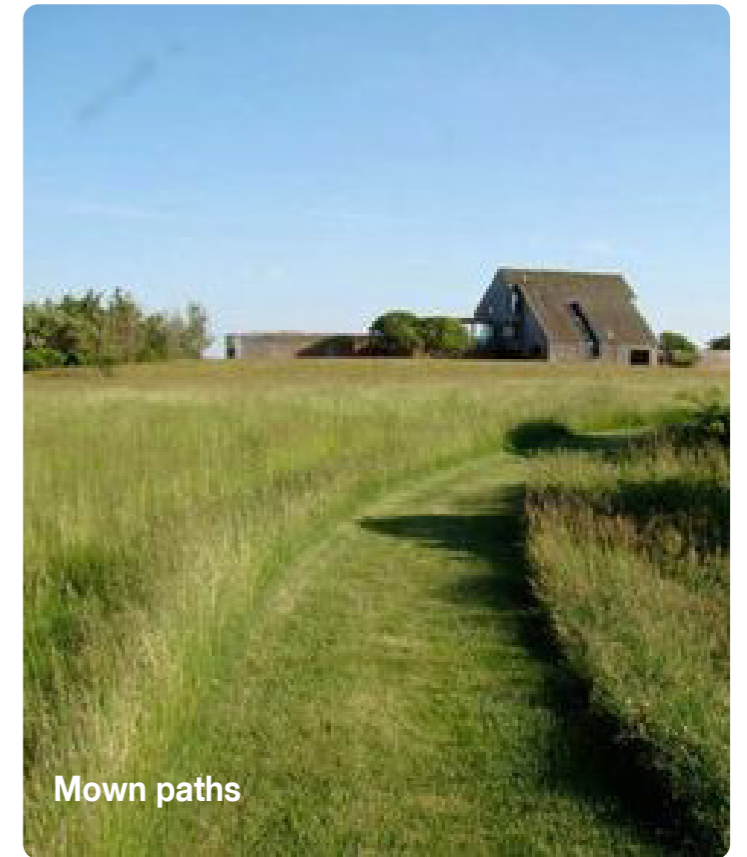
BICESTER MOTION - INNOVATION QUARTER

CHARACTER AREAS - AIRFIELD HERITAGE GRASSLAND

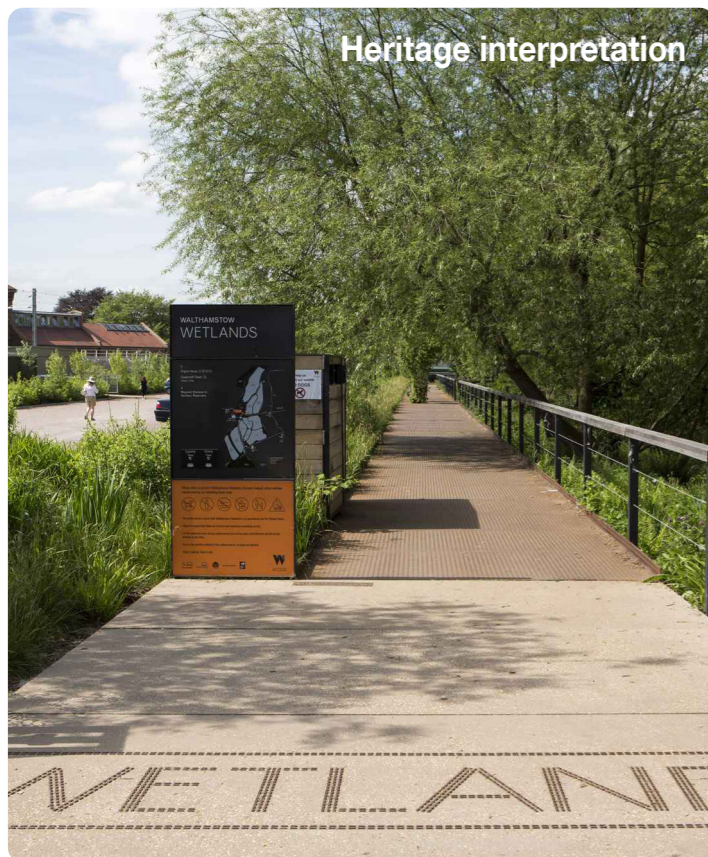
Macgregor Smith



Cycle routes and loops



Mown paths



Heritage interpretation



Enhanced species-rich grassland



Connected and attractive pedestrian routes

BICESTER MOTION - INNOVATION QUARTER

LANDSCAPE DESIGN STRATEGIES - TREE PLANTING

Macgregor Smith

The proposed tree species will be selected in response to the specific site conditions and to suit the function and character of their location within the masterplan.

To the Skimmingdish Lane boundary native woodland species will provide a naturalistic to Skimmingdish Lane. Wet woodland species will feature within swales and SuDS attenuation features.

Within the amenity spaces street trees will reference the character of the Bicester Heritage area and reflect the scale of the proposed buildings



KEY

- Street trees to amenity space
- Trees in linear swales
- Trees in attenuation basins
- Trees to the woodland edge

BICESTER MOTION - INNOVATION QUARTER

LANDSCAPE DESIGN STRATEGIES - TREE PLANTING

Macgregor Smith

