
VOLUME 2
FIGURES 7.47 - 7.64
LVIA FIGURES - WINTER VIEWS

DECEMBER 2023

ISSUE SHEET

JOB NAME: OXFORD UNITED FC NEW STADIUM
JOB NUMBER: D3263
CLIENT: OXFORD UNITED FC

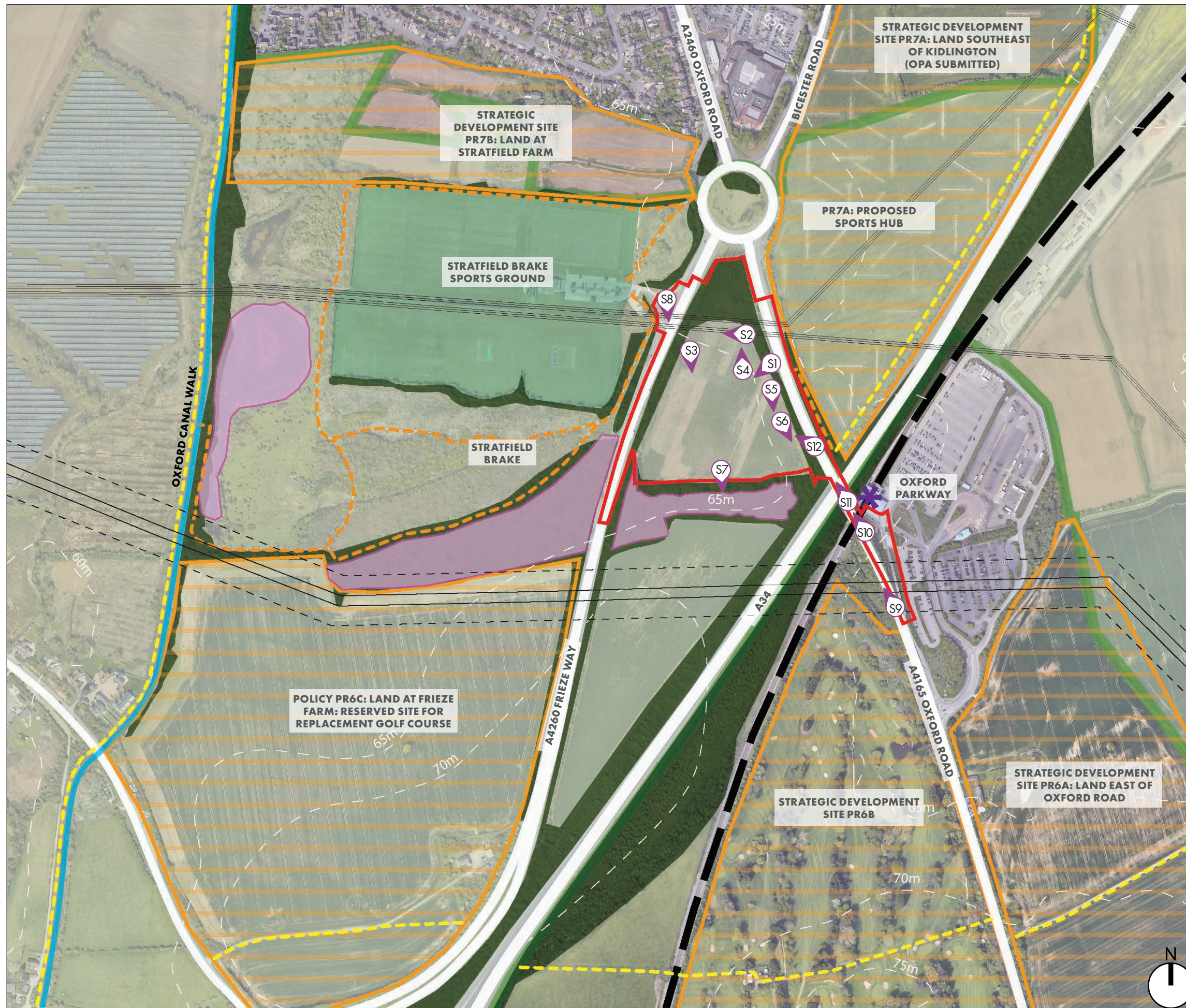
REVISION	DATE	REVISION DETAILS	PREPARED BY	CHECKED BY	APPROVED BY
1	25.08.2023	DRAFT FOR INTERNAL REVIEW	CK	SR	AS
2	04.10.2023	DRAFT FOR CLIENT REVIEW	CK	SR	AS
3	08.12.2023	ISSUE	CK	SR	AS

CONTENTS: VOLUME 2: LVIA FIGURES - WINTER VIEWS

VOLUME 2
fabrik LVIA Figures 7.47 - 7.64

4

PROJECT NUMBER: D3263
VERSION: 3
VERSION DATE: DECEMBER 2023
COMMENT: ISSUE



REPRODUCED FROM ORDNANCE SURVEY DIGITAL MAP DATA © CROWN COPYRIGHT 2023. ALL RIGHTS RESERVED. LICENCE NUMBER 100022432

LEGEND

- SITE BOUNDARY
- EXISTING STRATFIELD BRAKE SPORTS GROUND
- EXISTING GREEN BELT
- EXISTING VEGETATION
- STRATFIELD BRAKE NERC ACT S41 HABITAT
- STRATEGIC SITE ALLOCATIONS
- ✳ RAILWAY STATION
- RAILWAY LINE
- PROW- FOOTPATH
- PERMISSIVE FOOTPATH
- OXFORD CANAL
- ROADS
- 65m CONTOURS
- 230KV OVERHEAD TRANSMISSION LINES
- 420KV OVERHEAD TRANSMISSION LINES + EASEMENT
- PROPOSED PR7A ALLOCATION PLAN
- EXISTING OAK TREES
- S1 REPRESENTATIVE VIEWPOINT LOCATION

FIGURE 7.47 SITE FEATURES PLAN (FABRIK, 2023)





PHOTOGRAPH S1 - VIEW OF THE CENTRAL PART OF THE SITE FROM THE EXISTING FIELD ENTRANCE ON THE EASTERN BOUNDARY, LOOKING WEST. THERE ARE GLIMPSED VIEWS OF THE SOUTHERN AND WESTERN SITE BOUNDARY VEGETATION ABOVE THE WILLOW PLANTATION.



PHOTOGRAPH S2 - VIEW FROM THE NORTH EASTERN PART OF THE SITE, LOOKING WEST ALONG THE LINE OF THE OVERHEAD CABLES.



PHOTOGRAPH S3 - VIEW LOOKING SOUTH ALONG THE WESTERN BOUNDARY OF THE SITE. THE BOUNDARY VEGETATION SCREENS VIEWS OF FRIEZE WAY.



PHOTOGRAPH S4 - VIEW FROM THE CENTRAL PART OF THE SITE, LOOKING NORTH TOWARDS KIDLINGTON. THE OVERHEAD CABLES AND POPLARS ON THE NORTHERN BOUNDARY ARE VISIBLE.



PHOTOGRAPH S5 - VIEW FROM THE CENTRAL, WESTERN PART OF THE SITE, LOOKING SOUTH. THE WESTERN AND SOUTHERN BOUNDARY VEGETATION ENCLOSE THE SITE. FIGURE 7.48 SITE PHOTOGRAPHS S1-S7: WINTER (FABRIK, 2023)



PHOTOGRAPH S6: VIEW FROM THE SOUTH WESTERN PART OF THE SITE, LOOKING SOUTH. THE WESTERN AND SOUTHERN BOUNDARY VEGETATION ENCLOSE THE SITE.



PHOTOGRAPH S7: VIEW FROM THE CENTRAL SOUTHERN PART OF THE SITE, LOOKING SOUTH INTO THE WOODLAND BLOCK ALONG THE SOUTHERN EDGE OF THE SITE.



PHOTOGRAPH S8
VIEW FROM THE ENTRANCE TO STRATFIELD BRAKE SPORTS GROUND ADJACENT TO FRIEZE WAY ON THE WESTERN BOUNDARY OF THE SITE, LOOKING EAST ACROSS THE SITE. THERE ARE OPEN VIEWS OF THE SECTION OF FRIEZE WAY WITHIN THE SITE. THE VEGETATION ALONG THE FIELD BOUNDARY FORESHORTENS VIEWS OF THE INTERNAL ARRANGEMENTS OF THE FIELD WITHIN THE SITE. THE OVERHEAD POWER LINES WITHIN THE SITE ARE VISIBLE OPPOSITE THE SPORTS GROUND ENTRANCE.



PHOTOGRAPH S9
VIEW FROM OXFORD ROAD WITHIN THE SITE, LOOKING NORTH ACROSS THE SITE. THERE ARE PARTIAL VIEWS OF TOPS OF THE SOUTHERN AND EASTERN FIELD BOUNDARY VEGETATION WITH TWO OF THE POPLARS ON THE NORTHERN SITE BOUNDARY ALSO PARTIALLY VISIBLE. VIEWS OF THE INTERNAL ARRANGEMENTS OF THE SITE ARE LIMITED TO THE EXISTING ROAD CORRIDOR DUE TO THE EXISTING ROADSIDE VEGETATION. THE CHARACTER OF THE VIEW IS OF A ROAD CORRIDOR CROSSING A BRIDGE WITH ASSOCIATED VEGETATION.



PHOTOGRAPH S10
VIEW FROM OXFORD ROAD AS IT CROSSES THE BRIDGE OVER THE RAILWAY LINE WITHIN THE SITE, LOOKING NORTH TOWARDS THE CENTRAL FIELD WITHIN THE SITE. THERE ARE PARTIAL VIEWS OF TOPS OF THE SOUTHERN SITE BOUNDARY VEGETATION WITH TWO OF THE POPLARS ON THE NORTHERN SITE BOUNDARY ALSO PARTIALLY VISIBLE. VIEWS OF THE INTERNAL ARRANGEMENTS OF THE FIELD ARE TRUNCATED BY THE INTERVENING TOPOGRAPHY AND VEGETATION. THE CHARACTER OF THE VIEW IS OF A ROAD CORRIDOR CROSSING A BRIDGE WITH ASSOCIATED VEGETATION.

FIGURE 7.49 SITE PHOTOGRAPHS S8-S10: WINTER (FABRIK, 2023)



PHOTOGRAPH S11

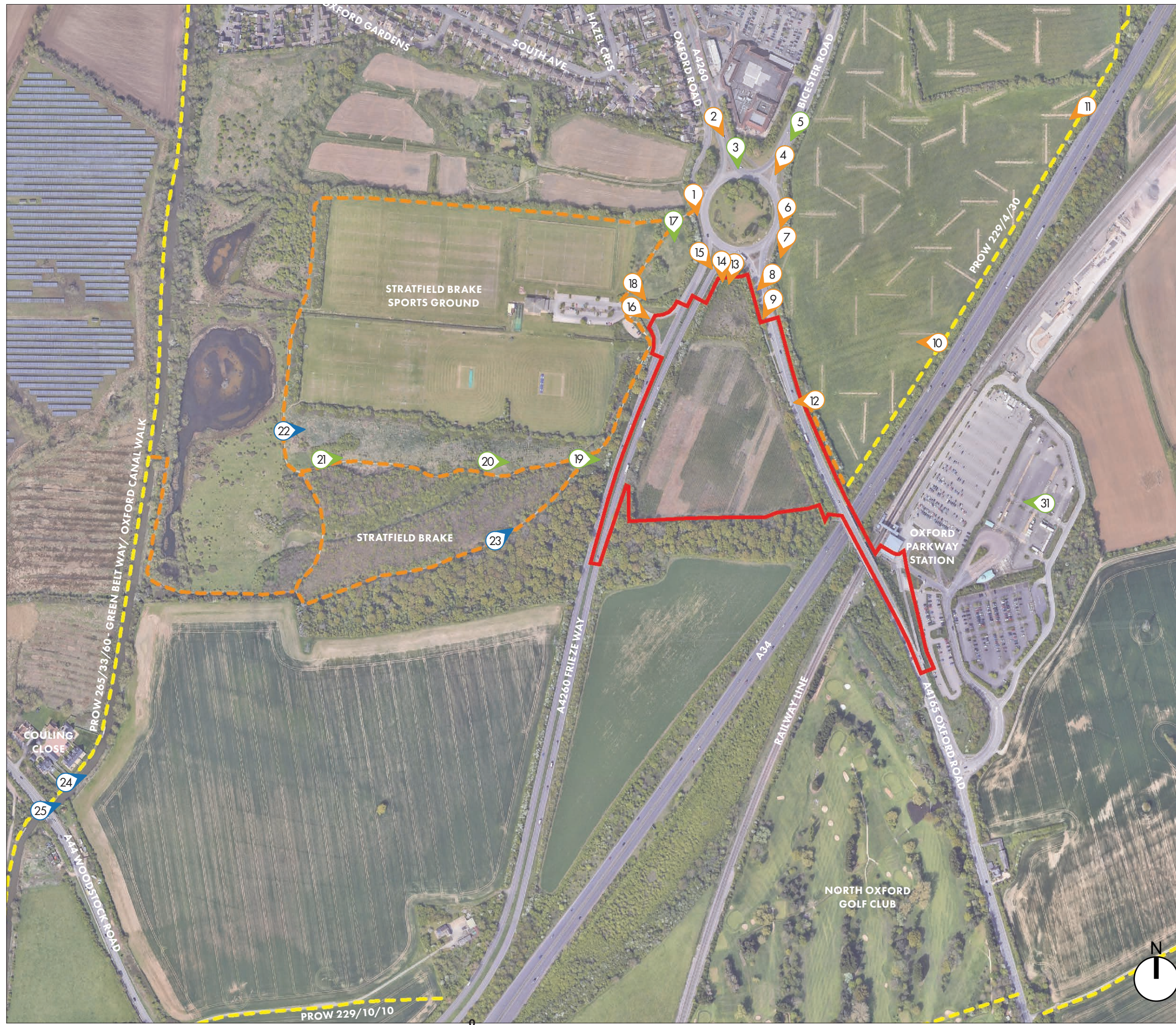
VIEW FROM OXFORD ROAD AS IT CROSSES THE BRIDGE OVER THE A34 WITHIN THE SITE, LOOKING NORTH TOWARDS THE FIELD WITHIN THE SITE. THERE ARE OPEN VIEWS OF THE EASTERN SITE BOUNDARY VEGETATION AND THE TOPS OF THE TREES WITHIN THE WOODLAND TO THE SOUTH OF THE SITE. VIEWS OF THE INTERNAL ARRANGEMENTS OF THE FIELD ARE TRUNCATED BY THE INTERVENING TOPOGRAPHY AND VEGETATION. THE CHARACTER OF THE VIEW IS OF A ROAD CORRIDOR CROSSING A BRIDGE WITH ASSOCIATED VEGETATION.



PHOTOGRAPH S12

VIEW FROM OXFORD ROAD WITHIN THE SITE, LOOKING NORTH ALONG THE EASTERN BOUNDARY TOWARDS KIDLINGTON ROUNDABOUT. THERE ARE OPEN VIEWS OF THE EASTERN PART OF THE SITE THAT ENCOMPASSES OXFORD ROAD. THE FIELD BOUNDARY VEGETATION TRUNCATES VIEWS OF THE INTERNAL ARRANGEMENTS OF THE FIELD WITHIN THE SITE. THE CHARACTER OF THE VIEW IS OF A ROAD CORRIDOR WITH ASSOCIATED VEGETATION.

FIGURE 7.50 SITE PHOTOGRAPHS S11-S12: WINTER (FABRIK, 2023)



LEGEND

- APPLICATION SITE BOUNDARY
- PROW- FOOTPATH
- PERMISSIVE FOOTPATH
- 21 LOCATION OF PHOTOGRAPHIC VIEWPOINT - OPEN VIEW (AN OPEN VIEW OF THE WHOLE OF THE SITE OR OPEN VIEW OF PART OF THE SITE).
- 21 LOCATION OF PHOTOGRAPHIC VIEWPOINT - PARTIAL VIEW (A VIEW OF THE SITE WHICH FORMS A SMALL PART OF THE WIDER PANORAMA, OR WHERE VIEWS ARE FILTERED BETWEEN INTERVENING BUILT FORM OR VEGETATION).
- 21 LOCATION OF PHOTOGRAPHIC VIEWPOINT - TRUNCATED VIEW (VIEWS OF THE SITE ARE OBSCURED BY THE INTERVENING BUILT FORM AND / OR VEGETATION, OR IS DIFFICULT TO PERCEIVE).

FIGURE 7.51 LOCAL VIEWPOINTS LOCATION PLAN (FABRIK, 2023)

1KM



PHOTOGRAPH – VIEWPOINT 1 VALUE: LOW
 VIEW FROM OXFORD ROAD AT THE JUNCTION WITH KIDLINGTON ROUNDABOUT TO THE NORTH OF THE SITE, LOOKING SOUTH TOWARDS THE SITE. THE LINE OF FIVE POPLARS ON THE NORTHERN SITE BOUNDARY ARE VISIBLE BEYOND THE ROUNDABOUT. THE CHARACTER OF THE VIEW IS OF A TRANSPORT CORRIDOR WITH TREE PLANTING.



PHOTOGRAPH – VIEWPOINT 2 VALUE ROAD USERS: LOW / RESIDENTS: HIGH
 VIEW FROM THE A4260 ON APPROACH TO KIDLINGTON ROUNDABOUT TO THE NORTH OF THE SITE, LOOKING SOUTH TOWARDS THE SITE. THERE ARE OPEN VIEWS OF PART OF THE NORTHERN SITE BOUNDARY VEGETATION, INCLUDING THE LINE OF FIVE POPLARS ON THE NORTHERN SITE BOUNDARY, WHICH ARE PARTIALLY VISIBLE BEYOND THE ROUNDABOUT VEGETATION. THE CHARACTER OF THE VIEW IS OF A TRANSPORT CORRIDOR WITH TREE PLANTING.

LEGEND

- SITE BOUNDARY
- ① LOCATION OF PHOTOGRAPHIC VIEWPOINT – OPEN VIEW (AN OPEN VIEW OF THE WHOLE OF THE SITE OR OPEN VIEW OF PART OF THE SITE).
- ② LOCATION OF PHOTOGRAPHIC VIEWPOINT – PARTIAL VIEW (A VIEW OF THE SITE WHICH FORMS A SMALL PART OF THE WIDER PANORAMA, OR WHERE VIEWS ARE FILTERED BETWEEN INTERVENING BUILT FORM OR VEGETATION).
- ③ LOCATION OF PHOTOGRAPHIC VIEWPOINT – TRUNCATED VIEW (VIEWS OF THE SITE ARE OBSCURED BY THE INTERVENING BUILT FORM AND / OR VEGETATION, OR IS DIFFICULT TO PERCEIVE).



FIGURE 7.52 LOCAL VIEWPOINTS 1-2 WINTER (FABRIK, 2023)



PHOTOGRAPH – VIEWPOINT 3 **VALUE: LOW**
 VIEW FROM KIDLINGTON ROUNDABOUT AT THE JUNCTION WITH THE A4260, LOOKING SOUTH TOWARDS THE SITE. THE SITE IS PARTIALLY VISIBLE BEYOND THE ROUNDABOUT VEGETATION. THE CHARACTER OF THE VIEW IS OF A ROAD CORRIDOR WITH ASSOCIATED VEGETATION.



PHOTOGRAPH – VIEWPOINT 4 **VALUE: LOW**
 VIEW FROM BICESTER ROAD ON APPROACH TO KIDLINGTON ROUNDABOUT, LOOKING SOUTH WEST TOWARDS THE SITE. THE SITE IS PARTIALLY VISIBLE BEYOND THE ROUNDABOUT VEGETATION WITH THE POPLARS ON THE NORTHERN BOUNDARY PROMINENT. THE CHARACTER OF THE VIEW IS OF A ROAD CORRIDOR WITH ASSOCIATED VEGETATION.

LEGEND

- **SITE BOUNDARY**
- ① **LOCATION OF PHOTOGRAPHIC VIEWPOINT – OPEN VIEW (AN OPEN VIEW OF THE WHOLE OF THE SITE OR OPEN VIEW OF PART OF THE SITE).**
- ② **LOCATION OF PHOTOGRAPHIC VIEWPOINT – PARTIAL VIEW (A VIEW OF THE SITE WHICH FORMS A SMALL PART OF THE WIDER PANORAMA, OR WHERE VIEWS ARE FILTERED BETWEEN INTERVENING BUILT FORM OR VEGETATION).**
- ③ **LOCATION OF PHOTOGRAPHIC VIEWPOINT – TRUNCATED VIEW (VIEWS OF THE SITE ARE OBSCURED BY THE INTERVENING BUILT FORM AND / OR VEGETATION, OR IS DIFFICULT TO PERCEIVE).**



KEY PLAN

FIGURE 7.53 LOCAL VIEWPOINTS 3-4 WINTER (FABRIK, 2023)



PHOTOGRAPH – VIEWPOINT 5 **VALUE: LOW**
 VIEW FROM BICESTER ROAD, LOOKING SOUTH WEST TOWARDS THE SITE. THE SITE IS PARTIALLY VISIBLE BEYOND THE ROUNDABOUT VEGETATION WITH THE POPLARS ON THE NORTHERN BOUNDARY PROMINENT. THE CHARACTER OF THE VIEW IS OF A ROAD CORRIDOR WITH ASSOCIATED VEGETATION.



PHOTOGRAPH – VIEWPOINT 6 **VALUE: LOW**
 VIEW FROM KIDLINGTON ROUNDABOUT, LOOKING SOUTH TOWARDS THE SITE. THERE ARE OPEN VIEWS OF THE NORTHERN SITE BOUNDARY VEGETATION WITH THE POPLARS ON THE NORTHERN BOUNDARY PROMINENT. THE CHARACTER OF THE VIEW IS OF A ROAD CORRIDOR WITH ASSOCIATED VEGETATION.

LEGEND

- **SITE BOUNDARY**
- ① **LOCATION OF PHOTOGRAPHIC VIEWPOINT – OPEN VIEW (AN OPEN VIEW OF THE WHOLE OF THE SITE OR OPEN VIEW OF PART OF THE SITE).**
- ② **LOCATION OF PHOTOGRAPHIC VIEWPOINT – PARTIAL VIEW (A VIEW OF THE SITE WHICH FORMS A SMALL PART OF THE WIDER PANORAMA, OR WHERE VIEWS ARE FILTERED BETWEEN INTERVENING BUILT FORM OR VEGETATION).**
- ③ **LOCATION OF PHOTOGRAPHIC VIEWPOINT – TRUNCATED VIEW (VIEWS OF THE SITE ARE OBSCURED BY THE INTERVENING BUILT FORM AND / OR VEGETATION, OR IS DIFFICULT TO PERCEIVE).**



KEY PLAN

FIGURE 7.54 LOCAL VIEWPOINTS 5-6 WINTER (FABRIK, 2023)



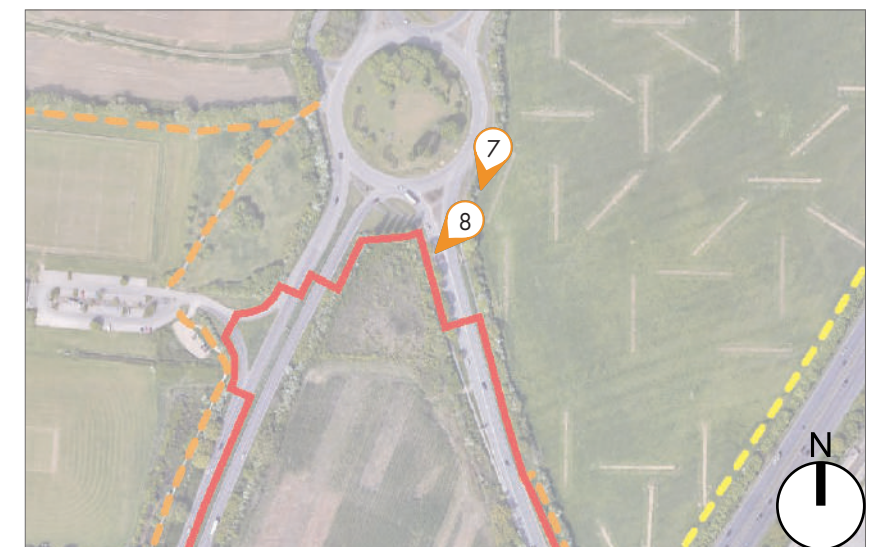
PHOTOGRAPH – VIEWPOINT 7 **VALUE: LOW**
 VIEW FROM KIDLINGTON ROUNDABOUT, LOOKING SOUTH TOWARDS THE SITE. THERE ARE OPEN VIEWS OF THE NORTHERN SITE BOUNDARY VEGETATION WITH THE POPLARS ON THE NORTHERN BOUNDARY PROMINENT. THE CHARACTER OF THE VIEW IS OF A ROAD CORRIDOR WITH ASSOCIATED VEGETATION.



PHOTOGRAPH – VIEWPOINT 8 **VALUE: LOW**
 VIEW FROM THE OXFORD ROAD/KIDLINGTON ROUNDABOUT JUNCTION ADJACENT TO THE NORTHERN BOUNDARY OF THE SITE, LOOKING SOUTH WEST TOWARDS THE SITE. THERE ARE OPEN VIEWS OF THE NORTHERN AND EASTERN SITE BOUNDARY VEGETATION WITH THE TOPS OF THE TREES WITHIN THE WOODLAND IN THE SOUTH OF THE SITE VISIBLE BEYOND. VIEWS OF THE INTERNAL ARRANGEMENTS OF THE SITE ARE TRUNCATED BY THE BOUNDARY VEGETATION. THE CHARACTER OF THE VIEW IS OF A ROAD CORRIDOR WITH ASSOCIATED VEGETATION.

LEGEND

- **SITE BOUNDARY**
- ① **LOCATION OF PHOTOGRAPHIC VIEWPOINT – OPEN VIEW (AN OPEN VIEW OF THE WHOLE OF THE SITE OR OPEN VIEW OF PART OF THE SITE).**
- ② **LOCATION OF PHOTOGRAPHIC VIEWPOINT – PARTIAL VIEW (A VIEW OF THE SITE WHICH FORMS A SMALL PART OF THE WIDER PANORAMA, OR WHERE VIEWS ARE FILTERED BETWEEN INTERVENING BUILT FORM OR VEGETATION).**
- ③ **LOCATION OF PHOTOGRAPHIC VIEWPOINT – TRUNCATED VIEW (VIEWS OF THE SITE ARE OBSCURED BY THE INTERVENING BUILT FORM AND / OR VEGETATION, OR IS DIFFICULT TO PERCEIVE).**

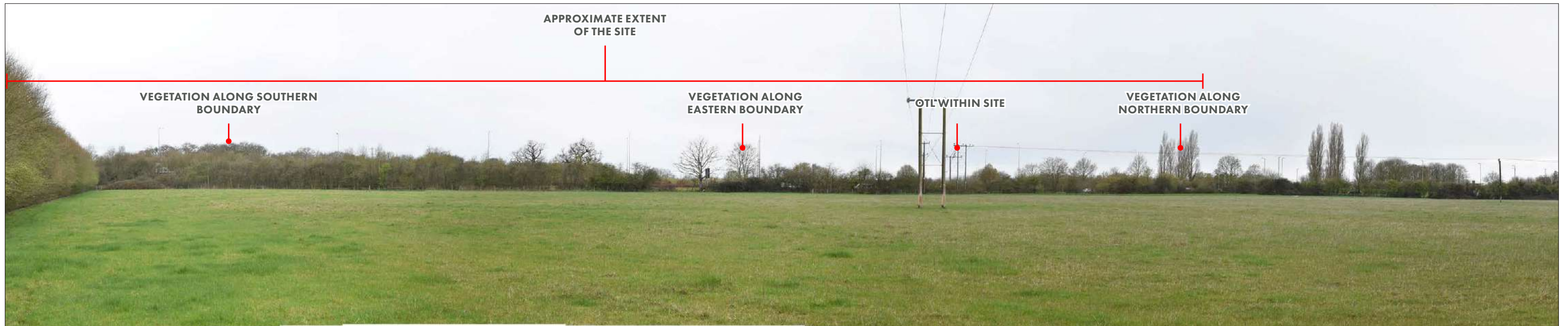


KEY PLAN

FIGURE 7.55 LOCAL VIEWPOINTS 7-8 WINTER (FABRIK, 2023)



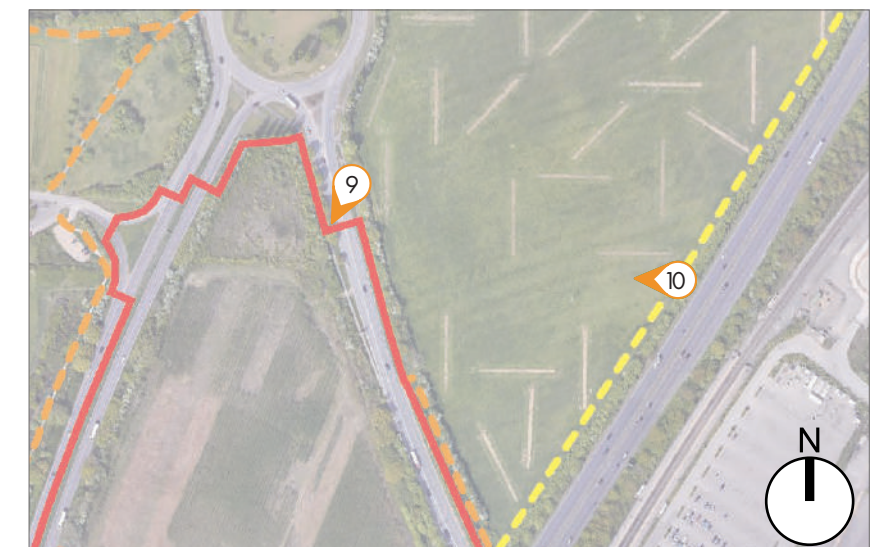
PHOTOGRAPH – VIEWPOINT 9 VALUE: LOW
 VIEW FROM OXFORD ROAD ADJACENT TO THE EASTERN BOUNDARY OF THE SITE, LOOKING SOUTH WEST TOWARDS THE SITE. THERE ARE OPEN VIEWS OF OXFORD ROAD WITHIN THE SITE AND THE EASTERN FIELD BOUNDARY VEGETATION WITH THE TOPS OF THE TREES WITHIN THE WOODLAND TO THE SOUTH OF THE SITE VISIBLE BEYOND. VIEWS OF THE INTERNAL ARRANGEMENTS OF THE FIELD ARE TRUNCATED BY THE BOUNDARY VEGETATION. THE CHARACTER OF THE VIEW IS OF A ROAD CORRIDOR WITH ASSOCIATED VEGETATION.



PHOTOGRAPH – VIEWPOINT 10 VALUE: HIGH
 VIEW FROM PROW 229/4/30 TO THE EAST OF THE SITE WITHIN THE PR7A RESIDENTIAL ALLOCATION SITE, LOOKING WEST TOWARDS THE SITE. THERE ARE OPEN VIEWS OF PARTS OF THE EASTERN SITE BOUNDARY VEGETATION, THE TOPS OF THE TREES ON THE NORTHERN AND SOUTHERN BOUNDARIES AND THE OVERHEAD TRANSMISSION LINES WITHIN THE SITE FROM THIS LOCATION. A GLIMPSED VIEW OF THE INTERNAL ARRANGEMENTS OF THE SITE IS POSSIBLE THROUGH AN EXISTING FIELD ENTRANCE IN THE CENTRE OF THE VIEW. THE CHARACTER OF THE VIEW IS OF OPEN PASTURE WITH MATURE FIELD BOUNDARY VEGETATION AND TREES.

LEGEND

- SITE BOUNDARY
- ① LOCATION OF PHOTOGRAPHIC VIEWPOINT – OPEN VIEW (AN OPEN VIEW OF THE WHOLE OF THE SITE OR OPEN VIEW OF PART OF THE SITE).
- ② LOCATION OF PHOTOGRAPHIC VIEWPOINT – PARTIAL VIEW (A VIEW OF THE SITE WHICH FORMS A SMALL PART OF THE WIDER PANORAMA, OR WHERE VIEWS ARE FILTERED BETWEEN INTERVENING BUILT FORM OR VEGETATION).
- ③ LOCATION OF PHOTOGRAPHIC VIEWPOINT – TRUNCATED VIEW (VIEWS OF THE SITE ARE OBSCURED BY THE INTERVENING BUILT FORM AND / OR VEGETATION, OR IS DIFFICULT TO PERCEIVE).

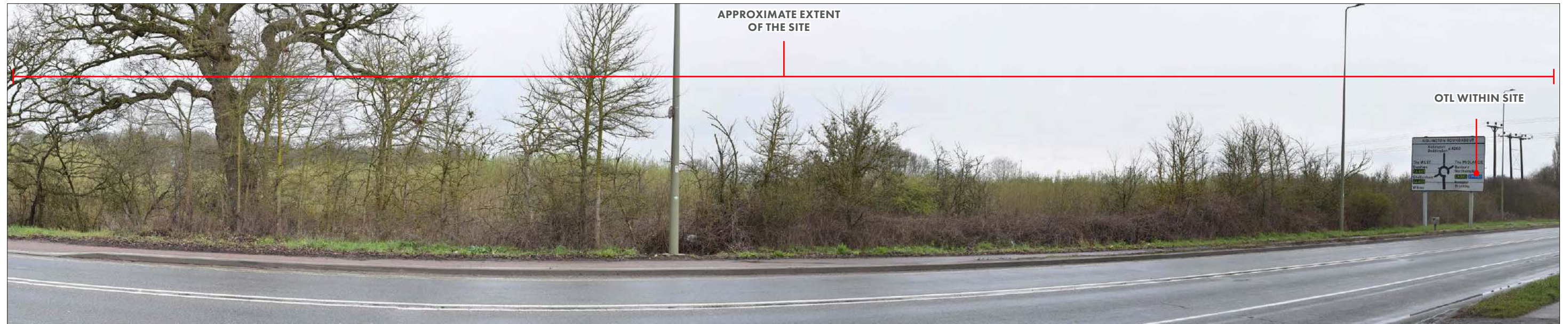


KEY PLAN

FIGURE 7.56 LOCAL VIEWPOINTS 9-10 WINTER (FABRIK, 2023)



PHOTOGRAPH – VIEWPOINT 11 VALUE: HIGH
 VIEW FROM PROW 229/4/30 TO THE EAST OF THE SITE WITHIN THE PR7A RESIDENTIAL ALLOCATION SITE, LOOKING WEST TOWARDS THE SITE. THERE ARE OPEN VIEWS OF PARTS OF THE EASTERN SITE BOUNDARY VEGETATION, THE TOPS OF THE TREES ON THE NORTHERN AND SOUTHERN BOUNDARIES AND THE OVERHEAD TRANSMISSION LINES WITHIN THE SITE FROM THIS LOCATION. THE CHARACTER OF THE VIEW IS OF OPEN PASTURE WITH MATURE FIELD BOUNDARY VEGETATION AND TREES. THE SAINSBURY'S SUPERSTORE ON THE SOUTHERN EDGE OF KIDLINGTON IS ALSO PARTIALLY VISIBLE.



PHOTOGRAPH – VIEWPOINT 12 VALUE: LOW FOR ROAD USERS, HIGH FOR FOOTPATH USERS
 VIEW FROM THE PERMISSIVE ROUTE THAT CONNECTS PROW 229/4/30 TO OXFORD ROAD, ADJACENT TO THE EASTERN SITE BOUNDARY, LOOKING WEST ACROSS THE SITE. THERE ARE OPEN VIEWS OF THE ROAD AND EASTERN FIELD BOUNDARY VEGETATION AND PARTS OF THE INTERNAL ARRANGEMENTS OF THE FIELD WHERE GAPS IN THE VEGETATION ALLOWS. THE CHARACTER OF THE VIEW IS OF A ROAD CORRIDOR WITH ASSOCIATE VEGETATION, SIGNAGE, LIGHTING AND OVERHEAD TRANSMISSION LINES.

LEGEND

- SITE BOUNDARY
- 📍 LOCATION OF PHOTOGRAPHIC VIEWPOINT – OPEN VIEW (AN OPEN VIEW OF THE WHOLE OF THE SITE OR OPEN VIEW OF PART OF THE SITE).
- 📍 LOCATION OF PHOTOGRAPHIC VIEWPOINT – PARTIAL VIEW (A VIEW OF THE SITE WHICH FORMS A SMALL PART OF THE WIDER PANORAMA, OR WHERE VIEWS ARE FILTERED BETWEEN INTERVENING BUILT FORM OR VEGETATION).
- 📍 LOCATION OF PHOTOGRAPHIC VIEWPOINT – TRUNCATED VIEW (VIEWS OF THE SITE ARE OBSCURED BY THE INTERVENING BUILT FORM AND / OR VEGETATION, OR IS DIFFICULT TO PERCEIVE).



KEY PLAN



KEY PLAN

FIGURE 7.57 LOCAL VIEWPOINTS 11-12 (FABRIK, 2023)



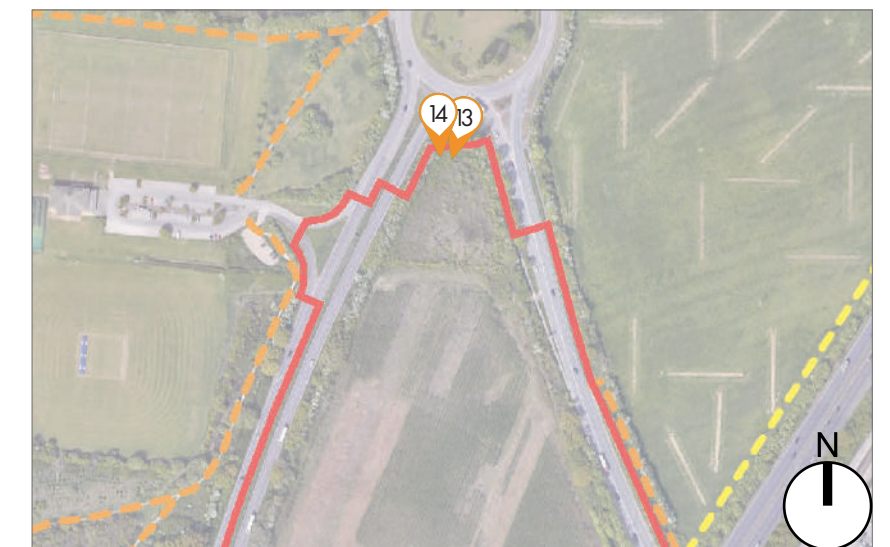
PHOTOGRAPH – VIEWPOINT 13 VALUE: LOW
 VIEW FROM KIDLINGTON ROUNDABOUT BETWEEN OXFORD ROAD AND FRIEZE WAY, ADJACENT TO THE NORTHERN BOUNDARY OF THE SITE, LOOKING SOUTH. THERE ARE OPEN VIEWS OF THE NORTHERN SITE BOUNDARY VEGETATION, WHICH TRUNCATE VIEWS OF THE INTERNAL ARRANGEMENTS OF THE SITE. THE CHARACTER OF THE VIEW IS OF A ROAD CORRIDOR WITH ASSOCIATED VEGETATION.



PHOTOGRAPH – VIEWPOINT 14 VALUE: LOW
 VIEW FROM THE CENTRAL RESERVATION OF FRIEZE WAY, LOOKING SOUTH TOWARDS THE SITE. THE POPLARS ON THE NORTHERN BOUNDARY ARE PROMINENT FEATURES. THERE ARE OPEN VIEWS OF THE NORTHERN AND WESTERN FIELD BOUNDARY VEGETATION, WHICH TRUNCATE VIEWS OF THE INTERNAL ARRANGEMENTS OF THE FIELD. THERE ARE OPEN VIEWS OF THE SECTION OF FRIEZE WAY WITHIN THE SITE. THE CHARACTER OF THE VIEW IS OF A ROAD CORRIDOR WITH ASSOCIATED VEGETATION.

LEGEND

- SITE BOUNDARY
- ① LOCATION OF PHOTOGRAPHIC VIEWPOINT – OPEN VIEW (AN OPEN VIEW OF THE WHOLE OF THE SITE OR OPEN VIEW OF PART OF THE SITE).
- ② LOCATION OF PHOTOGRAPHIC VIEWPOINT – PARTIAL VIEW (A VIEW OF THE SITE WHICH FORMS A SMALL PART OF THE WIDER PANORAMA, OR WHERE VIEWS ARE FILTERED BETWEEN INTERVENING BUILT FORM OR VEGETATION).
- ③ LOCATION OF PHOTOGRAPHIC VIEWPOINT – TRUNCATED VIEW (VIEWS OF THE SITE ARE OBSCURED BY THE INTERVENING BUILT FORM AND / OR VEGETATION, OR IS DIFFICULT TO PERCEIVE).



KEY PLAN

FIGURE 7.58 LOCAL VIEWPOINTS 13-14 WINTER (FABRIK, 2023)



PHOTOGRAPH – VIEWPOINT 15 VALUE: LOW
 VIEW FROM FRIEZE WAY, LOOKING SOUTH TOWARDS THE SITE. THE POPLARS ON THE NORTHERN BOUNDARY ARE PROMINENT FEATURES. THERE ARE OPEN VIEWS OF THE NORTHERN AND WESTERN SITE/FIELD BOUNDARY VEGETATION, WHICH TRUNCATE VIEWS OF THE INTERNAL ARRANGEMENTS OF THE FIELD. THE CHARACTER OF THE VIEW IS OF A ROAD CORRIDOR WITH ASSOCIATED VEGETATION.



PHOTOGRAPH – VIEWPOINT 16 VALUE: LOW
 VIEW FROM THE VEHICULAR ENTRANCE TO STRATFIELD BRAKE SPORTS GROUND TO THE WEST OF THE SITE, LOOKING EAST TOWARDS THE SITE. THERE ARE OPEN VIEWS OF THE SECTION OF FRIEZE WAY AND ENTRANCE TO THE SPORTS GROUND WITHIN THE SITE AS WELL AS THE WESTERN FIELD BOUNDARY VEGETATION, WHICH TRUNCATES VIEWS OF THE INTERNAL ARRANGEMENTS OF THE FIELD. THE OVERHEAD TRANSMISSION LINES IN THE NORTH OF THE SITE ARE VISIBLE FROM THIS LOCATION.

LEGEND

- SITE BOUNDARY
- 21 LOCATION OF PHOTOGRAPHIC VIEWPOINT – OPEN VIEW (AN OPEN VIEW OF THE WHOLE OF THE SITE OR OPEN VIEW OF PART OF THE SITE).
- 21 LOCATION OF PHOTOGRAPHIC VIEWPOINT – PARTIAL VIEW (A VIEW OF THE SITE WHICH FORMS A SMALL PART OF THE WIDER PANORAMA, OR WHERE VIEWS ARE FILTERED BETWEEN INTERVENING BUILT FORM OR VEGETATION).
- 21 LOCATION OF PHOTOGRAPHIC VIEWPOINT – TRUNCATED VIEW (VIEWS OF THE SITE ARE OBSCURED BY THE INTERVENING BUILT FORM AND / OR VEGETATION, OR IS DIFFICULT TO PERCEIVE).



KEY PLAN

FIGURE 7.59 LOCAL VIEWPOINTS 15-16 WINTER (FABRIK, 2023)



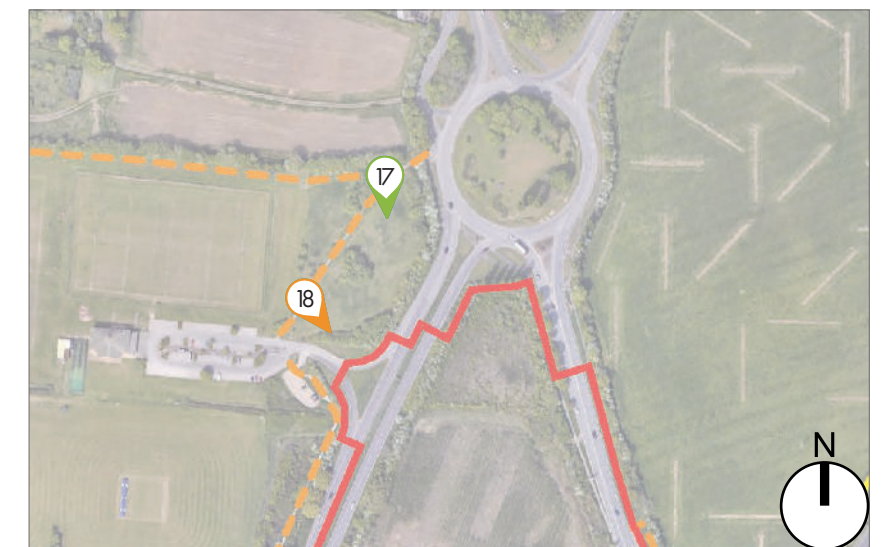
PHOTOGRAPH – VIEWPOINT 17 VALUE: HIGH
 VIEW FROM THE PERMISSIVE ROUTE CONNECTING OXFORD ROAD TO STRATFIELD BRAKE SPORTS GROUND TO THE NORTH WEST OF THE SITE, LOOKING SOUTH EAST TOWARDS THE SITE. THERE ARE PARTIAL VIEWS OF THE WESTERN SITE BOUNDARY VEGETATION FROM THIS LOCATION. THE CHARACTER OF THE VIEW IS OF AREAS OF GRASSLAND WITHIN A WELL VEGETATED SETTING.



PHOTOGRAPH – VIEWPOINT 18 VALUE: HIGH
 VIEW FROM THE PERMISSIVE ROUTE CONNECTING OXFORD ROAD TO STRATFIELD BRAKE SPORTS GROUND TO THE WEST OF THE SITE, LOOKING EAST TOWARDS THE SITE. THERE ARE OPEN VIEWS OF THE WESTERN SITE BOUNDARY VEGETATION FROM THIS LOCATION. THE CHARACTER OF THE VIEW IS OF AREAS OF GRASSLAND AND CAR PARKING WITHIN A WELL VEGETATED SETTING.

LEGEND

- SITE BOUNDARY
- ① LOCATION OF PHOTOGRAPHIC VIEWPOINT – OPEN VIEW (AN OPEN VIEW OF THE WHOLE OF THE SITE OR OPEN VIEW OF PART OF THE SITE).
- ② LOCATION OF PHOTOGRAPHIC VIEWPOINT – PARTIAL VIEW (A VIEW OF THE SITE WHICH FORMS A SMALL PART OF THE WIDER PANORAMA, OR WHERE VIEWS ARE FILTERED BETWEEN INTERVENING BUILT FORM OR VEGETATION).
- ③ LOCATION OF PHOTOGRAPHIC VIEWPOINT – TRUNCATED VIEW (VIEWS OF THE SITE ARE OBSCURED BY THE INTERVENING BUILT FORM AND / OR VEGETATION, OR IS DIFFICULT TO PERCEIVE).



KEY PLAN

FIGURE 7.60 LOCAL VIEWPOINTS 17-18 WINTER (FABRIK, 2023)



PHOTOGRAPH – VIEWPOINT 19 VALUE: HIGH
 VIEW FROM THE PERMISSIVE ROUTE WITHIN STRATFIELD BRAKE TO THE WEST OF THE SITE. THERE ARE PARTIAL VIEWS OF THE WESTERN SITE BOUNDARY VEGETATION WHERE GAPS IN THE INTERVENING VEGETATION ALLOW. THE CHARACTER OF THE VIEW IS OF AREAS OF GRASSLAND AND FOOTPATHS WITHIN A WELL VEGETATED SETTING.



PHOTOGRAPH – VIEWPOINT 20 VALUE: HIGH
 VIEW FROM THE PERMISSIVE ROUTE WITHIN STRATFIELD BRAKE TO THE WEST OF THE SITE. THERE ARE PARTIAL VIEWS OF THE WESTERN SITE BOUNDARY VEGETATION WHERE GAPS IN THE INTERVENING VEGETATION ALLOW. THE CHARACTER OF THE VIEW IS OF AREAS OF WOODLAND AND SCRUB WITH FOOTPATHS WITHIN A WELL VEGETATED SETTING.

LEGEND

- SITE BOUNDARY
- 21 LOCATION OF PHOTOGRAPHIC VIEWPOINT – OPEN VIEW (AN OPEN VIEW OF THE WHOLE OF THE SITE OR OPEN VIEW OF PART OF THE SITE).
- 21 LOCATION OF PHOTOGRAPHIC VIEWPOINT – PARTIAL VIEW (A VIEW OF THE SITE WHICH FORMS A SMALL PART OF THE WIDER PANORAMA, OR WHERE VIEWS ARE FILTERED BETWEEN INTERVENING BUILT FORM OR VEGETATION).
- 21 LOCATION OF PHOTOGRAPHIC VIEWPOINT – TRUNCATED VIEW (VIEWS OF THE SITE ARE OBSCURED BY THE INTERVENING BUILT FORM AND / OR VEGETATION, OR IS DIFFICULT TO PERCEIVE).



KEY PLAN

FIGURE 7.61 LOCAL VIEWPOINTS 19-20 WINTER (FABRIK, 2023)



PHOTOGRAPH – VIEWPOINT 21 VALUE: HIGH
 VIEW FROM THE PERMISSIVE ROUTE WITHIN STRATFIELD BRAKE TO THE WEST OF THE SITE. THERE ARE PARTIAL VIEWS OF THE WESTERN SITE BOUNDARY VEGETATION WHERE GAPS IN THE INTERVENING VEGETATION ALLOW. THE CHARACTER OF THE VIEW IS OF AREAS OF WOODLAND AND SCRUB WITH FOOTPATHS WITHIN A WELL VEGETATED SETTING.



PHOTOGRAPH – VIEWPOINT 22 VALUE: HIGH
 VIEW FROM THE PERMISSIVE ROUTE WITHIN STRATFIELD BRAKE TO THE WEST OF THE SITE. VIEWS OF THE SITE ARE TRUNCATED BY THE INTERVENING VEGETATION. THE CHARACTER OF THE VIEW IS OF AREAS OF WOODLAND, GRASSLAND AND SCRUB WITH FOOTPATHS WITHIN A WELL VEGETATED SETTING.

LEGEND

- **SITE BOUNDARY**
- ① **LOCATION OF PHOTOGRAPHIC VIEWPOINT – OPEN VIEW (AN OPEN VIEW OF THE WHOLE OF THE SITE OR OPEN VIEW OF PART OF THE SITE).**
- ② **LOCATION OF PHOTOGRAPHIC VIEWPOINT – PARTIAL VIEW (A VIEW OF THE SITE WHICH FORMS A SMALL PART OF THE WIDER PANORAMA, OR WHERE VIEWS ARE FILTERED BETWEEN INTERVENING BUILT FORM OR VEGETATION).**
- ③ **LOCATION OF PHOTOGRAPHIC VIEWPOINT – TRUNCATED VIEW (VIEWS OF THE SITE ARE OBSCURED BY THE INTERVENING BUILT FORM AND / OR VEGETATION, OR IS DIFFICULT TO PERCEIVE).**



KEY PLAN

FIGURE 7.62 LOCAL VIEWPOINTS 21-22 WINTER (FABRIK, 2023)



APPROXIMATE EXTENT OF THE SITE





PHOTOGRAPH – VIEWPOINT 23 VALUE: HIGH
 VIEW FROM THE PERMISSIVE ROUTE WITHIN STRATFIELD BRAKE TO THE WEST OF THE SITE. VIEWS OF THE SITE ARE TRUNCATED BY THE INTERVENING VEGETATION. THE CHARACTER OF THE VIEW IS OF AREAS OF WOODLAND, GRASSLAND AND SCRUB WITH FOOTPATHS WITHIN A WELL VEGETATED SETTING.



APPROXIMATE EXTENT OF THE SITE

PHOTOGRAPH – VIEWPOINT 24 VALUE: HIGH
 VIEW FROM PROW 265/33/60/OXFORD GREEN BELT WAY/ OXFORD CANAL WALK LONG DISTANCE WALKING ROUTES TO THE SOUTH WEST OF THE SITE, LOOKING NORTH EAST TOWARDS THE SITE. VIEWS OF THE SITE ARE TRUNCATED BY THE INTERVENING VEGETATION AND TOPOGRAPHY. STRATFIELD BRAKE WOODLAND AND THE PYLONS TO THE SOUTH OF THE SITE ARE PROMINENT ON THE HORIZON AND TRUNCATE VIEWS OF THE SITE. THE VIEW HAS A RURAL AND OPEN CHARACTER.

LEGEND

-  **SITE BOUNDARY**
-  **LOCATION OF PHOTOGRAPHIC VIEWPOINT – OPEN VIEW (AN OPEN VIEW OF THE WHOLE OF THE SITE OR OPEN VIEW OF PART OF THE SITE).**
-  **LOCATION OF PHOTOGRAPHIC VIEWPOINT – PARTIAL VIEW (A VIEW OF THE SITE WHICH FORMS A SMALL PART OF THE WIDER PANORAMA, OR WHERE VIEWS ARE FILTERED BETWEEN INTERVENING BUILT FORM OR VEGETATION).**
-  **LOCATION OF PHOTOGRAPHIC VIEWPOINT – TRUNCATED VIEW (VIEWS OF THE SITE ARE OBTAINED BY THE INTERVENING BUILT FORM AND / OR VEGETATION, OR IS DIFFICULT TO PERCEIVE).**



KEY PLAN



KEY PLAN

FIGURE 7.63 LOCAL VIEWPOINTS 23-24 WINTER (FABRIK, 2023)



PHOTOGRAPH – VIEWPOINT 25 VALUE: LOW
 VIEW FROM THE A44 WOODSTOCK ROAD TO THE SOUTH WEST OF THE SITE, LOOKING NORTH EAST TOWARDS THE SITE. VIEWS OF THE SITE ARE TRUNCATED BY THE INTERVENING VEGETATION AND TOPOGRAPHY. STRATFIELD BRAKE WOODLAND AND THE PYLONS TO THE SOUTH OF THE SITE ARE PROMINENT ON THE HORIZON AND TRUNCATE VIEWS OF THE SITE. THE VIEW HAS A RURAL AND OPEN CHARACTER.

LEGEND

- SITE BOUNDARY
- ① LOCATION OF PHOTOGRAPHIC VIEWPOINT – OPEN VIEW (AN OPEN VIEW OF THE WHOLE OF THE SITE OR OPEN VIEW OF PART OF THE SITE).
- ② LOCATION OF PHOTOGRAPHIC VIEWPOINT – PARTIAL VIEW (A VIEW OF THE SITE WHICH FORMS A SMALL PART OF THE WIDER PANORAMA, OR WHERE VIEWS ARE FILTERED BETWEEN INTERVENING BUILT FORM OR VEGETATION).
- ③ LOCATION OF PHOTOGRAPHIC VIEWPOINT – TRUNCATED VIEW (VIEWS OF THE SITE ARE OBSCURED BY THE INTERVENING BUILT FORM AND / OR VEGETATION, OR IS DIFFICULT TO PERCEIVE).



KEY PLAN

FIGURE 7.64 LOCAL VIEWPOINT 25 WINTER (FABRIK, 2023)

LENTEN HOUSE
16 LENTEN STREET
ALTON
HAMPSHIRE
GU34 1HG

FIRST FLOOR STUDIO,
THE OLD SCHOOL
4 EXTON STREET
LONDON
SE1 8UE

FABRIKUK.COM

fabrik